

N. MEXICO OIL CONSERVATION COMMISS.
WELL LOCATION AND ACREAGE DEDICATION PLAT

Form C-102
Supersedes C-128
Effective 1-1-65

All distances must be from the outer boundaries of the Section

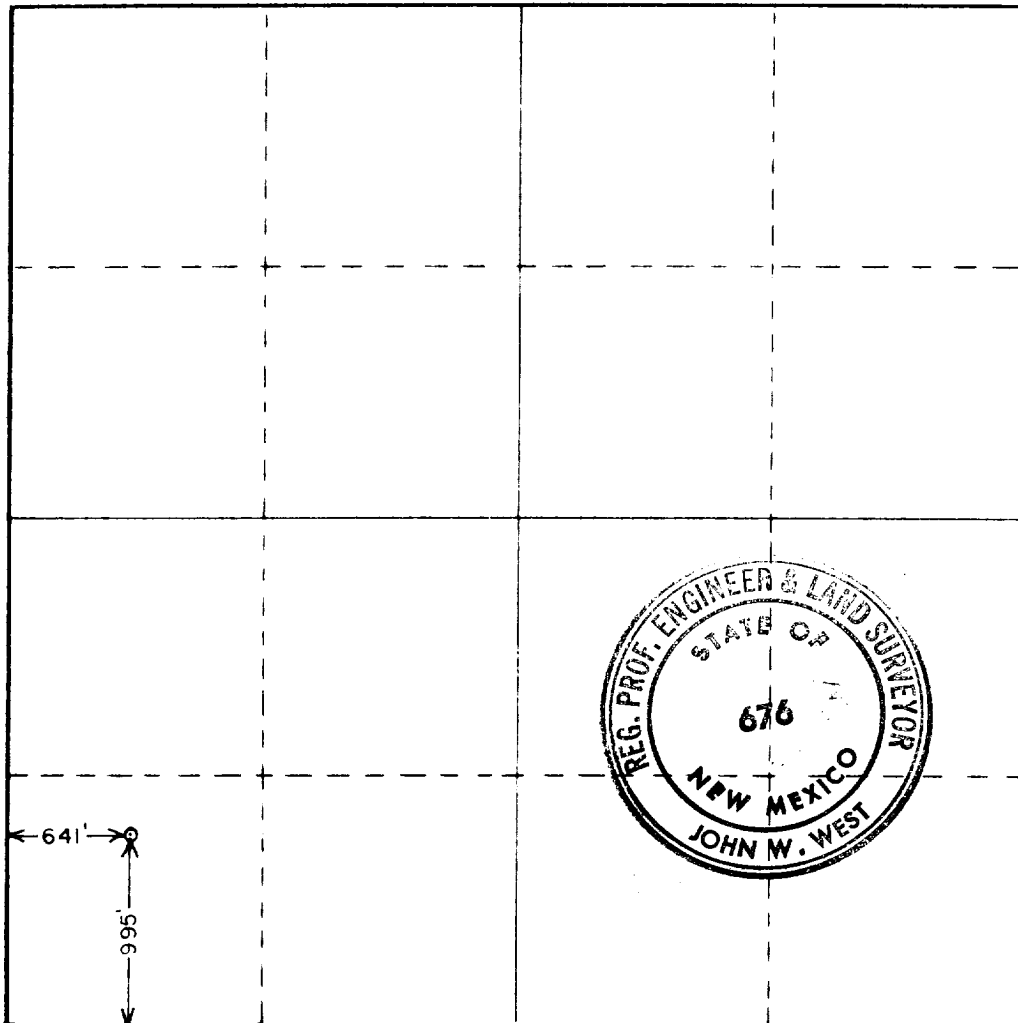
Operator Permian Brine Sales & Service, Inc.		Lease Salt Water Eugene		Well No. 1
Section M	Section 17	Township 22South	Range 27East	County Eddy
Actual Footage Location of Well: 995 feet from the South line and 641 feet from the West line.				
Ground Level Elev 3126.4	Producing Formation	Pool	Dedicated Acreage	

1. Outline the acreage dedicated to the subject well by colored pencil or hachure marks on the plat below.
2. If more than one lease is dedicated to the well, outline each and identify the ownership thereof (both as to working interest and royalty).
3. If more than one lease of different ownership is dedicated to the well, have the interests of all owners been consolidated by communitization, unitization, force-pooling, etc?

☐ Yes ☐ No If answer is "yes," type of consolidation _____

If answer is "no," list the owners and tract descriptions which have actually been consolidated. (Use reverse side of this form if necessary.) _____

No allowable will be assigned to the well until all interests have been consolidated (by communitization, unitization, forced-pooling, or otherwise) or until a non-standard unit, eliminating such interests, has been approved by the Commission.



CERTIFICATION

I hereby certify that the information contained herein is true and complete to the best of my knowledge and belief.

Name *W. Dickerson*
Position *President*
Company *Permian Brine Sales & Service, Inc.*

Date *5/26/78*

Date *5/26/78*

I hereby certify that the well location shown on this plat was plotted from field notes of actual surveys made by me or under my supervision, and that the same is true and correct to the best of my knowledge and belief.

May 15, 1978

Date Surveyed

Registered Professional Engineer and/or Land Surveyor

John W. West
Certificate No. *John W. West* 676

Ronald J. Eidson 3239

