

**LANEXCO, INC.**  
P. O. BOX 1206  
JAL, NEW MEXICO 88252

505/395-3056

RECEIVED

August 1, 1988

AUG 08 '88

O. C. D.  
ARTESIA OFFICE

Oil Conservation Division  
P.O. Drawer DD  
Artesia, NM 88210

RE: CERRO COM NO. 1 Dual  
Section 11, T-23-S, R-27-E  
Eddy County, NM

ATTN: Mr Mike Williams

Mr. Williams,

LANEXC, INC. respectfully requests approval to surface commingle the oil on the above referenced lease. As you are aware it was a recently recompleted as a dual well.

Currently we have two oil storage tanks on location, but feel it will not be large enough storage unless we can tie the tanks together. The Interest Owners are the same for both zones.

Following is a breakdown on gravity and prices received in July.

BONESPRINGS	42.4 gravity	\$16.75/bbl.
WOLFCAMP	57.6 gravity	\$15.75/bbl.
COMBINED	45.7 gravity	\$16.27/bbl.

Enclosed you will also find a sketch of the storage facilities.

If I can be of further assistance in this matter, please contact me.

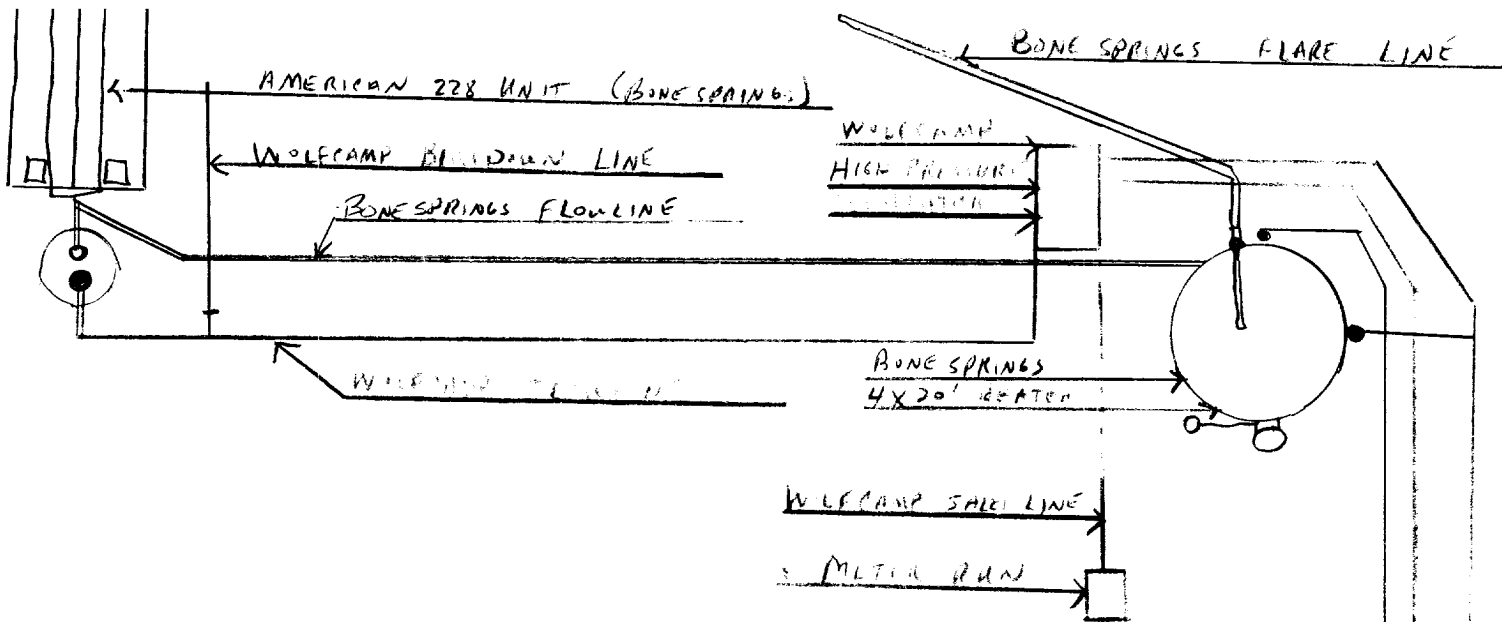
SINCERLY,

*Mike Copeland by AD*

Mike Copeland  
Production Supertendent

cc: LANEXCO, INC.  
P.O. Box 2730  
Midland, Texas 79702  
ATTN: Mr Tom Phipps

*Copeland*  
*will re submit*  
*to WLM*  
*8-8-88*



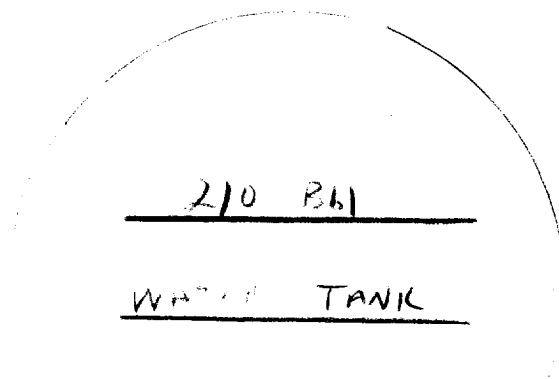
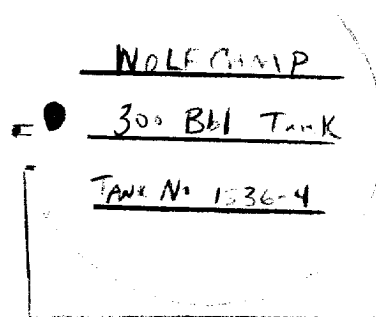
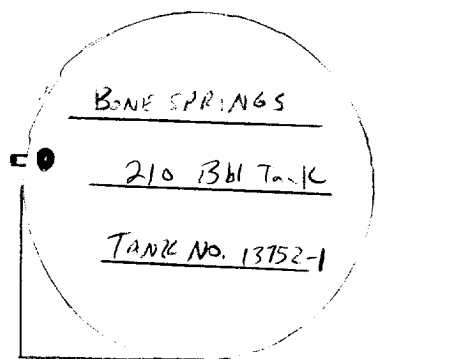
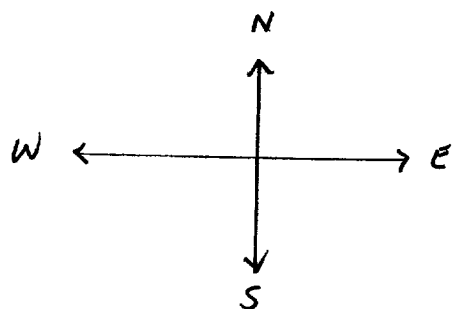
R-1 - WOLF CAMP

Block - Bone Springs

WOLF CAMP OIL STORAGE LINE

WATER DIS. LINE BOTH LINES

BONE SPRINGS OIL STORAGE LINE



LANEXCO, INC.

CERRO COM #1

S-11, T-23-S, R-27-E

Eddy County NM