

N MEXICO OIL CONSERVATION COMMISS
WELL LOCATION AND ACREAGE DEDICATION PLAT

Form C-102
 Supersedes C-128
 Effective 1-1-65

All distances must be from the outer boundaries of the Section

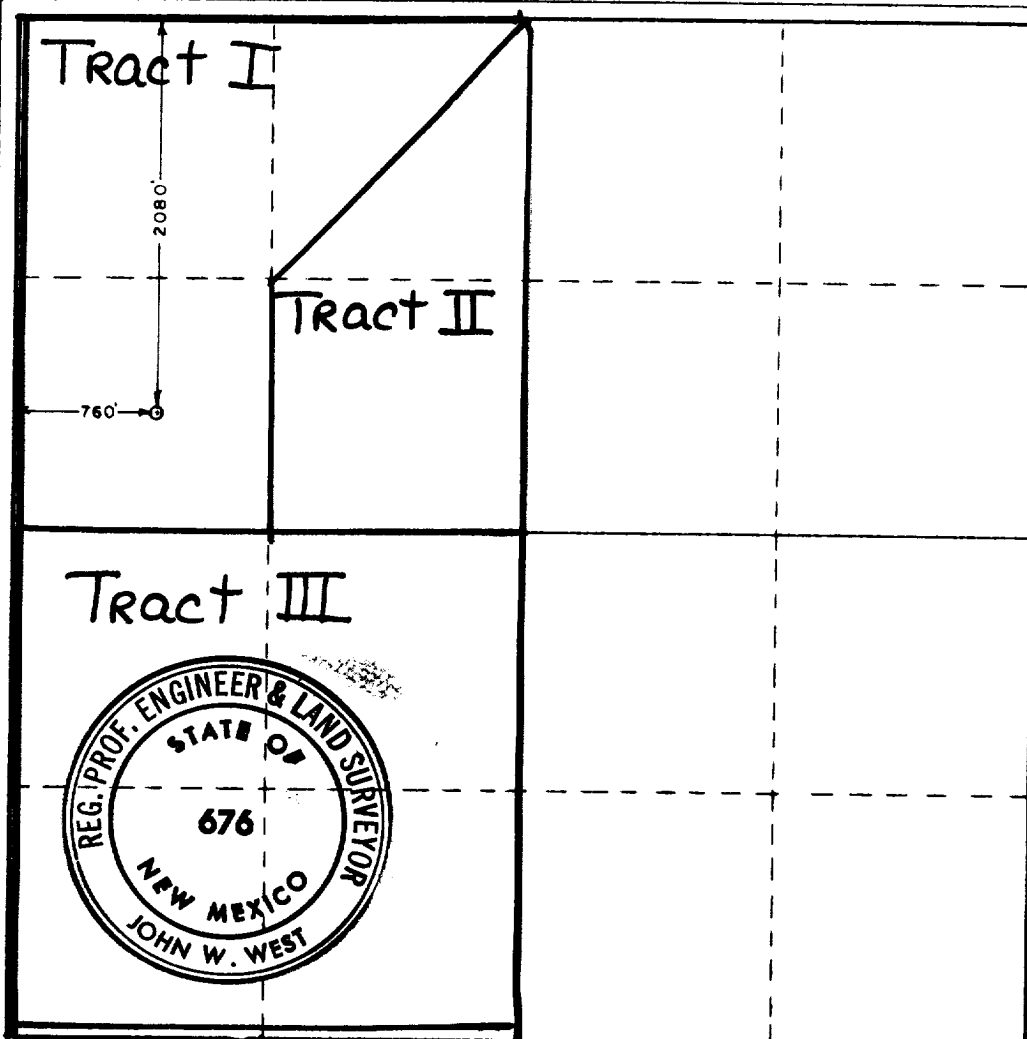
Operator Black River Corp.			Lease 5000. Cerro Com.		Well No. 1
Unit Letter E	Section 11	Township 23 South	Range 27 East	County Eddy	
Actual Footage Location of Well: 2080 feet from the North line and 760 feet from the West line					
Ground Level Elev. 3092.4	Producing Formation Morrow		Pool Und. South Carlsbad Morrow		Dedicated Acreage: 320 Acres

1. Outline the acreage dedicated to the subject well by colored pencil or hatchure marks on the plat below.
2. If more than one lease is dedicated to the well, outline each and identify the ownership thereof (both as to working interest and royalty).
3. If more than one lease of different ownership is dedicated to the well, have the interests of all owners been consolidated by communitization, unitization, force-pooling, etc?

☒ Yes ☐ No If answer is "yes," type of consolidation Communitization

If answer is "no," list the owners and tract descriptions which have actually been consolidated. (Use reverse side of this form if necessary.) _____

No allowable will be assigned to the well until all interests have been consolidated (by communitization, unitization, forced-pooling, or otherwise) or until a non-standard unit, eliminating such interests, has been approved by the Commission.



CERTIFICATION

I hereby certify that the information contained herein is true and complete to the best of my knowledge and belief.

Name Ronnie Bowden
 Position **Vice President**
 Company **Black River Corporation**
 Date **July 7, 1978**

I hereby certify that the well location shown on this plat was plotted from field notes of actual surveys made by me or under my supervision, and that the same is true and correct to the best of my knowledge and belief.

Date Surveyed **June 30, 1978**

Registered Professional Engineer and/or Land Surveyor

John W. West
 Certificate No. **John W. West 676**
Ronald J. Eidson 3239