

NEW MEXICO OIL CONSERVATION COMMISSION WELL LOCATION AND ACREAGE DEDICATION PLAT

RECEIVED

Form C-112
Superseded C-1
Effective 1-1-84

All distances must be from the outer boundaries of the Section

JUL 15 '88

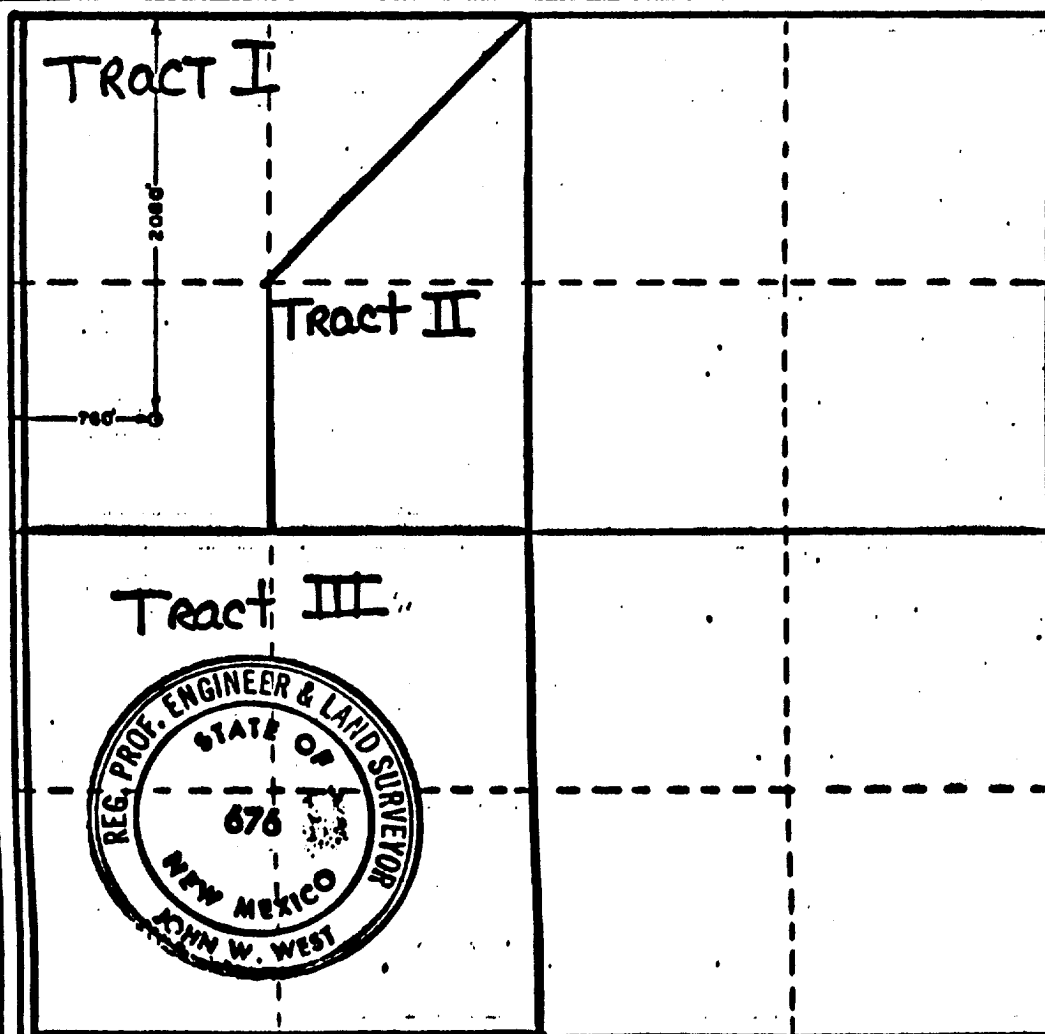
Operator Lanexco, Inc.			Lease Cerro Com			Well No. 1		
Unit Letter E	Section 11	Township 23 South	Range 27 East	County ARTESIA, OFFICE Eddy				
Actual Footage Location of Well: <div style="display: flex; justify-content: space-between;"> 2080 feet from the North line and 760 feet from the West line </div>								
Ground Level Elev. 3092.4		Producing Formation Bone Springs		Pool Wildcat Bone Springs			Dedicated Acreage 40	

1. Outline the acreage dedicated to the subject well by colored pencil or hatchure marks on the plat below.
2. If more than one lease is dedicated to the well, outline each and identify the ownership thereof (both as to working interest and royalty).
3. If more than one lease of different ownership is dedicated to the well, have the interests of all owners been consolidated by communitization; unitization, force-pooling, etc?

☒ Yes ☐ No If answer is "yes," type of consolidation Communitization

If answer is "no," list the owners and tract descriptions which have actually been consolidated. (Use reverse side of this form if necessary.) _____

No allowable will be assigned to the well until all interests have been consolidated (by communitization, unitization, forced-pooling, or otherwise) or until a non-standard unit, eliminating such interests, has been approved by the Commission.



CERTIFICATION

I hereby certify that the information contained herein is true and complete to the best of my knowledge and belief.

Name Mike C. [Signature]
 Position Production Supt.
 Company Lanexco, Inc.
 Date July 12, 1988

I hereby certify that the well location shown on this plat was plotted from field notes of actual surveys made by me or under my supervision, and that the same is true and correct to the best of my knowledge and belief.

Date Surveyed June 30, 1978
 Registered Professional Engineer and/or Land Surveyor
[Signature]
 Certificate No. John W. West 67
Ronald J. Eldon 323