

NO. OF COPIES RECEIVED	5
DISTRIBUTION	
SANTA FE	1
FILE	1 ✓
U.S.G.S.	2
LAND OFFICE	
OPERATOR	1

**RECEIVED**  
 NEW MEXICO OIL CONSERVATION COMMISSION  
**JUL 10 1979**  
**O. C. C.**  
**ARTESIA, OFFICE**

Form C-101  
 Revised 1-1-65

5A. Indicate Type of Lease  
 STATE ☐ FEE ☒  
 5. State Oil & Gas Lease No.

**APPLICATION FOR PERMIT TO DRILL, DEEPEN, OR PLUG BACK**

1a. Type of Work  
 b. Type of Well DRILL ☐ DEEPEN ☐ PLUG BACK ☒  
 OIL WELL ☐ GAS WELL ☒ OTHER ☐ SINGLE ZONE ☐ MULTIPLE ZONE ☐  
 2. Name of Operator **MADDOX ENERGY CORPORATION** ✓  
 3. Address of Operator **Permian Bldg., Suite 511, Midland, Texas 79701**  
 4. Location of Well UNIT LETTER **H** LOCATED **1980** FEET FROM THE **North** LINE  
 AND **990** FEET FROM THE **East** LINE OF SEC. **27** TWP. **23-S** RGE. **28-E** NMPM  
 10. Field and Pool, or Wildcat **Wildcat**  
 12. County **Eddy**  
 19. Proposed Depth **11,442'KB** 19A. Formation **Atoka** 20. Rotary or C.T. **Rotary**  
 21. Elevation (Show whether DT, RT, etc.) **3035.5' GL** 21A. Kind & Status Plug. Bond **Active** 21B. Drilling Contractor **Mack Chase, Inc.** 22. Approx. Date Work will start **July 9, 1979**

23. PROPOSED CASING AND CEMENT PROGRAM

SIZE OF HOLE	SIZE OF CASING	WEIGHT PER FOOT	SETTING DEPTH	SACKS OF CEMENT	EST. TOP
NO CHANGE IN THE EXISTING PROGRAM					

BLOWOUT PREVENTER PROGRAM

'6", 5000# Double Hydraulic BOP.  
 Nearest dwelling to location is approximately 1500 feet.

IN ABOVE SPACE DESCRIBE PROPOSED PROGRAM IF PROPOSAL IS TO DEEPEN OR PLUG BACK, GIVE DATA ON PRESENT PRODUCTIVE ZONE AND PROPOSED NEW PRODUCTIVE ZONE. GIVE BLOWOUT PREVENTER PROGRAM, IF ANY.

I hereby certify that the information above is true and complete to the best of my knowledge and belief.

Signed [Signature] Title Operations Manager Date June 25, 1979  
 (This space for State Use)

APPROVED BY [Signature] TITLE OIL AND GAS INSPECTOR DATE JUL 11 1979  
 CONDITIONS OF APPROVAL, IF ANY:

**MEXICO OIL CONSERVATION COMMISSION  
WELL LOCATION AND ACREAGE DEDICATION PLAT**

Form C-102  
Supersedes C-128  
Effective 1-1-65

All distances must be from the outer boundaries of the Section.

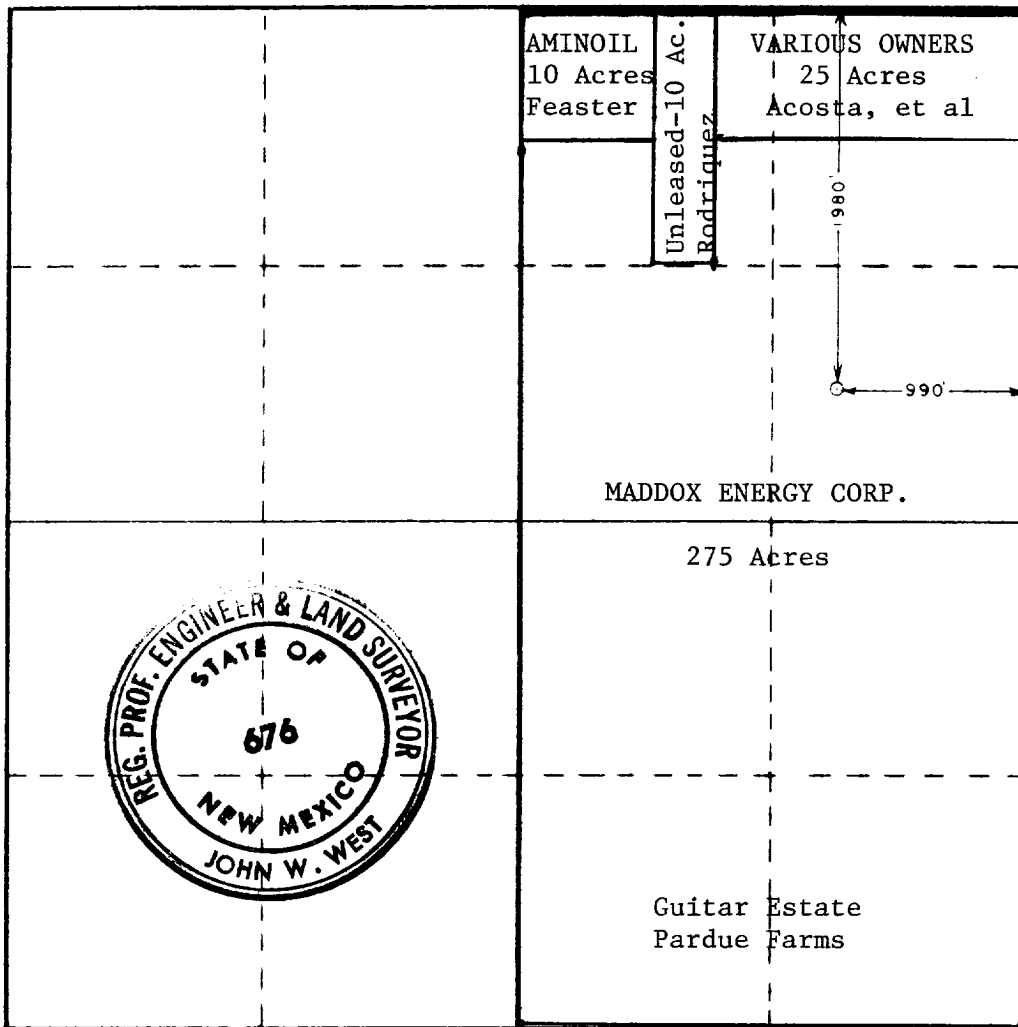
Operator <b>MADDOX ENERGY CORP.</b>			Lease <b>PARDUE FARMS 27</b>		Well No. <b>1</b>
Unit Letter <b>H</b>	Section <b>27</b>	Township <b>23 SOUTH</b>	Range <b>28 EAST</b>	County <b>EDDY</b>	
Actual Footage Location of Well: <b>1980</b> feet from the <b>NORTH</b> line and <b>990</b> feet from the <b>EAST</b> line					
Ground Level Elev. <b>3035.5</b>	Producing Formation <b>Atoka</b>		Pool <b>Wildcat</b>		Dedicated Acreage: <b>320</b> Acres

1. Outline the acreage dedicated to the subject well by colored pencil or hatchure marks on the plat below.
2. If more than one lease is dedicated to the well, outline each and identify the ownership thereof (both as to working interest and royalty).
3. If more than one lease of different ownership is dedicated to the well, have the interests of all owners been consolidated by communitization, unitization, force-pooling, etc?

☒ Yes    ☐ No    If answer is "yes," type of consolidation Designation of Pooled Area, Dec. 1, 1978

If answer is "no," list the owners and tract descriptions which have actually been consolidated. (Use reverse side of this form if necessary.) \_\_\_\_\_

No allowable will be assigned to the well until all interests have been consolidated (by communitization, unitization, forced-pooling, or otherwise) or until a non-standard unit, eliminating such interests, has been approved by the Commission.



**CERTIFICATION**

I hereby certify that the information contained herein is true and complete to the best of my knowledge and belief.

Name  
**Bill D. Baker**  
Position  
**Operations Manager**  
Company  
**MADDOX ENERGY CORPORATION**

Date  
**June 25, 1979**

I hereby certify that the well location shown on this plat was plotted from field notes of actual surveys made by me or under my supervision, and that the same is true and correct to the best of my knowledge and belief.

Date Surveyed  
**JULY 20, 1978**

Registered Professional Engineer and/or Land Surveyor

Certificate No. **John W. West 676**  
**Ronald J. Eidson 3239**