

**MEXICO OIL CONSERVATION COMMISSION
WELL LOCATION AND ACREAGE DEDICATION PLAT**

*File 44-111(2)
Land Office
Form C-10,
Supersedes C-12H
Effective 1-1-65*

All distances must be from the outer boundaries of the Section

Owner Delta Drilling Co.		Lease South Culebra Bluff Unit		Well No. 3
Section G	Section 23	Township 23 South	Range 28 East	County Eddy

Actual Footage Location of Well:				
2050	feet from the	North	line and	1950
		feet from the	East	line
Ground Level Elev. 3000.6	Producing Formation Bone Springs	Pool South Culebra Bluff Bone Springs	Dedicated Acreage: 80	

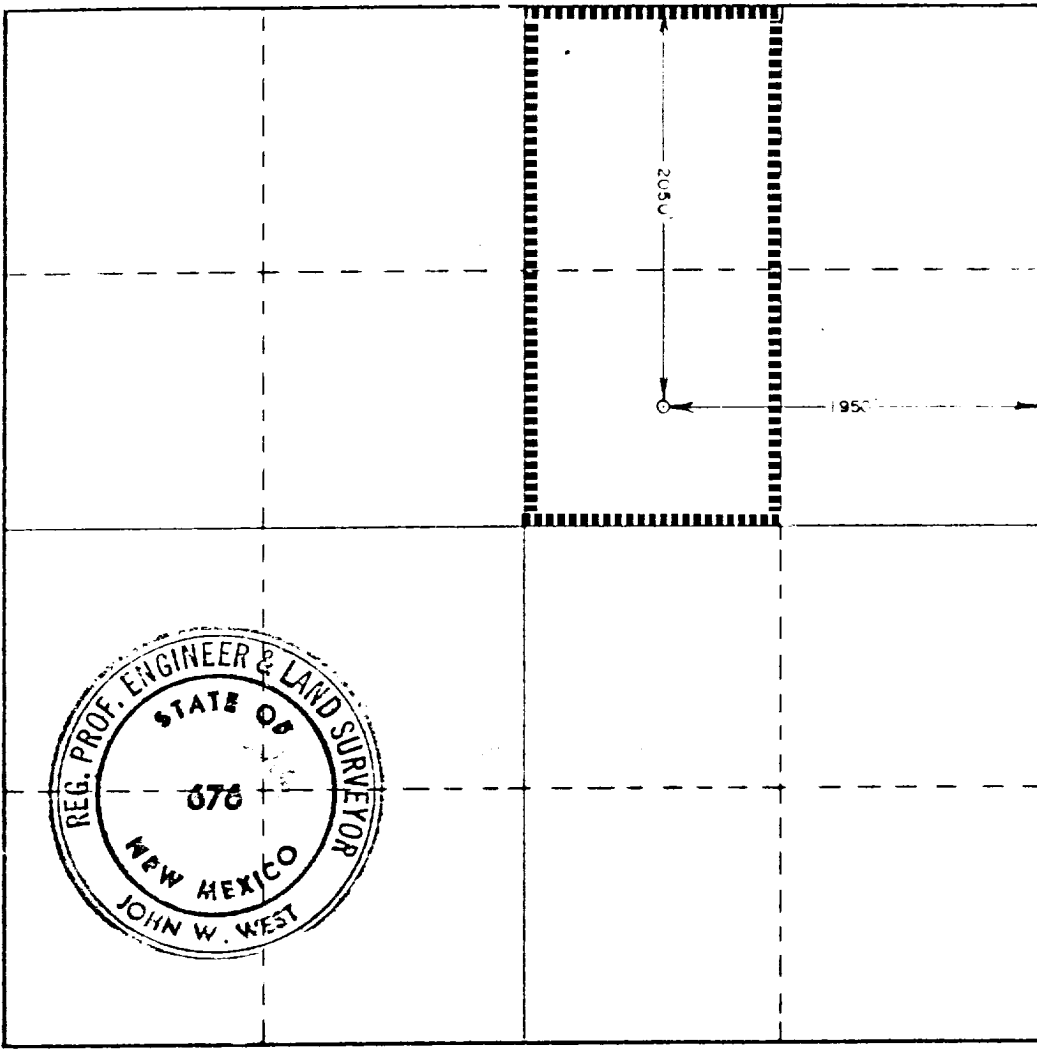
1. Outline the acreage dedicated to the subject well by colored pencil or hachure marks on the plat below.
2. If more than one lease is dedicated to the well, outline each and identify the ownership thereof (both as to working interest and royalty).
3. If more than one lease of different ownership is dedicated to the well, have the interests of all owners been consolidated by communitization, unitization, force-pooling, etc?

RECEIVED
OCT 26 1979
ARTESIA OFFICE

☒ Yes ☐ No If answer is "yes," type of consolidation Unitization

If answer is "no," list the owners and tract descriptions which have actually been consolidated. (Use reverse side of this form if necessary.) _____

No allowable will be assigned to the well until all interests have been consolidated (by communitization, unitization, forced-pooling, or otherwise) or until a non-standard unit, eliminating such interests, has been approved by the Commission.



CERTIFICATION

I hereby certify that the information contained herein is true and complete to the best of my knowledge and belief.

Ron Brown

Name **Ron Brown**

Position **Field Project Manager**

Company **Delta Drilling Company**

Date **10/24/79**

I hereby certify that the well location shown on this plat was plotted from field notes of actual surveys made by me or under my supervision, and that the same is true and correct to the best of my knowledge and belief.

Date Surveyed **September 12, 1978**

Registered Professional Engineer and/or Land Surveyor

John W. West

Certificate No. **John W. West 676**
Ronald J. Eidson 3239

