

OIL CONSERVATION DIVISION

STATE OF NEW MEXICO
ENERGY AND MINERALS DEPARTMENTP. O. BOX 2088
SANTA FE, NEW MEXICO 87501

All distances must be from the outer boundaries of the Section.

RECEIVED BY
SEP 3 1985
O.C.D.
ARTESIA, OFFICE

Operator Maddox Energy Corporation			Lease Malaga		
Unit Letter G	Section 3	Township 24S	Range 28E	County Eddy	

Actual Postage Location of Well:

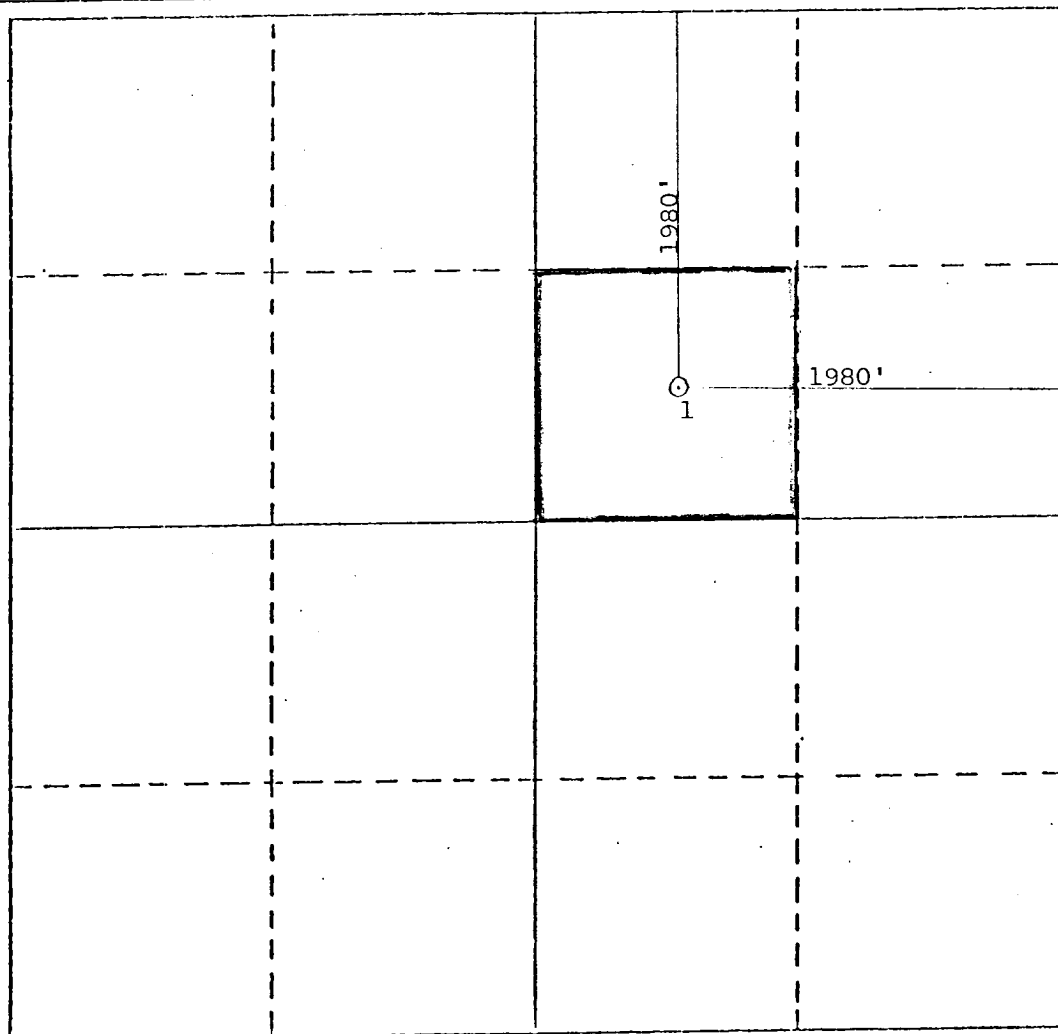
1980 feet from the North line and	1980 feet from the East line
Ground Level Elev. 3015.7	Producing Formation Bone Spring
Pool Undesignated	
Dedicated Acreage: 40 Acres	

1. Outline the acreage dedicated to the subject well by colored pencil or hachure marks on the plat below.
2. If more than one lease is dedicated to the well, outline each and identify the ownership thereof (both as to working interest and royalty).
3. If more than one lease of different ownership is dedicated to the well, have the interests of all owners been consolidated by communitization, unitization, force-pooling, etc?

☐ Yes ☐ No If answer is "yes," type of consolidation _____

If answer is "no," list the owners and tract descriptions which have actually been consolidated. (Use reverse side of this form if necessary.) _____

No allowable will be assigned to the well until all interests have been consolidated (by communitization, unitization, forced-pooling, or otherwise) or until a non-standard unit, eliminating such interests, has been approved by the Division.



CERTIFICATION

I hereby certify that the information contained herein is true and complete to the best of my knowledge and belief.

Rebecca A. Hughes

Name

Rebecca A. Hughes

Position

Agent

Company

MADDOX ENERGY CORPORATION

Date

8/30/85

I hereby certify that the well location shown on this plat was plotted from field notes of actual surveys made by me or under my supervision, and that the same is true and correct to the best of my knowledge and belief.

Date Surveyed

2/6/79

Registered Professional Engineer
and/or Land Surveyor

original signed by:

John W. West

Certificate No.

0 330 660 990 1320 1650 1980 2310 2640 2970 3300 3630 3960 4290 4620 4950 5280 5610 5940 6270 6600