

NEW MEXICO OIL CONSERVATION COMMISSION
WELL LOCATION AND ACREAGE DEDICATION PLAT

RECEIVED

Form C-102
Supersedes C-128
Effective 1-1-65

All distances must be from the outer boundaries of the Section.

APR 26 '90

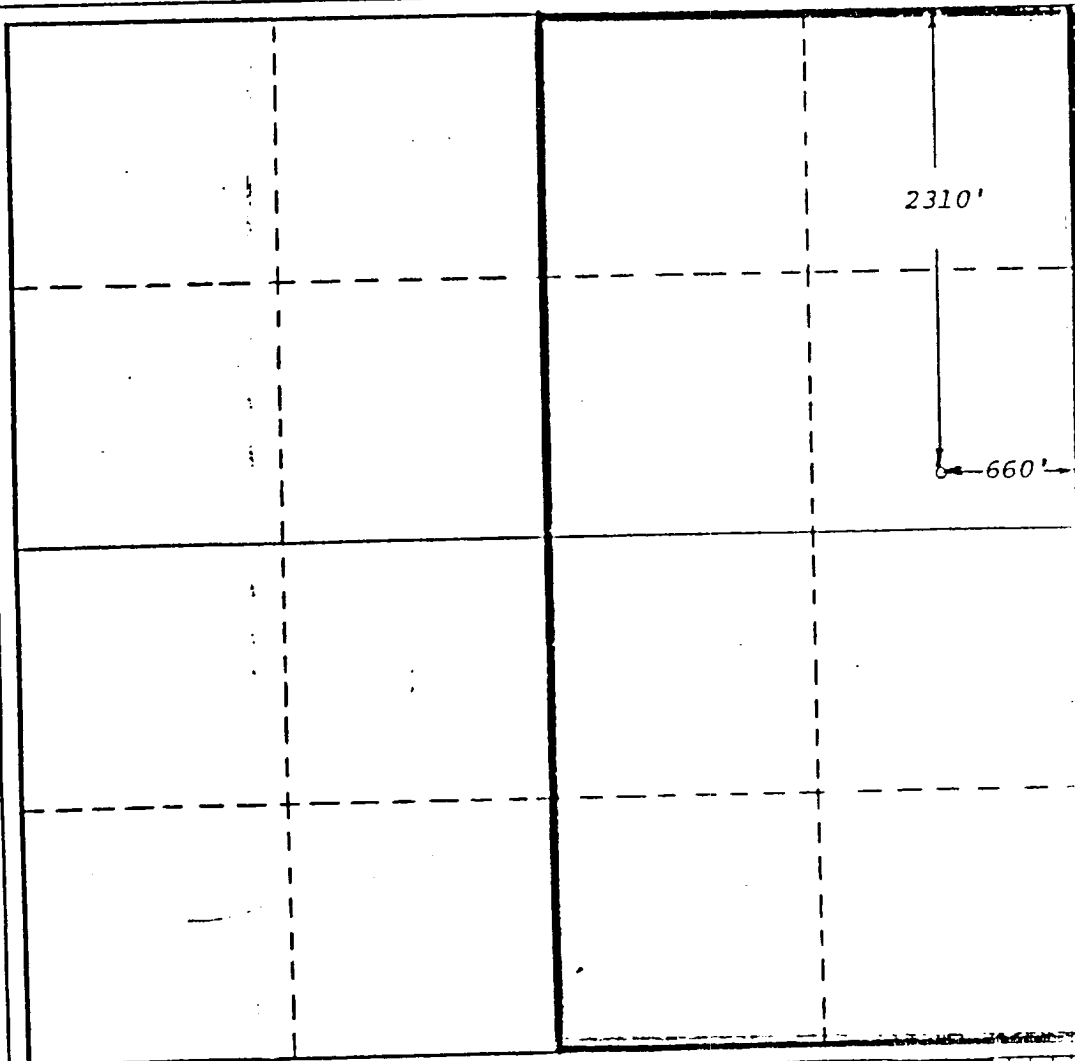
Operator H.N.G. OIL COMPANY			Lease PARDUE 34 COM			Well No. 1		
Unit Letter H	Section 34	Township 23-S	Range 28-E	County EDDY, NEW MEXICO				
Actual Footage Location of Well:								
2310' feet from the NORTH			line and 660' feet from the EAST			line		
Ground Level Elev: 3035'	Producing Formation Bone Springs		Pool S. Culebra Bluff			Dedicated Acreage: 160 NE 1/4 Acres		

1. Outline the acreage dedicated to the subject well by colored pencil or hachure marks on the plat below.
2. If more than one lease is dedicated to the well, outline each and identify the ownership thereof (both as to working interest and royalty).
3. If more than one lease of different ownership is dedicated to the well, have the interests of all owners been consolidated by communitization, unitization, force-pooling, etc?

☒ Yes ☐ No If answer is "yes," type of consolidation Communitization

If answer is "no," list the owners and tract descriptions which have actually been consolidated. (Use reverse side of this form if necessary.)

No allowable will be assigned to the well until all interests have been consolidated (by communitization, unitization, forced-pooling, or otherwise) or until a non-standard unit, eliminating such interests, has been approved by the Commission.



CERTIFICATION

I hereby certify that the information contained herein is true and complete to the best of my knowledge and belief.

Name

Betty A. Gildon

Position

Regulatory Clerk

Company

HNG Oil Company

Date

12/10/86

I hereby certify that the well location shown on this plat was plotted from field notes of actual surveys made by me or under my supervision, and that the same is true and correct to the best of my knowledge and belief.

April 6, 1979

Date Surveyed

Gary D. Boswell

Registered Professional Engineer and/or Land Surveyor

Gary D. Boswell

Certificate No. 6689