

N. XICO OIL CONSERVATION COMMISSION
WELL LOCATION AND ACREAGE DEDICATION PLAT

Form C-102
Supersedes C-128
Effective 1-1-65

All distances must be from the outer boundaries of the Section.

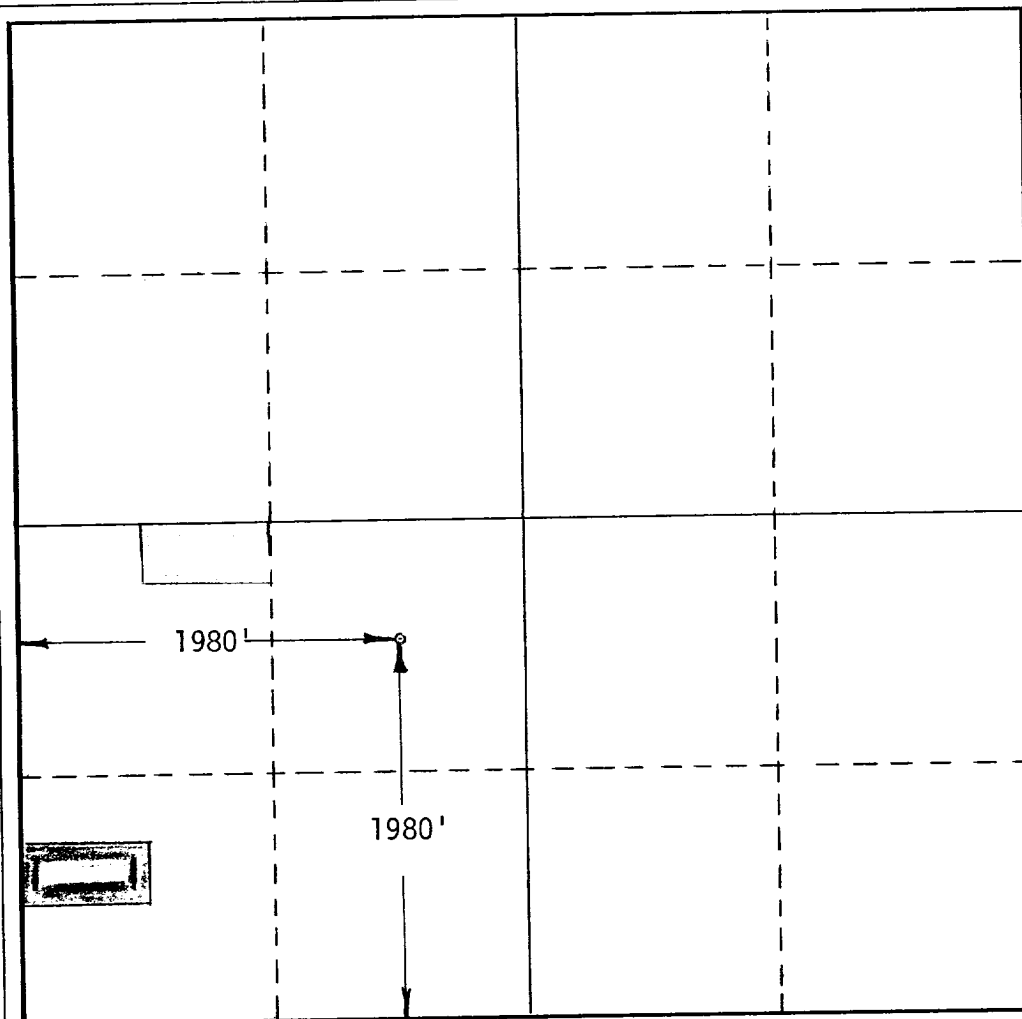
Operator H.N.G. OIL COMPANY		Lease Williams 35 COM.		Well No. 2
Unit Letter K	Section 35	Township 23-S	Range 28-E	County Eddy County, New Mexico
Actual Footage Location of Well: 1980' feet from the South line and 1980' feet from the West line				
Ground Level Elev. 3019'	Producing Formation Morrow	Pool <u>Under</u> South Galena Bluff	Dedicated Acreage: 320 Acres	

1. Outline the acreage dedicated to the subject well by colored pencil or hachure marks on the plat below.
2. If more than one lease is dedicated to the well, outline each and identify the ownership thereof (both as to working interest and royalty).
3. If more than one lease of different ownership is dedicated to the well, have the interests of all owners been consolidated by communitization, unitization, force-pooling, etc?

☐ Yes ☒ No If answer is "yes," type of consolidation Communitization agreement now being circulated for execution.

If answer is "no," list the owners and tract descriptions which have actually been consolidated. (Use reverse side of this form if necessary.) NONE

No allowable will be assigned to the well until all interests have been consolidated (by communitization, unitization, forced-pooling, or otherwise) or until a non-standard unit, eliminating such interests, has been approved by the Commission.



CERTIFICATION

I hereby certify that the information contained herein is true and complete to the best of my knowledge and belief.

Betty A. Gildon

Name
Betty A. Gildon

Position
Regulatory Clerk

Company
HNG Oil Company

Date
June 26, 1979

I hereby certify that the well location shown on this plat was plotted from field notes of actual surveys made by me or under my supervision, and that the same is true and correct to the best of my knowledge and belief.

May 25, 1979

Date Surveyed
Gary D. Boswell

Registered Professional Engineer
and/or Land Surveyor

Gary D. Boswell
Certificate No.

6689

0 330 660 990 1320 1650 1980 2310 2640 2000 1500 1000 500 0