

N MEXICO OIL CONSERVATION COMMISSION
WELL LOCATION AND ACREAGE DEDICATION PLAT

Form C-102
 Supersedes C-128
 Effective 1-1-65

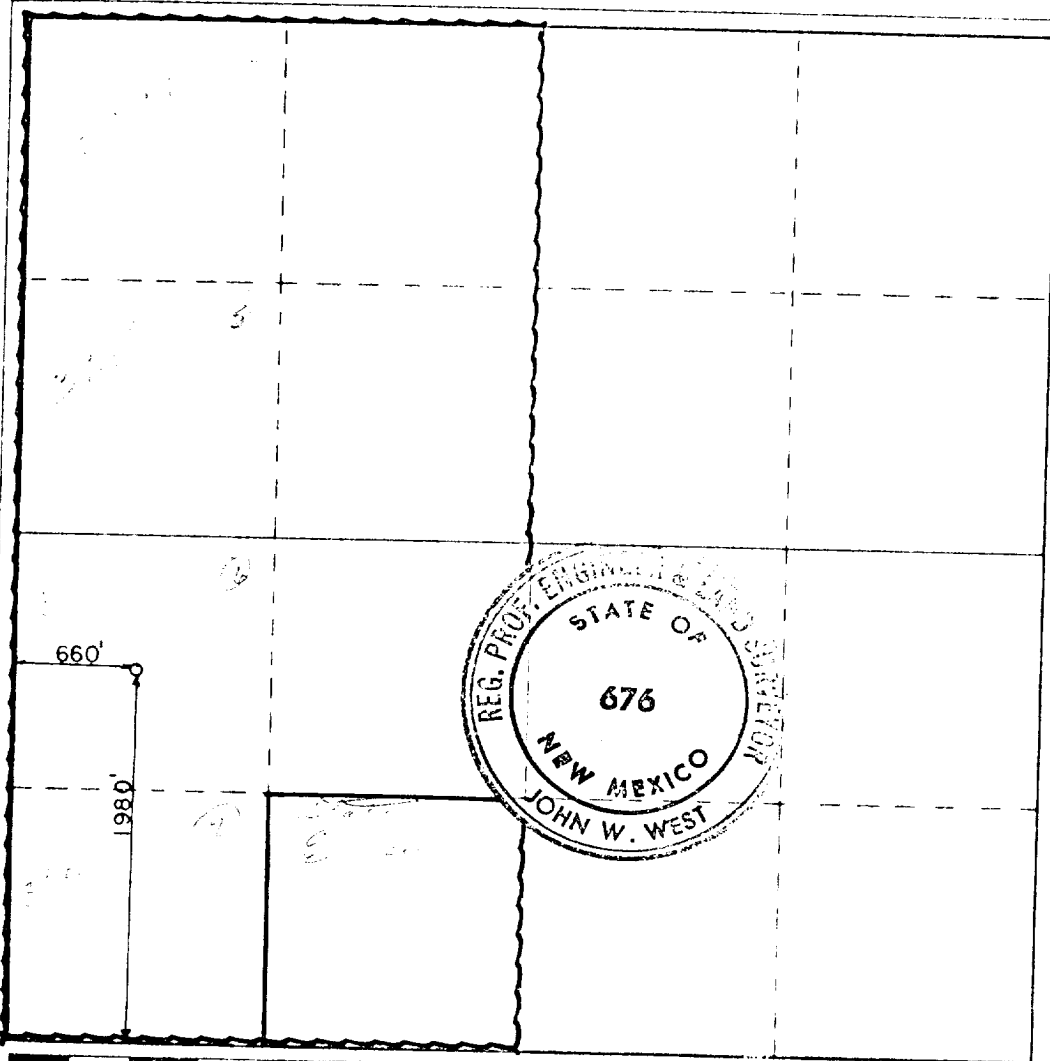
All distances must be from the outer boundaries of the Section

Lessee AMOCO Production Co.			State H.K. Com		Well No. 1
Section L	Section 6	Township 24 South	Range 25 East	County Eddy	
Approximate Location of Well: 1980 feet from the South line and 660 feet from the West line Ground Surface Elev. 3910.0 Producing Formation Morrow Wildcat Morrow Dedicated Acreage 320 Acres					

1. Outline the acreage dedicated to the subject well by colored pencil or machine marks on the plat below.
2. If more than one lease is dedicated to the well, outline each and identify ownership thereof (both as to working interest and royalty).
3. If more than one lease of different ownership is dedicated to the well, have the interests of all owners been consolidated by communitization, unitization, force-pooling, etc?
☐ Yes ☒ No If answer is "yes," type of consolidation Will be communitized if productive

If answer is "no," list the owners and tract descriptions which have actually been consolidated (Use reverse side of this form if necessary.) E-I Paso Natural Gas Co. SE/4 SW/4

No allowable will be assigned to the well until all interests have been consolidated (by communitization, unitization, forced-pooling, or otherwise) or until a non-standard unit, eliminating such interests, has been approved by the Commission.



CERTIFICATION	
I hereby certify that the information contained herein is true and complete to the best of my knowledge and belief.	
By: <i>Lay Cox</i>	
Administrative Supervisor	
Amoco Production Company	
Date: 10-9-79	
I hereby certify that the well location shown on this plat was plotted from field notes of actual surveys made by me or under my supervision, and that the same is true and correct to the best of my knowledge and belief.	
Date surveyed: September 13, 1979	
Registered Professional Engineer and Land Surveyor	
<i>John W. West</i>	
Certificate No.	John W. West 676
	Ronald J. Eidson 3239

