

MEXICO OIL CONSERVATION COMM.
WELL LOCATION AND ACREAGE DEDICATION PLAT

Form C-102
Supersedes C-128
Effective 1-1-65

All distances must be from the outer boundaries of the Section

AMOCO Production Co.			State H.K. Com		Well No. 1
Unit Letter L	Section 6	Township 24 South	Range 25 East	County Eddy	
Actual Well Location of Well:					
1980	feet from the South	line and 660	feet from the West	line	
Ground Level Elev. 3910.0	Producing Formation MORROW <i>Strawn</i>	Point <i>Wildcat Morrow</i>	Dedicated Acreage: 320 319.17 Acres		

- Outline the acreage dedicated to the subject well by colored pencil or machine marks on the plat below.
- If more than one lease is dedicated to the well, outline each and identify ownership thereof (both as to working interest and royalty).
- If more than one lease of different ownership is dedicated to the well, have the interests of all owners been consolidated by communitization, unitization, force-pooling, etc?

RECEIVED

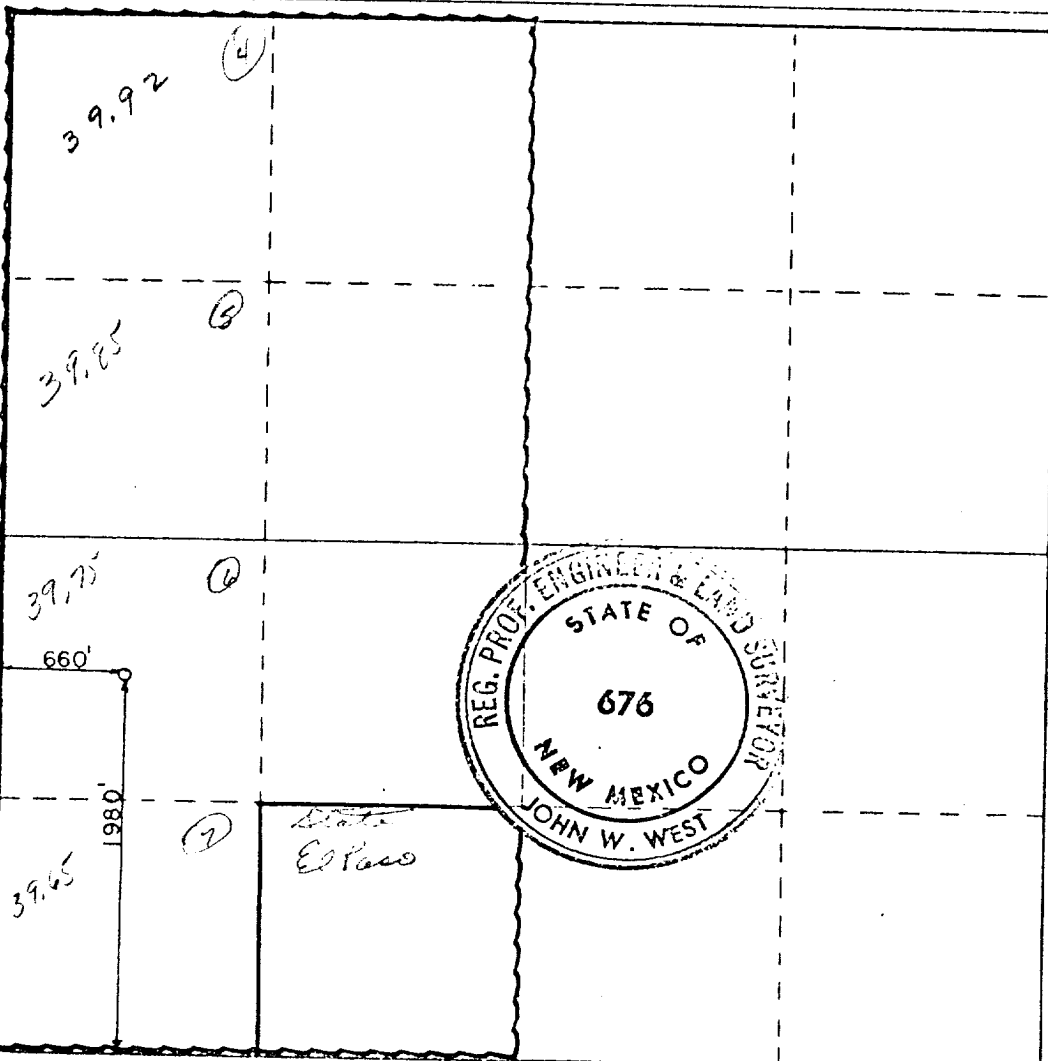
OCT 10 1979

O.C.E.
ARTERIA, OFFICE

☐ Yes ☒ No If answer is "yes," type of consolidation Will be communitized if productive

If answer is "no," list the owners and tract descriptions which have actually been consolidated. (Use reverse side of this form if necessary.) El Paso Natural Gas Co. SE/4 SW/4

No allowable will be assigned to the well until all interests have been consolidated (by communitization, unitization, forced-pooling, or otherwise) or until a non-standard unit, eliminating such interests, has been approved by the Commission.



CERTIFICATION

I hereby certify that the information contained herein is true and complete to the best of my knowledge and belief.

Name *Lay Cx*
Position Administrative Supervisor
Company Amoco Production Company
Date 10-9-79

I hereby certify that the well location shown on this plat was plotted from field notes of actual surveys made by me or under my supervision, and that the same is true and correct to the best of my knowledge and belief.

Date Surveyed September 12, 1979

Registered Professional Engineer and Land Surveyor

John W. West

Certificate No. John W. West