

DISTRIBUTION	
SANTA FE	1
FILE	1 ✓
U.S.G.S.	2
LAND OFFICE	1
OPERATOR	1

NEW MEXICO OIL CONSERVATION COMMISSION

RECEIVED

NOV 26 1979

O. C. C.

OFFICE

1. DATE	X
2. STATE	TX
3. COUNTY	1
4. WELL NO.	L-5103
5. WELL TYPE	Rotary
6. WELL STATUS	Blanket-Active
7. WELL DEPTH	11,700'
8. WELL TYPE	Morrow
9. WELL TYPE	Rotary
10. WELL TYPE	Rotary
11. WELL TYPE	Rotary
12. WELL TYPE	Rotary
13. WELL TYPE	Rotary
14. WELL TYPE	Rotary
15. WELL TYPE	Rotary
16. WELL TYPE	Rotary
17. WELL TYPE	Rotary
18. WELL TYPE	Rotary
19. WELL TYPE	Rotary
20. WELL TYPE	Rotary
21. WELL TYPE	Rotary
22. WELL TYPE	Rotary
23. WELL TYPE	Rotary
24. WELL TYPE	Rotary
25. WELL TYPE	Rotary
26. WELL TYPE	Rotary
27. WELL TYPE	Rotary
28. WELL TYPE	Rotary
29. WELL TYPE	Rotary
30. WELL TYPE	Rotary
31. WELL TYPE	Rotary
32. WELL TYPE	Rotary
33. WELL TYPE	Rotary
34. WELL TYPE	Rotary
35. WELL TYPE	Rotary
36. WELL TYPE	Rotary
37. WELL TYPE	Rotary
38. WELL TYPE	Rotary
39. WELL TYPE	Rotary
40. WELL TYPE	Rotary
41. WELL TYPE	Rotary
42. WELL TYPE	Rotary
43. WELL TYPE	Rotary
44. WELL TYPE	Rotary
45. WELL TYPE	Rotary
46. WELL TYPE	Rotary
47. WELL TYPE	Rotary
48. WELL TYPE	Rotary
49. WELL TYPE	Rotary
50. WELL TYPE	Rotary
51. WELL TYPE	Rotary
52. WELL TYPE	Rotary
53. WELL TYPE	Rotary
54. WELL TYPE	Rotary
55. WELL TYPE	Rotary
56. WELL TYPE	Rotary
57. WELL TYPE	Rotary
58. WELL TYPE	Rotary
59. WELL TYPE	Rotary
60. WELL TYPE	Rotary
61. WELL TYPE	Rotary
62. WELL TYPE	Rotary
63. WELL TYPE	Rotary
64. WELL TYPE	Rotary
65. WELL TYPE	Rotary
66. WELL TYPE	Rotary
67. WELL TYPE	Rotary
68. WELL TYPE	Rotary
69. WELL TYPE	Rotary
70. WELL TYPE	Rotary
71. WELL TYPE	Rotary
72. WELL TYPE	Rotary
73. WELL TYPE	Rotary
74. WELL TYPE	Rotary
75. WELL TYPE	Rotary
76. WELL TYPE	Rotary
77. WELL TYPE	Rotary
78. WELL TYPE	Rotary
79. WELL TYPE	Rotary
80. WELL TYPE	Rotary
81. WELL TYPE	Rotary
82. WELL TYPE	Rotary
83. WELL TYPE	Rotary
84. WELL TYPE	Rotary
85. WELL TYPE	Rotary
86. WELL TYPE	Rotary
87. WELL TYPE	Rotary
88. WELL TYPE	Rotary
89. WELL TYPE	Rotary
90. WELL TYPE	Rotary
91. WELL TYPE	Rotary
92. WELL TYPE	Rotary
93. WELL TYPE	Rotary
94. WELL TYPE	Rotary
95. WELL TYPE	Rotary
96. WELL TYPE	Rotary
97. WELL TYPE	Rotary
98. WELL TYPE	Rotary
99. WELL TYPE	Rotary
100. WELL TYPE	Rotary

APPLICATION FOR PERMIT TO DRILL, DEEPEN, OR PLUG BACK

1a. Type of Work	
DRILL <input checked="" type="checkbox"/>	DEEPEN <input type="checkbox"/>
1b. Type of Well	
OIL WELL <input type="checkbox"/>	GAS WELL <input checked="" type="checkbox"/>
2. Name of Operator	
HNG Oil Company	
3. Address of Operator	
P. O. Box 2267, Midland, Texas 79702	
4. Location of Well	
UNIT LETTER A	LOCATED 858 FEET FROM THE North LINE
AND 1038 FEET FROM THE East LINE OF SEC. 10	23-S 25-E
5. Elevation (Show whether DI, RT, etc.)	
3731' GR	
6. Kind of Status Blanket	
Blanket-Active	
7. Drilling Contractor	
Parker Drilling Company	
8. Date of Permit	
December 15, 1979	

PROPOSED CASING AND CEMENT PROGRAM

SIZE OF HOLE	SIZE OF CASING	WEIGHT PER FOOT	SETTING DEPTH	SACKS OF CEMENT	EST. TOP
17-1/2"	13-3/8"	54.5#	500'	700	Circ.
12-1/4"	9-5/8"	36#	2500'	1500	Circ.
8-1/2"	5-1/2"	15.5#	11700	850	9000'

BOP - Install at 2500' w/5000# cap. & 3000# annular preventer.
Will use standard surface controlled BOP installation.

Acreage is not dedicated.

FOR 10 DAYS
DRILLING COMMENCED,

EXPIRES 3-26-80

IN ABOVE SPACE DESCRIBE PROPOSED PROGRAM; IF PROPOSAL IS TO DEEPEN OR PLUG BACK, GIVE DATA ON PRESENT PRODUCTIVE ZONE AND PROPOSED NEW PRODUCTIVE ZONE. GIVE BLOWOUT PREVENTER PROGRAM, IF ANY.

I hereby certify that the information above is true and complete to the best of my knowledge and belief.

Signed Betty A. Gildon Title Regulatory Clerk Date November 21, 1979

(This space for State Use)

APPROVED BY W. A. Grissett TITLE SUPERVISOR, DISTRICT # DATE DEC 26 1979

CONDITIONS OF APPROVAL, IF ANY:

Cement must be circulated to
surface behind 13 3/8" casing

Notify N.M.O.C.C. in sufficient
time to witness cementing
the 9 5/8" casing

NL MEXICO OIL CONSERVATION COMMISS.
WELL LOCATION AND ACREAGE DEDICATION PLAT

Form C-102
Supersedes C-128
Effective 1-1-65

All distances must be from the outer boundaries of the Section.

Operator H.N.G. OIL CO.		Lease Rock Tank 10 State		Well No. 1
Unit Letter A	Section 10	Township T-23S	Range R-25E	County Eddy
Actual Location of Well: 858' feet from the North line and 1038' feet from the East line.				
Ground Level Elev. 3731'	Producing Formation Morrow	Pool Wildcat	Dedicated Acreage 320 Acres	

1. Outline the acreage dedicated to the subject well by colored pencil or hatchure marks on the plat below.

RECEIVED

2. If more than one lease is dedicated to the well, outline each and identify the ownership thereof (both as to working interest and royalty).

NOV 26 1979

3. If more than one lease of different ownership is dedicated to the well, have the interests of all owners been consolidated by communitization, unitization, force-pooling, etc?

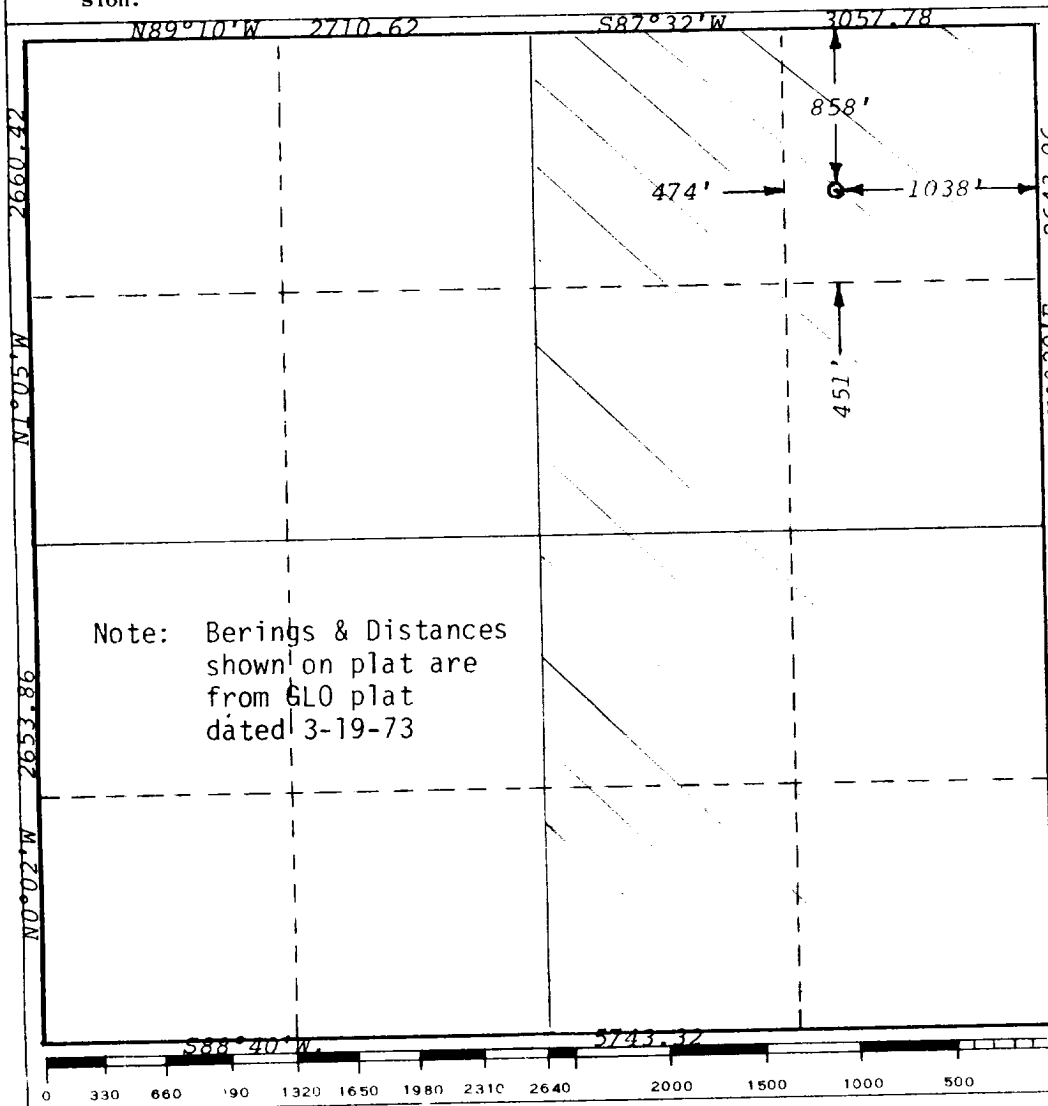
O. C. C.

ARTESIA, OFFICE

☐ Yes ☐ No If answer is "yes," type of consolidation _____

If answer is "no," list the owners and tract descriptions which have actually been consolidated. (Use reverse side of this form if necessary.) _____

No allowable will be assigned to the well until all interests have been consolidated (by communitization, unitization, forced-pooling, or otherwise) or until a non-standard unit, eliminating such interests, has been approved by the Commission.



CERTIFICATION

I hereby certify that the information contained herein is true and complete to the best of my knowledge and belief.

Betty A. Gildon

Name

Betty A. Gildon

Position

Regulatory Clerk

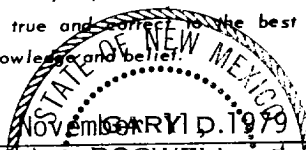
Company

HNG Oil Company

Date

November 21, 1979

I hereby certify that the well location shown on this plat was plotted from field notes of actual surveys made by me or under my supervision, and that the same is true and correct to the best of my knowledge and belief.



Date Surveyed

GARY D. BOSWELL

Registered Professional Engineer and/or Land Surveyor

Gary D. Boswell

Certification No.

6689

RECEIVED

DEC 3 - 1979

CAMPBELL AND BLACK, P.A.
LAWYERS

JACK M. CAMPBELL
BRUCE D. BLACK
MICHAEL B. CAMPBELL
WILLIAM F. CARR
PAUL R. CALDWELL

O. C. C.
ARTESIA, OFFICE
POST OFFICE BOX 2208
JEFFERSON PLACE
SANTA FE, NEW MEXICO 87501
TELEPHONE (505) 968-4421

November 30, 1979

Oil Conservation Division
New Mexico Department of Energy and Minerals
Post Office Box 2088
Santa Fe, New Mexico 87501

Re: Application of HNG Oil Company for Administrative
Approval of an Unorthodox Well Location, Eddy
County, New Mexico

Gentlemen:

Enclosed is the application of HNG Oil Company for approval of the unorthodox well location of its Rock Tank 10 State Well #1 to be located 858 feet from the north line and 1038 feet from the east line of Section 10, Township 23 South, Range 25 East, Eddy County, New Mexico. This unorthodox location is necessary due to the rough terrain in the area. All offset owners have been notified of this application by certified mail. As soon as waivers are received, we will submit them to you to be included with this application.

Your attention to this matter is appreciated.

Very truly yours,

William F. Carr

WFC:lr

Enclosure

cc: Mr. Tom Pickering
Mr. W. A. Gressett



STATE OF NEW MEXICO
ENERGY AND MINERALS DEPARTMENT
OIL CONSERVATION DIVISION

BRUCE KING
GOVERNOR

LARRY KEHOE
SECRETARY

December 20, 1979

POST OFFICE BOX 2088
STATE LAND OFFICE BUILDING
SANTA FE, NEW MEXICO 87501
(505) 827-2434

RECEIVED

DEC 26 1979

O. C. D.
ARTESIA, CITY

Campbell and Black
P. O. Box 2208
Santa Fe, New Mexico 87501

Attention: William F. Carr

Administrative Order NSL-1112

Gentlemen:

Reference is made to your application on behalf of HNG Oil Company for a non-standard location for their Rock Tank 10 State Well No. 1 to be located 858 feet from the North line and 1038 feet from the East line of Section 10, Township 23 South, Range 25 East, NMPM, Sheep Draw Field, Eddy County, New Mexico.

By authority granted me under the provisions of Rule 104 F, the above-described unorthodox location for HNG Oil Company is hereby approved.

Sincerely,

JOE D. RAMEY,
Director

JDR/RLS/dr

cc: Oil Conservation Division - Artesia
Oil & Gas Engineering Committee - Hobbs
Oil & Gas Division - State Land Office - Santa Fe

EXHIBIT "B"

Attached to and made a part of that certain Operating Agreement dated November 1, 1979 between HNG Oil Company, Operator, and Dow Chemical Company, et al, Non-Operators

1	2	3	4	5	6	7	8	9	10	11	12	13	14	15	16	17	18	19	20	21	22	23	24	25	26	27	28	29	30	31	32	33	34	35	36	37	38	39	40	41	42	43	44	45	46	47	48	49	50	51	52	53	54	55	56	57	58	59	60	61	62	63	64	65	66	67	68	69	70	71	72	73	74	75	76	77	78	79	80	81	82	83	84	85	86	87	88	89	90	91	92	93	94	95	96	97	98	99	100
1	2	3	4	5	6	7	8	9	10	11	12	13	14	15	16	17	18	19	20	21	22	23	24	25	26	27	28	29	30	31	32	33	34	35	36	37	38	39	40	41	42	43	44	45	46	47	48	49	50	51	52	53	54	55	56	57	58	59	60	61	62	63	64	65	66	67	68	69	70	71	72	73	74	75	76	77	78	79	80	81	82	83	84	85	86	87	88	89	90	91	92	93	94	95	96	97	98	99	100