

UNITED STATES
DEPARTMENT OF THE INTERIOR
GEOLOGICAL SURVEY

APPLICATION FOR PERMIT TO DRILL, DEEPEN, OR PLUG BACK

1a. TYPE OF WORK

DRILL ☒DEEPEN ☐PLUG BACK ☐

b. TYPE OF WELL

OIL
WELL ☒GAS
WELL ☐

OTHER

SINGLE
ZONE ☐REMOVED
ZONE ☐

2. NAME OF OPERATOR

C & K Petroleum, Inc.

3. ADDRESS OF OPERATOR

P.O. Drawer 3546, Midland, Texas 79702

4. LOCATION OF WELL (Report location clearly and in accordance with any State requirements.)

At surface

At proposed prod. zone 1631' FSL & 1781' FEL, Sec. 8, T-24-S, R-26-E,
Eddy Co., Tx.

14. DISTANCE IN MILES AND DIRECTION FROM NEAREST TOWN OR POST OFFICE*

3-1/2 miles Northwest, Blackriver, New Mexico

15. DISTANCE FROM PROPOSED*

LOCATION TO NEAREST
PROPERTY OR LEASE LINE, FT.
(Also to nearest drlg. unit line, if any)

1707'

16. NO. OF ACRES IN LEASE

1840 -

17. NO. OF ACRES ASSIGNED
TO THIS WELL

40

18. DISTANCE FROM PROPOSED LOCATION*
TO NEAREST WELL, DRILLING, COMPLETED,
OR APPLIED FOR, ON THIS LEASE, FT.

73'

19. PROPOSED DEPTH

3000'

20. ROTARY OR CABLE TOOLS

Rotary

21. ELEVATIONS (Show whether DF, RT, GR, etc.)

3481.9 Gr.

22. APPROX. DATE WORK WILL START*

Upon Approval

23.

PROPOSED CASING AND CEMENTING PROGRAM

SIZE OF HOLE	SIZE OF CASING	WEIGHT PER FOOT	SETTING DEPTH	QUANTITY OF CEMENT
11"	8-5/8"	24#	2000'	1500 sx - circ.
7-7/8"	5-1/2"	14#	3000'	450 sx.

NOTE: Mud program, blow out preventer and location sketch are attached.

RECEIVED

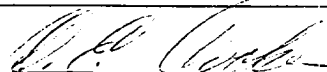
JAN 3 1980

U.S. GEOLOGICAL SURVEY
ARTESIA, NEW MEXICO

IN ABOVE SPACE DESCRIBE PROPOSED PROGRAM: If proposal is to deepen or plug back, give data on present productive zone and proposed new productive zone. If proposal is to drill or deepen directionally, give pertinent data on subsurface locations and measured and true vertical depths. Give blowout preventer program, if any.

24.

SIGNED



TITLE Admin. Supervisor

DATE

December 31, 1979

(This space for Federal or State office use)

PERMIT NO.

APPROVAL DATE

1-21-80

APPROVED BY

TITLE

DATE

CONDITIONS OF APPROVAL, IF ANY:

*See Instructions On Reverse Side

NEW MEXICO OIL CONSERVATION COMMISSION
WELL LOCATION AND ACREAGE DEDICATION PLAT

Form C-102
Supersedes C-128
Effective 1-1-65

All distances must be from the outer boundaries of the Section

Operator C & K Petroleum Inc.			Lease CK Federal		Well No. 2-Y
Unit Letter J	Section 8	Township 24 South	Range 26 East	County Eddy	
Actual Footage Location of Well: 1631 feet from the South line and 1781 feet from the East line					
Ground Level Elev. 3481.9	Producing Formation Delaware		Pool Wildcat	Dedicated Acreage: 40 Acres	

1. Outline the acreage dedicated to the subject well by colored pencil or hachure marks on the plat below.
2. If more than one lease is dedicated to the well, outline each and identify the ownership thereof (both as to working interest and royalty).
3. If more than one lease of different ownership is dedicated to the well, have the interests of all owners been consolidated by communitization, unitization, force-pooling, etc?

☐ Yes ☐ No If answer is "yes," type of consolidation _____

If answer is "no," list the owners and tract descriptions which have actually been consolidated. (Use reverse side of this form if necessary.) _____

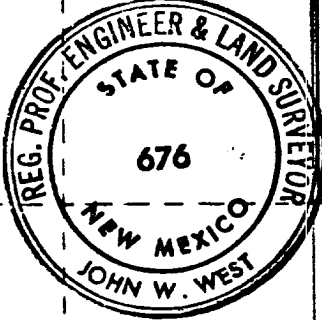
No allowable will be assigned to the well until all interests have been consolidated (by communitization, unitization, forced-pooling, or otherwise) or until a non-standard unit, eliminating such interests, has been approved by the Commission.

RECEIVED

JAN 3 1980

U.S. GEOLOGICAL SURVEY
ARTESIA, NEW MEXICO

NM-15295
40 Acres



1781'

1631'

CERTIFICATION

I hereby certify that the information contained herein is true and complete to the best of my knowledge and belief.

Name
Administrative Supervisor

Position
C & K Petroleum, Inc.

Company
September 14, 1979

Date

I hereby certify that the well location shown on this plat was plotted from field notes of actual surveys made by me or under my supervision, and that the same is true and correct to the best of my knowledge and belief.

Date Surveyed
September 4, 1979

Registered Professional Engineer
and or Land Surveyor

Certificate No. **John W. West 676**
Ronald J. Eidson 3239

0 500 1000 1500 2000 2500 2840 2310 1980 1680 1320 90 640 320



United States Department of the Interior

RECEIVED

GEOLOGICAL SURVEY

JAN 22 1980

P. O. Drawer U
Artesia, New Mexico 88210

O. C. D.

ARTESIA, OFFICE

January 21, 1980

C & K Petroleum, Inc.
P. O. Drawer 3546
Midland, Texas 79702

Gentlemen:

C & K PETROLEUM, INC.
"CK" Federal No. 2-Y
1631 FSL 1781 FEL Sec. 8 T.24S R.26E
Eddy County Lease No. NM 15295

Above Data Required on Well Sign

Your APPLICATION FOR PERMIT TO DRILL the above-described well to a depth of 3,000 feet to test the Delaware formation is hereby approved subject to compliance with the OIL AND GAS OPERATING REGULATIONS (30 CFR 221) and the following conditions:

1. Drilling operations authorized are subject to compliance with the GENERAL REQUIREMENTS FOR OIL AND GAS OPERATIONS ON FEDERAL LEASES, dated July 1, 1978.
2. Prior to commencing construction of road, pad, or other associated developments, operator will provide the dirt contractor with a copy of the SURFACE USE PLAN and this approval including the GENERAL REQUIREMENTS.
3. Submit a Daily Report of Operations from spud date until the Well Completion Report (form 9-330) is filed. The progress report should be not less than 8" x 5" in size and each page should identify the well.
4. All permanent above-ground structures and equipment shall be painted in accordance with the attached Painting Requirements. The color used should simulate Sandstone Brown (Federal Standard No. 595A, color 20318 or 30318).
5. Cement behind the 8-5/8" casing must be circulated.
6. Please have anyone contacting the Survey in regard to this well to identify the well with all of the information required above for the well sign.

Sincerely yours,

George H. Stewart
Acting District Engineer



C & K Petroleum, Inc.
Well No.2-Y CK Federal Lease No. NM-15295
1631 FSL & 1781 FEL, Sec. 8, T-24-S, R-26-E
N.M.P.M., Eddy County, New Mexico

To supplement U.S.G.S. Form 9-331C, "Application to Drill", the following additional information is submitted:

1. See Form 9-331C
2. See Form 9-331C
3. The geologic name of the surface formation is : Tertiary with some Triassic exposed.
4. See Form 9-331C
5. See Form 9-331C
6. The estimated top of important geological marker is the Delaware @ 2691'.
7. The estimated depths at which anticipated water, oil, gas or other mineral bearing formations are expected to be are:

Water Formations	---	None
Delaware	---	2691' Oil & Gas
8. The proposed casing program including the size, grade and weight-per-foot of each string has been indicated on Form 9-331C. All strings of casing will be new.
9. See Form 9-331C for amount of cement. Type of cement as follows:

Surface Casing:	Will use 1st stage CaCl cement containing 50-50 Poz Mix, 1/4# Flo Cele per sx. 2% gel, 6% CFR-2 along with 8# salt per sx. 2nd stage will use Class "C" neat cement along with 8# salt per sx.
Oil String:	Will use Class "H", 6/10 of 1% Allied "22" with 5# salt per sx.

10. The pressure control diagram is attached to Form 9-331C. The following additional information of the pressure control equipment is as follows:

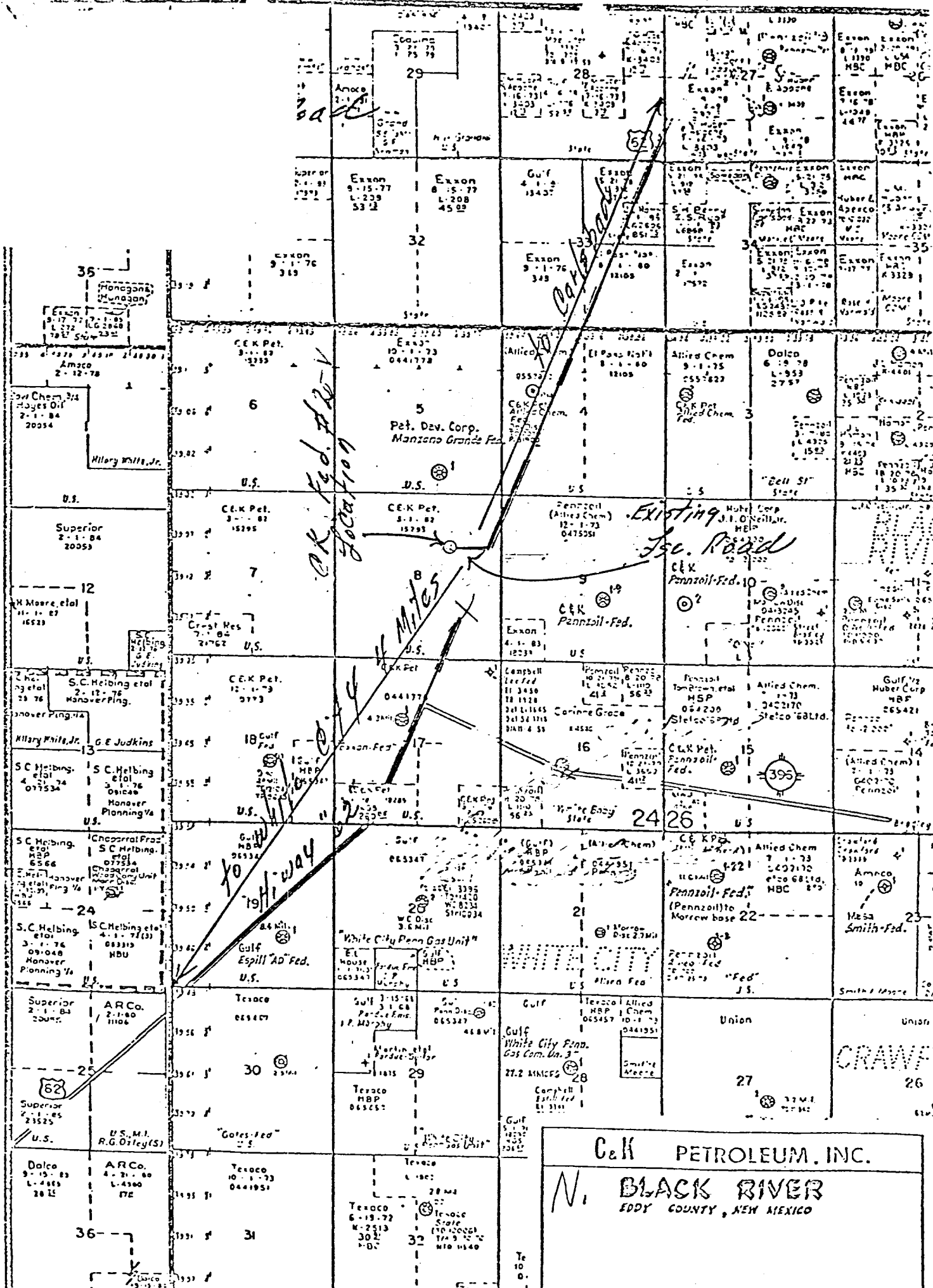
Size: 8" - 900' Series - Dbl Hyd BOP with Blind Rams and Pipe Rams
Pressure Ratings (or API Series) - 3000 WP - 6000 Test
Testing Procedures: Pressure up to 1500# PSIG before drilling out of casing.
Testing Frequency: Upon installation, daily and on all trips.

11. The type and characteristics of the proposed circulating medium or mediums to be employed for rotary drilling, and the quantities and types of mud and weight-ing material to maintained will be as follows:

Depth (ft)	Mud Weight (ppg)	Viscosity(sec/qt)	API Filtrate(ml)
0' - 2000'	8.6-9.2	34-40	NC
Spud the well with drilling gel and Lime for sufficient viscosity to clean the hole and set 8-5/8" casing. Mix DMI Paper to control seepage. In case of loss of circulation, mix LCM.			
2000'-2800	9.7-10.0	28-29	NC
Drill out with brine water, circulating the reserve pit. Mix Jet Jel at the flow line as needed for settling solids. Mix DMI Paper for seepage control.			

If no hole problems have occurred at total depth, sweep the hole before logging and running pipe. If hole problems are experienced, mud up with a Salt Gel/Starch system.

12. The auxiliary equipment to be used: None necessary
13. We do not plan any DST or Coring; Will run GR Sonic and Resistivity Logs.
14. No abnormal pressures anticipated.
15. The starting date will be upon approval of our application to drill. The completion date will be approximately 7 days from spud date.



CK FEDERAL # I & 2-7
Edy Co NM

DMI

Drilling Fluid Recommendations

Date September 11, 1979

Company C & K Petroleum, Inc.

Location Sec. 8, T-24-S, R-26-E

Well Name Deleware Prospect

County Eddy

State New Mexico

CASING PROGRAM

8-5/8" @ 2000'

5-1/2" @ ~~2000'~~ ^{3000'}

RECOMMENDED DRILLING FLUID PROGRAM

Depth ft	Mud Weight ppg	Viscosity sec/qt	API Filtrate ml		
0' - 2000'	8.6-9.2	34-40	NC	Spud the well with Drilling Gel and Lime for sufficient viscosity to clean the hole and set 8-5/8" casing. Mix DMI Paper to control seepage. In case of loss of circulation, mix LCM.	
2000' - 2800' ^{3000'}	9.7-10.0	28-29	NC	Drill out with brine water, circulating the reserve pit. Mix Jet Jel at the flow line as needed for settling solids. Mix DMI Paper for seepage control. If no hole problems have occurred at total depth, sweep the hole before logging and running pipe. If hole problems are experienced, mud up with a Salt Gel/Starch system.	

DMI

OPERATOR C & K Petroleum, Inc.WELL NAME & NO. Delaware ProspectCOUNTY Eddy STATE New Mexico

Drilling Mud Recommendations

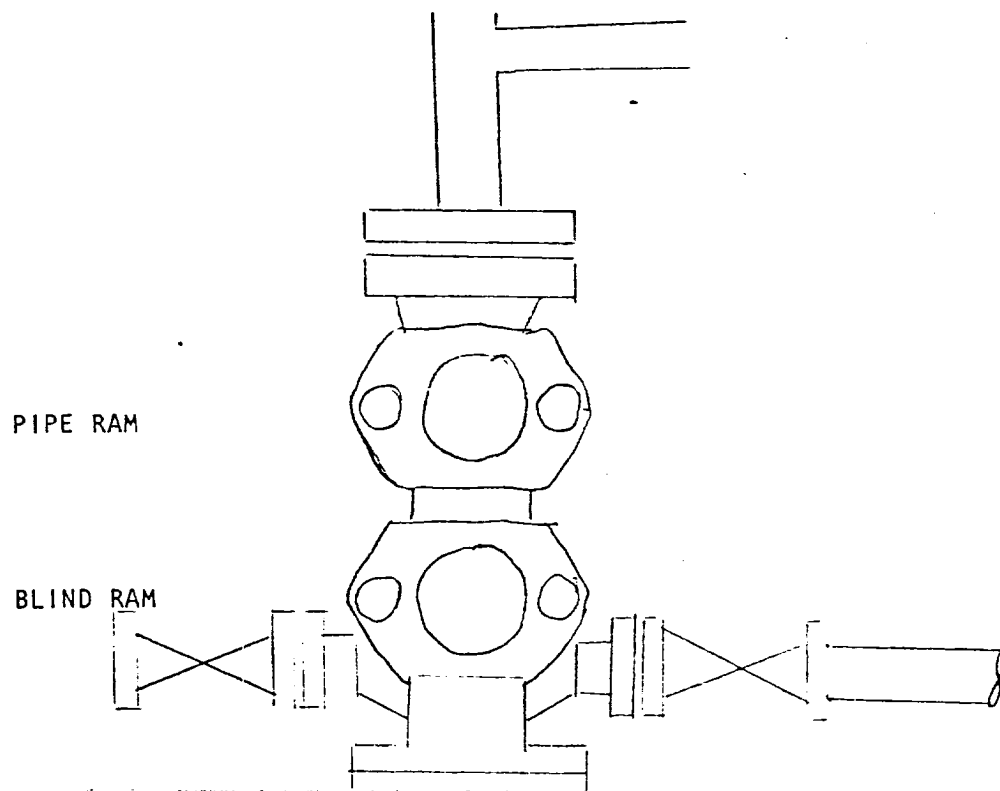
0' - 2000'

Spud this well in the normal manner, mixing Drilling Gel and Lime for sufficient viscosity to clean the hole and to set 8-5/8" casing. Mix DMI Paper for seepage control. There is a possibility of severe loss of circulation during this interval. If this occurs, we suggest spotting up to 2 pills of LCM. If this does not regain circulation, dry drill to pipe depth.

2000' - ^{5000'}~~2200'~~

Drill out with brine water. Circulate the reserve pit. Mix Jet Jel at the flow line as needed to aid in settling solids. Add DMI Paper as needed to control seepage. If no hole problems are experienced during this interval, sweep the hole before logging or running casing. If hole problems develop, mud up with a Salt Gel/Starch system.

Weight - 9.7 to 10.2
Viscosity - 32 to 38
Water Loss - 15 cc



GROUND LEVEL

Size: 8" - 900 Series
Dbl. Hyd. BOP
With Blind Rams
and Pipe Rams

