

N MEXICO OIL CONSERVATION COMMIS. V
WELL LOCATION AND ACREAGE DEDICATION PLAT

Form C-102
Supersedes C-128
Effective 1-1-65

All distances must be from the outer boundaries of the Section.

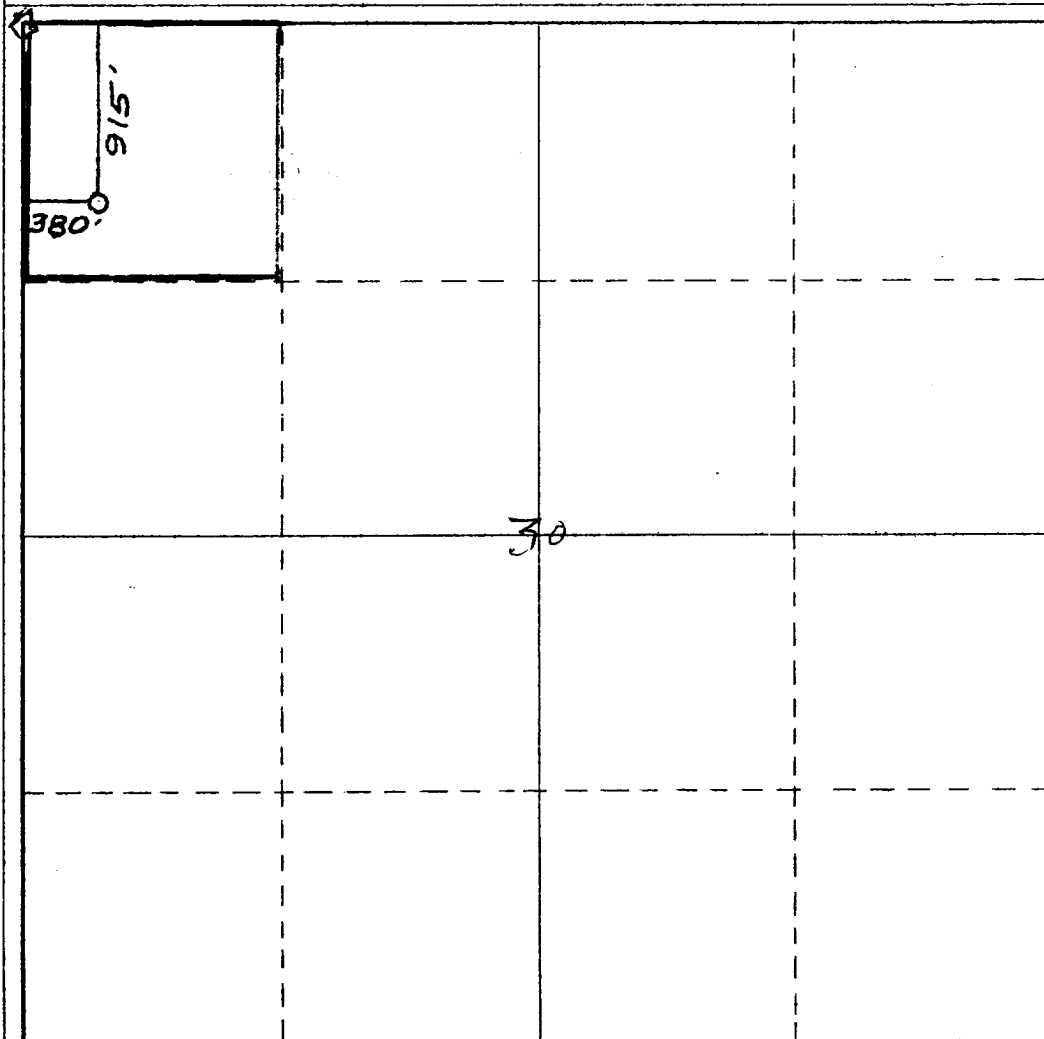
Operator ORLA PETCO, Inc		Lease Ferguson		Well No. 1	
Unit Letter D	Section 30	Township 22 South	Range 28 East	County Eddy	
Actual Footage Location of Well: 915 feet from the North line and 380 feet from the West line					
Ground Level Elev. 3075.	Producing Formation Delaware Sand		Pool Undesignated (Delaware)		Dedicated Acreage: 40 Acres

1. Outline the acreage dedicated to the subject well by colored pencil or hachure marks on the plat below.
2. If more than one lease is dedicated to the well, outline each and identify the ownership thereof (both as to working interest and royalty).
3. If more than one lease of different ownership is dedicated to the well, have the interests of all owners been consolidated by communitization, unitization, force-pooling, etc?

☐ Yes ☐ No If answer is "yes," type of consolidation _____

If answer is "no," list the owners and tract descriptions which have actually been consolidated. (Use reverse side of this form if necessary.) _____

No allowable will be assigned to the well until all interests have been consolidated (by communitization, unitization, forced-pooling, or otherwise) or until a non-standard unit, eliminating such interests, has been approved by the Commission.



CERTIFICATION

I hereby certify that the information contained herein is true and complete to the best of my knowledge and belief.

James M.C. Ritchie, Jr.
Name

James M.C. Ritchie, Jr.
Position

Vice-President
Company

Orla Petco, Inc.
Date

May 7, 1980

I hereby certify that the well location shown on this plat was plotted from field notes of actual surveys made by me or under my supervision, and that the same is true and correct to the best of my knowledge and belief.

John L. Luby
Date Surveyed

May 5, 1980

Registered Professional Engineer
and/or Land Surveyor

Certificate No.
NM LS #220

