

UNITED STATES  
DEPARTMENT OF THE INTERIOR  
GEOLOGICAL SURVEY

## APPLICATION FOR PERMIT TO DRILL, DEEPEN, OR PLUG BACK

## 1a. TYPE OF WORK

DRILL ☒DEEPEN ☐PLUG BACK ☐

## b. TYPE OF WELL

OIL  
WELL ☐GAS  
WELL ☒OTHER ☐SINGLE  
ZONE ☒MULTIPLE  
ZONE ☐

## 2. NAME OF OPERATOR

PERRY R. BASS

## 3. ADDRESS OF OPERATOR

P O BOX 2760 MIDLAND TX 79702

## 4. LOCATION OF WELL (Report location clearly and in accordance with any State requirements.)

At surface

1980' FSL &amp; 760' FEL, SEC 10, T-22S, R-28-E

At proposed prod. zone

## 14. DISTANCE IN MILES AND DIRECTION FROM NEAREST TOWN OR POST OFFICE\*

10 miles east of Carlsbad, NM

## 15. DISTANCE FROM PROPOSED\*

LOCATION TO NEAREST  
PROPERTY OR LEASE LINE, FT.  
(Also to nearest drg. unit line, if any)

660'

18. DISTANCE FROM PROPOSED LOCATION\*  
TO NEAREST WELL, DRILLING COMPLETED,  
OR APPLIED FOR, ON THIS LEASE, FT.

## 16. NO. OF ACRES IN LEASE

## 19. PROPOSED DEPTH

13,000

17. NO. OF ACRES ASSIGNED  
TO THIS WELL

320

## 20. ROTARY OR CABLE TOOLS

Rotary

## 21. ELEVATIONS (Show whether DF, RT, GR, etc.)

3136' GL

## 22. APPROX. DATE WORK WILL START\*

Upon Approval

## 23.

## PROPOSED CASING AND CEMENTING PROGRAM

SIZE OF HOLE	SIZE OF CASING	WEIGHT PER FOOT	SETTING DEPTH	QUANTITY OF CEMENT
15"	11 3/4"	42#	400'	300 sx <b>CIRCULATE</b>
11"	8 5/8"	24# & 28#	2650'	1000 sx
7 7/8"	5 1/2"	17	TD	800 sx

Drilling procedure, BOPE Diagrams, anticipated formation tops and surface  
use plans are attached.

Gas is dedicated.

**RECEIVED**

NOV 14 1980

U.S. GEOLOGICAL SURVEY  
ARTESIA, NEW MEXICO

IN ABOVE SPACE DESCRIBE PROPOSED PROGRAM: If proposal is to deepen or plug back, give data on present productive zone and proposed new productive zone. If proposal is to drill or deepen directionally, give pertinent data on subsurface locations and measured and true vertical depths. Give blowout preventer program, if any.

## 24.

SIGNED

*Mike Waygood*

TITLE — Engineering Assistant —

DATE 11-6-80

(This space for Federal or State office use)

PERMIT NO.

APPROVAL DATE

APPROVED BY (Orig. Sgd.) PETER W. CHESTER

TITLE ACTING DISTRICT ENGINEER

DATE DEC 8 1980

CONDITIONS OF APPROVAL, IF ANY:

\*See Instructions On Reverse Side

UNITED STATES  
DEPARTMENT OF THE INTERIOR  
GEOLOGICAL SURVEYSUBMIT IN TRIPLICATE\*  
(Other instructions on re-  
verse side)Form approved.  
Budget Bureau No. 42-R1424.

5. LEASE DESIGNATION AND SERIAL NO.

NM--069142 -A

6. IF INDIAN, ALLOTTEE OR TRIBE NAME

## SUNDRY NOTICES AND REPORTS ON WELLS

(Do not use this form for proposals to drill or to deepen or plug back to a different reservoir.  
Use "APPLICATION FOR PERMIT—" for such proposals.)

1. OIL WELL <input type="checkbox"/> GAS WELL <input checked="" type="checkbox"/> OTHER		7. UNIT AGREEMENT NAME	
2. NAME OF OPERATOR		BIG EDDY UNIT	
3. ADDRESS OF OPERATOR		8. FARM OR LEASE NAME	
P. O. BOX 276C, MIDLAND TEXAS 79702		BIG EDDY UNIT	
4. LOCATION OF WELL (Report location clearly and in accordance with any State requirements. See also space 17 below.) At surface		9. WELL NO.	
1980' FSL & 760' FEL, SEC. 10, T22S, R28E		82	
14. PERMIT NO.		10. FIELD AND POOL, OR WILDCAT	
15. ELEVATIONS (Show whether DF, RT, GR, etc.)		SW INDIAN FLATS MORROW	
3136 EST. GL		11. SEC., T., R., M., OR BLK. AND SURVEY OR AREA	
		SEC. 10, T22S, R28E	
		12. COUNTY OR PARISH	
		EDDY	
		13. STATE	
		NM	

## 16. Check Appropriate Box To Indicate Nature of Notice, Report, or Other Data

## NOTICE OF INTENTION TO:

TEST WATER SHUT-OFF

FRACTURE TREAT

SHOOT OR ACIDIZE

REPAIR WELL

(Other)

PULL OR ALTER CASING

MULTIPLE COMPLETE

ABANDON\*

CHANGE PLANS

X

## SUBSEQUENT REPORT OF:

WATER SHUT-OFF

FRACTURE TREATMENT

SHOOTING OR ACIDIZING

(Other)

REPAIRING WELL

ALTERING CASING

ABANDONMENT\*

(Note: Report results of multiple completion on Well Completion or Recompletion Report and Log form.)

17. DESCRIBE PROPOSED OR COMPLETED OPERATIONS (Clearly state all pertinent details, and give pertinent dates, including estimated date of starting any proposed work. If well is directionally drilled, give subsurface locations and measured and true vertical depths for all markers and zones pertinent to this work.)\*

PERRY R. BASS PROPOSES TO MOVE SUBJECT WELL WEST 100' AS CALLED FOR BY BLM AND USGS. ATTACHED IS PLAT SHOWING NEW LOCATION.

RECEIVED

NOV 28 1980

U.S. GEOLOGICAL SURVEY  
ARTESIA, NEW MEXICO

18. I hereby certify that the foregoing is true and correct

SIGNED Mike Waygood TITLE ENGINEERING ASSISTANT DATE NOVEMBER 26, 1980

(This space for Federal or State office use)

APPROVED BY (Orig. Sgd.) PETER W. CHESTER TITLE ACTING DISTRICT ENGINEER DATE DEC 8 1980

CONDITIONS OF APPROVAL, IF ANY:

NEW MEXICO OIL CONSERVATION COMMISSION  
WELL LOCATION AND ACREAGE DEDICATION PLAT

Form C-102  
Supersedes C-128  
Effective 1-1-80

All distances must be from the outer boundaries of the Section

Owner <b>PERRY R. BASS</b>			Lease <b>BIG EDDY UNIT</b>		Well No. <b>82</b>
Unit Letter <b>I</b>	Section <b>10</b>	Township <b>22 SOUTH</b>	Range <b>28 EAST</b>	County <b>EDDY</b>	

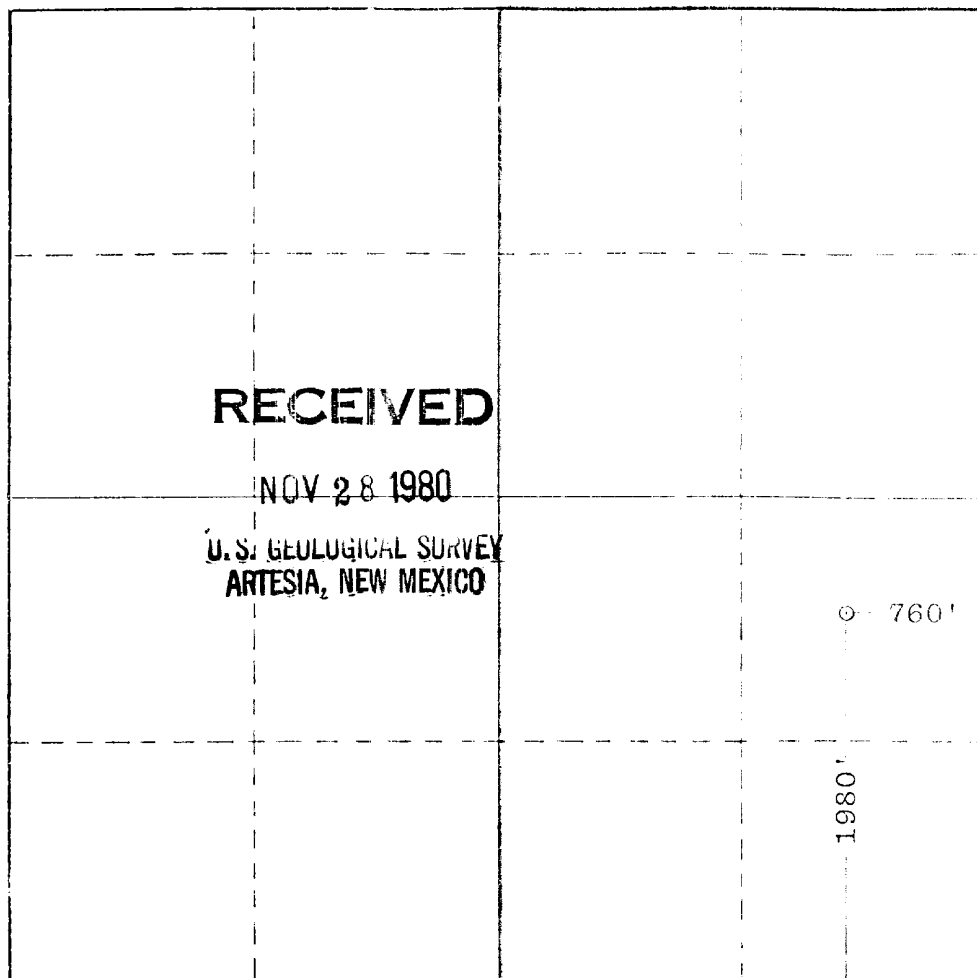
Actual Footage Location of Well:					
1980 feet from the		<b>SOUTH</b>	line and	760 feet from the	<b>EAST</b> line
Ground Level Elev. <b>3136 EST.</b>	Producing Formation <b>MORROW</b>		Pool <b>SW INDIAN FLATS MORROW</b>	Dedicated Acreage: <b>320</b> Acres	

1. Outline the acreage dedicated to the subject well by colored pencil or hashure marks on the plat below.
2. If more than one lease is dedicated to the well, outline each and identify the ownership thereof (both as to working interest and royalty).
3. If more than one lease of different ownership is dedicated to the well, have the interests of all owners been consolidated by communitization, unitization, force-pooling, etc?

☒ Yes    ☐ No    If answer is "yes," type of consolidation UNIT

If answer is "no," list the owners and their descriptions which have actually been consolidated. (Use reverse side of this form if necessary.)

No allowable will be assigned to the well until all interests have been consolidated (by communitization, unitization, forced-pooling, or otherwise) or until a non-standard unit, eliminating such interests, has been approved by the Commission.



CERTIFICATION

I hereby certify that the information contained herein is true and complete to the best of my knowledge and belief.

*Mike Waygood*

MIKE WAYGOOD

ENGINEERING ASSISTANT

PERRY R. BASS

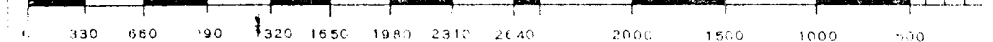
NOVEMBER 26, 1980

I hereby certify that the well location shown on this plat was plotted from field notes of actual surveys made by me or under my supervision, and that the same is true and correct to the best of my knowledge and belief.

Date Surveyed

Registered Professional Engineer  
or Noted Land Surveyor

Certificate No.



Form 2-1-7  
Supervisors 0-12  
Employees 10-6

32

100

... ..

320

- [illegible]

U. S. GEOLOGICAL SURVEY  
ARTESIA, NEW MEXICO

Mike Waygood

Mike Waygood

Engineering Assistant

Perry R. Bass

11-6-80

October 17, 1950

PATRICK A ROMERO 0007  
Doyle J E1000 0239

## DRILLING PROCEDURE

### Big Eddy Unit #82

#### Location:

1980' FSL & 660' FEL, Sec. 10, T-22-S, R-28-E

#### Conductor Casing:

40' + of 16" conductor casing will be set with a rathole machine and cemented to the surface with ready-mix.

#### Surface Hole:

A 15" O.H. will be drilled to 400' ± (T/Salt) and 11-3/4" 42#/ft H-40 casing run to total depth. The surface casing will be cemented with 290 sx Class "C" plus 2%  $\text{CaCl}_2$ . Cement must be circulated to the surface.

Total WOC time is 12 hours.

#### Nippling Up 11-3/4" Casing:

After waiting 4 hours "nippling up" procedures may begin. An 11-3/4" SW 3000# WP x 12" 3000# WP casinghead will be welded in place. A set of hydraulic operated pipe and blind rams will then be installed. (See BEPCO II attached) and tested to 1000 psi with the rig pump.

The results of this test must be reported in the daily driller's log.

#### Intermediate Hole:

An 11" O.H. will then be drilled to 2650' ± (T/Delaware Mtn. Group) 8-5/8" casing will be run to total depth and cemented with approximately 650 sx Halliburton Lite plus 18#  $\text{NaCl}$ /sx plus 1/4#/sx Floseal, plus 1%  $\text{CaCl}_2$  "tailed-in" with 350 sx Class "C" with 2%  $\text{CaCl}_2$  plus 1/4#/sx Floseal. Cement will be circulated to the surface.

Total WOC time for this casing string will be 24 hours.

#### Nippling Up 8-5/8" Casing:

After waiting 4 hours "nippling up" procedures may begin. The 11-3/4" casinghead will be removed and 8-5/8" SW 5000# WP x 10" 5000# WP casinghead installed.

A BOP stack consisting of hydril, pipe rams and blind rams will be installed as per BEPCO Drawing IV (attached.) This BOP stack will be hydrostatically tested to 5000 psi (hydril 1500#) by Yellow Jacket. The USGS will be notified in sufficient time to witness the testing of the 8-5/8" BOP stack. A copy of the test results will also be furnished to the USGS.

The results of this test will be recorded in the daily driller's log.

#### Production Hole:

A 7-7/8" O.H. will then be drilled to T.D. (12,600' ±). A PVT recorder, flow-show sensor and rotating head will be installed before drilling the Wolfcamp.

5 1/2" casing will be run to T.D. This casing string will be cemented with approx. 900 sx Class "H" plus 5#  $\text{KCl}$ /sx plus 0.3% CFR-2, plus 0.6% Halad 22. The cement volume should be sufficient to bring the cement top 1000' above the Wolfcamp.

#### Time:

This well is estimated to take 43 days from spud to T.D.



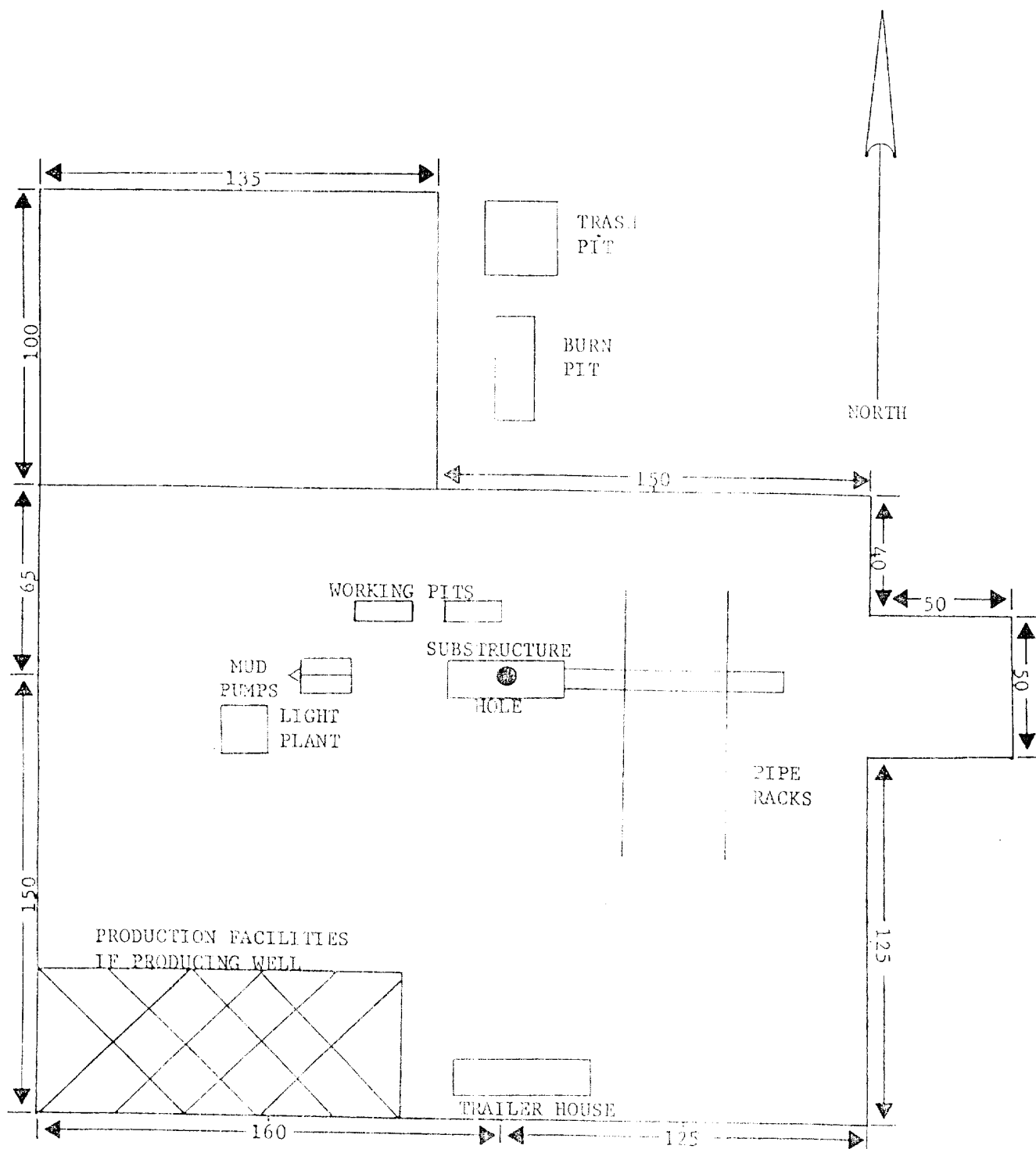
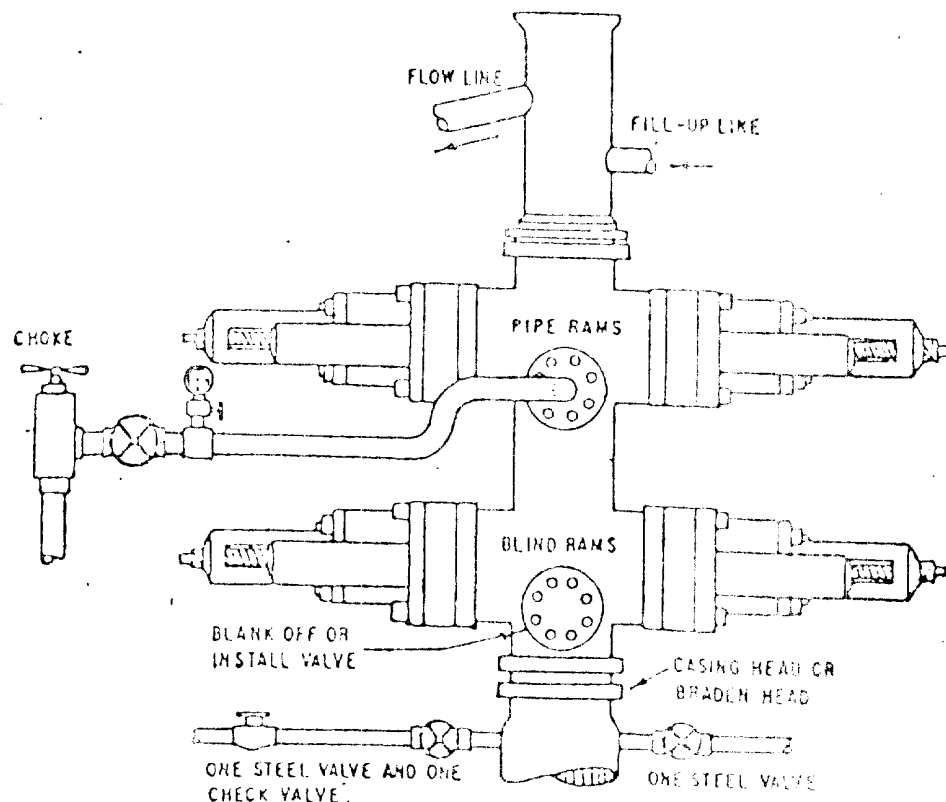


EXHIBIT "B"

## BIG EDDY UNIT # 82

## Anticipated Formation Tops

T/Salt	400'	(+2,750')
B/Salt	2,350'	(+ 300')
T/Delaware Mountain	2,650'	(+ 500')
T/Bone Springs	6,200'	(-3,050')
T/Wolfcamp	9,550'	(-6,400')
T/Strawn	10,950'	(-7,800')
T/Atoka	11,400'	(-8,250')
T/Middle Morrow	12,250'	(-9,100')
T/Lower Morrow	12,500'	(-9,350')
T/Barnett	12,700'	(-9,550')
TD	12,850'	(-9,700')



### THE FOLLOWING CONSTITUTE MINIMUM BLOWOUT PREVENTER REQUIREMENTS

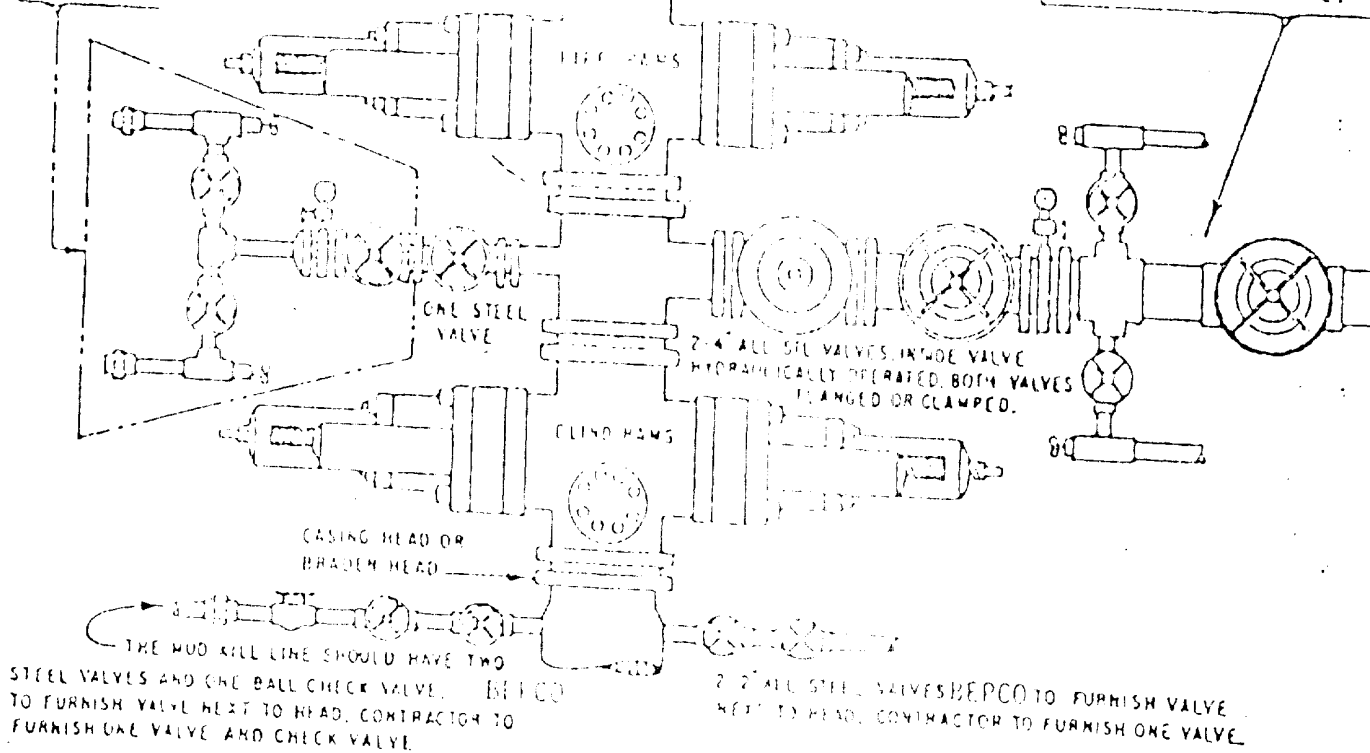
- A. ONE DOUBLE GATE BLOWOUT PREVENTER WITH LOWER RAMS BLIND AND UPPER RAMS FOR PIPE, ALL HYDRAULICALLY CONTROLLED. OPENING ON PREVENTERS BETWEEN RAMS.
- B. OPENING TO BE FLANGED, STUDDED OR CLAMPED AND AT LEAST TWO INCHES DIAMETER.
- C. ALL CONNECTIONS FROM OPERATING MANIFOLD TO PREVENTERS TO BE ALL STEEL HOSE OR TUBE A MINIMUM OF ONE INCH IN DIAMETER.
- D. THE AVAILABLE CLOSING PRESSURE SHALL BE AT LEAST 15% IN EXCESS OF THAT REQUIRED WITH SUFFICIENT VOLUME TO OPERATE THE PREVENTERS.
- E. ALL CONNECTIONS TO AND FROM PREVENTERS TO HAVE A PRESSURE RATING EQUIVALENT TO THAT OF THE B.O.P.
- F. MANUAL CONTROLS TO BE INSTALLED BEFORE DRILLING CEMENT PLUG.
- G. VALVE TO CONTROL FLOW THROUGH DRILL PIPE TO BE LOCATED ON RIG FLOOR.
- H. CHOKE MAY BE EITHER POSITIVE OR ADJUSTABLE. Choke spool may be used between rams.

REPCO II  
ONE HYDRAULIC DUAL BLOWOUT PREVENTER



ALTERNATE POSITION FOR CHOKE MANIFOLD.  
MASTER VALVES TO BE FLANGED  
OR CLAMPED.

CHOKE MANIFOLD TO HAVE A  
LEAST ONE 2" VALVE TO CONT  
EACH CHOKE AND ONE 4" VALV  
CONTROL CONTINUATION OF TH  
LINE IF LOCATED REMOTELY I  
WELL HEAD, ANOTHER MASTER  
SHOULD BE INSTALLED AT THE  
LOCATION. ONE CHOKE IS TO BE  
ABLE. THE OTHER MAY BE EIT  
ADJUSTABLE OR POSITIVE.



## THE FOLLOWING CONSTITUTE MINIMUM BLOWOUT PREVENTER REQUIREMENTS

- CONDITIONS MAY BE MET BY AN ANNULAR TYPE BLOWOUT PREVENTER ON TOP AND A CHOKE SPOOL BELOW AND EITHER
  - TWO RAM TYPE BLOWOUT PREVENTERS BELOW THE SPOOL, THE LOWER UNIT CONTAINING BLIND RAMS AND THE UPPER UNIT CONTAINING PIPE RAMS, OR
  - A DUAL BLOWOUT PREVENTER BELOW THE SPOOL WITH BLIND RAMS ON BOTTOM AND PIPE RAMS ON TOP.
- OPENING ON CHOKE SPOOL TO BE FLANGED, STUDDED OR CLAMPED.
- ALL CONNECTIONS FROM OPERATING MANIFOLDS TO PREVENTERS TO BE ALL STEEL HOSE OR TUBE A MINIMUM OF ONE INCH IN DIAMETER.
- THE AVAILABLE CLOSING PRESSURE SHALL BE AT LEAST 50% IN EXCESS OF THAT REQUIRED WITH SUFFICIENT VOLUME TO OPERATE THE
- ALL CONNECTIONS TO AND FROM PREVENTER TO HAVE A PRESSURE RATING EQUIVALENT TO THAT OF THE B.O.P.
- MANUAL CONTROLS TO BE INSTALLED BEYOND GRILLING ELEMENTS.
- KELLY COCK TO BE INSTALLED ON KELLY.
- INSIDE BLOWOUT PREVENTER TO BE AVAILABLE ON RIG FLOOR.
- DUAL OPERATING CONTROLS ONE LOCATED AT DRILLER'S POSITION AND THE OTHER LOCATED A SAFE DISTANCE FROM THE RIG FLOOR.

BEPCO 17

THREE CLOSURE HYDRAULIC BLOWOUT PREVENTERS