

**N MEXICO OIL CONSERVATION COMMISSION**  
**WELL LOCATION AND ACREAGE DEDICATION PLAT**

Form C-102  
 Supersedes C-128  
 Effective 1-1-65

All distances must be from the outer boundaries of the Section

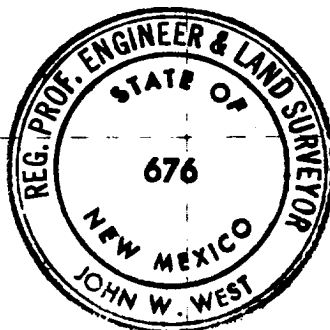
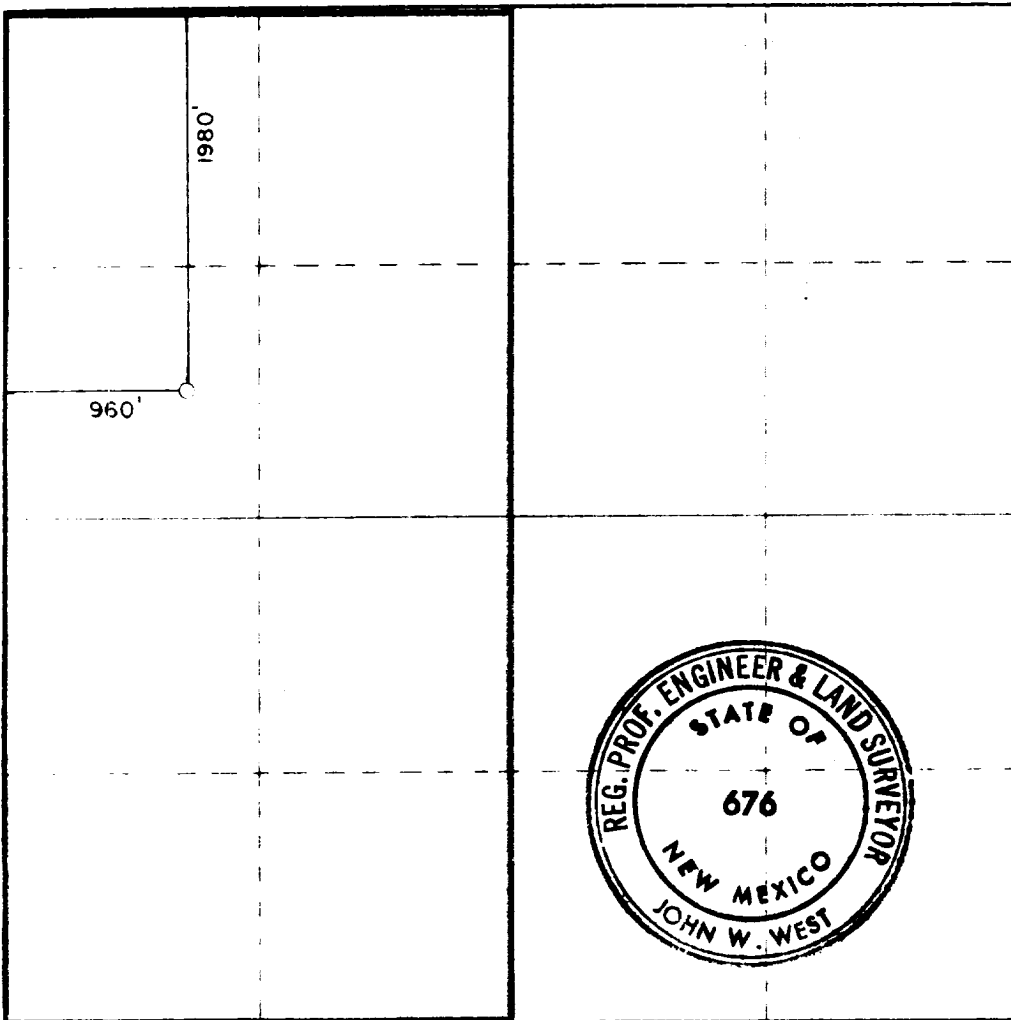
Operator <b>POGO PRODUCING CO.</b>			Lease <b>M.A.W. State</b>		Well No. <b>1</b>
Section Letter <b>E</b>	Section <b>14</b>	Township <b>24 South</b>	Range <b>27 East</b>	County <b>Eddy County, New Mexico</b>	
Actual Fracture Location of Well:					
<b>1980</b> feet from the <b>North</b> line and		<b>960</b> feet from the <b>West</b> line			
Ground Level Elev. <b>3164.8</b>	Producing Formation <b>Morrow</b>	Pool <b>Wildcat</b>		Dedicated Acreage: <b>320</b>	Acres

- 1 Outline the acreage dedicated to the subject well by colored pencil or hatchure marks on the plat below.
- 2 If more than one lease is dedicated to the well, outline each and identify the ownership thereof (both as to working interest and royalty).
3. If more than one lease of different ownership is dedicated to the well, have the interests of all owners been consolidated by communitization, unitization, force-pooling, etc?

☐ Yes ☐ No If answer is "yes," type of consolidation \_\_\_\_\_

If answer is "no," list the owners and tract descriptions which have actually been consolidated. (Use reverse side of this form if necessary.) \_\_\_\_\_

No allowable will be assigned to the well until all interests have been consolidated (by communitization, unitization, forced-pooling, or otherwise) or until a non-standard unit, eliminating such interests, has been approved by the Commission.



**CERTIFICATION**

I hereby certify that the information contained herein is true and complete to the best of my knowledge and belief

*B. J. Williams*  
 Name

**B. J. Williams**

Position

**Division Operations Manager**

Company

**Pogo Producing Company**

Date

**January 15, 1981**

I hereby certify that the well location shown on this plat was plotted from field notes of actual surveys made by me or under my supervision, and that the same is true and correct to the best of my knowledge and belief

Date

**Jan. 14, 1981**

Registered Professional Engineer

No. 676

Certificate No.	<b>JOHN W. WEST</b>	<b>676</b>
	<b>PATRICK A. ROMERO</b>	<b>6863</b>
	<b>Ronald J. Eidson</b>	<b>3239</b>

310 660 910 1320 1690 1980 2310 2640 2900 3100 3400 3600