

Submit to Appropriate
District Office
State Lease - 6 copies
Fee Lease - 5 copies

State of New Mexico
Energy, Minerals and Natural Resources Department

Form C-101
Revised 1-1-89

OIL CONSERVATION DIVISION

DISTRICT I
P.O. Box 1980, Hobbs, NM 88240

P.O. Box 2088
Santa Fe, New Mexico 87504-2088

DISTRICT II
P.O. Drawer DD, Artesia, NM 88210

DISTRICT III
1000 Rio Brazos Rd., Aztec, NM 87410

API NO. (assigned by OCD on New Wells)

5. Indicate Type of Lease

STATE ☐

FEE ☒

6. State Oil & Gas Lease No.

APPLICATION FOR PERMIT TO DRILL, DEEPEN, OR PLUG BACK

1a. Type of Work:

DRILL ☐

RE-ENTER ☐

DEEPEN ☐

PLUG BACK ☒

b. Type of Well:

OIL
WELL ☒

GAS
WELL ☐

OTHER ☐

SINGLE
ZONE ☐

MULTIPLE
ZONE ☐

7. Lease Name or Unit Agreement Name

Pardue Farms 27

2. Name of Operator

Parker & Parsley Development Company

8. Well No.

2

3. Address of Operator

P.O. Box 3178, Midland, Texas 79702-3178

9. Pool name or Wildcat

S. Culebra Bluff Und.
Bone Springs

4. Well Location

Unit Letter B : 1980 Feet From The East Line and 660 Feet From The North Line

Section 27 Township 23S Range 28E NMPM Eddy County

10. Proposed Depth

6246'

11. Formation

Brushy Canyon

12. Rotary or C.T.

W/O Unit

13. Elevations (Show whether DF, RT, GR, etc.)

3038 GR

14. Kind & Status Plug. Bond

Blanket Bond

15. Drilling Contractor

N/A

16. Approx. Date Work will start

ASAP

17.

PROPOSED CASING AND CEMENT PROGRAM

SIZE OF HOLE

SIZE OF CASING

WEIGHT PER FOOT

SETTING DEPTH

SACKS OF CEMENT

EST. TOP

It is proposed to plug back the Bone Springs and recompleate the East Loving (Delaware) Brushy Canyon.

- 1) Set CIBP @ 6246' to plug back Bone Springs perfs 6252'-7165' (83 holes).
- 2) Run CBL and perf. Brushy Canyon f/ 6045'-6240' (15 holes).
- 3) Frac using 50,000 gals XL and 150,000# 20/40 sd.
- 4) Put well on production test.

APPROVAL VALID FOR 180 DAYS
PERMIT EXPIRES 4/29/92
UNLESS DRILLING UNDERWAY

IN ABOVE SPACE DESCRIBE PROPOSED PROGRAM: IF PROPOSAL IS TO DEEPEN OR PLUG BACK, GIVE DATA ON PRESENT PRODUCTIVE ZONE AND PROPOSED NEW PRODUCTIVE ZONE. GIVE BLOWOUT PREVENTER PROGRAM, IF ANY.

I hereby certify that the information above is true and complete to the best of my knowledge and belief.

SIGNATURE

Randy R. Johnson

TITLE

Sr. Operations Engineer

DATE 10/14/91

TYPE OR PRINT NAME

Randy R. Johnson

915-683-4768
TELEPHONE NO.

(This space for State Use)

ORIGINAL SIGNED BY
MIKE WILLIAMS

APPROVED BY

SUPERVISOR, DISTRICT II

TITLE

DATE

OCT 24 1991

CONDITIONS OF APPROVAL, IF ANY:

Submit to Appropriate
District Office
State Lease - 4 copies
Fee Lease - 3 copies

State of New Mexico
Energy, Minerals and Natural Resources Department

Form C-102
Revised 1-1-89

OIL CONSERVATION DIVISION

P.O. Box 2088
Santa Fe, New Mexico 87504-2088

DISTRICT I

P.O. Box 1980, Hobbs, NM 88240

DISTRICT II

P.O. Drawer DD, Artesia, NM 88210

DISTRICT III

1000 Rio Brazos Rd., Aztec, NM 87410

WELL LOCATION AND ACREAGE DEDICATION PLAT

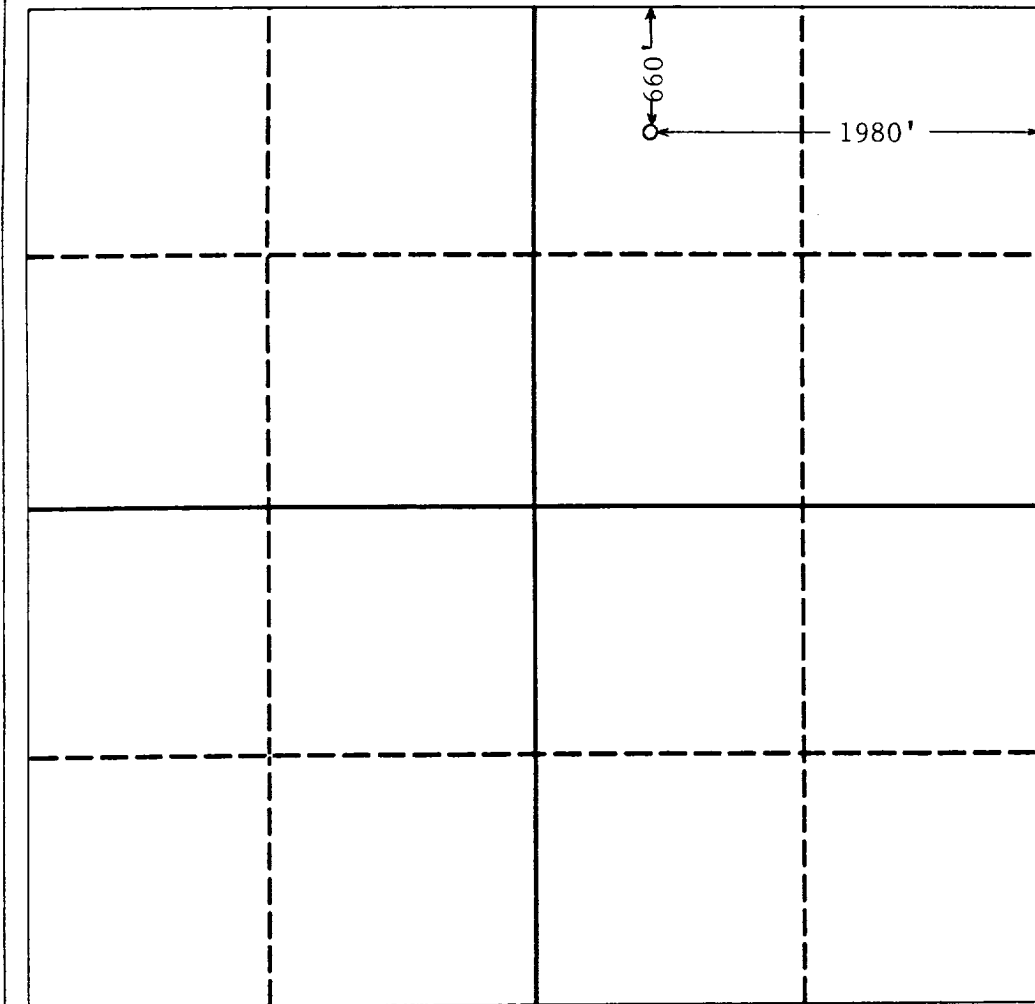
All Distances must be from the outer boundaries of the section

Operator Parker & Parsley Development Company			Lease Pardue Farms 27		Well No. 2
Unit Letter B	Section 27	Township 23 South	Range 28 East	County NMPM	Eddy

Actual Footage Location of Well:

660 feet from the North line and 1980 feet from the East line			
Ground level Elev. 3037.7	Producing Formation Brushy Canyon	Pool East Loving (Delaware)	Dedicated Acreage: 40 Acres

1. Outline the acreage dedicated to the subject well by colored pencil or hatchure marks on the plat below.
2. If more than one lease is dedicated to the well, outline each and identify the ownership thereof (both as to working interest and royalty).
3. If more than one lease of different ownership is dedicated to the well, have the interest of all owners been consolidated by communitization, unitization, force-pooling, etc?
☒ Yes ☐ No If answer is "yes" type of consolidation Operating Agreement
If answer is "no" list the owners and tract descriptions which have actually been consolidated. (Use reverse side of this form if necessary).
No allowable will be assigned to the well until all interests have been consolidated (by communitization, unitization, forced-pooling, or otherwise) or until a non-standard unit, eliminating such interest, has been approved by the Division.



OPERATOR CERTIFICATION

I hereby certify that the information contained herein is true and complete to the best of my knowledge and belief.

Signature <i>Randy R. Johnson</i>
Printed Name Randy R. Johnson
Position Sr. Operations Engineer
Company Parker & Parsley Dev. Co.
Date October 14, 1991

SURVEYOR CERTIFICATION

I hereby certify that the well location shown on this plat was plotted from field notes of actual surveys made by me or under my supervision, and that the same is true and correct to the best of my knowledge and belief.

Date Surveyed
Signature & Seal of Professional Surveyor
Certificate No.

**MEXICO OIL CONSERVATION COMMISSION
WELL LOCATION AND ACREAGE DEDICATION PLAT**

Form
Superintendent of
Oil and Gas

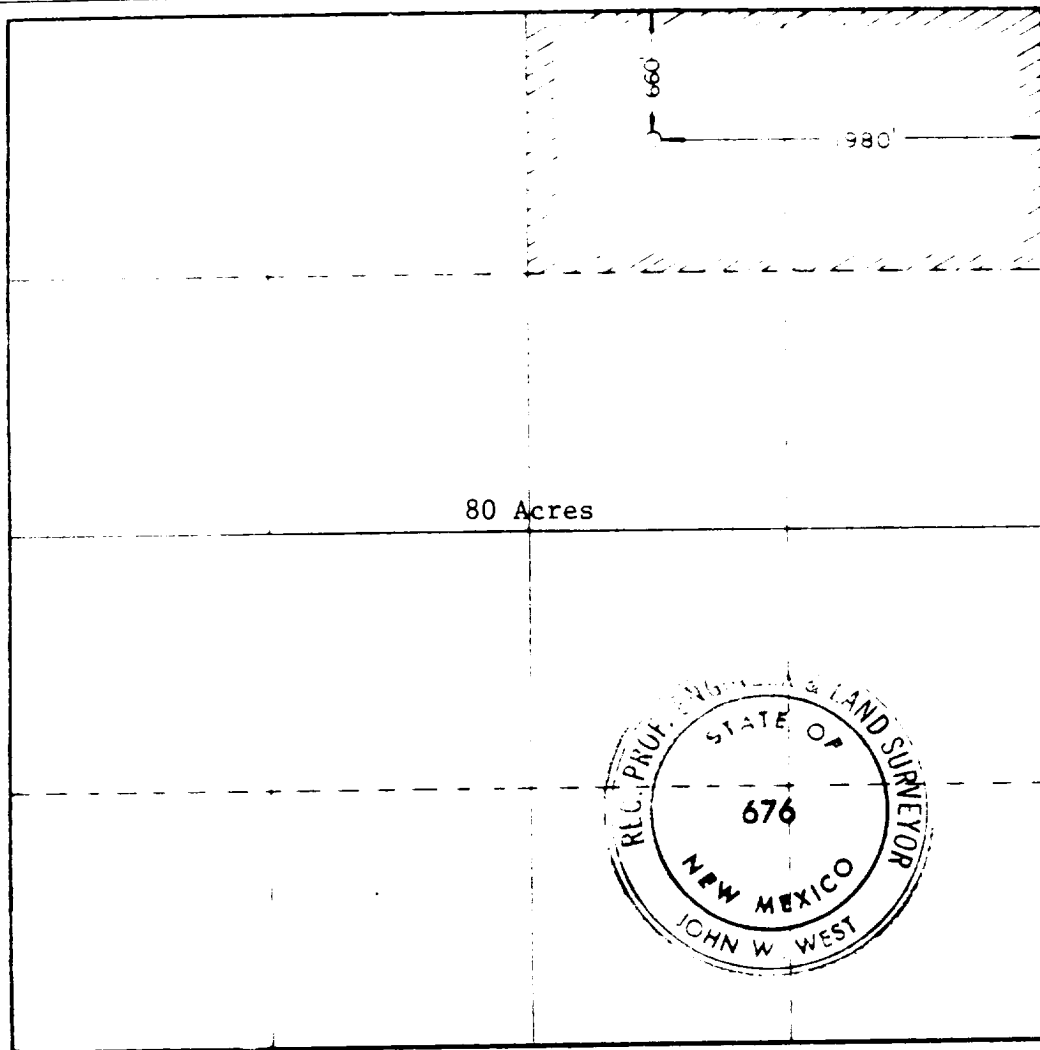
All distances must be from the outer boundaries of the Section.

MADDOX ENERGY CORP.		LEASE		PARDUE FARMS 27	
27		23 SOUTH		28 EAST	
NORTH		1980		EAST	
3037.7		BONE SPRINGS		SOUTH CULEBRA BLUFF BONE SPRINGS	

1. Indicate the acreage dedicated to the subject well by colored pencil or hatchure marks on the plat below.
2. If more than one lease is dedicated to the well, outline each and identify the ownership thereon to as to working interest and royalty. See attached descriptions.
3. If more than one lease of different ownership is dedicated to the well, have the interests of all owners pooled or unitized by communitization, unitization, force-pooling, etc?
- or unitized
- X Yes ☐ No If answer is "yes," type of consolidation Designation of pooled area

If answer is "no," list the owners and tract descriptions which have actually been consolidated. Use reverse side of this form if necessary.

No allowable will be assigned to the well until all interests have been consolidated (by communitization, unitization, force-pooling, or otherwise) or until a non-standard unit, eliminating such interests, has been approved by the Commission.



CERTIFICATION

I hereby certify that the information contained herein is true and complete to the best of my knowledge and belief.

Patrick A. Gerrard

MANAGER LAND DEPT.

MADDOX ENERGY CORP.

3-17-1981

I hereby certify that the well location shown on this plat was plotted from field notes of actual surveys made by me or under my supervision and that the same is true and correct to the best of my knowledge and belief.

Date Surveyed: 3-16-81

Registered Professional Engineer
in the State of New Mexico

John W. West
Certificate No. **JOHN W. WEST 676**
PATRICK A. ROMERO 6863
Ronald J. Edison 3239

Attachment to Form C-102

Maddox Energy Corporation
 Pardue Farms 27 Well No. 2
 Eddy County, New Mexico

<u>Tract No.</u>	<u>Royalty Owners</u>	<u>Acreage</u>	<u>Working Interest Owners</u>
1	Pardue Farms, New Mexico Limited Partnership Earl B. Guitar, et al	SW/4 NW/4 NE/4 and W/2 SE/4 NW/4 NE/4 S/2 NE/4 NE/4	Maddox Energy Corp., et al
2	Billie M. Queen	All that part of the NE/4 NE/4 NE/4 lying east of the Carlsbad Irrigation Dist. ditch	Maddox Energy Corp, et al
3	Esther C. Feaster	NW/4 NW/4 NE/4	Aminoil U.S.A., Inc.
4	Sabino Martinez ($\frac{1}{2}$ interest leased) ($\frac{1}{2}$ interest unleased)	E/2 E/2 NE/4 NE/4 NE/4 less Tract 2	Maddox Energy Corp, et al
5	Lorenzo G. Trevino et ux	W/2 E/2 NW/4 NE/4 NE/4	John P. Bates
6	Clara V. Acosta	E/2 E/2 NW/4 NE/4 NE/4, W 3/4 NE/4 NE/4 NE/4	Maddox Energy Corp, et al 1/ P. M. Whitsitt 1/2
7	Brigido W. Rodriguez	E/2 W/2 NW/4 NE/4 NE/4	Maddox Energy Corp, et al
8	Mrs. Guadalupe Hernadez	W/2 W/2 NW/4 NE/4 NE/4	John P. Bates
9	Jose L. Hernandez, Jr.	E/2 W/2 NE/4 NW/4 NE/4	Maddox Energy Corp, et al
10	Dulia G. Archibegue	W/2 W/2 NE/4 NW/4 NE/4	Maddox Energy Corp, et al
11	Tomas Rojas, et al	E/2 E/2 NE/4 NW/4 NE/4	Maddox Energy Corp, et al
12	Earl B Guitar, et al ($\frac{1}{2}$ interest leased)	W/2 E/2 NE/4 NW/4 NE/4, E/2 SE/4 NW/4 NE/4	Maddox Energy Corp, et al
13	$\frac{1}{2}$ Interest Unleased	Same as Tract 12	Earl B. Guitar, et al