

3000# W.P. TWO-RAM COP

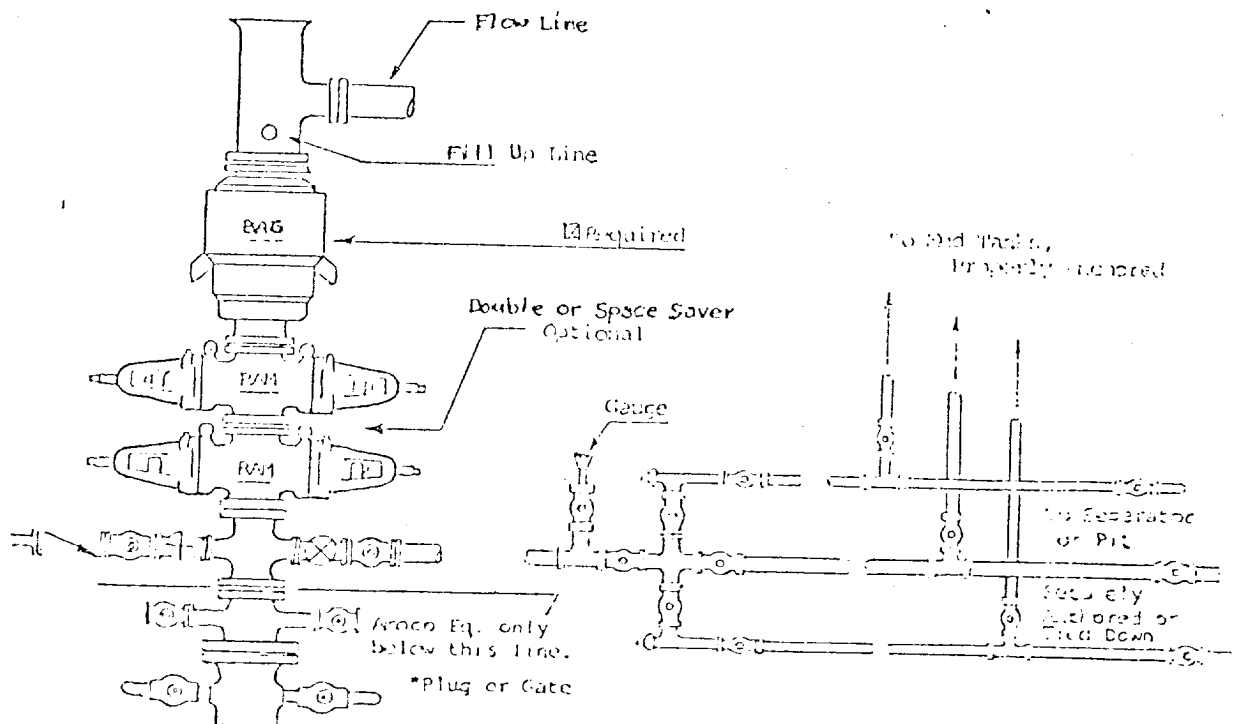
1. BOP'S TO BE FLUID OPERATED.
2. BOP'S AND ALL FITTINGS MUST BE IN GOOD CONDITION AND RATED AT 3000 PSI W.P. MINIMUM.
3. EQUIPMENT THROUGH WHICH BIT MUST PASS SHALL BE AT LEAST AS LARGE AS CASING SIZE BEING DRILLED THROUGH.
4. NIPPLE ABOVE BOP'S SHALL BE SAME SIZE AS LAST CASING SET.
5. UPPER KELLY COCK IS REQUIRED AND SHALL BE 3000# W.P. MINIMUM.
6. T. I. W. OR COMPARABLE SAFETY VALVE SHALL BE AVAILABLE ON RIG FLOOR WITH CONNECTION OR SUBS TO FIT ANY TOOL JOINT IN THE STRING. VALVE TO BE FLOW BORE 5000# MIN.
7. VALVE NEXT TO SPOOL SHALL BE 4". OTHER EQUIPMENT MAY BE 3" OR 4". ALL CHOKE MANIFOLD EQUIPMENT SHALL BE FLANGED. FLOW LINE FROM MANIFOLD TO BE MINIMUM OF 3" AND STRAIGHT AS POSSIBLE WITH MINIMUM BENDS.
8. FLUID LINES FROM ACCUMULATOR TO BOP'S AND ALL REMOTE CONTROL FLUID LINES SHALL BE STEEL, AND RATED AT OR ABOVE MAXIMUM ACCUMULATOR PRESSURE. LINES SHALL BE ROUTED IN BUNDLES AND ADEQUATELY PROTECTED FROM DAMAGE.
9. USE RAMS IN FOLLOWING POSITIONS:\*

	<u>DRILLING</u>	<u>RUNNING CASING</u>
UPPER RAM	DRILL PIPE	CASING
LOWER RAM	BLIND	BLIND

\*AMOCO AREA SUPT. MAY REVERSE LOCATION OF RAMS.

10. CHOKE MANIFOLD, BEYOND SECOND VALVE FROM CROSS MAY BE OPTIONALLY POSITIONED OUTSIDE OF SUBSTRUCTURE.
11. EXTENSIONS AND HAND WHEELS TO BE INSTALLED AND BRACED AT ALL TIMES.
12. TWO INCH (2") LINES AND VALVES ARE PERMITTED ON THE KILL LINE.

NOTE: ALL UNMARKED VALVES MAY BE  
PLUG OR GATE VALVE, METAL  
TO METAL SEAL.



Amoco Production Co.

Attachment to "Application for Permit to Drill", Form 9-331 C

Federal BL Well No. 1  
300' FNL & 2600' FEL  
Section 17, T-23-S, R-24-E  
Eddy County, New Mexico

1. Location

See attached Form C-102

2. Elevation

See attached Form C-102

3. Geologic name of surface formation.

Guadalupian

4. Type of drilling tools and associated equipment to be utilized.

See Form 9-331 C

5. Proposed drilling depth.

See Form 9-331 C

6. Estimated tops of important geologic markers.

Delaware	1548'	Strawn	8972'	L. Morrow	10687'
Bone Springs	2372'	Atoka	9907'	Barnett	10850'
Wolfcamp	7852'	M. Morrow	10517'		

7. Estimated depths at which anticipated water, oil, gas or other mineral-bearing formations are expected to be encountered.

Wolfcamp	7852'	Atoka	9907'	L. Morrow	10687'
Strawn	8972'	M. Morrow	10517'		

8. Proposed casing program, including size, grade, and weight of each string and whether it is new or used.

<u>Depth</u>	<u>Size</u>	<u>Weight</u>	<u>Grade</u>	<u>New or Used</u>
400'	13-3/8"	48#	H-40	New
2500'	9-5/8"	36#	K-55	New
10900'	5-1/2"	17#, 20#	N-80	New

9. Proposed cementing program.

13-3/8" Circulate to surface  
9-5/8" Circulate to surface  
5-1/2" Cement to 500' above

10. Blowout Preventer Program is attached.
11. Type and characteristics of the proposed circulating medium or mediums to be employed for rotary drilling, and the quantities and types of mud and weighting material to be maintained.
- Mud Program: 0'-400' Native mud and fresh water  
400'-2500' Native mud and brine  
2500'-TD Commercial mud and brine with minimum properties for safe hole conditions. Will raise viscosity and reduce water loss prior to Morrow penetration.
12. Testing, logging and coring programs to be followed with provisions made for required flexibility.
- Compensated neutron formation density  
Dual laterolog/micro SFL
13. Any anticipated abnormal pressure or temperatures expected to be encountered or potential hazards, such as hydrogen sulfide gas, along with plans for mitigating such hazards.
- None anticipated
14. Anticipated starting date and duration of operation.
- 5-15-81 6-20-81
15. Other facets of the proposed operation operator wishes to point out for the Geological Survey's consideration of the application.
- Request exemptions from the painting stipulations of Sec. 102 (a) (8) of the "Federal Land Policy and Management Act of 1976" to paint any tanks, separators, and treaters required for the production of this well, Amoco's standard gray color. If a pumping unit is required for the continued production of this well, it will be painted black with orange safety color coding which conforms with your current painting guidelines.

Amoco Production Company  
Proposed Development Plan for Surface Use

Federal BL Well No. 1  
300' FNL & 2600' FEL  
Section 17, T-23-S, R-24-E  
Eddy County, New Mexico

1. Existing roads including location of exit from main highway.

Detailed map showing drillsite location in relation to the nearest town and all existing roads within one mile of the wellsite are shown on Exhibit A.

See traffic sketch attached to Exhibit B.

2. Planned access roads.

1.5 miles of access road will be built (see traffic sketch)

3. Location of existing wells.

All existing well within one mile radius are shown on Exhibit C.

4. Location of tank batteries and flow lines

If the well is commercially productive, the production facilities (i.e. tanks, separators, & treaters) will be located on existing pad.

5. Location and type of water supply.

Fresh & brine water to be hauled by commercial hauler.

6. Source of construction materials.

Caliche will be obtained from a pit located in NE/4, NE/4,  
Section 19, T-23-S, R-24-E, Eddy County, NM.

7. WASTE DISPOSAL

- a. Drill cuttings will be disposed of in the reserve pit.
- b. Drilling fluids will be allowed to evaporate in the reserve pit until the pit is dry.

- c. Trash, waste paper, garbage and junk will be burned or buried with a minimum of 24" cover. Waste material will be contained to prevent scattering by wind prior to ultimate disposal.
- d. Any produced water will be contained in tanks and be disposed of in an approved manner. Oil produced will be stored in tanks until sold, at which time it will be hauled from location.
- e. Current laws and regulations pertaining to disposal of human waste will be complied with.
- f. If productive, maintenance waste will be placed in special containers and buried or hauled away periodically.

#### 8. ANCILLARY FACILITIES-

No camps, airstrips, etc. will be constructed.

#### 9. WELLSITE LAYOUT-

- a. Size of Drilling Pad - 350' x 275' x 6"
- b. Compacted - Caliche
- c. Surfaced - No
- d. 725' X 550' area around wellsite has been cleared by archaeologist.
- e. See Exhibit "D".

#### 10. RESTORATION OF SURFACE-

Producing Well - all pits will be cut, filled, and leveled as soon as practical to original condition with rehabilitation to commence following removal of drilling and completion equipment. Rehabilitation to be completed in 180 days if possible.

Dry Hole - same as above with dry hole marker to be installed and surface reseeded if required.

#### 11. OTHER INFORMATION-

- a. Terrain - Hilly
- b. Soil- Silty clay loam
- c. Vegetation- Yucca, allthorn, cane cholla, flour wing, saltbush, mesquite, purple
- d. Surface Use- Grazing pricklypear, soaptree yucca, ring muhly,
- e. Ponds and Streams - None broom snakeweed, juniper
- f. Water Wells - None
- g. Residences and Building - None
- h. Arroyos, Canyons, etc. - Located northeast of Last Chance Canyon
- i. Well Sign - Posted at drill site
- j. Open Pits - All pits containing liquid or mud will be fenced
- k. Archaeological Resources - None found

12. OPERATOR'S REPRESENTATIVE -

Field personnel responsible for compliance with development plan for surface use is:

J. H. Hankins, Drilling Supervisor  
P. O. Box 68  
Hobbs, NM 88240  
Office Phone: (505) 393-2167

LEASE & WELL NUMBER NM-0560247 Federal BL No. 1

LOCATION 330' FNL & 2600' FEL, Section 17, T-23-S, R-24-E

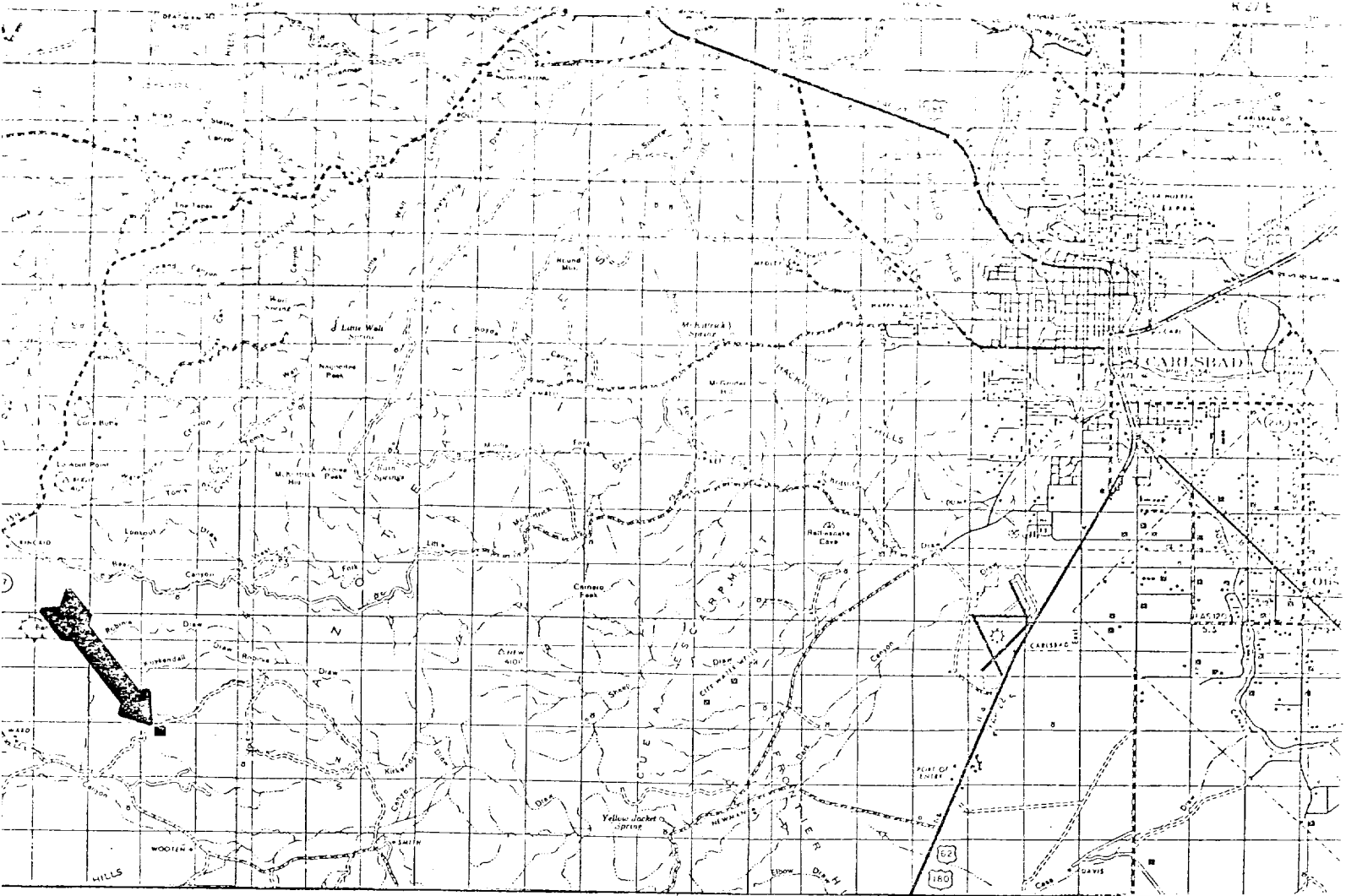
Certification: The following statement is to be incorporated in the plan and must be signed by the lessee's or operator's field representative who is identified in Item No. 12 of the plan.

I hereby certify that I, or persons under my direct supervision have inspected the proposed drillsite and access route; that I am familiar with the conditions which presently exist; that the statements made in this plan are, to the best of my knowledge, true and correct; and, that the work associated with the operations proposed herein will be performed by AMOCO PRODUCTION COMPANY and its contractors and subcontractors in conformity with this plan and the terms and conditions under which it is approved.

May 1, 1981

DATE

J. H. Hawkins Drilling Supervisor  
NAME AND TITLE

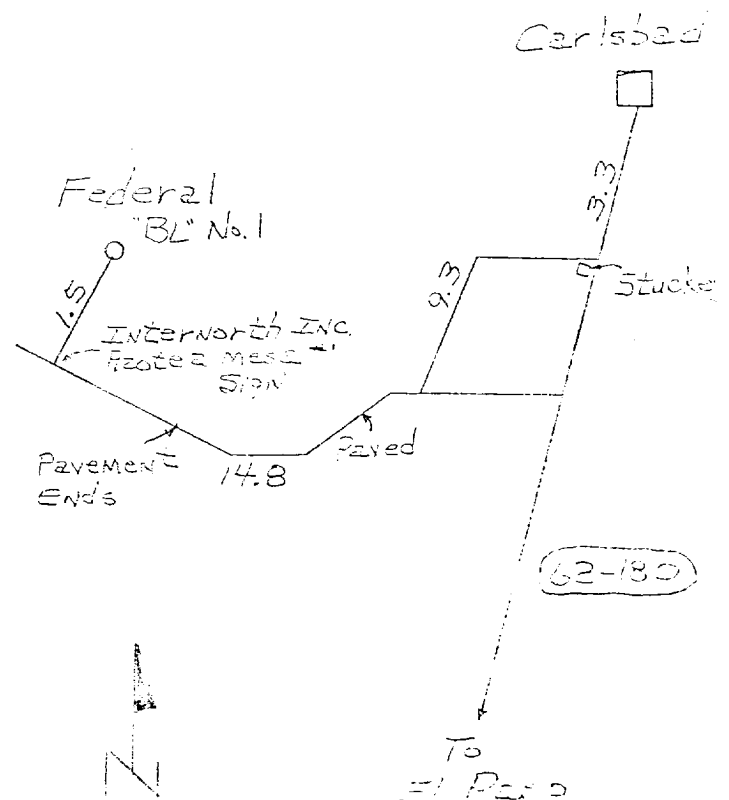


# TRAFFIC SKETCH

Federal "BL" No.1 AMOCO 48.93617%  
 Sec. 17, T23S, R24E, 1980 FWL & 660 FNL  
 Eddy Co., NM  
 Motor Freight Carlsbad, NM  
 Rail Carlsbad, NM

## Nearest Product Point

Cement Artesia, NM  
 Mud Artesia, NM





550'

BLOWDOWN PIT  
10' x 40'

CELLAR 8 x 8 x 8

175'

140'

PITS

100'

200'

175'

275'

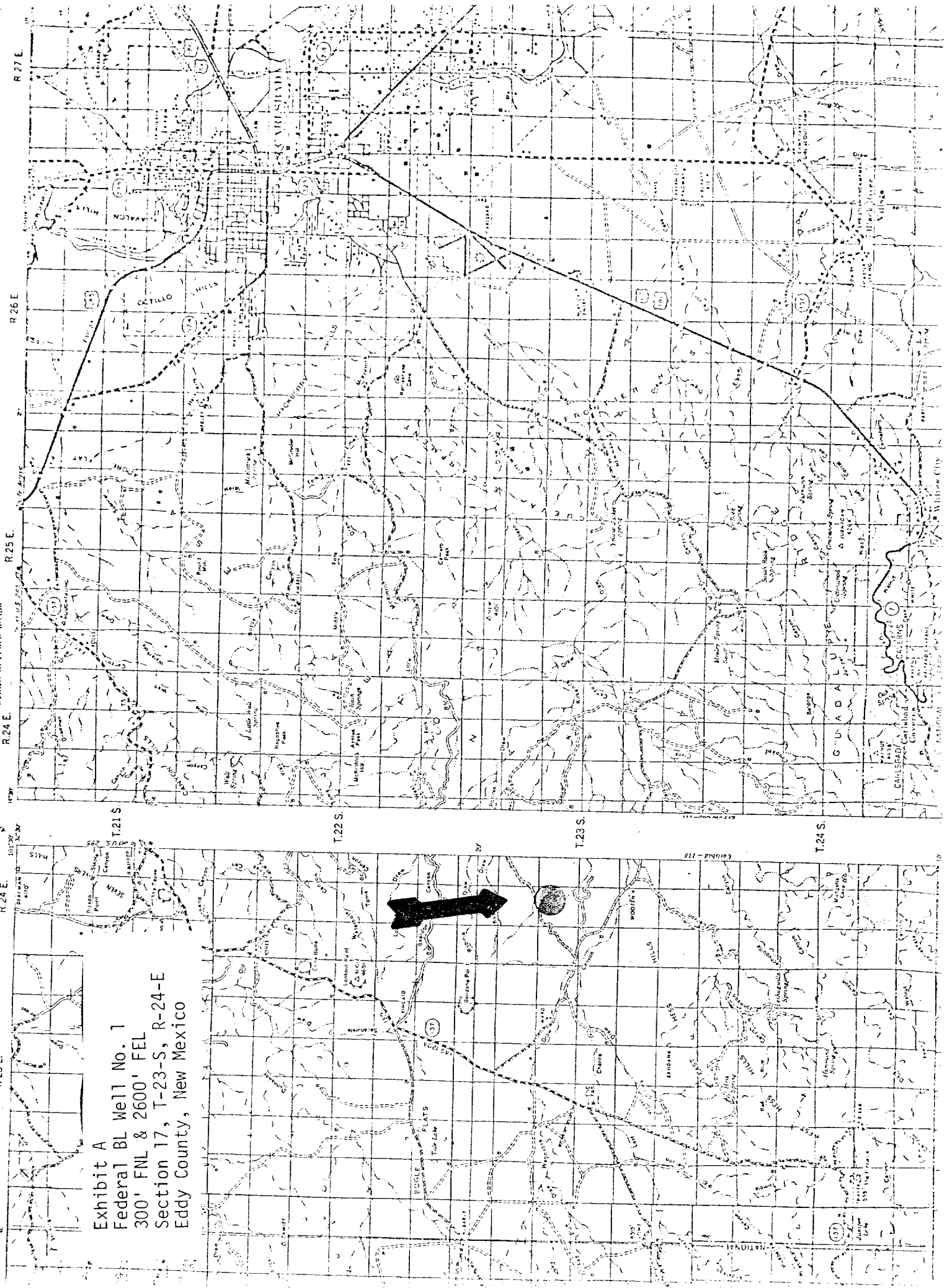
350'

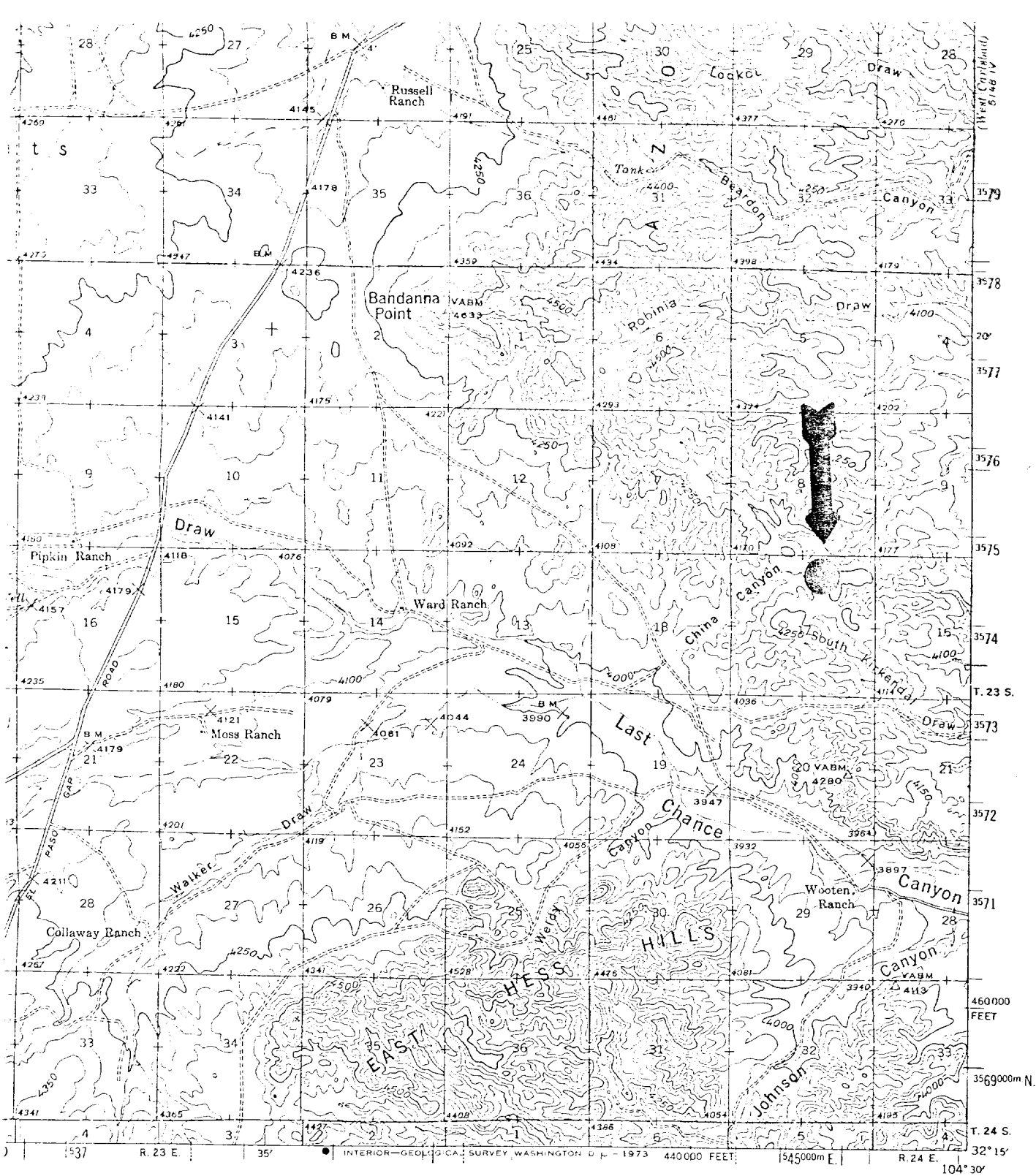
15' WIDE ROAD

100'

Exhibit D  
Federal BL Well No. 1  
300' FNL & 2600' FEL  
Section 17, T-23-S, R-24-E  
Eddy County, New Mexico

Exhibit A  
Federal BL Well No. 1  
300' FNL & 2600' FEL  
Section 17, T-23-S, R-24-E  
Eddy County, New Mexico





BANDANNA POINT, N. MEX.  
 N3215-W10430/15

1940

AMS 5048 I-SERIES V781

Exhibit B  
 Federal BL Well No. 1  
 300' FNL & 2600' FEL  
 Section 17, T-23-S, R-24-E  
 Eddy County, New Mexico

NOY STANDARDS  
 80225 OR WASHINGTON, D. C. 20242  
 S IS AVAILABLE ON REQUEST



STATE OF NEW MEXICO  
ENERGY AND MINERALS DEPARTMENT  
OIL CONSERVATION DIVISION

April 29, 1981

BRUCE KING  
GOVERNOR

LARRY KEHOE  
SECRETARY

POST OFFICE BOX 2088  
STATE LAND OFFICE BUILDING  
SANTA FE, NEW MEXICO 87501  
(505) 827-2434

RECEIVED

MAY 5 1981

O. C. D.  
ARTESIA, OFFICE

Amoco Production Company  
P. O. Box 68  
Hobbs, New Mexico 88240

Attention: Mr. S. J. Okerson

Administrative Order NSL-1359

Gentlemen:

Reference is made to your application for approval of a non-standard location for your Federal "BL" Well No. 1 to be located 300 feet from the North line and 2600 feet from the East line of Section 17, Township 23 South, Range 24 East, NMPM, a Morrow wildcat, Eddy County, New Mexico.

By authority granted me under the provisions of Rule 104 F of the Division Rules and Regulations, the above-described unorthodox location is hereby approved.

Sincerely,

JOE D. RAMEY,  
Director

JDR/RLS/dr

cc: Oil Conservation Division - Artesia  
Oil & Gas Engineering Committee - Hobbs  
U. S. Geological Survey - Artesia