

**MEXICO OIL CONSERVATION COMMISSION
WELL LOCATION AND ACREAGE DEDICATION PLAT**

Form 17-102
Supersedes C-128
Effective 1-1-85

All distances must be from the outer boundaries of the Section

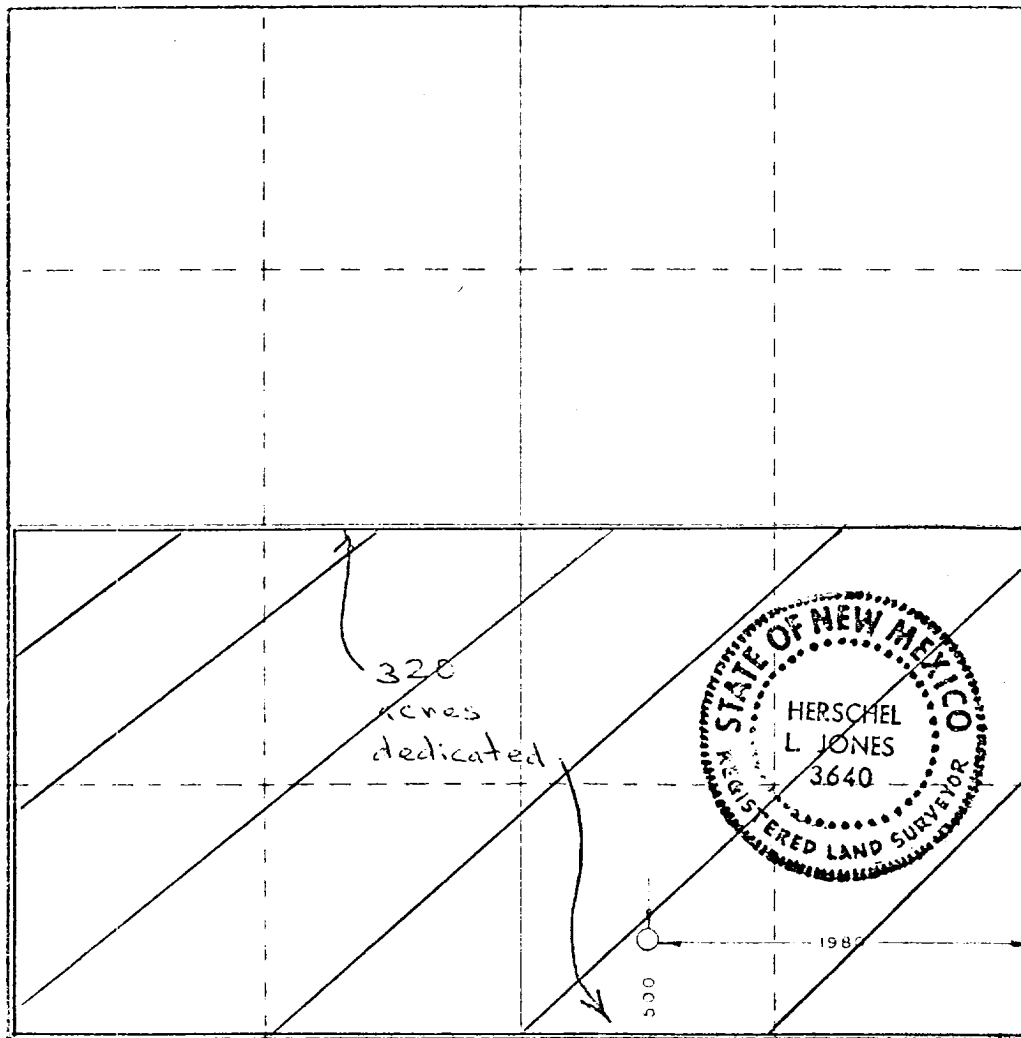
| | | | | | |
|--------------------------------------|--------------------------------------|---------------------------------------|---------------------------------|---------------------------|----------------------|
| Operator HUSKY OIL COMPANY | | | Lease Calvani | | Well No. 1 |
| Section "0" | Section 29 | Township 22 South | Range 27 East | County Eddy | |
| Actual Field Location of Well | | | | | |
| 500 | feet from the South | line and | 1980 | feet from the East | line |
| Ground Level Elev. 3151.0 | Producing Formation Morrow | Pool South Carlshed, Morrow | Estimated Acreage 320 | | |

1. Outline the acreage dedicated to the subject well by colored pencil or hatchure marks on the plat below.
2. If more than one lease is dedicated to the well, outline each and identify the ownership thereof (both as to working interest and royalty). *Will be sent to Santa Fe office with the application for an unorthodox location.*
3. If more than one lease of different ownership is dedicated to the well, have the interests of all owners been consolidated by communitization, unitization, force-pooling, etc?

☒ Yes ☐ No If answer is "yes," type of consolidation _____

If answer is "no," list the owners and tract descriptions which have actually been consolidated. (Use reverse side of this form if necessary.) _____

No allowable will be assigned to the well until all interests have been consolidated (by communitization, unitization, forced-pooling, or otherwise) or until a non-standard unit, eliminating such interests, has been approved by the Commission.



CERTIFICATION

I hereby certify that the information contained herein is true and complete to the best of my knowledge and belief.

James E. Yates
Drilling Engineer

Husky Oil Company
of Delaware

5/6/81

I hereby certify that the well location shown on this plat was plotted from field notes of actual surveys made by me or under my supervision, and that the same is true and correct to the best of my knowledge and belief.

Date Surveyed:

March 5, 1981

Registered Professional Engineer
and Land Surveyor

Herschel L. Jones
3640

