

NO. OF COPIES RECEIVED	
DISTRIBUTION	
ANTA FE	1
FILE	1
U.S.G.S.	1
LAND OFFICE	1
OPERATOR	1

NEW MEXICO OIL CONSERVATION COMMISSION

RECEIVED

30-015-23830
Revised 1-1-65

JUN 18 1981

O. C. D.

ARTESIA OFFICE

5A. Indicate Type of Lease

STATE ☒

FEE ☐

5. State Oil & Gas Lease No.

L-6425

APPLICATION FOR PERMIT TO DRILL, DEEPEN, OR PLUG BACK

Type of Work

DRILL ☒

DEEPEN ☐

PLUG BACK ☐

Type of Well

OIL WELL ☒

GAS WELL ☐

OTHER ☐

SINGLE ZONE ☐

MULTIPLE ZONE ☐

Name of Operator

HCW Exploration, Inc. ✓

Address of Operator

P.O. Box 10585, Midland, Texas 79702

Location of Well

UNIT LETTER N LOCATED 860 FEET FROM THE South LINE

1980 FEET FROM THE West LINE OF SEC. 30 TWP. 24-S RCE. 29-E NMPM

7. Unit Agreement Name

8. Farm or Lease Name

MWJ STATE

9. Well No.

1

10. Field and Pool, or Wildcat

Undesignated (Bone Spr)

12. County

Eddy

19. Proposed Depth

8200'

19A. Formation

Bone Springs

20. Rotary or Non-Rotary

Rotary

Elevations (Show whether DF, RT, etc.)

2926.6 GR

21A. Kind & Status Plug. Bond

Blanket

21B. Drilling Contractor

Tri-Service Drlg Co.

22. Approx. Date Work will start

June 20, 1981

PROPOSED CASING AND CEMENT PROGRAM

SIZE OF HOLE	SIZE OF CASING	WEIGHT PER FOOT	SETTING DEPTH	SACKS OF CEMENT	EST. TOP
17"	12 3/4-13 3/8"	38# - 48#	400+	400 sx	circ to surface
12 1/4"	8 5/8"	24# - 28#	2500+	1100 sx	circ to surface
7 7/8"	4 1/2"	10.5#	7000'	400 sx	5000'

Drill 17" hole to 400'+. Set & cmt 13 3/8" csg at 400' w/400 sx, circ to surface. WOC 18 hrs. Drill 12 1/4" hole to 2500'+. Set 8 5/8" csg at 2500', cmt to surface w/approx. 1100 sx. WOC 18 hrs. Drill 7 7/8" hole to +8200'. Run logs. If production is indicated, run 4 1/2" csg to TD and cmt w/approx. 400 sx.

APPROVED FOR 180 DAYS
PERMIT EXPIRES 12-19-81
UNLESS DRILLING UNDERWAY

OVER SPACE DESCRIBE PROPOSED PROGRAM: IF PROPOSAL IS TO DEEPEN OR PLUG BACK, GIVE DATA ON PRESENT PRODUCTIVE ZONE AND PROPOSED NEW PRODUCTION. GIVE BLOWOUT PREVENTER PROGRAM, IF ANY.

I hereby certify that the information above is true and complete to the best of my knowledge and belief.

D. C. Helm Title Vice President

Date June 12, 1981

(This space for State Use)

APPROVED BY Mike Williams TITLE OIL AND GAS INSPECTION

DATE JUN 19 1981

REASONS OF APPROVAL, IF ANY:

NEW MEXICO OIL CONSERVATION COMMISSION
WELL LOCATION AND ACREAGE DEDICATION PLAT

Form C-102
Supersedes C-128
Effective 1-1-65

All distances must be from the outer boundaries of the Section.

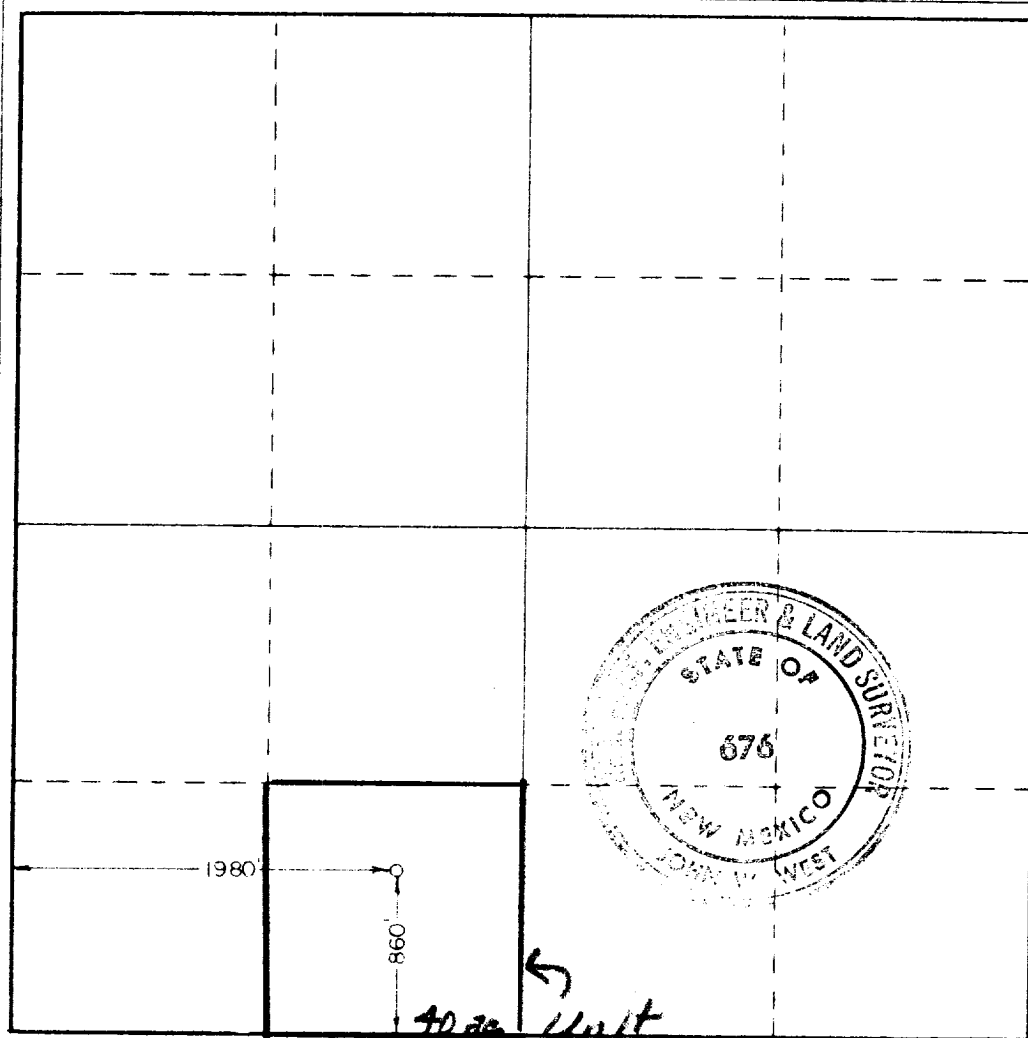
Operator HCW Exploration, Inc.		Lease MWJ State		Well No. 1
Tract Letter N	Section 30	Township 24 South	Range 29 East	County Eddy
Actual Footage Location of Well: 860 feet from the south line and 1980 feet from the west line				
Ground Level Elev. 2926.6	Producing Formation Bone Springs	Pool Undesignated Wildcat	Dedicated Acreage 40 Acres	

1. Outline the acreage dedicated to the subject well by colored pencil or hatchure marks on the plat below.
2. If more than one lease is dedicated to the well, outline each and identify the ownership thereof (both as to working interest and royalty).
3. If more than one lease of different ownership is dedicated to the well, have the interests of all owners been consolidated by communitization, unitization, force-pooling, etc?

☐ Yes ☐ No If answer is "yes," type of consolidation _____

If answer is "no," list the owners and tract descriptions which have actually been consolidated. (Use reverse side of this form if necessary.) _____

No allowable will be assigned to the well until all interests have been consolidated (by communitization, unitization, forced-pooling, or otherwise) or until a non-standard unit, eliminating such interests, has been approved by the Commission.



CERTIFICATION

I hereby certify that the information contained herein is true and complete to the best of my knowledge and belief.

Name D. C. Helm
Position Vice President
Company HCW Exploration, Inc.
Date June 12, 1981

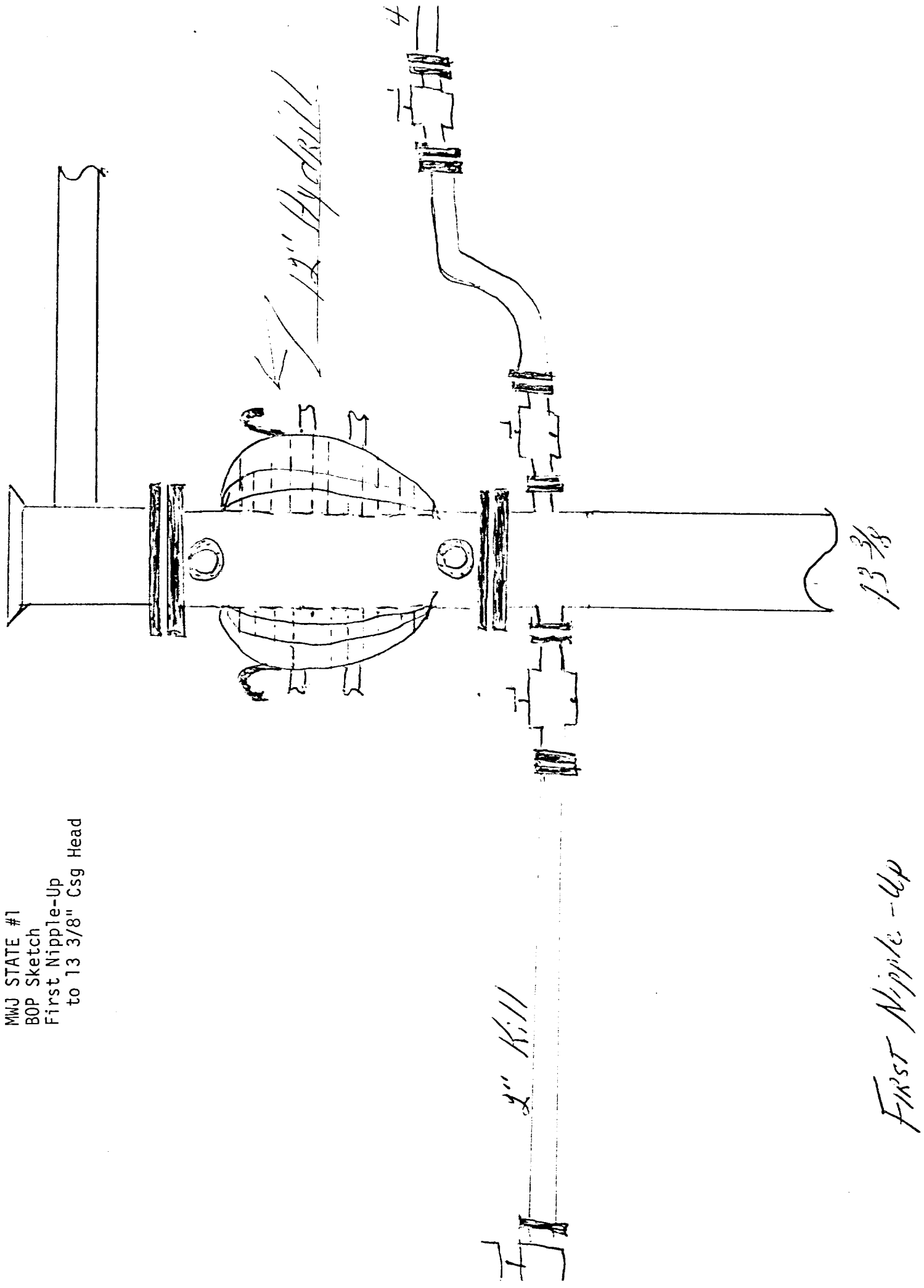
I hereby certify that the well location shown on this plat was plotted from field notes of actual surveys made by me or under my supervision, and that the same is true and correct to the best of my knowledge and belief.

Date Surveyed June 4, 1981

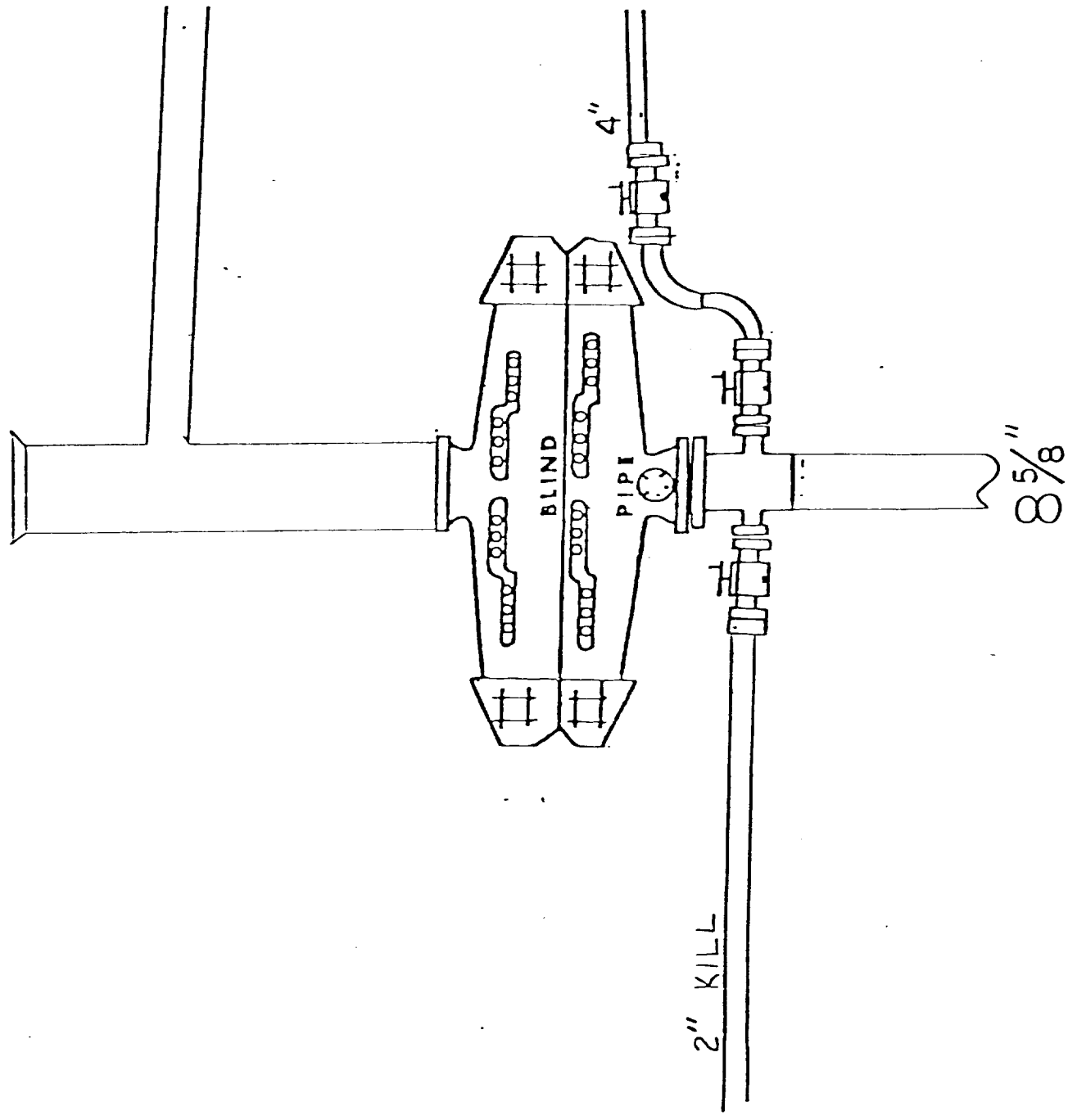
Registered Professional Engineer and/or Land Surveyor

Certificate No. JOHN W. WEST 676
PATRICK A. ROMERO 6665
Ronald J. Eidson 3239

MWJ STATE #1
BOP Sketch
First Nipple-Up
to 13 3/8" Csg Head



MMJ State #1
BOP Sketch
Second Nipple-Up
to 8 5/8" Csg Head



SECOND NIPPLE-UP