

NEW MEXICO OIL CONSERVATION COMMISSION
WELL LOCATION AND ACREAGE DEDICATION PLAT

Form O-102
Supersedes O-128
Effective 10-65

All distances must be from the outer boundaries of the Section

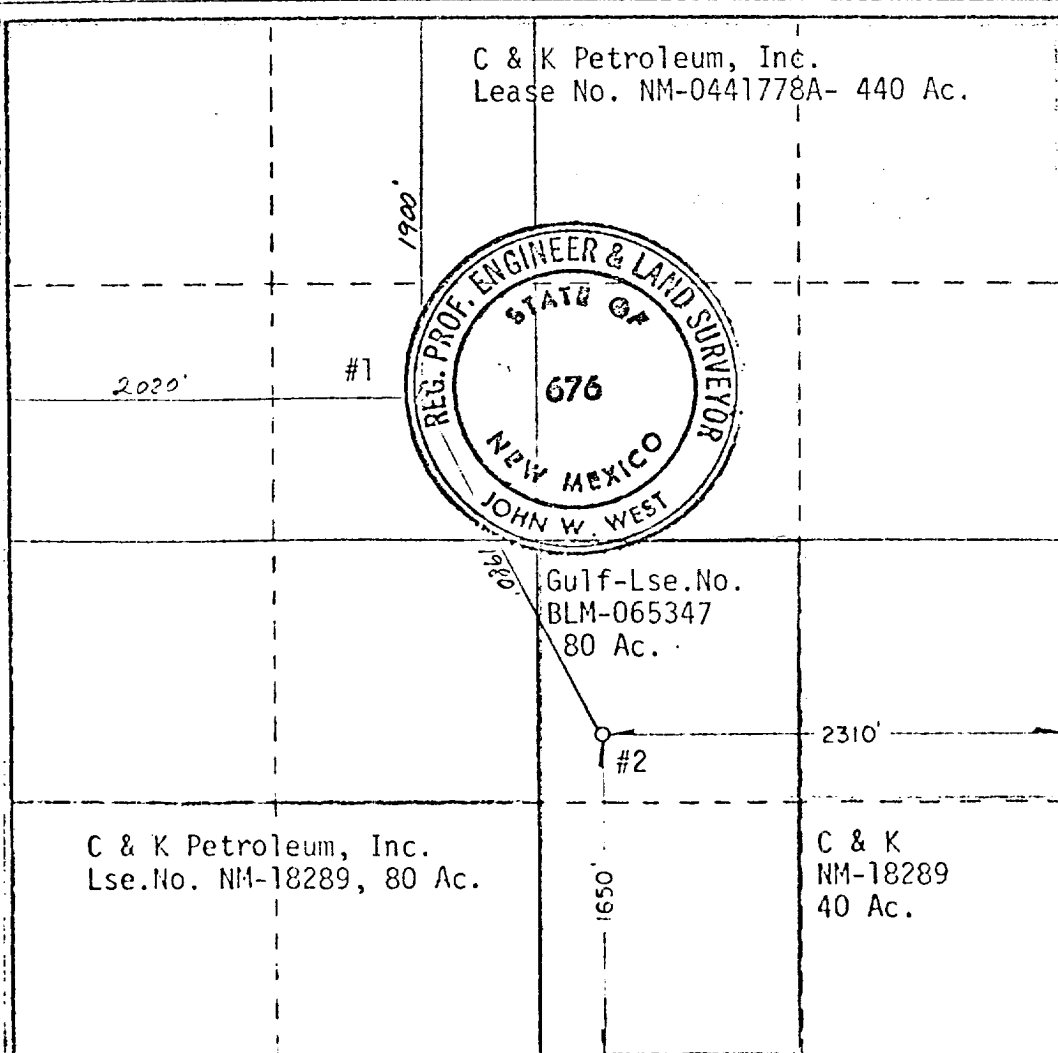
Operator C & K Petroleum, Incorporated		Lease Exxon Fed. Com.		Well No. 2
Tract Letter J	Section 17	Township 24 South	Range 26 East	County Eddy
Actual Footage Location of Well: 1650 feet from the south line and 2310 feet from the east line				
Ground Level Elev. 3434.8'	Producing Formation Morrow	Foot White City Penn	Dedicated Acreage: 640 Acres	

1. Outline the acreage dedicated to the subject well by colored pencil or hachure marks on the plat below.
2. If more than one lease is dedicated to the well, outline each and identify the ownership thereof (both as to working interest and royalty). (See Reverse)
3. If more than one lease of different ownership is dedicated to the well, have the interests of all owners been consolidated by communitization, unitization, force-pooling, etc?

☒ Yes ☐ No If answer is "yes," type of consolidation Communitization No. SW-808

If answer is "no," list the owners and tract descriptions which have actually been consolidated. (Use reverse side of this form if necessary.)

No allowable will be assigned to the well until all interests have been consolidated (by communitization, unitization, forced-pooling, or otherwise) or until a non-standard unit, eliminating such interests, has been approved by the Commission.



CERTIFICATION

I hereby certify that the information contained herein is true and complete to the best of my knowledge and belief.

K. Lunelle Zeeck
Name

K. Lunelle Zeeck

Position

Administrative Supervisor

Company

C & K Petroleum, Inc.

Date

November 12, 1981

I hereby certify that the well location shown on this plat was plotted from field notes of actual surveys made by me or under my supervision, and that the same is true and correct to the best of my knowledge and belief.

Date Surveyed

11-6-81

Registered Professional Engineer
(on this and Survey)

John W. West

Certificate No. **JOHN W. WEST 676**
PATRICK A. ROMERO 6563
Ronald J. Edeon 3239