

NEW MEXICO OIL CONSERVATION COMMISSION
WELL LOCATION AND ACREAGE DEDICATION PLAT

RECEIVED

AUG 13 1982

Form 1-77
Supersedes Form 1-76
Effective 1-77

All distances must be from the outer boundaries of the Section.

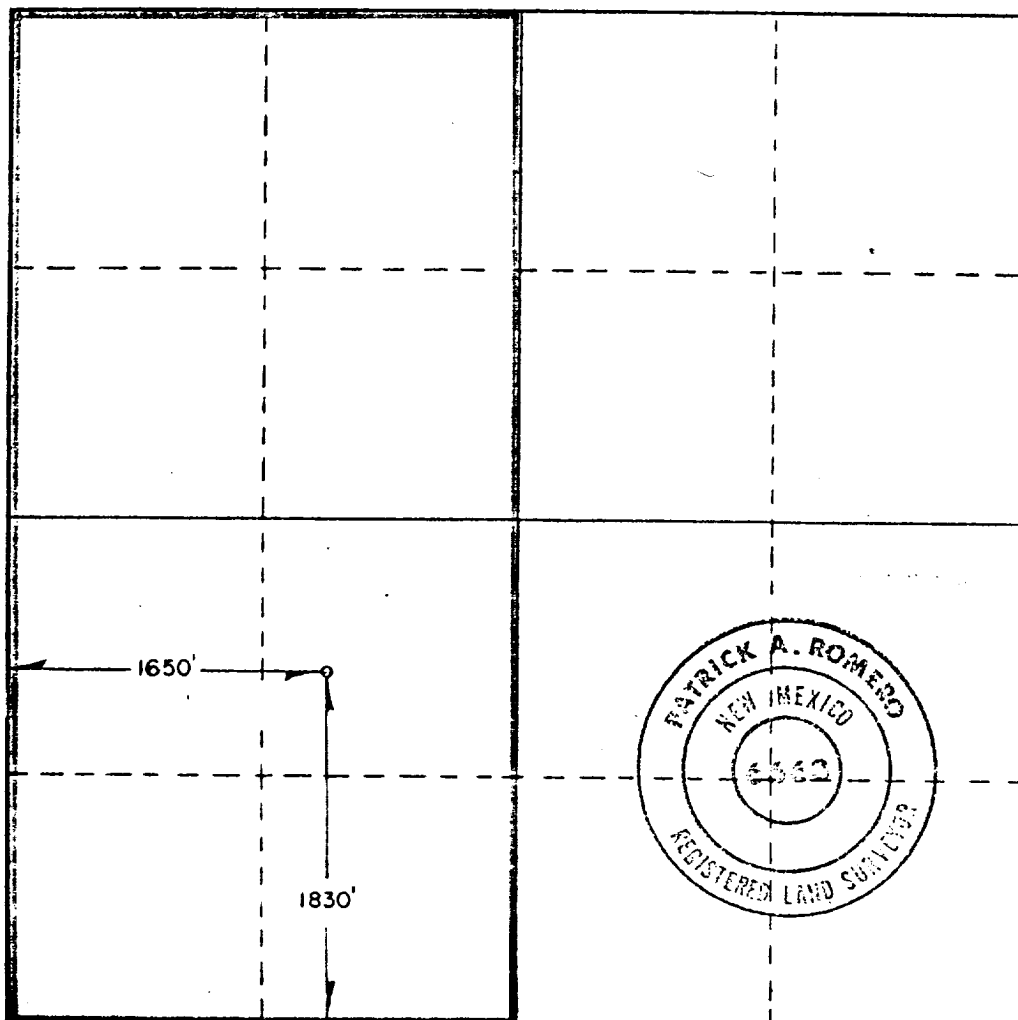
Operator GULF OIL CORP.		Lease WHITE CITY PENN. GAS COM. U. D. 2		Well No. 1
Unit Letter K	Section 20	Township 24 South	Range 26 East	County Eddy
Actual Footage Location of Well: 1830 feet from the South line and 1650 feet from the West line.				
Ground Level Elev. 3889	Producing Formation Morrow	Pool White City Penn	Designated Acreage 320	

1. Outline the acreage dedicated to the subject well by colored pencil or hatchure marks on the plat below.
2. If more than one lease is dedicated to the well, outline each and identify the ownership thereof (both as to working interest and royalty).
3. If more than one lease of different ownership is dedicated to the well, have the interests of all owners been consolidated by communitization, unitization, force-pooling, etc?

☒ Yes ☐ No If answer is "yes," type of consolidation communitization

If answer is "no," list the owners and tract descriptions which have actually been consolidated. (Use reverse side of this form if necessary.)

No allowable will be assigned to the well until all interests have been consolidated (by communitization, unitization, forced-pooling, or otherwise) or until a non-standard unit, eliminating such interests, has been approved by the Commission.



CERTIFICATION

I hereby certify that the information contained herein is true and complete to the best of my knowledge and belief.

R. D. Pitre

Name

R. D. Pitre

Position

Area Engineer

Company

Gulf Oil Corporation

Date

August 12, 1982

I hereby certify that the well location shown on this plat was plotted from field notes of actual surveys made by me or under my supervision, and that the same is true and correct to the best of my knowledge and belief.

Date Surveyed

2/12/82

Registered Professional Engineer and/or Land Surveyor

Patrick A. Romero

Certificate No. **JOHN W. WEST 676**
PATRICK A. ROMERO 6662
Ronald J. Eidson 3239