

SURFACE LOCATION
NE EXICO OIL CONSERVATION COMMISSION
WELL LOCATION AND ACREAGE DEDICATION PLAT

Form
Survey
10-1-78

All distances must be from the outer boundaries of the Section

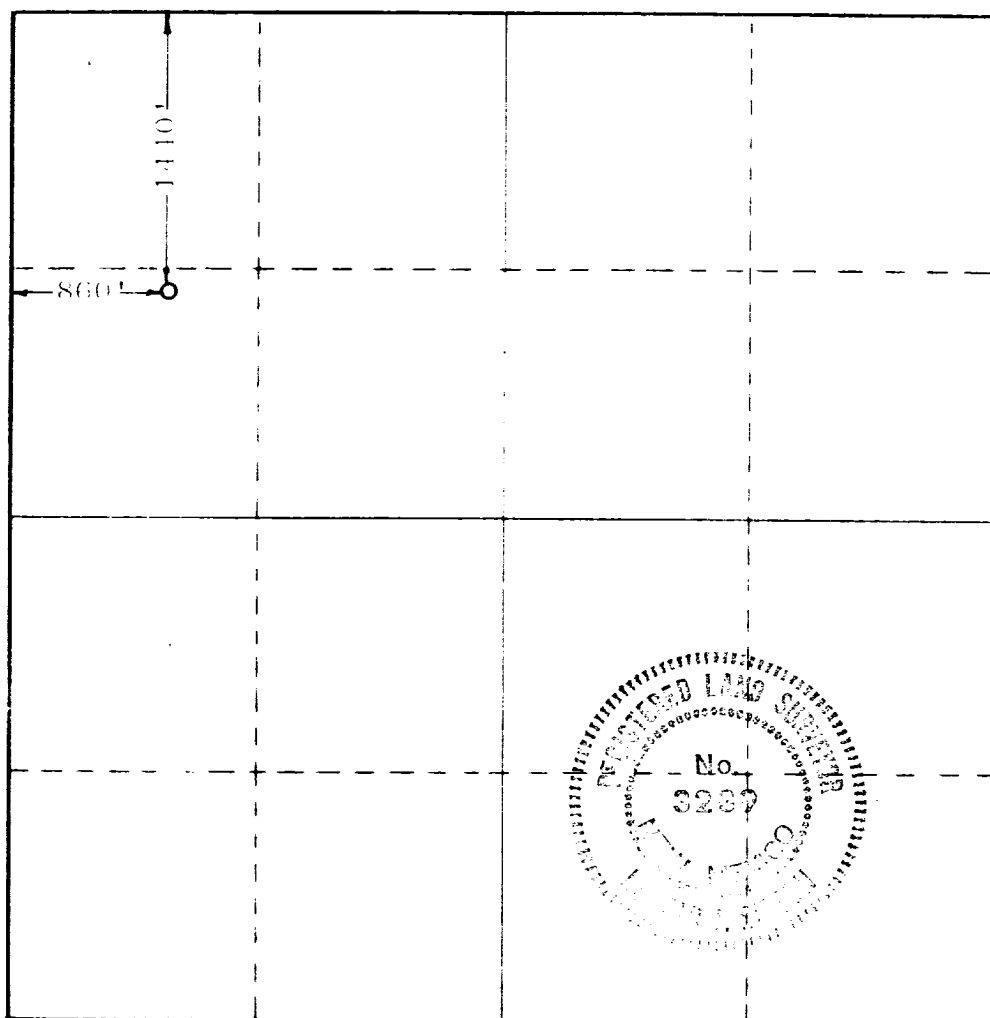
Operator PERRY R. BASS			Lease JAMES RANCH UNIT		Acres 13
Tract Letter E	Section 6	Township 23 SOUTH	Range 31 EAST	County EDDY	
Actual Footage Location of Well: <div style="display: flex; justify-content: space-between;"> 1410 feet from the NORTH line and 860 feet from the WEST line </div>					
Ground Level Elev. 3308.5	Producing Formation Morrow	Pool Los Medanos manana Wildcat	Depth of Aquifer 320		

1. Outline the acreage dedicated to the subject well by colored pencil or hatchure marks on the plat below.
2. If more than one lease is dedicated to the well, outline each and identify the ownership thereof (both as interest and royalty).
3. If more than one lease of different ownership is dedicated to the well, have the interests of all owners been dated by communitization, unitization, force-pooling, etc?

☒ Yes ☐ No If answer is "yes," type of consolidation Unit

If answer is "no," list the owners and tract descriptions which have actually been consolidated. (Use reverse of this form if necessary.) _____

No allowable will be assigned to the well until all interests have been consolidated (by communitization, unit forced-pooling, or otherwise) or until a non-standard unit, eliminating such interests, has been approved by the Commission.



CERTIFICATION

I hereby certify that the information contained herein is true and correct to the best of my knowledge and belief.

Stephen D. Smith

In the presence of
Stephen D. Smith
Engineering Assistant
Company
Perry R. Bass
Date
November 17, 1981

I hereby certify that the work shown on this plat was plotted from notes of actual surveys made under my supervision, and that the same is true and correct to the best of my knowledge and belief.

Date Surveyed
NOVEMBER 12, 1981
Registered Professional Engineer
in the State of New Mexico
Ronald J. Eidson

Certificate No. **JOHN W. WEST**
PATRICK A. ROMERO
Ronald J. Eidson

