

BOTTOM HOLE LOCATION
NEW MEXICO OIL CONSERVATION COMMISSION
WELL LOCATION AND ACREAGE DEDICATION PLAT

Form No. 1
Supersedes
Effective

All distances must be from the outer boundaries of the Section.

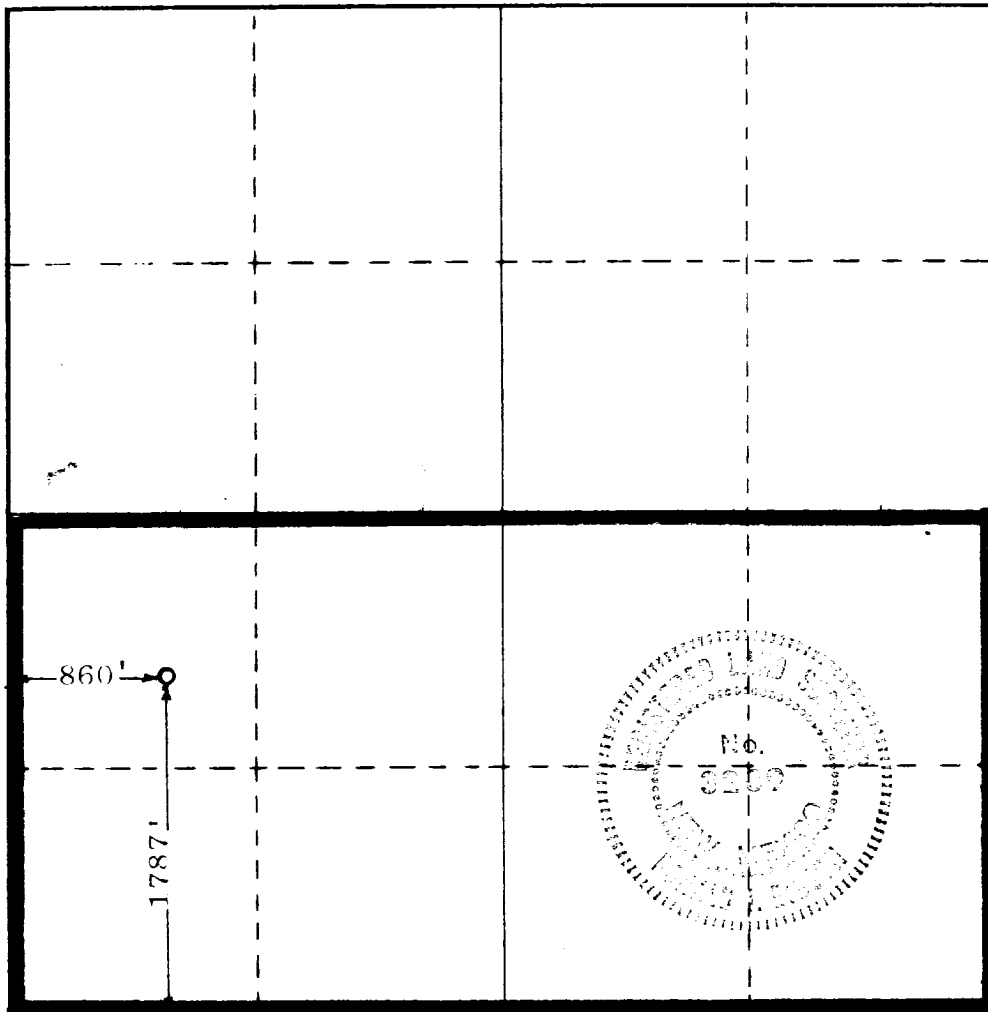
Operator PERRY R. BASS			Lease JAMES RANCH UNIT		Well No. 13
Unit Letter L	Section 31	Township 22 SOUTH	Range 31 EAST	County EDDY	
Actual Footage Location of Well: 1787 feet from the SOUTH line and 860 feet from the WEST line					
Ground Level Elev. -----	Producing Formation Morrow		Pool <i>Wildcat</i>	Dedicated Acreage 320	

1. Outline the acreage dedicated to the subject well by colored pencil. Eachure marks on the plat below.
2. If more than one lease is dedicated to the well, outline each and identify the ownership thereof (both as to ownership interest and royalty).
3. If more than one lease of different ownership is dedicated to the well, have the interests of all owners been consolidated by communitization, unitization, force-pooling, etc?

☒ Yes ☐ No If answer is "yes," type of consolidation Unit

If answer is "no," list the owners and tract descriptions which have actually been consolidated. (Use reverse side of this form if necessary.) _____

No allowable will be assigned to the well until all interests have been consolidated (by communitization, unitization, forced-pooling, or otherwise) or until a non-standard unit, eliminating such interests, has been approved by the Commission.



CERTIFICATION

I hereby certify that the information contained herein is true and complete to the best of my knowledge and belief.

Stephen D. Smith

Name
Stephen D. Smith

Position
Engineering Assistant

Company
Perry R. Bass

Date
November 17, 1981

I hereby certify that the well shown on this plat was plotted from notes of actual surveys made by me under my supervision, and that the same is true and correct to the best of my knowledge and belief.

Date Surveyed
NOVEMBER 12, 1981

Registered Professional Engineer and/or Land Surveyor

Ronald J. Eidson

Certificate No. **JOHN W. WEST**
PATRICK A. ROMERO
Ronald J. Eidson

0 330 660 990 1320 1650 1980 2310 2640 2000 1500 1000 500 0