

MEXICO OIL CONSERVATION COMMISSION
WELL LOCATION AND ACREAGE DEDICATION PLAT

Form C-102
Supersedes C-128
Effective 1-1-65

All distances must be from the outer boundaries of the Section.

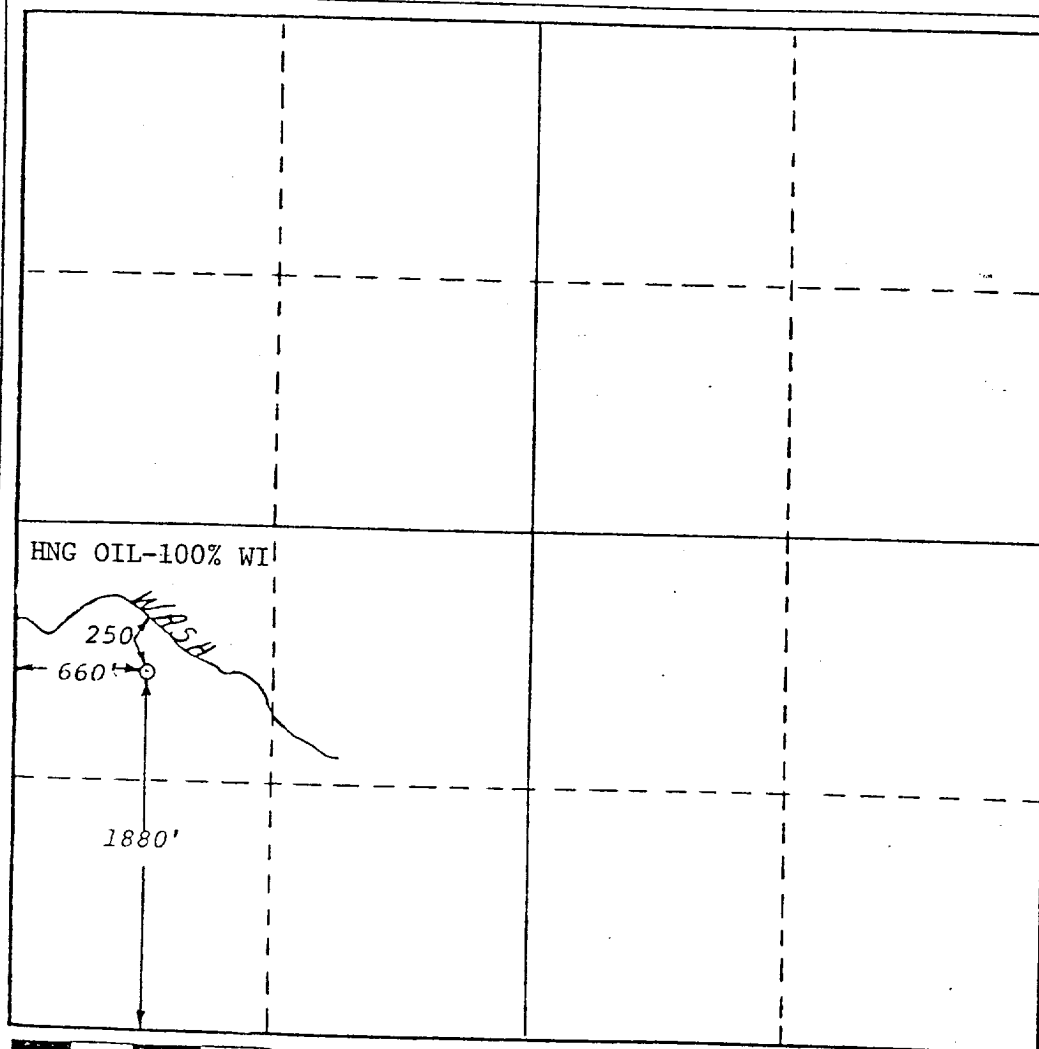
Operator H.N.G. OIL CO.			Lease Baldrige Canyon 5 State Com		Well No. 1
Unit Letter L	Section 5	Township 24-S	Range 25-E	County Eddy	
Actual Footage Location of Well:					
1880'		feet from the South line and		660' feet from the West line	
Ground Level Elev. 3841'	Producing Formation Bone Springs		Pool Wildcat		Dedicated Acreage: 40 Acres

1. Outline the acreage dedicated to the subject well by colored pencil or hachure marks on the plat below.
2. If more than one lease is dedicated to the well, outline each and identify the ownership thereof (both as to working interest and royalty).
3. If more than one lease of different ownership is dedicated to the well, have the interests of all owners been consolidated by communitization, unitization, force-pooling, etc?

☐ Yes ☐ No If answer is "yes," type of consolidation _____

If answer is "no," list the owners and tract descriptions which have actually been consolidated. (Use reverse side of this form if necessary.) _____

No allowable will be assigned to the well until all interests have been consolidated (by communitization, unitization, forced-pooling, or otherwise) or until a non-standard unit, eliminating such interests, has been approved by the Commission.



CERTIFICATION

I hereby certify that the information contained herein is true and complete to the best of my knowledge and belief.

Betty Gildon

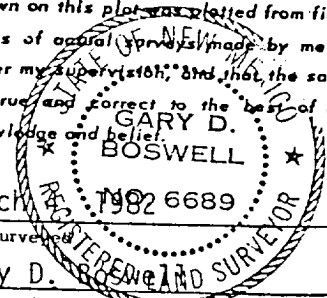
Name
Betty Gildon

Position
Regulatory Analyst

Company
HNG OIL COMPANY

Date
September 13, 1984

I hereby certify that the well location shown on this plat was plotted from field notes of actual survey made by me or under my supervision, and that the same is true and correct to the best of my knowledge and belief.



March 2, 1982 6689

Date Surveyed
Gary D. Boswell
Registered Professional Engineer
and/or Land Surveyor

Gary D. Boswell
Certificate No. **6689**

