

NE MEXICO OIL CONSERVATION COMMISSION
WELL LOCATION AND ACREAGE DEDICATION PLAT

RECEIVED

JUL 14 1982

Form C-102
Supersedes C-128
Effective 1-1-65

All distances must be from the outer boundaries of the Section

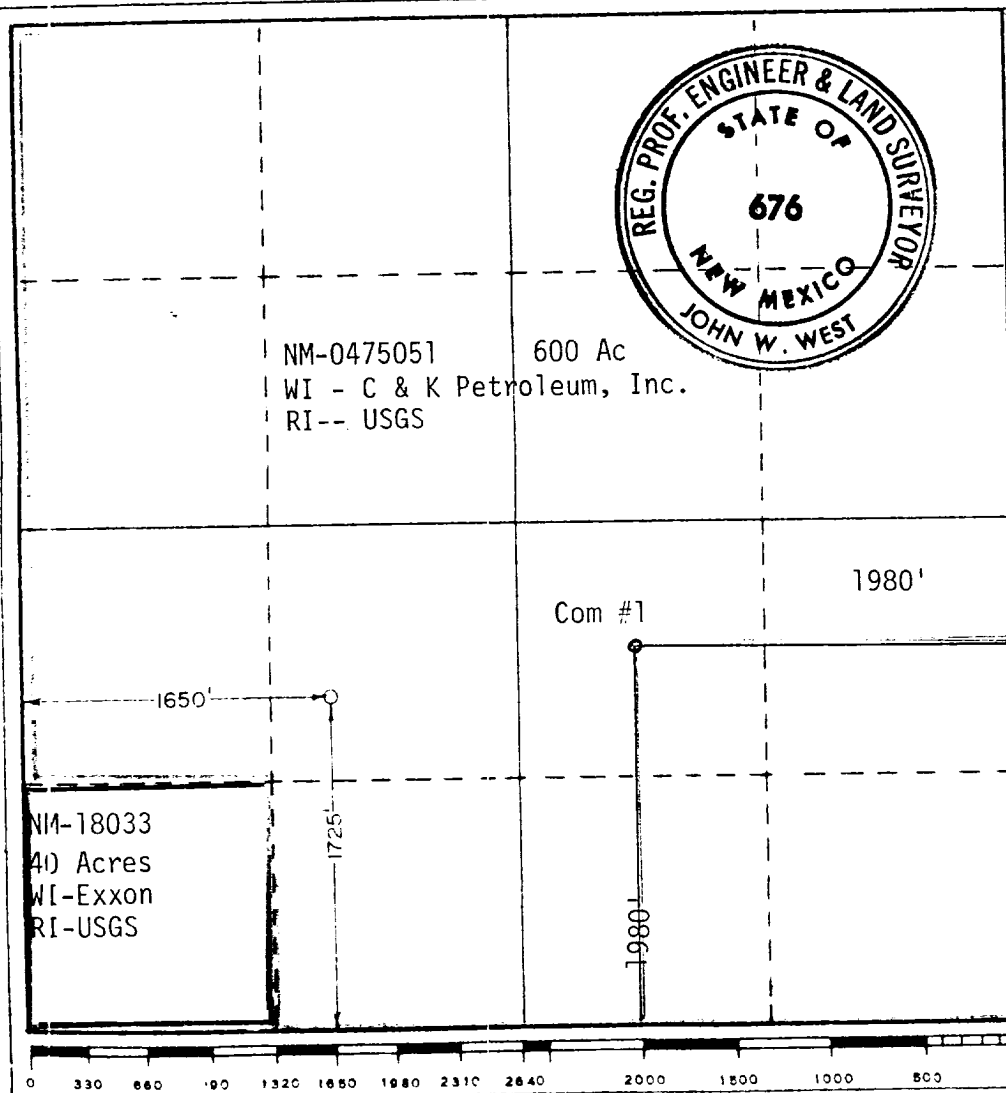
C & K Petroleum, Inc.,			Pennzoil Federal & Com		
Tract Letter K	Section 9	Township 24 South	Range 26 East	County Eddy	
Actual Well Location of Well: 1725 feet from the south line and 1650 feet from the west O. C. D.					
Ground Level Elev. 3390.1	Producing Formation Morrow	Pool White City Penn	ARRESTED OFFICE: 640 Acres		

- Outline the acreage dedicated to the subject well by colored pencil or hachure marks on the plat below.
- If more than one lease is dedicated to the well, outline each and identify the ownership thereof (both as to working interest and royalty).
- If more than one lease of different ownership is dedicated to the well, have the interests of all owners been consolidated by communitization, unitization, force-pooling, etc?

☐ Yes ☐ No If answer is "yes," type of consolidation Communitization

If answer is "no," list the owners and tract descriptions which have actually been consolidated. (Use reverse side of this form if necessary.)

No allowable will be assigned to the well until all interests have been consolidated (by communitization, unitization, forced-pooling, or otherwise) or until a non-standard unit, eliminating such interests, has been approved by the Commission.



CERTIFICATION

I hereby certify that the information contained herein is true and complete to the best of my knowledge and belief.

Name Michael W. Gore
Position Drilling Superintendent
Company C & K PETROLEUM, INC.
Date July 14, 1982

I hereby certify that the well location shown on this plat was plotted from field notes of actual surveys made by me or under my supervision, and that the same is true and correct to the best of my knowledge and belief.

Date Surveyed 10-8-81
Registered Professional Engineer and/or Land Surveyor

Certificate No JOHN W. WEST 676
PATRICK A. ROMERO 6663
Ronald J. Eidson 3239