

NM OIL CONS. COMMISSION
Drawer DD
Artesia, NM 88210
UNITED STATES
DEPARTMENT OF THE INTERIOR
GEOLOGICAL SURVEY

SUBMIT IN TRIPLICATE
(Other instructions on
reverse side)

Form approved.
Budget Bureau No. 42-R1425.

APPLICATION FOR PERMIT TO DRILL, DEEPEN, OR PLUG BACK

1a. TYPE OF WORK

DRILL ☒

DEEPEN ☐

PLUG BACK ☐

b. TYPE OF WELL

OIL
WELL ☐

GAS
WELL ☒

OTHER ☐

SINGLE
ZONE ☒

MULTIPLE
ZONE ☐

2. NAME OF OPERATOR

Texas American Oil Corporation

3. ADDRESS OF OPERATOR

300 West Wall, Suite 1012, Midland, Texas 79701

RECEIVED

4. LOCATION OF WELL (Report location clearly and in accordance with any State requirements.)

At surface

1980' S & 1800' E NW/4 SE/4

At proposed prod. zone

Same

AUG 31 1982

14. DISTANCE IN MILES AND DIRECTION FROM NEAREST TOWN OR POST OFFICE*

20 miles east of Loving, New Mexico

O. C. D.
ARTESIA OFFICE

15. DISTANCE FROM PROPOSED*

LOCATION TO NEAREST
PROPERTY OR LEASE LINE, FT.
(Also to nearest drlg. unit line, if any)

1800'

16. NO. OF ACRES IN LEASE

1320

17. NO. OF ACRES ASSIGNED
TO THIS WELL

640

18. DISTANCE FROM PROPOSED LOCATION*

TO NEAREST WELL, DRILLING, COMPLETED,
OR APPLIED FOR, ON THIS LEASE, FT.

150' West

19. PROPOSED DEPTH

14,500'

20. ROTARY OR CABLE TOOLS

Rotary

21. ELEVATIONS (Show whether DF, RT, GR, etc.)

3447.7 GR

22. APPROX. DATE WORK WILL START*

Aug. 30, 1982

23. PROPOSED CASING AND CEMENTING PROGRAM

SIZE OF HOLE	SIZE OF CASING	WEIGHT PER FOOT	SETTING DEPTH	QUANTITY OF CEMENT
26"	20"	94.0#	700'±	1200 sx(Circulate)
17½"	13 3/8"	68.0#	5000'±	4675 sx(Circulate)
12½"	9 5/8"	47 & 53.5#	12,400'±	5060 sx(Return to 5000')
9 3/4"	7 5/8"	44.60#	12,400-TD	740 sx(Return to 12,400')

Proposed plans are to drill to the Atoka and test for possible commercial production.

Possibly test intermediate zones of interest.

RECEIVED

GAS IS DEDICATED.

OIL & GAS
MINERALS MGMT. SERVICE
ROSWELL, NEW MEXICO

IN ABOVE SPACE DESCRIBE PROPOSED PROGRAM: If proposal is to deepen or plug back give data on present productive zone and proposed new productive zone. If proposal is to drill or deepen directionally, give pertinent data on subsurface locations and measured and true vertical depths. Give blowout preventer program, if any.

24.

SIGNED

Jerry W. Franklin

TITLE

Agent

DATE

8/23/82

(This space for Federal or State office use)

PERMIT NO.

APPROVAL DATE

APPROVED BY

TITLE

DATE

CONDITIONS OF APPROVAL, IF ANY:

NEW MEXICO OIL CONSERVATION COMMISSION
WELL LOCATION AND ACREAGE DEDICATION PLAT

Form C-102
Supersedes C-128
Effective 1-1-65

All distances must be from the outer boundaries of the Section

Owner TEXAS AMERICAN OIL CO.		Lease No. 23 TODD FED 23		Well No. 3
Section J	Section 23	Section 23 SOUTH	Section 31 EAST	Section EDDY
Section 1980		Section SOUTH	Section 1800	Section EAST
Section 3447.7		Section ATOKA	Section SAND DUNES - Atoka	Section 640

- Outline the acreage dedicated to the subject well by colored pencil or hachure marks on the plat below.
- If more than one lease is dedicated to the well, outline each and identify the ownership thereof (both as to working interest and royalty)
- If more than one lease of different ownership is dedicated to the well, have the interests been consolidated by communitization, unitization, force-pooling, etc?

RECEIVED

AUG 25 1982

☐ Yes ☐ No If answer is "yes" type of consolidation _____

If answer is "no" list the owners and tract descriptions which have actually been consolidated (reverse side of this form if necessary.) _____

No allowable will be assigned to the well until all interests have been consolidated (unitization, forced-pooling, or otherwise) or until a non-standard unit, eliminating such interests, has been approved by the Commission.

CERTIFICATION

I hereby certify that the information contained herein is true and complete to the best of my knowledge and belief.

Serry W. Franklin

AGENT

TEXAS AMERICAN OIL CORP.

8/23/82

I hereby certify that the well location shown on this plat was plotted from field notes of aerial surveys made by me or under my supervision and that the same is true and correct to the best of my knowledge and belief.

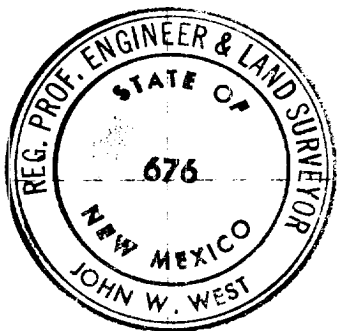
Date Surveyed

8-19-82

Registered Professional Engineer and Professional Surveyor

John W. West

Certificate No **JOHN W. WEST 676**
PATRICK A. ROMERO 6663
Ronald J. Eidson 3239



330 640 950 1260 1570 1880 2190 2500 2810 3120 3430 3740 4050 4360 4670 4980 5290 5600 5910 6220 6530 6840 7150 7460 7770 8080 8390 8700 9010 9320 9630 9940 10250 10560 10870 11180 11490 11800 12110 12420 12730 13040 13350 13660 13970 14280 14590 14900 15210 15520 15830 16140 16450 16760 17070 17380 17690 18000 18310 18620 18930 19240 19550 19860 20170 20480 20790 21100 21410 21720 22030 22340 22650 22960 23270 23580 23890 24200 24510 24820 25130 25440 25750 26060 26370 26680 26990 27300 27610 27920 28230 28540 28850 29160 29470 29780 30090 30400 30710 31020 31330 31640 31950 32260 32570 32880 33190 33500 33810 34120 34430 34740 35050 35360 35670 35980 36290 36600 36910 37220 37530 37840 38150 38460 38770 39080 39390 39700 40010 40320 40630 40940 41250 41560 41870 42180 42490 42800 43110 43420 43730 44040 44350 44660 44970 45280 45590 45900 46210 46520 46830 47140 47450 47760 48070 48380 48690 49000 49310 49620 49930 50240 50550 50860 51170 51480 51790 52100 52410 52720 53030 53340 53650 53960 54270 54580 54890 55200 55510 55820 56130 56440 56750 57060 57370 57680 57990 58300 58610 58920 59230 59540 59850 60160 60470 60780 61090 61400 61710 62020 62330 62640 62950 63260 63570 63880 64190 64500 64810 65120 65430 65740 66050 66360 66670 66980 67290 67600 67910 68220 68530 68840 69150 69460 69770 70080 70390 70700 71010 71320 71630 71940 72250 72560 72870 73180 73490 73800 74110 74420 74730 75040 75350 75660 75970 76280 76590 76900 77210 77520 77830 78140 78450 78760 79070 79380 79690 79999

505 Marquette NW
Suite 815
Albuquerque, New Mexico 87125

27 AUG 1982

Texas American Oil Corporation
300 West Wall, Suite 1012
Midland, Texas 79701

Gentlemen:

Your application for Permit to Drill well No. 3 Todd Federal '23' in the NW¹/₄SE¹/₄, sec. 23, T. 23S., R. 31E., Eddy County, New Mexico, lease NM-0405444, to a depth of 14,500 feet to test the Atoka formation in the oil-potash area, is hereby approved as amended by stipulations attached to the application.

One copy of the application is returned herewith. Please notify the District Supervisor, Minerals Management Service, Roswell, New Mexico, in sufficient time for a representative to witness all cementing operations.

Sincerely yours,

(Enc. 3) (7-1000) (P. 701)
Gene F. Daniel
Deputy Minerals Manager
Oil and Gas

Enclosure

cc:

✓ NMOCD (2)
BLM - Carlsbad
MM, SCR
DMM - Mining (2)
Regional Files
Roswell District Files
Artesia Sub-district
Suspense File
ARF
RCF

JAGillham/ml1/8-27-82

APPLICATION TO DRILL

TEXAS AMERICAN OIL CORPORATION
Todd Federal '23' No. 3
1980' FSL & 1800' FEL
Sec. 23, T23S, R31E
Eddy County, N.M.

NM-0405444

RECEIVED

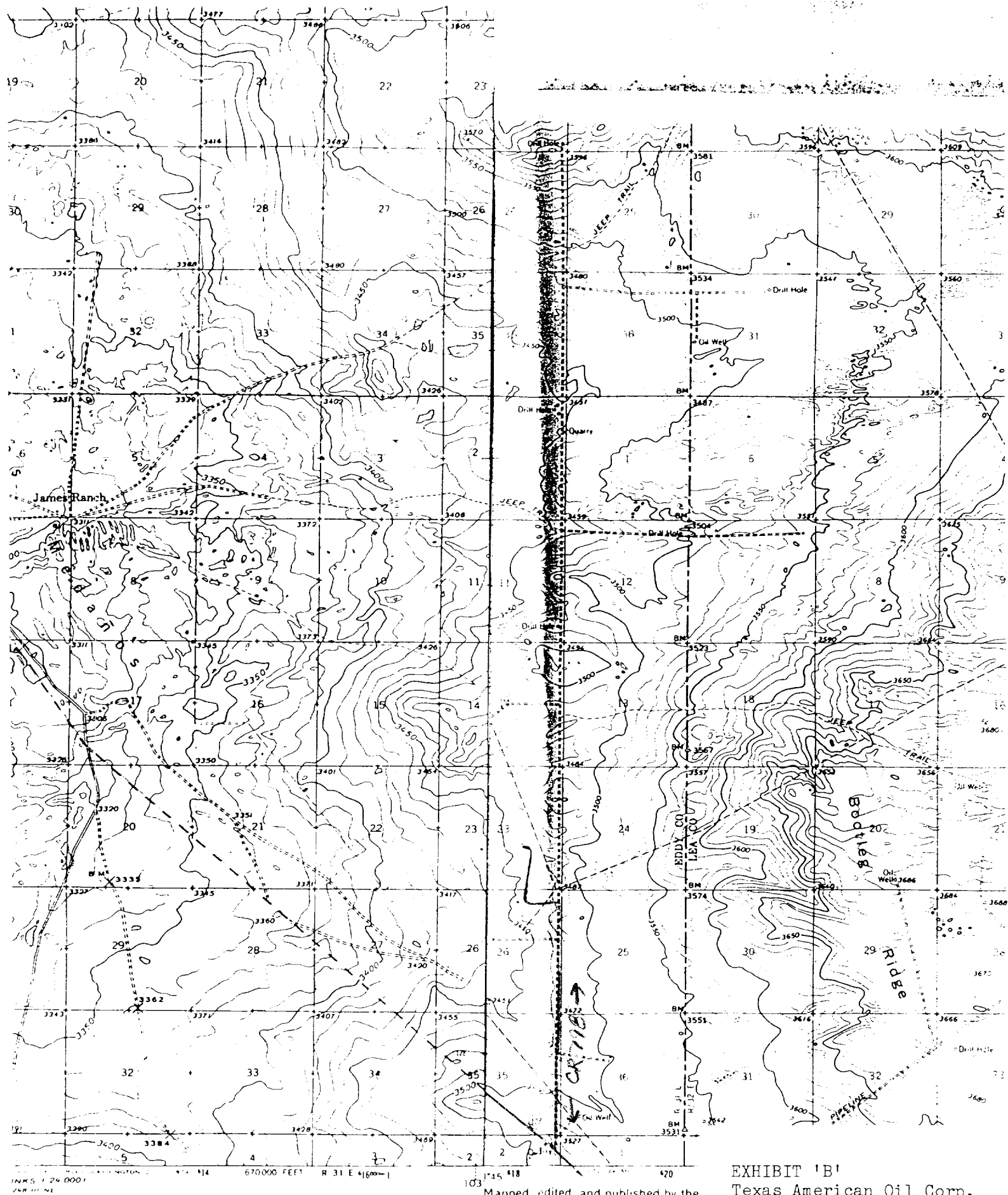
AUG 25 1982

OIL & GAS
MINERALS MGMT. SERVICE
ROSWELL, NEW MEXICO

The following items supplement Form 9-331C in accordance with instructions contained in NTL-6:

1. Geologic Name of Surface Formation: Aeolian origin.
2. Drilling Tools and Associated Equipment: Convention rotary drilling tools using mud for the circulation medium.
3. Proposed Drilling Depth: 14,500'±
4. Estimated Geological Marker Tops:

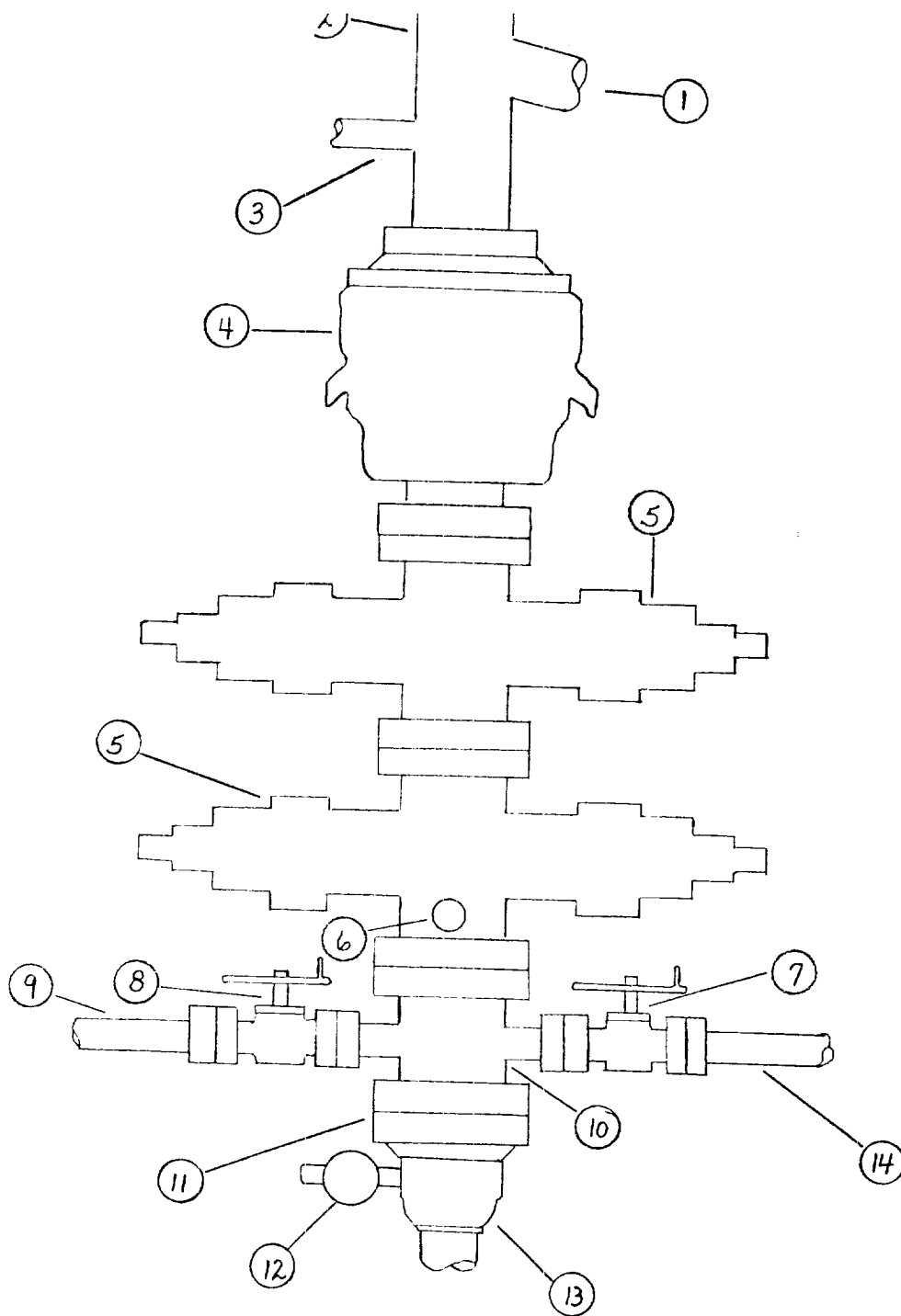
Bell Canyon	4350'	Bone Springs	8970'
Cherry Canyon	6000'	Atoka	13,670'
5. Mineral Bearing Formation: Gas bearing at 13,950'±
6. Casing Program:
 - a. 30" Conductor set at 40'. Redi-mix to surface.
 - b. 20", 94.0#, H-40 ST&C casing set at 700'±. Circulate cement to surface with approximately 1200 sx of cement.
 - c. 13 3/8" casing set at 5000'±. 0-3400': 68#GJ K-55 ST&C casing. 3400'-5000': 68#GSA S-80 ST&C casing. Cement to surface using 4675 sx of cement.
 - d. 9 5/8" casing set at 12,400'±. 0-10,000': 47#, P-110, LT&C casing. 10,000'-12,400': 53.5#, P-110, LT&C casing. Return cement to 5000' using approximately 5060 sx of cement.
 - e. 7 5/8", 44.60#, P-110, FL&S liner set from 12,400' to total depth. Return cement to 12,400' using approximately 740 sx of cement.



1:24,000
 670,000 FEET R 31 E 16000
 103 145 418 420
 Mapped, edited, and published by the

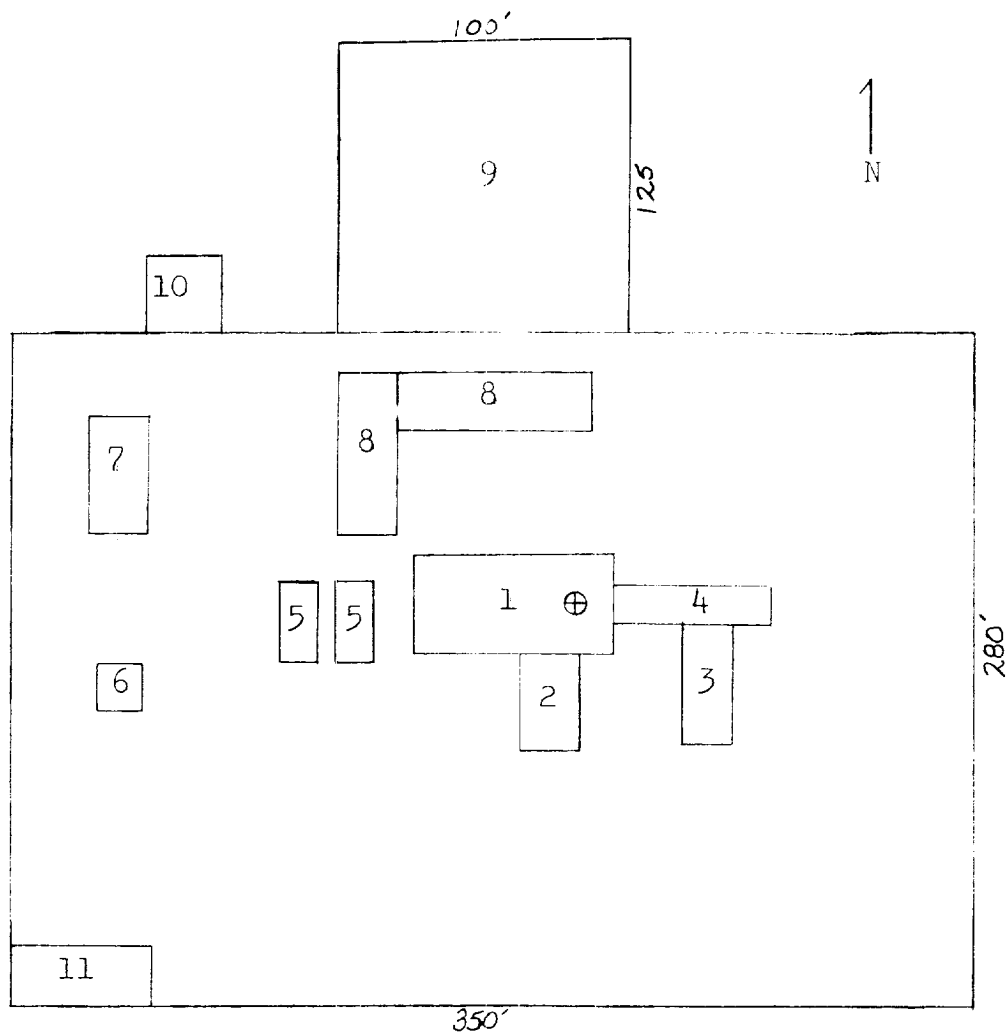
Polyconic projection 1927 North American datum
 10000 foot grid based on New Mexico (East)-
 rectangular coordinate system
 1000 meter Universal Transverse Mercator grid
 ticks zone 13, shown in blue
 Control by USGS and USC&GS
 Planimetry by photogrammetric methods from aeri-
 taken 1957 Topography by planetable surveys 19
 Polyconic projection 1927 North American datum
 10000 foot grid based on New Mexico (East)-

EXHIBIT 'B'
 Texas American Oil Corp.
 Todd Federal '23' No. 3
 1980' FSL & 1800' FEL
 Sec. 23, T23S, R31E
 Eddy County, N.M.



- | | |
|-----------------------------|----------------------------|
| 1. Flowline | 8. Gate Valve |
| 2. Bell Nipple | 9. Kill Line |
| 3. Fill Up Line | 10. Drilling Spool |
| 4. Bag Preventer | 11. Flange |
| 5. Hydraulic Ram Preventers | 12. Gate Valve |
| 6. Side Outlets | 13. Casing Head |
| 7. Gate Valve | 14. Line to Choke Manifold |

BOP DIAGRAM



- | | |
|-----------------|-------------------|
| 1. Substructure | 7. Water Tank |
| 2. Doghouse | 8. Working Pits |
| 3. Piperacks | 9. Reserve Pits |
| 4. Catwalk | 10. Trash Pit |
| 5. Mud Pumps | 11. Trailer House |
| 6. Light Plant | |

EXHIBIT 'C'
 Texas American Oil Corp.
 Todd Federal '23' No. 3
 1980' FSL & 1800' FEL
 Sec. 23, T23S, R31E
 Eddy County, N.M.