

NEW MEXICO OIL CONSERVATION COMMISSION
WELL LOCATION AND ACREAGE DEDICATION PLAT

RECEIVED Form C-102
Supersedes C-128
Effective 1-1-65

All distances must be from the outer boundaries of the Section

NOV 10 1982

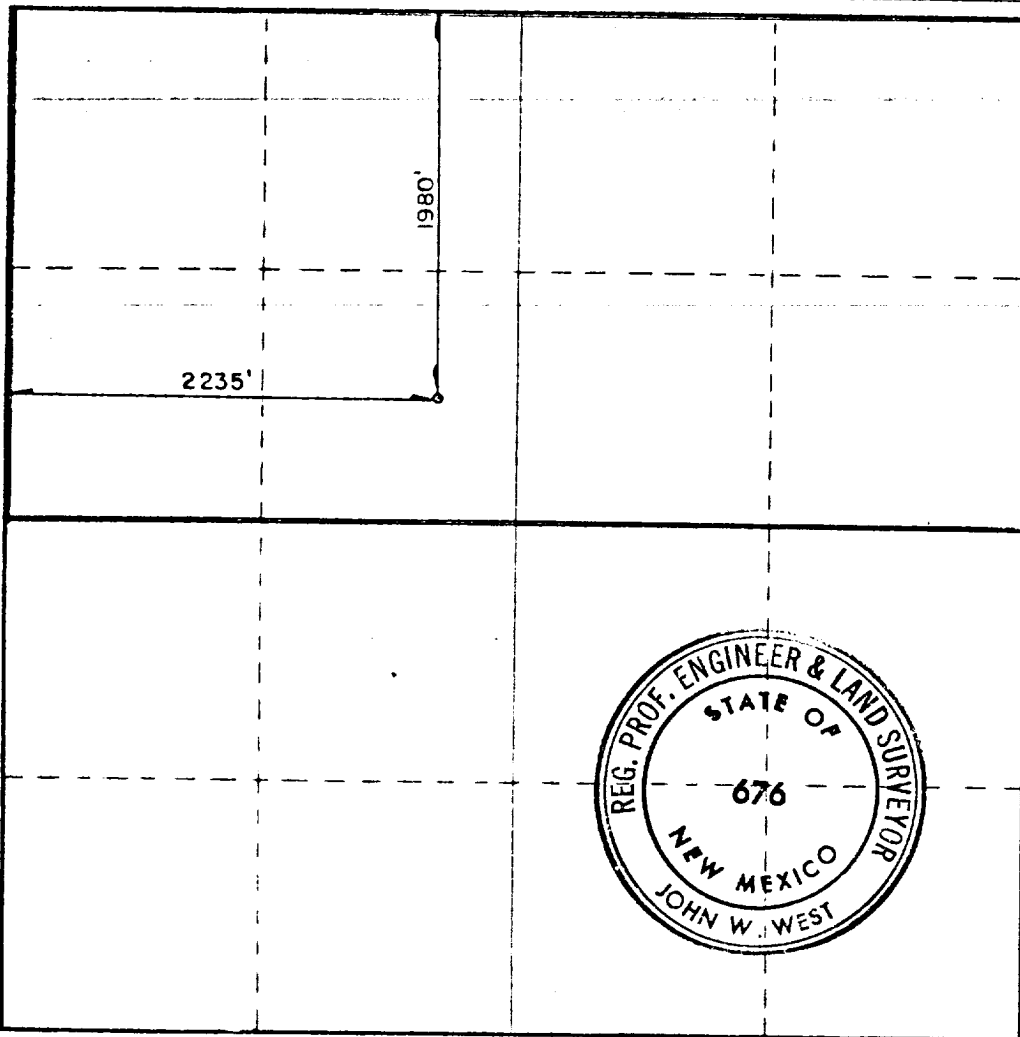
Operator GULF OIL CORP.		Lease LOVING FED COM		Well No. 1	
Unit Letter F	Section 4	Township 23S	Range 28E	County EDDY	ARTESIA, OFFICE
Actual Footage Location of Well:					
1980 feet from the NORTH line and		2235 feet from the WEST line			
Ground Level Elev. 3033.1	Producing Formation Morrow	Foot Und Morrow	Dedicated Acreage: 320 Acres		

1. Outline the acreage dedicated to the subject well by colored pencil or hachure marks on the plat below.
2. If more than one lease is dedicated to the well, outline each and identify the ownership thereof (both as to working interest and royalty).
3. If more than one lease of different ownership is dedicated to the well, have the interests of all owners been consolidated by communitization, unitization, force-pooling, etc?

☒ Yes ☐ No If answer is "yes," type of consolidation Communitization

If answer is "no," list the owners and tract descriptions which have actually been consolidated. (Use reverse side of this form if necessary.)

No allowable will be assigned to the well until all interests have been consolidated (by communitization, unitization, forced-pooling, or otherwise) or until a non-standard unit, eliminating such interests, has been approved by the Commission.



CERTIFICATION

I hereby certify that the information contained herein is true and complete to the best of my knowledge and belief.

R. C. Anderson

Name

R. C. Anderson

Position

Area Production Manager

Company

Gulf Oil Corporation

Date

11-1-82

I hereby certify that the well location shown on this plat was plotted from field notes of actual surveys made by me or under my supervision, and that the same is true and correct to the best of my knowledge and belief.

Date Surveyed

10/21/82

Registered Professional Engineer and/or Land Surveyor

Certificate No.

0 330 660 990 1320 1650 1980 2310 2640 2970 3300 3630 3960 4290 4620 4950 5280 5610 5940 6270 6600

sm