

NEW OIL CONS. COMMISSION
Drawer
Artesia, NM 88210SUBMIT IN PLICATE*
(Other instructions on
reverse side)Form approved.
Budget Bureau No. 42-R1425.UNITED STATES
DEPARTMENT OF THE INTERIOR
GEOLOGICAL SURVEY

APPLICATION FOR PERMIT TO DRILL, DEEPEN, OR PLUG BACK

1a. TYPE OF WORK
DRILL ☒ DEEPEN ☐ PLUG BACK ☐

b. TYPE OF WELL
OIL WELL ☒ GAS WELL ☐ OTHER ☐

2. NAME OF OPERATOR
Exxon Corporation

3. ADDRESS OF OPERATOR
P. O. Box 1600, Midland, TX 79702

4. LOCATION OF WELL (Report location clearly and in accordance with any State requirements.)*
At surface 1980' FSL and 660' FWL of Section
At proposed prod. zone

14. DISTANCE IN MILES AND DIRECTION FROM NEAREST TOWN OR POST OFFICE*
10 miles South from Carlsbad

15. DISTANCE FROM PROPOSED* LOCATION TO NEAREST PROPERTY OR LEASE LINE, FT. (Also to nearest drlg. unit line, if any) 660' lease line 660' drlg. line

16. NO. OF ACRES IN LEASE
80

17. NO. OF ACRES ASSIGNED TO THIS WELL
40

18. DISTANCE FROM PROPOSED LOCATION* TO NEAREST WELL, DRILLING, COMPLETED, OR APPLIED FOR, ON THIS LEASE, FT. None

19. PROPOSED DEPTH
8000'

20. ROTARY OR CABLE TOOLS
Rotary

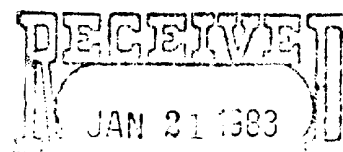
21. ELEVATIONS (Show whether DF, RT, GR, etc.)
3231' GR

22. APPROX. DATE WORK WILL START*
1st quarter 1983

23. PROPOSED CASING AND CEMENTING PROGRAM

SIZE OF HOLE	SIZE OF CASING	WEIGHT PER FOOT	SETTING DEPTH	QUANTITY OF CEMENT
17 1/2"	13 3/8"	54.5#	40'	CIRCULATE 25 sx
12 1/4"	8 5/8"	24.0#	600'	CIRCULATE 300 sx
7 7/8"	5 1/2"	14.0#	5000'	} 2000 sx
7 7/8"	5 1/2"	15.5#	7000'	
7 7/8"	5 1/2"	17.0#	8000'	

Gas is not dedicated to a purchaser.

OIL & GAS
U.S. GEOLOGICAL SURVEY
ROSWELL, NEW MEXICO

IN ABOVE SPACE DESCRIBE PROPOSED PROGRAM: If proposal is to deepen or plug back, give data on present productive zone and proposed new productive zone. If proposal is to drill or deepen directionally, give pertinent data on subsurface locations and measured and true vertical depths. Give blowout preventer program, if any.

24. SIGNED Melba Knippling TITLE Unit Head DATE January 18, 1983

(This space for Federal or State office use)

PERMIT NO. APPROVED APPROVAL DATE _____
(Orig. Sgd.) GEORGE H. STEWART
APPROVED BY _____ TITLE _____ DATE _____
CONDITIONS OF APPROVAL, IF ANY:JAN 21 1983
JAMES A. GILLHAM
DISTRICT SUPERVISOR

*See Instructions On Reverse Side

Exxon Lse. No. _____ MEXICO OIL CONSERVATION COMMISSION
State Lse. No. _____ WELL LOCATION AND ACREAGE DEDICATION PLAT
Federal Lse. No. _____ All distances must be from the outer boundaries of the Section.

Form C-102
Supersedes C-128
Effective 1-1-65

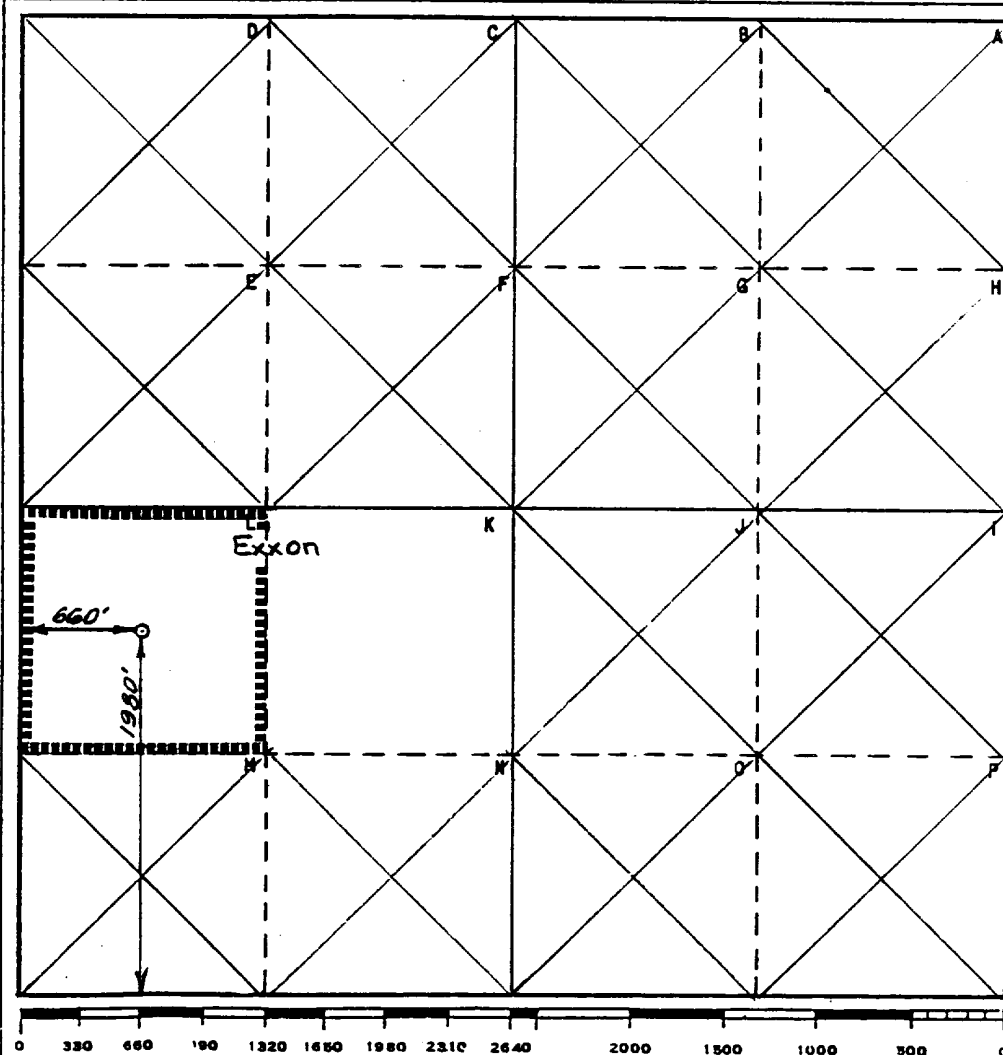
Operator Exxon Corporation			Lease SIMASKO FED.		Well No. 1
Unit Letter L	Section 25	Township 23 S	Range 26 E	County Eddy	
Actual Footage Location of Well: 1980 feet from the South line and 660 feet from the West line					
Ground Level Elev. 3231'	Producing Formation Bone Springs		Pool Wildcat		Dedicated Acreage: 40 Acres

1. Outline the acreage dedicated to the subject well by colored pencil or hatchure marks on the plat below.
2. If more than one lease is dedicated to the well, outline each and identify the ownership thereof (both as to working interest and royalty).
3. If more than one lease of different ownership is dedicated to the well, have the interests of all owners been consolidated by communitization, unitization, force-pooling, etc?

☐ Yes ☐ No If answer is "yes," type of consolidation _____

If answer is "no," list the owners and tract descriptions which have actually been consolidated. (Use reverse side of this form if necessary.) _____

No allowable will be assigned to the well until all interests have been consolidated (by communitization, unitization, forced-pooling, or otherwise) or until a non-standard unit, eliminating such interests, has been approved by the Commission.



CERTIFICATION

I hereby certify that the information contained herein is true and complete to the best of my knowledge and belief.

Name
Melba Knippling
Position
UNIT HEAD
Company Exxon Corporation
Box 1600 Midland, Texas
Date
1-18-83

I hereby certify that the well location shown on this plat was plotted from field notes of actual surveys made by me or under my supervision, and that the same is true and correct to the best of my knowledge and belief.

Date Surveyed
1-14-83

Registered Professional Engineer
and/or Land Surveyor

W. J. Richmond
Certificate No.
6157

-10 Miles S. of Carlsbad, New Mexico

C.E. Sec. File No. WA-7979

10 POINT PLAN
SIMASKO FEDERAL #1
Section 25, T23S, R26E
Eddy County, New Mexico
January 17, 1983

1. The geologic name of the surface formation: Castile

2. The estimated tops of important geologic markers:

Delaware Mt. Grp. : 1750'
Bone Spring : 5250'

3. The estimated depths at which anticipated water, oil, gas, or other mineral bearing formations are expected to occur:

Deepest FW : 500'
Oil
Bone Spring : 6000'

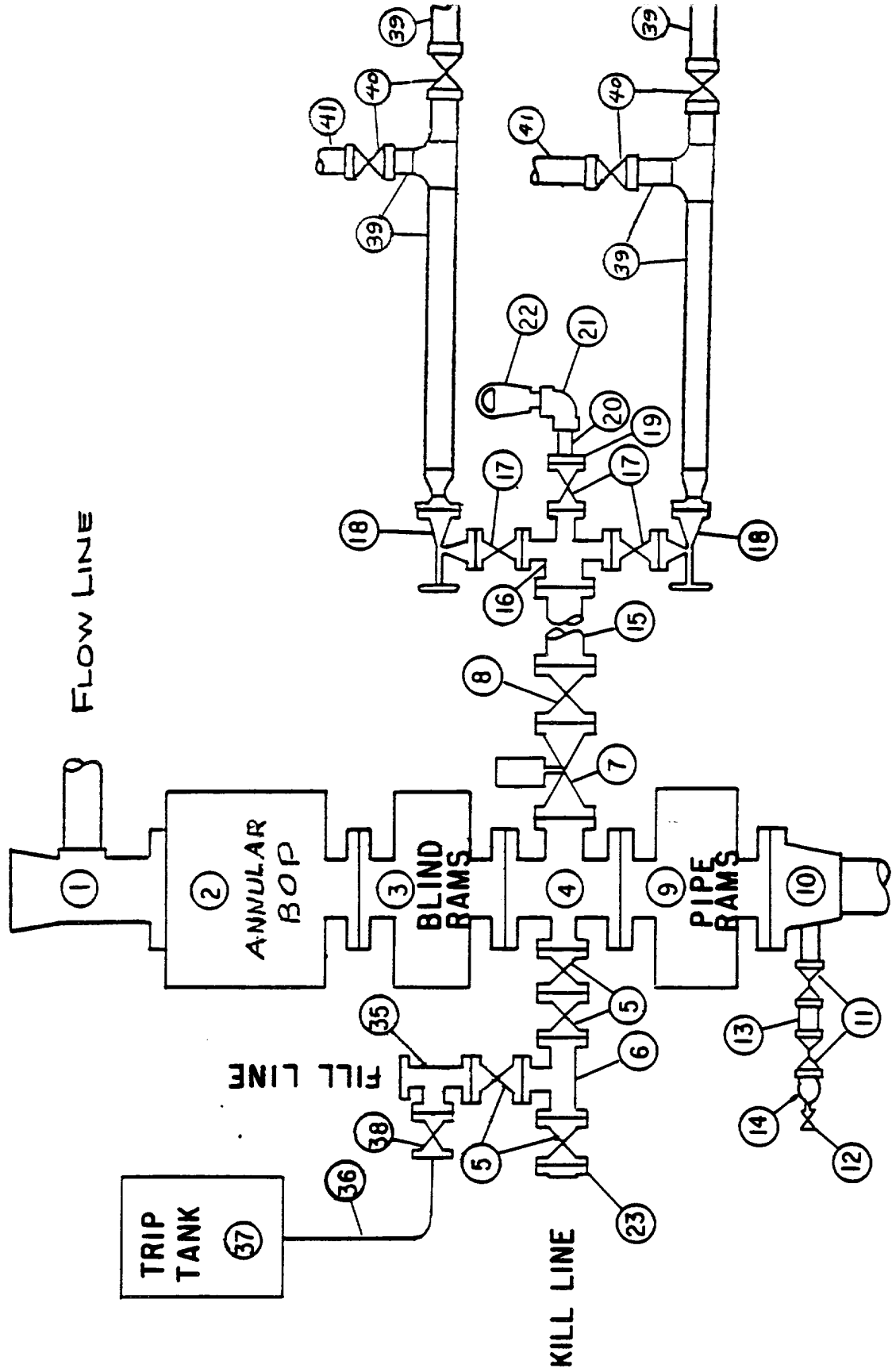
4. Proposed casing program:

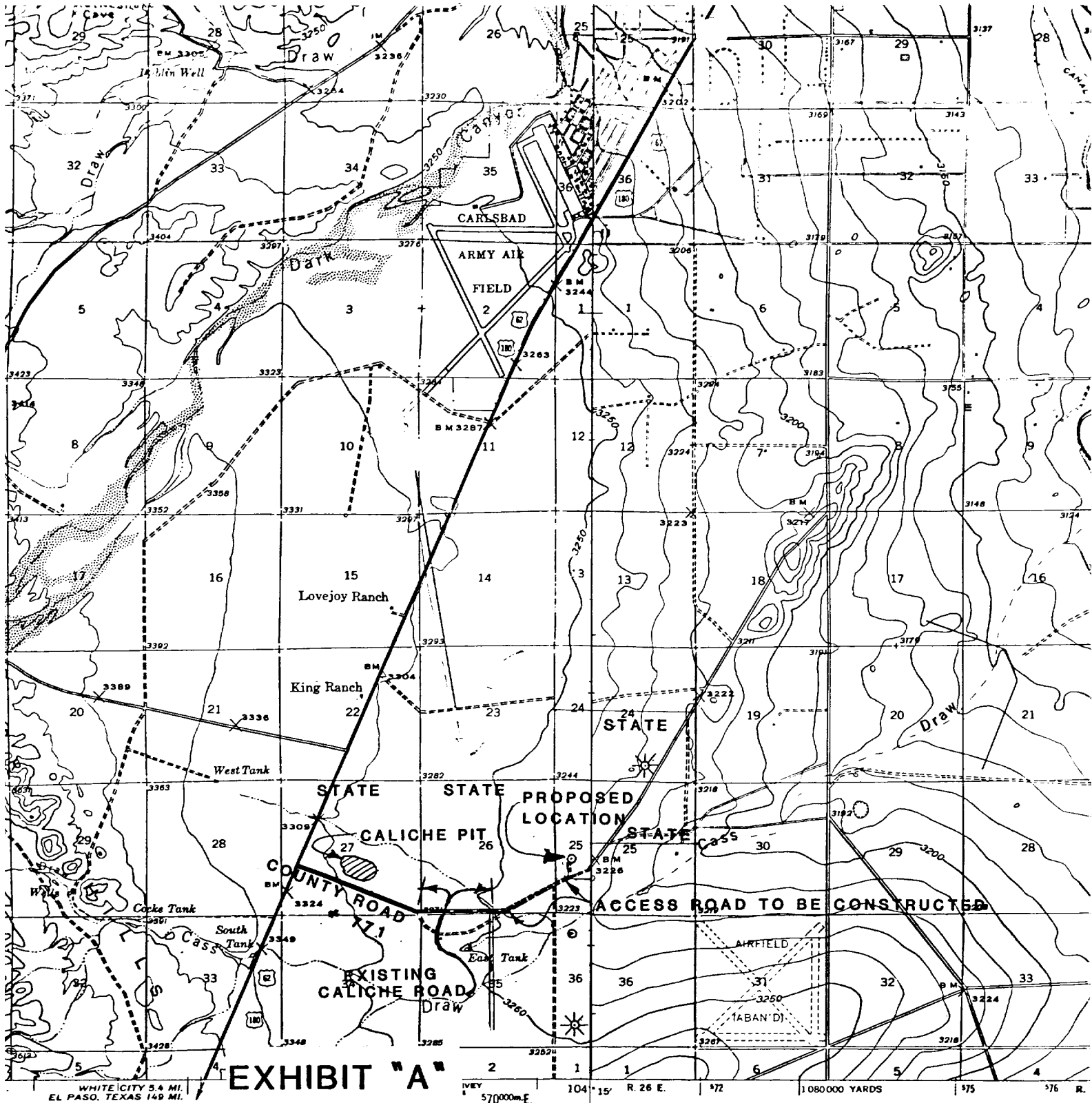
<u>STRING</u>	<u>SIZE</u>	<u>WEIGHT/GRADE</u>	<u>CONDITION</u>	<u>DEPTH INTERVAL</u>
Conductor	13-3/8"	54.5#/K-55	New	0- 40'
Surface	8-5/8"	24#/K-55	New	0- 600'
Production	5-1/2"	14#/K-55	New	0-5000'
Production	5-1/2"	15.5#/K-55	New	5000-7000'
Production	5-1/2"	17#/K-55	New	7000-8000'
Tubing	2-7/8"	6.5#/J-55	New	0-8000'

5. Minimum specifications for pressure control equipment:

- A. Wellhead equipment - Threaded type, 2000 psi WP for 8-5/8" x 5-1/2" casing program with 2-7/8" tubing hanger.
- B. Blowout preventers - Refer to attached drawings and lists of equipment titled "Type II-C" for description of BOP stacks and choke manifold.
- C. BOP control unit - Unit will be hydraulically operated and have at least two control stations.
- D. Testing - When installed on 8-5/8" surface casing the Type II-C BOP stack will be tested to a low pressure (200-300 psi) and to a high pressure of 2000 psi. Casing rams will be tested in a like manner. An operational test of the blowout preventers will be performed on each round trip, (but not more than once each day); the annular and pipe rams preventers will be closed on drill pipe and the blind rams will be closed while pipe is out of the hole.

MIDLAND DRILLING ORGANIZATION BLOWOUT PREVENTER SPECIFICATION TYPE II - C





EXXON COMPANY, USA

SIMASKO FED. #1

NW SW SECTION 25, T 23 S, R 26 E
EDDY COUNTY, N.M.

Topography by Max J. Gleissner, T. T. Ranney,
M. C. McClellan, C. E. Ish,
R. E. Mann, N. B. Wright, and F. C. River Survey
Surveyed in 1935 and 1939
Red tint indicates areas in which
only landmark buildings are shown
ROAD CLASSIFICATION
Heavy-duty 4 LANE 6 LANE Light-duty
Medium-duty 4 LANE 6 LANE Unimproved dirt
U S Route State Route
UTM GRID AND 15
DECLINATION AT
Revisions shown in purple
taken 1971. This information
Purple tint indicates extension

TOPOGRAPHIC LAND SURVEYORS
908 WEST WALL
MIDLAND, TEXAS 79701
682-1653

A' ←

RESERVE PIT
150' x 150' x 6'DE

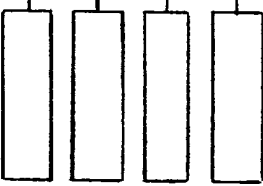
W A

②

TRASH

MUD PITS

FRAC. EQUIP.



PRODUCTION FA

140' TRAILER ON B

④

LSE. NO. NM17572

EXXON COMPANY, U.S.A. (a division of Exxon Corporation)
PRODUCTION DEPARTMENT

A

226E

DATE 1-17-83

JOB NO.

FILE NO.

SCALE 1" = 50'

W-B-1809