

MEXICO OIL CONSERVATION COMMISSION
WELL LOCATION AND ACREAGE DEDICATION PLAT

RECEIVED

Form C-122
Supersedes C-128
Effective 1-1-55

MAR 28 1983

All distances must be from the outer boundaries of the Section

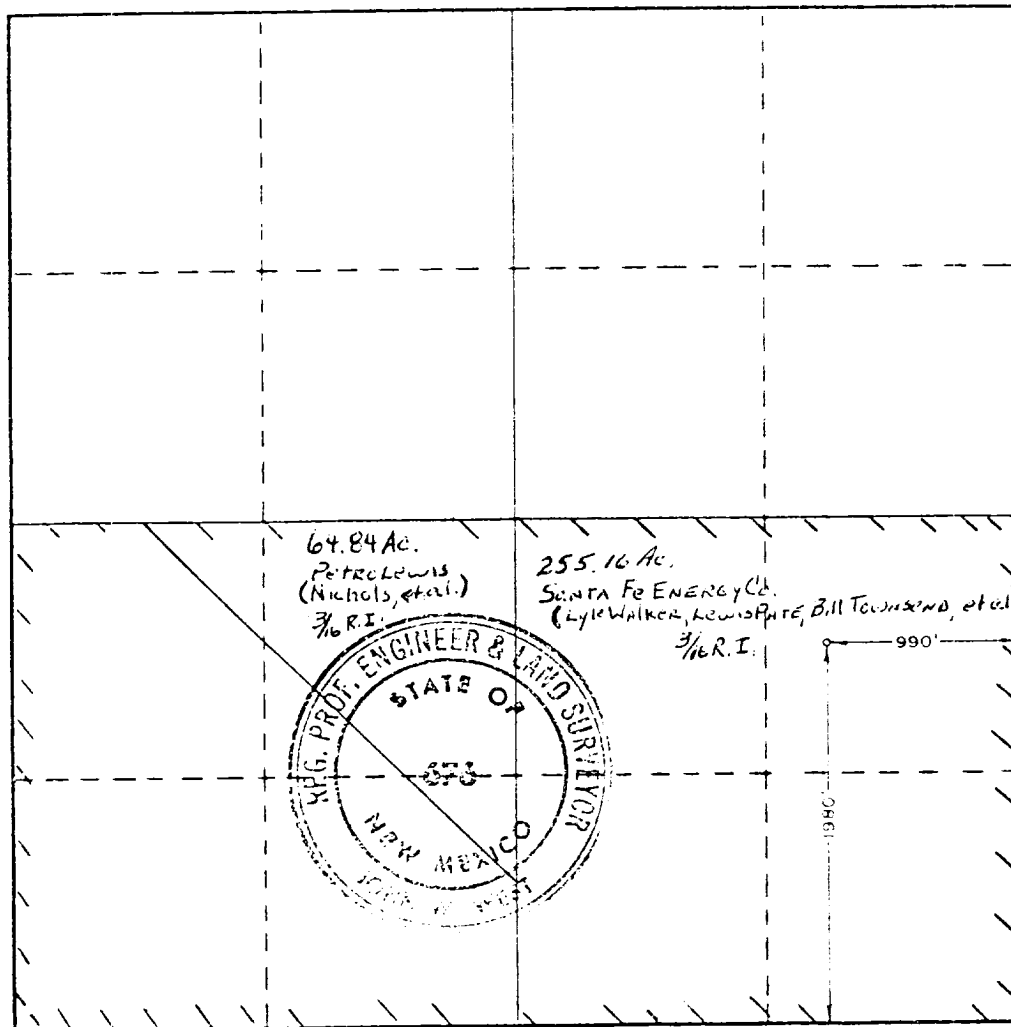
Operator SANTA FE ENERGY COMPANY		Lease WALKER			Well No. O. C. D. 1	
Unit Letter I	Section 21	Township 22 SOUTH	Range 27 EAST	County ARTESIA, OFFICE 1		
Actual Footage Location of Well: 1980 feet from the SOUTH line and 990 feet from the EAST line						
Ground Level Elev. 3109.8'	Producing Formation Morrow		Pool Undes. East Carlsbad Morrow		Dedicated Acreage: 320 Acres	

1. Outline the acreage dedicated to the subject well by colored pencil or hatchure marks on the plat below.
2. If more than one lease is dedicated to the well, outline each and identify the ownership thereof (both as to working interest and royalty).
3. If more than one lease of different ownership is dedicated to the well, have the interests of all owners been consolidated by communitization, unitization, force-pooling, etc?

☒ Yes ☐ No If answer is "yes," type of consolidation Unitization

If answer is "no," list the owners and tract descriptions which have actually been consolidated. (Use reverse side of this form if necessary.)

No allowable will be assigned to the well until all interests have been consolidated (by communitization, unitization, forced-pooling, or otherwise) or until a non-standard unit, eliminating such interests, has been approved by the Commission.



CERTIFICATION

I hereby certify that the information contained herein is true and complete to the best of my knowledge and belief.

Name Michael R. Burton
Position Senior Drilling Engineer
Company Santa Fe Energy Company
Date February 25, 1983

I hereby certify that the well location shown on this plat was plotted from field notes of actual surveys made by me or under my supervision, and that the same is true and correct to the best of my knowledge and belief.

Date Surveyed 2/23/83
Registered Professional Engineer and/or Land Surveyor

John W. West
Certificate No. JOHN W. WEST NO. 676

0 330 660 990 1320 1650 1980 2310 2640 2970 3300 3630 3960 4290 4620 4950 5280 5610 5940 6270 6600

133/8 e 540

95/8 e 5354

5 1/2 e 11,960

Penn 10,005

wc 9088

2nd BS ± 7000

BS e 5466

PBTDE 10,441

CIBPE 9450 w/100' cap

Cut + Pull 5 1/2 e ± 8100'

Set plug e 8100

Set plug 6154 - 5354

Perfs 9583 - 9873

Penn (1) 25 SX e 10,055

Perfs (2) CIBPE 9450 w/ cap

wc (3) 25 SX e 9140

(4) Cut + pull 5 1/2 e 8100'

Stub (5) 25 SX e 8150'

Shoe 95/8 (6) 6154 - 5354 + test 95/8" csq