

NEW MEXICO OIL CONSERVATION COMMISSION
WELL LOCATION AND ACREAGE DEDICATION PLAT

RECEIVED

Form O-102
Supersedes O-126
Effective 1-1-65

All distances must be from the outer boundaries of the Section

MAR - 3 1983

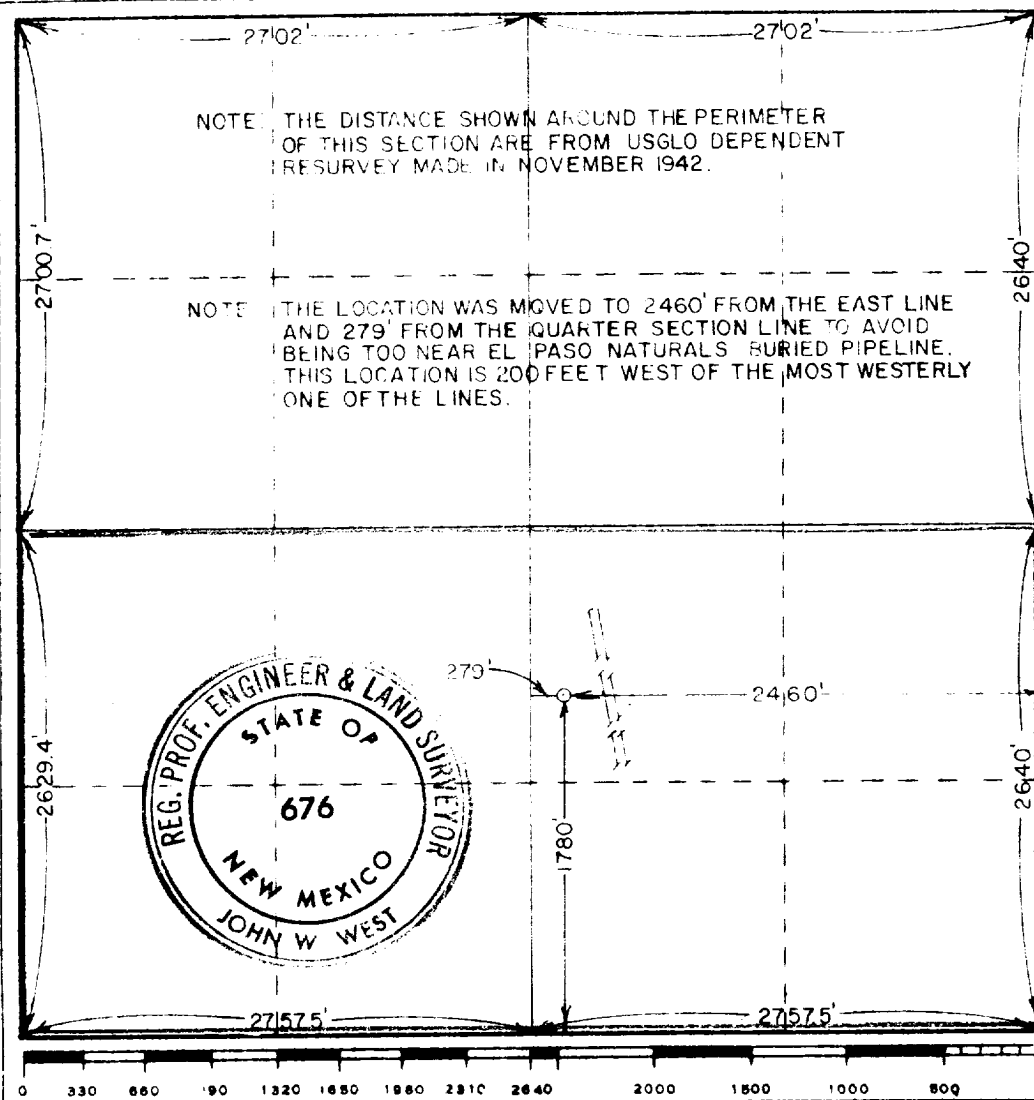
Operator POGO PRODUCTION CO.		Lease Lightfoot		Well No. 1	
Tract Letter J	Section 14	Township 24 South	Range 28 East	County Midland	
Actual Footage Location of Well: 1780 feet from the South line and 2460 feet from the East line					
Ground Level Elev. 2977.2	Producing Formation Morrow	Pool Undesignated		Dedicated Acreage: 331.9 Acres	

1. Outline the acreage dedicated to the subject well by colored pencil or hatchure marks on the plat below.
2. If more than one lease is dedicated to the well, outline each and identify the ownership thereof (both as to working interest and royalty) **See Attachments A & B.**
3. If more than one lease of different ownership is dedicated to the well, have the interests of all owners been consolidated by communitization, unitization, force-pooling, etc?

☐ Yes ☒ No If answer is "yes," type of consolidation _____

If answer is "no," list the owners and tract descriptions which have actually been consolidated. (Use reverse side of this form if necessary) **Unitization Agreement is being circulated for approval.**

No allowable will be assigned to the well until all interests have been consolidated (by communitization, unitization, forced-pooling, or otherwise) or until a non-standard unit, eliminating such interests, has been approved by the Commission.



CERTIFICATION

I hereby certify that the information contained herein is true and complete to the best of my knowledge and belief.

B. J. Williams

Name
B. J. Williams

Position
Division Operations Manager

Company
Pogo Producing Company

Date
March 7, 1983

I hereby certify that the well location shown on this plat was plotted from field notes of actual surveys made by me or under my supervision, and that the same is true and correct to the best of my knowledge and belief.

Date Surveyed
2/26/1983

Registered Professional Engineer and Land Surveyor

John W. West

Certificate No
JOHN W. WEST #676