

NM OIL CONS. COMMISSION
Drawer DD
Artesia, NM 88210
UNITED STATES
DEPARTMENT OF THE INTERIOR
GEOLOGICAL SURVEY

SUBMIT IN TRIPLIC/
(Other instructions on
reverse side)

Form approved.
Budget Bureau No. 42-R1425.

30-015-2457

9/8/83
per Chas. Herring
8/12/83

APPLICATION FOR PERMIT TO DRILL, DEEPEN, OR PLUG BACK

1a. TYPE OF WORK

DRILL ☒

DEEPEN ☐

PLUG BACK ☐

b. TYPE OF WELL

OIL WELL ☐

GAS WELL ☐

OTHER WaterSourceWell ☒

SINGLE ZONE ☒

MULTIPLE ZONE ☐

2. NAME OF OPERATOR

Amoco Production Company ✓

3. ADDRESS OF OPERATOR

P. O. Box 68, Hobbs, New Mexico 88240

4. LOCATION OF WELL (Report location clearly and in accordance with any State requirements)

At surface 2160' FSLX 1960' FEL (Unit J, NW/4, SE/4)

At proposed prod. zone

14. DISTANCE IN MILES AND DIRECTION FROM NEAREST TOWN OR POST OFFICE*

7.5 miles East of Carlsbad

15. DISTANCE FROM PROPOSED*

LOCATION TO NEAREST PROPERTY OR LEASE LINE, FT. (Also to nearest drlg. unit line, if any)

18. DISTANCE FROM PROPOSED LOCATION* TO NEAREST WELL, DRILLING, COMPLETED, OR APPLIED FOR, ON THIS LEASE, FT.

16. NO. OF ACRES IN LEASE

19. PROPOSED DEPTH

300'

17. NO. OF ACRES ASSIGNED TO THIS WELL

N/A

20. ROTARY OR CABLE TOOLS

Rotary

21. ELEVATIONS (Show whether DF, RT, GR, etc.)

3084.1' GL

22. APPROX. DATE WORK WILL START*

Early October

23. PROPOSED CASING AND CEMENTING PROGRAM

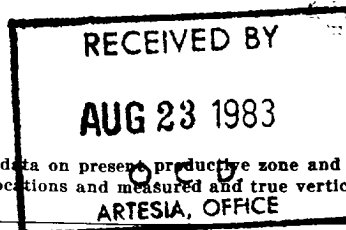
SIZE OF HOLE	SIZE OF CASING	WEIGHT PER FOOT	SETTING DEPTH	QUANTITY OF CEMENT
11" or 12-1/4"	9-5/8" 8-5/8"	32# 32.3	400'	Circulate to surface
7-7/8" 8-3/4"	7 5-1/2"	15.5# 20	3300'	Tieback to 8-5/8" 9-5/8"

Propose to drill and equip the subject well in the Delaware Formation. After reaching TD, logs will be run and evaluated. Perforate as necessary in establishing water production.

BOP Diagram Attached.
Archaeological Survey Attached.

Mud Program: 0- 400' Fresh water and native mud.
400- TD Brine water and native mud.

0+6-BLM, R 1-HOU, R.E.Ogden, Rm 21.150 1-F.J.Nash, HOU, Rm. 4.206 1-CMH



IN ABOVE SPACE DESCRIBE PROPOSED PROGRAM: If proposal is to deepen or plug back, give data on present productive zone and proposed new productive zone. If proposal is to drill or deepen directionally, give pertinent data on subsurface locations and measured and true vertical depths. Give blowout preventer program, if any.

24.

SIGNED

Charles M. Herring

TITLE Administrative Analyst

DATE 8-9-83

(This space for Federal or State office use)

PERMIT NO.

APPROVAL DATE

APPROVED BY

A. A. Lopez

TITLE

DATE

8/19/83

CONDITIONS OF APPROVAL, IF ANY:

Posted 8-26-83
8-26-83

NEW MEXICO OIL CONSERVATION COMMISSION
WELL LOCATION AND ACREAGE DEDICATION PLAT

Form C-102
Supersedes C-128
Effective 1-1-65

All distances must be from the outer boundaries of the Section

Operator Amoco Production Company			Lease Old Indian Draw Unit WSW Alt.no. 1		Well No. 37
Tract Letter J	Section 18	Township 22 South	Range 28 East	County Eddy	
Actual Footage Location of Well: 2160 feet from the south line and 1960 feet from the east line					
Ground Level Elev. 3084.1'	Producing Formation Delaware		Pool Indian Draw Delaware		Dedicated Acreage: N/A Acres

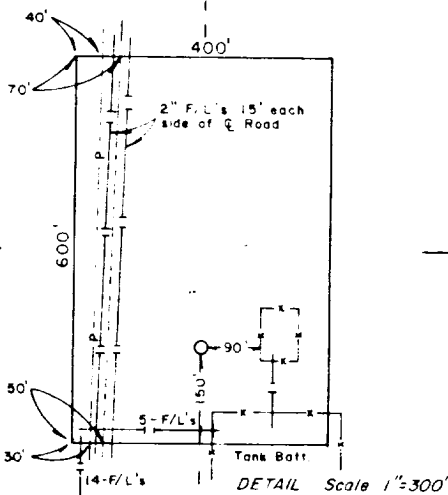
1. Outline the acreage dedicated to the subject well by colored pencil or hachure marks on the plat below.
2. If more than one lease is dedicated to the well, outline each and identify the ownership thereof (both as to working interest and royalty).
3. If more than one lease of different ownership is dedicated to the well, have the interests of all owners been consolidated by communitization, unitization, force-pooling, etc?

☐ Yes ☐ No If answer is "yes," type of consolidation _____

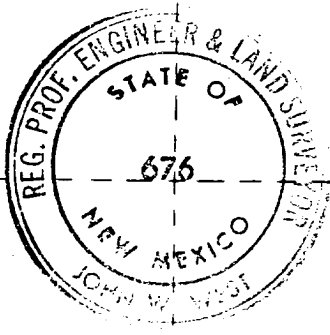
If answer is "no," list the owners and tract descriptions which have actually been consolidated. (Use reverse side of this form if necessary.) _____

No allowable will be assigned to the well until all interests have been consolidated (by communitization, unitization, forced-pooling, or otherwise) or until a non-standard unit, eliminating such interests, has been approved by the Commission.

NOTE: A 400' x 600' area around location was M-Scoped. Pipelines found are as shown.



SEE
DETAIL
ABOVE



CERTIFICATION

I hereby certify that the information contained herein is true and complete to the best of my knowledge and belief.

Charles M. Lerring
Position
Administrative Analyst

Company
Amoco Production Company

Date
8-9-83

I hereby certify that the well location shown on this plat was plotted from field notes of actual surveys made by me or under my supervision, and that the same is true and correct to the best of my knowledge and belief.

Date Surveyed
July 7, 1983

Registered Professional Engineer
and Land Surveyor

John W. West

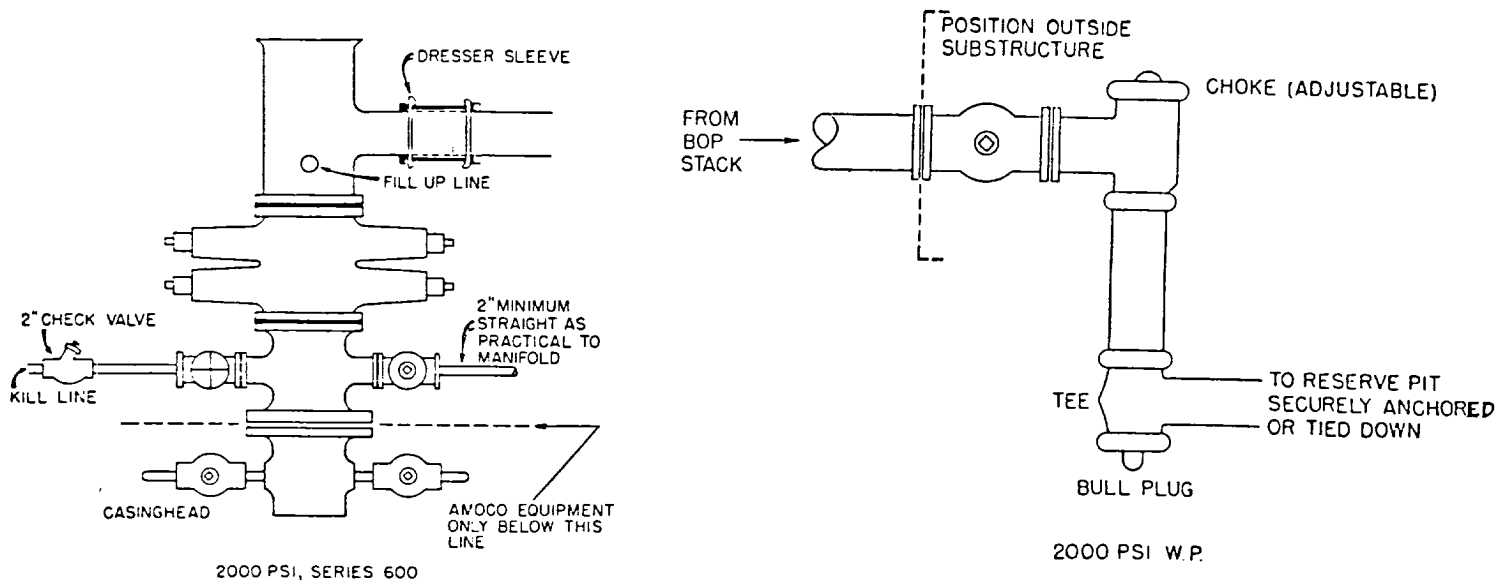
Certificate No **JOHN W. WEST, 676**
RONALD J. EIDSON, 3239

330 660 990 1320 1650 1980 2310 2640 2000 1500 1000 500 0

ANDARO 2000 PSI W.P. BOP STACK

1. Blow-out preventers may be manually operated.
2. All equipment must be in good condition, 2,000 psi W.P. (4,000 psi test) minimum.
3. Bell nipple above blow-out preventer shall be same size as casing being drilled through.
4. Kelly cock to be installed on kelly.
5. Full opening safety valve 2,000 psi w.p. (4,000 psi test) minimum must be available on rig floor at all times with proper connection or subs to fit any tool joint in string.
6. Spool or cross may be eliminated if connections are available in the lower part of the blow-out preventer body.
7. Double or space saver type preventers may be used in lieu of two single preventers.
8. BOP rams to be installed as follows:
 - Top preventer - Drill pipe or casing rams
 - Bottom preventer - Blind rams

*Amoco District Superintendent may reverse location of rams.
9. Extensions and hand wheels to be installed and braced at all times.
10. Manifold valves may be gate or plug metal to metal seal 2" minimum.



Attachment to "Application for Permit to Drill", Form 9-331 C

1. Location

See attached Form C-102

2. Elevation

See attached Form C-102

3. Geologic name of surface formation.

4. Type of drilling tools and associated equipment to be utilized.

See Form 9-331 C

5. Proposed drilling depth.

See Form 9-331 C

6. Estimated tops of important geologic markers.

Delaware 2370'

7. Estimated depths at which anticipated water, oil, gas or other mineral-bearing formations are expected to be encountered.

Delaware 2370'

8. Proposed casing program, including size, grade, and weight of each string and whether it is new or used.

<u>Depth</u>	<u>Size</u>	<u>Weight</u>	<u>Grade</u>	<u>New or Used</u>
400' <i>9-5/8</i>	<i>8-5/8"</i>	<i>32# 32.3</i>	H-40	new
3300' <i>7</i>	<i>5-1/2"</i>	<i>15.5# 20</i>	K-55	new

9. Proposed cementing program.

9-5/8 *8-5/8"* Circulate to surface.
7 *5-1/2"* Tie back to *8-5/8"*. *9-5/8*

10. Blowout Preventer Program is attached.

11. Type and characteristics of the proposed circulating medium or mediums to be employed for rotary drilling, and the quantities and types of mud and weighting material to be maintained.

0 - 400 Fresh water and native mud.

400-TD Brine water and native mud.

12. Testing, logging and coring programs to be followed with provisions made for required flexibility.

0 - TD GR

2200 - TD GR-Sonic

2200 - TD GR-Dual Laterolog-Micro SFL

2200 - TD GR-CNL-FDC-EPT

13. Any anticipated abnormal pressure or temperatures expected to be encountered or potential hazards, such as hydrogen sulfide gas, along with plans for mitigating such hazards.

None expected.

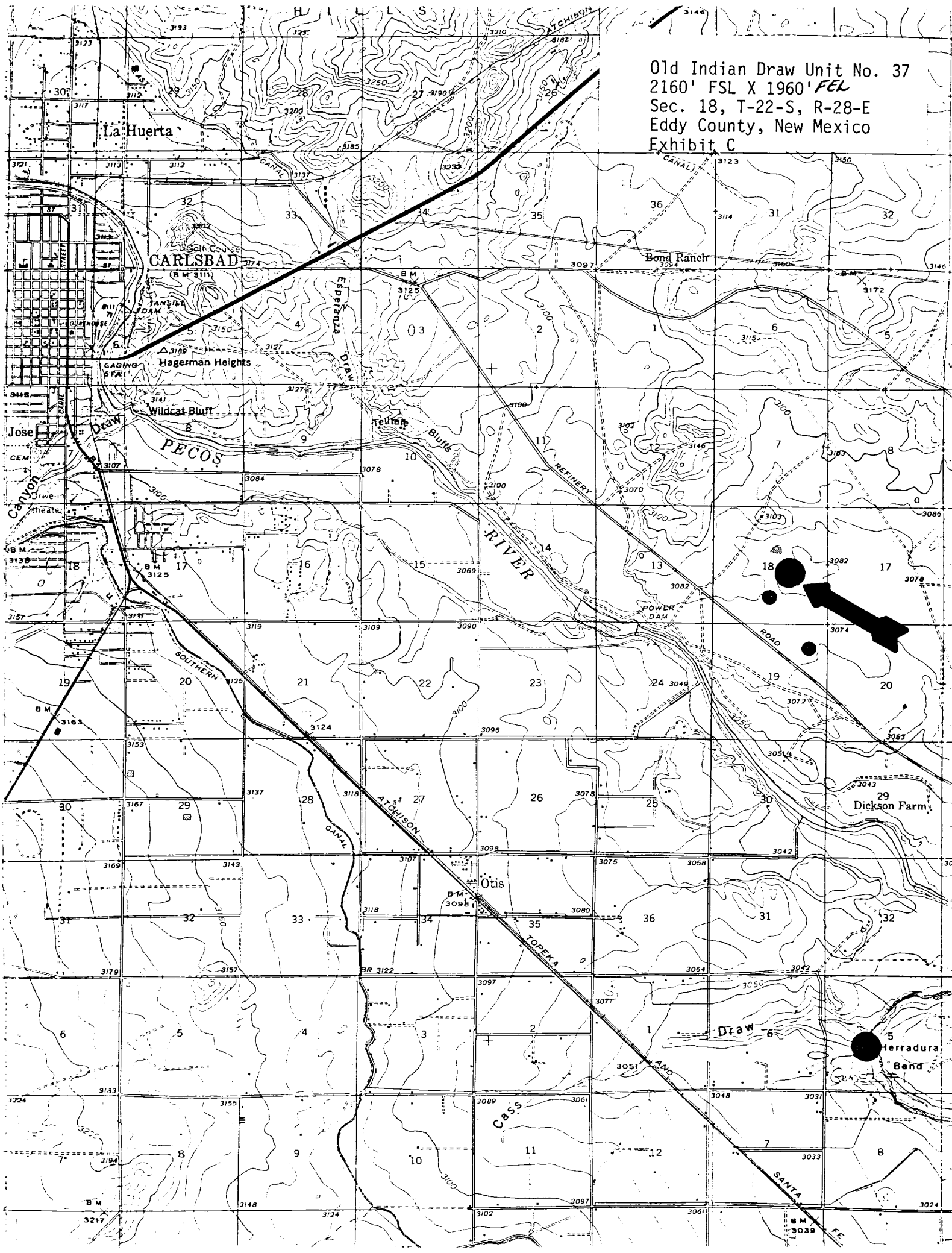
14. Anticipated starting date and duration of operation.

Anticipate spudding in early October, with a duration of 30 days.

15. Other facets of the proposed operation operator wishes to point out for the Geological Survey's consideration of the application.

Request exemptions from the painting stipulations of Sec. 102 (a) (8) of the "Federal Land Policy and Management Act of 1976" to paint any tanks, separators, and treaters required for the production of this well, Amoco's standard gray color. If a pumping unit is required for the continued production of this well, it will be painted black with orange safety color coding which conforms with your current painting guidelines.

Old Indian Draw Unit No. 37
2160' FSL X 1960' FEL
Sec. 18, T-22-S, R-28-E
Eddy County, New Mexico
Exhibit C



Old Indian Draw Unit No. 37
2160' FSL X 1960' *FEL*
Sec. 18, T-22-S, R-28-E
Eddy County, New Mexico
Exhibit D

