

NEW MEXICO OIL CONSERVATION COMMISSION  
WELL LOCATION AND ACREAGE DEDICATION PLAT

Form C-102  
Supersedes C-128  
Effective 1-1-65

All distances must be from the outer boundaries of the Section

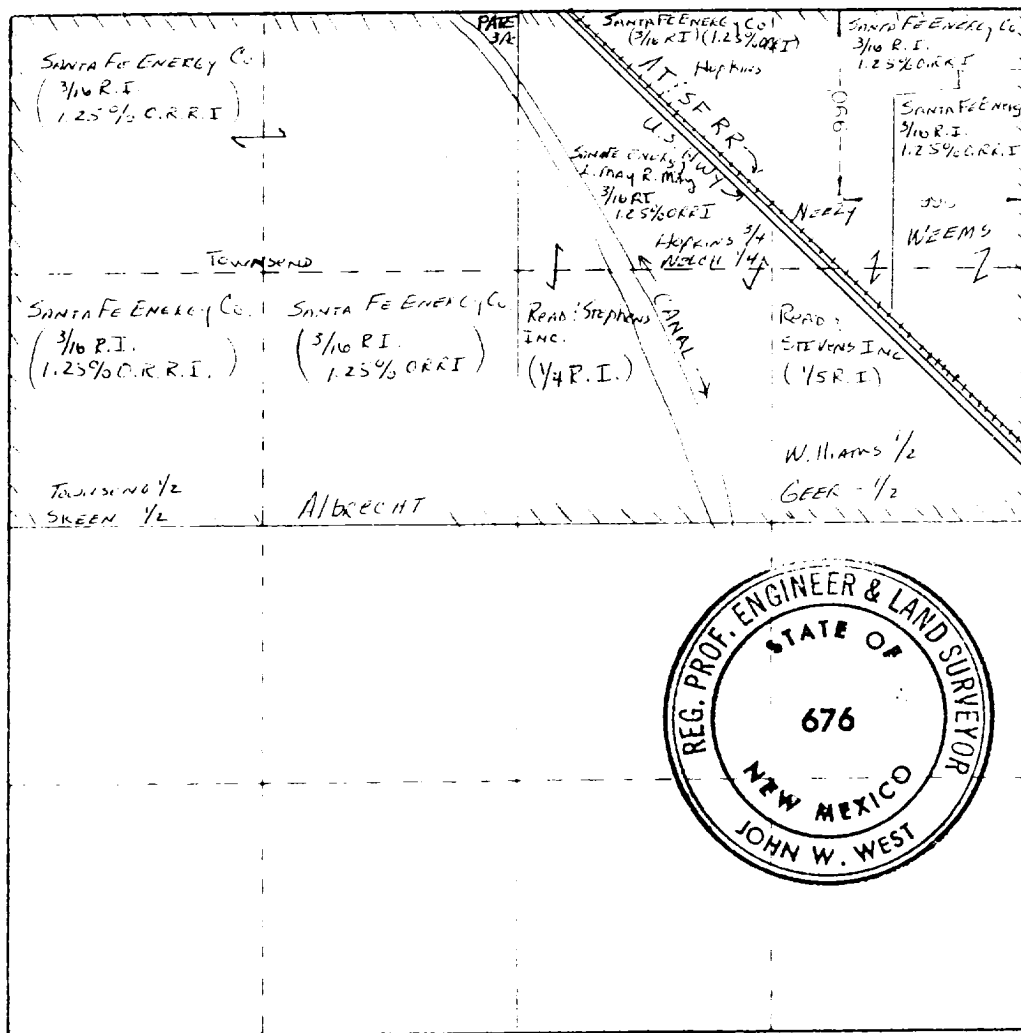
Santa Fe Energy Company			Lease Neeley		Acres 1
Section A	28	Township 22 South	Range 27 East	County Eddy County	
Location of Well: 990 feet from the North line and 990 feet from the East line					
Spot Elev. 3116.7	Producing Formation Undesignated South Carlsbad Morrow	Pool	Described Acreage 320 Acres		

- Outline the acreage dedicated to the subject well by colored pencil or hachure marks on the plat below.
- If more than one lease is dedicated to the well, outline each and identify the ownership thereof (both as to working interest and royalty).
- If more than one lease of different ownership is dedicated to the well, have the interests of all owners been consolidated by communitization, unitization, force-pooling, etc?

☒ Yes ☐ No If answer is "yes," type of consolidation Designation of consolidated gas leasehold estate

If answer is "no," list the owners and tract descriptions which have actually been consolidated. (Use reverse side of this form if necessary.)

No allowable will be assigned to the well until all interests have been consolidated (by communitization, unitization, force-pooling, or otherwise) or until a non-standard unit, eliminating such interests, has been approved by the Commission.



CERTIFICATION

I hereby certify that the information contained herein is true and complete to the best of my knowledge and belief

Michael R. Burton

Senior Drilling Engineer

Santa Fe Energy Company

August 11, 1983

I hereby certify that the well location shown on this plat was plotted from field notes of actual surveys made by me or under my supervision and that the same is true and correct to the best of my knowledge and belief

August 9, 1983

Certificate No. JOHN W. WEST, 676  
RONALD J. EIDSON, 3239