

N MEXICO OIL CONSERVATION COMMISSION
WELL LOCATION AND ACREAGE DEDICATION PLAT

Form C-102
Supersedes C-128
Effective 1-1-65

All distances must be from the outer boundaries of the Section

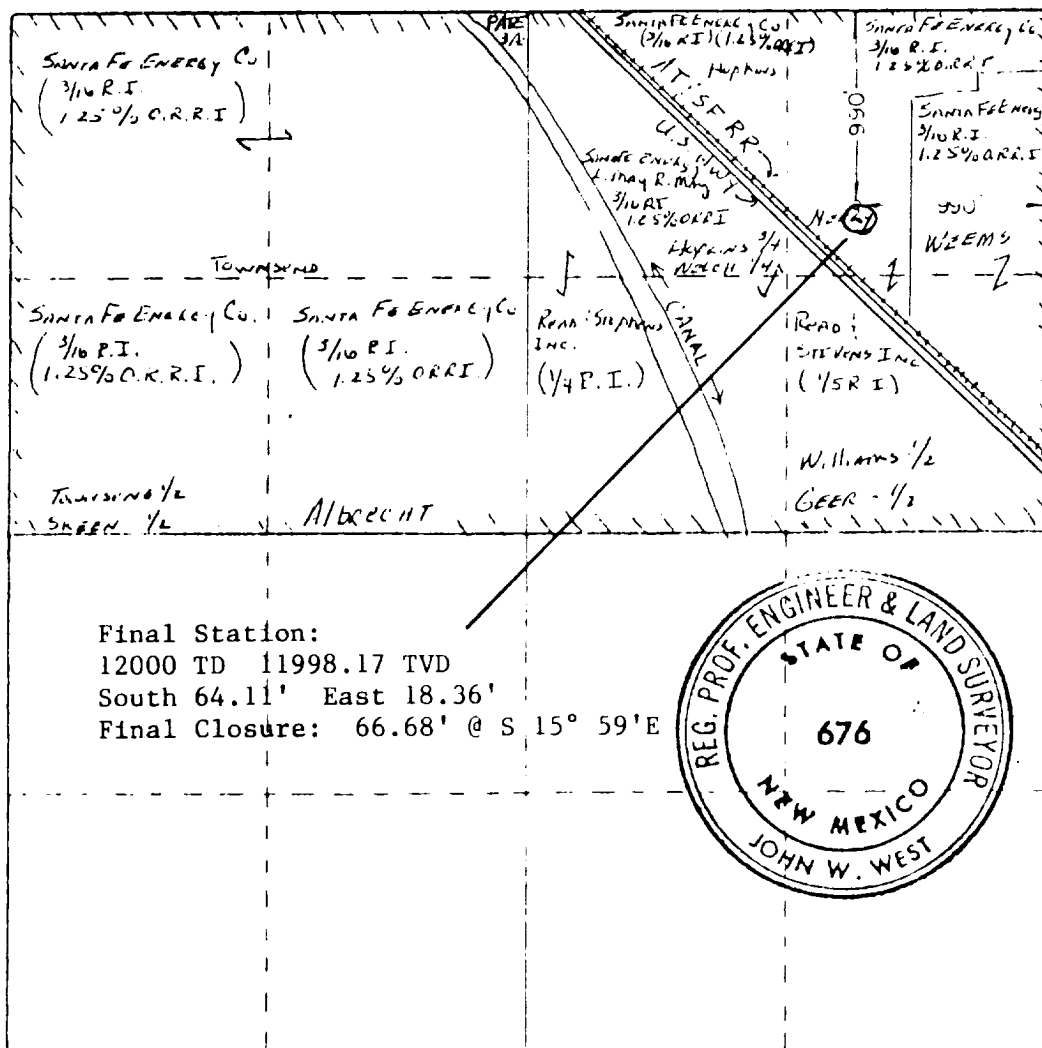
Operator Santa Fe Energy Company			Lease Neeley		Well No. 1
Section A	Section 28	Township 22 South	Range 27 East	County Eddy County	
Location of Well: <div style="display: flex; justify-content: space-between;"> 990 feet from the North line and 990 feet from the East line </div>					
Well Level Elev. 3116.7	Producing Formation <i>Morrow</i>	Pool Undesignated South Carlsbad Morrow		Deviated Angle: 320	

- Outline the acreage dedicated to the subject well by colored pencil or hatchure marks on the plat below.
- If more than one lease is dedicated to the well, outline each and identify the ownership thereof (both as to working interest and royalty).
- If more than one lease of different ownership is dedicated to the well, have the interests of all owners been consolidated by communitization, unitization, force-pooling, etc?

☒ Yes ☐ No If answer is "yes," type of consolidation Designation of consolidated gas leasehold estate

If answer is "no," list the owners and tract descriptions which have actually been consolidated. (Use reverse side of this form if necessary.)

No allowable will be assigned to the well until all interests have been consolidated (by communitization, unitization, forced-pooling, or otherwise) or until a non-standard unit, eliminating such interests, has been approved by the Commission.



CERTIFICATION

I hereby certify that the information contained herein is true and complete to the best of my knowledge and belief.

Michael R. Burton
Michael R. Burton

Senior Drilling Engineer

Santa Fe Energy Company

August 11, 1983

I hereby certify that the well location shown on this plat was plotted from field notes of actual surveys made by me or under my supervision, and that the same is true and correct to the best of my knowledge and belief.

August 9, 1983

Registered Professional Engineer
and Professional Surveyor

John W. West
John W. West

Certificate No. JOHN W. WEST.

676