

MEXICO OIL CONSERVATION COMMISSION
WELL LOCATION AND ACREAGE DEDICATION PLAT

Form C-102
Supersedes C-128
Effective 1-1-65

All distances must be from the outer boundaries of the Section

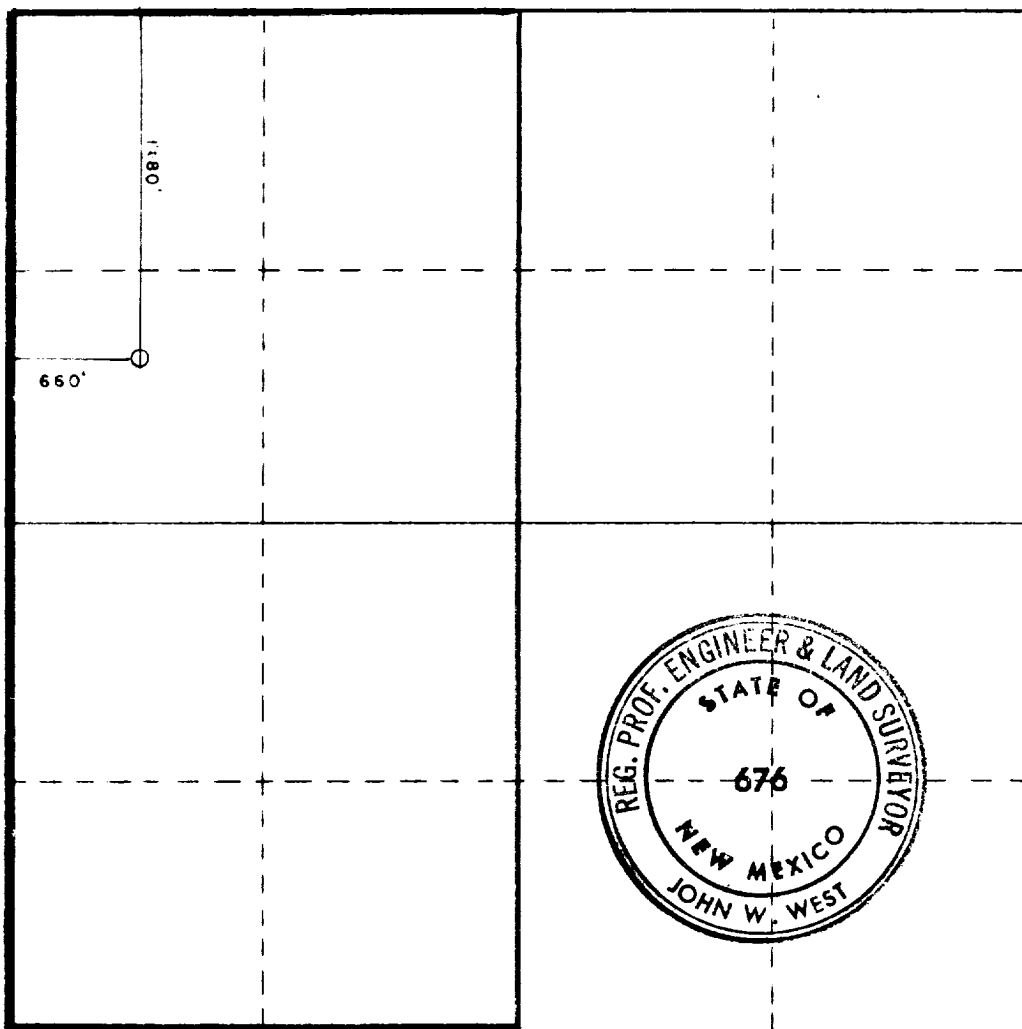
Operator JAKE L. HAMON		Lease UNION 35 FEDERAL		Well No. 1
Section Letter E	Section 35	Township 22 SOUTH	Range 28 EAST	County EDDY
Well Location of Well:				
1780 feet from the NORTH line and		660 feet from the WEST line		
Ground Level Elev. 3064.1	Producing Formation Atoka and Morrow	Pool Dublin Ranch-Atoka Dublin Ranch-Morrow	Dedicated Acreage: 320 Acres	

1. Outline the acreage dedicated to the subject well by colored pencil or hachure marks on the plat below.
2. If more than one lease is dedicated to the well, outline each and identify the ownership thereof (both as to working interest and royalty).
3. If more than one lease of different ownership is dedicated to the well, have the interests of all owners been consolidated by communitization, unitization, force-pooling, etc?

☐ Yes ☐ No If answer is "yes," type of consolidation _____

If answer is "no," list the owners and tract descriptions which have actually been consolidated. (Use reverse side of this form if necessary.) _____

No allowable will be assigned to the well until all interests have been consolidated (by communitization, unitization, forced-pooling, or otherwise) or until a non-standard unit, eliminating such interests, has been approved by the Commission.



CERTIFICATION

I hereby certify that the information contained herein is true and complete to the best of my knowledge and belief.

Name
B. W. Cozart
Position
Drilling Foreman
Company
Jake L. Hamon

Date
November 16, 1983

I hereby certify that the well location shown on this plat was plotted from field notes of actual surveys made by me or under my supervision, and that the same is true and correct to the best of my knowledge and belief.

Date Surveyed
OCTOBER 28, 1983

Registered Professional Engineer and/or Land Surveyor

John W. West
Certificate No. **JOHN W. WEST, 676**
RONALD J. EIDSON, 3239

0 330 660 990 1320 1650 1980 2310 2640 2000 1500 1000 500