

Santa Fe Energy Company



500 West Ohio
Midland, Texas 79701
915/687-3551

October 13, 1983

Re: Waiver Request

El Paso Exploration Co.
1800 Wilco Bldg.
Midland, TX 79701

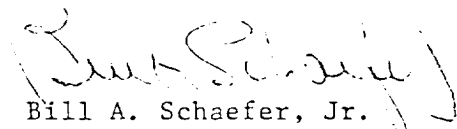
Attn: Don Janssen

Gentlemen:

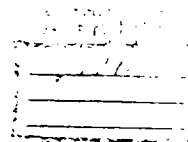
This is to inform you of our Request for Administrative Approval of Santa Fe Energy Company's unorthodox location for a well to be drilled 990' FNL and 990' FWL in Section 18, Township 23, South, Range 28 East, Eddy County, New Mexico. (Plat attached, for your convenience)

We would appreciate your responding to this Waiver as quickly as possible as we plan to spud the well on or before December 1, 1983. Please send one executed copy to: Division Director, Oil Conservation Division, Energy and Minerals Department, State of New Mexico, P.O. Box 2088, Santa Fe, New Mexico 87501, and return the copy so marked to us.

Yours truly,


Bill A. Schaefer, Jr.
Exploration Manager

BY SIGNATURE HERETO, WE DO APPROVE THIS WAIVER REQUEST:



Attorney-in-Fact Date _____

Attchmt
/efw

