

NEW MEXICO OIL CONSERVATION COMMISSION
WELL LOCATION AND ACREAGE DEDICATION PLAT

Form O-112
Superseded 1-1-78
Effective 1-1-78

All distances must be from the outer boundaries of the Section

Operator SANTA FE ENERGY CO.			Lease CARRASCO		Acct. No. 1
Well Identifier D	Section 18	Township 23S	Range 28E	County EDDY	
Section Boundary Location of Well:					
990		NORTH	990		WEST
feet from line		line and	feet from line		feet
Ground Level Elev. 3059.0	Producing Formation <i>Morrow</i>		Pool North Loving Morrow	Estimated Acreage 320	

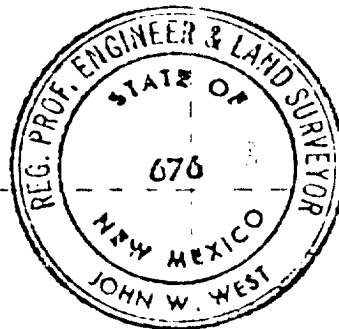
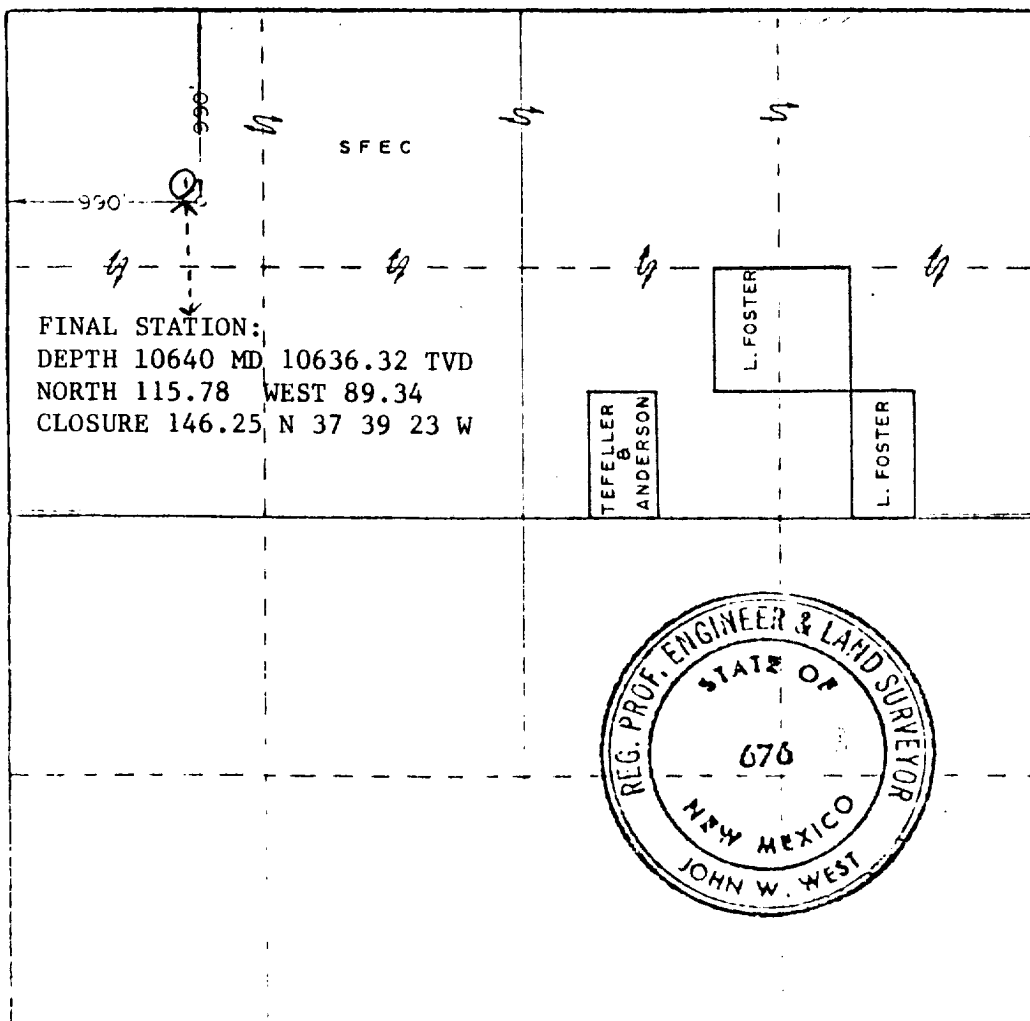
1. Outline the acreage dedicated to the subject well by colored pencil or hatchure marks on the plat below.
2. If more than one lease is dedicated to the well, outline each and identify the ownership thereof (both as to working interest and royalty).
3. If more than one lease of different ownership is dedicated to the well, have the interests of all owners been consolidated by communitization, unitization, force-pooling, etc?

Designation of Consolidated
Gas Leasehold Estate

☒ Yes ☐ No If answer is "yes," type of consolidation

If answer is "no," list the owners and tract descriptions which have actually been consolidated. (Use reverse side of this form if necessary.)

No allowable will be assigned to the well until all interests have been consolidated (by communitization, unitization, forced-pooling, or otherwise) or until a non-standard unit, eliminating such interests, has been approved by the Commission.



CERTIFICATION

I hereby certify that the information contained herein is true and complete to the best of my knowledge and belief.

MICHAEL R. BURTON

Michael R. Burton

Sr. Drilling Engineer

SANTA FE ENERGY COMPANY

10-28-83

I hereby certify that the well location shown on this plat was plotted from field notes of actual surveys made by me or under my supervision and that the same is true and correct to the best of my knowledge and belief.

10/11/83

Registered Professional Engineer

No. 17,131 License

John W. West

Certificate No. **JOHN W. WEST**
RONALD J. ELDSON