

UNITED STATES  
DEPARTMENT OF THE INTERIOR  
BUREAU OF LAND MANAGEMENT

APPLICATION FOR PERMIT TO DRILL, DEEPEN, OR PLUG BACK

1a. TYPE OF WORK

DRILL ☒

APR 16 1984

b. TYPE OF WELL

OIL  
WELL ☒

GAS  
WELL ☐

OTHER ☐ O. C. D.

SINGLE  
ZONE ☒

MULTIPLE  
ZONE ☐

2. NAME OF OPERATOR

NED MADDOX

3. ADDRESS OF OPERATOR

310 C & K Petroleum Building, Midland, Texas 79702

4. LOCATION OF WELL (Report location clearly and in accordance with any State requirements.)

At surface

660' FSL & 810' FEL SE/4 SE/4 Unit letter P

At proposed prod. zone

Same

14. DISTANCE IN MILES AND DIRECTION FROM NEAREST TOWN OR POST OFFICE\*

2 miles west and 1 mile south of Malaga, New Mexico

15. DISTANCE FROM PROPOSED\*

LOCATION TO NEAREST  
PROPERTY OR LEASE LINE, FT.  
(Also to nearest drig. unit line, if any)

660'

16. NO. OF ACRES IN LEASE

320

17. NO. OF ACRES ASSIGNED  
TO THIS WELL

40

18. DISTANCE FROM PROPOSED LOCATION\*

TO NEAREST WELL, DRILLING, COMPLETED,  
OR APPLIED FOR, ON THIS LEASE, FT.

N/A

19. PROPOSED DEPTH

6500'

20. ROTARY OR CABLE TOOLS

Rotary

21. ELEVATIONS (Show whether DF, RT, GR, etc.)

3054.0' GR

22. APPROX. DATE WORK WILL START\*

April 20, 1984

23. PROPOSED CASING AND CEMENTING PROGRAM

SIZE OF HOLE	SIZE OF CASING	WEIGHT PER FOOT	SETTING DEPTH	QUANTITY OF CEMENT
17 1/2"	13 3/8"	72.0#	400'	450 sx(Circulate)
11"	8 5/8"	24.0#	2350'	550 sx(Circulate)
7 7/8"	4 1/2"	10.5#	6500'	900 sx(2 stage) (T.O.C. 2000')

Proposed plans are to drill to 6500' to test the Bone Spring formation. Run production casing, perforate, treat, and test. If Bone Spring formation is commercial, put on production. If the Bone Spring formation proves noncommercial, plug back to the Delaware Sands and attempt to establish commercial production.

Designation of Operator form is included with the application to drill from Robert Enfield lessee.

BOP sketch is attached.

\*Lease expires 4/31/84.

IN ABOVE SPACE DESCRIBE PROPOSED PROGRAM: If proposal is to deepen or plug back, give data on present productive zone and proposed new productive zone. If proposal is to drill or deepen directionally, give pertinent data on subsurface locations and measured and true vertical depths. Give blowout preventer program, if any.

24.

SIGNED

Larry W. Franklin

TITLE

Agent

DATE

4/10/84

(This space for Federal or State office use)

PERMIT NO.

APPROVAL DATE

APPROVED BY

Orig. Sgd. Earl R. Cunningham

TITLE

District Manager

DATE

APR 12 1984

APPROVAL SUBJECT TO  
GENERAL REQUIREMENTS AND  
SPECIAL STIPULATIONS

ATTACHED

\*See Instructions On Reverse Side

MEXICO OIL CONSERVATION COMMISS  
WELL LOCATION AND ACREAGE DEDICATION PLAT

Form C-102  
Supersedes C-128  
Effective 1-1-65

All distances must be from the outer boundaries of the Section.

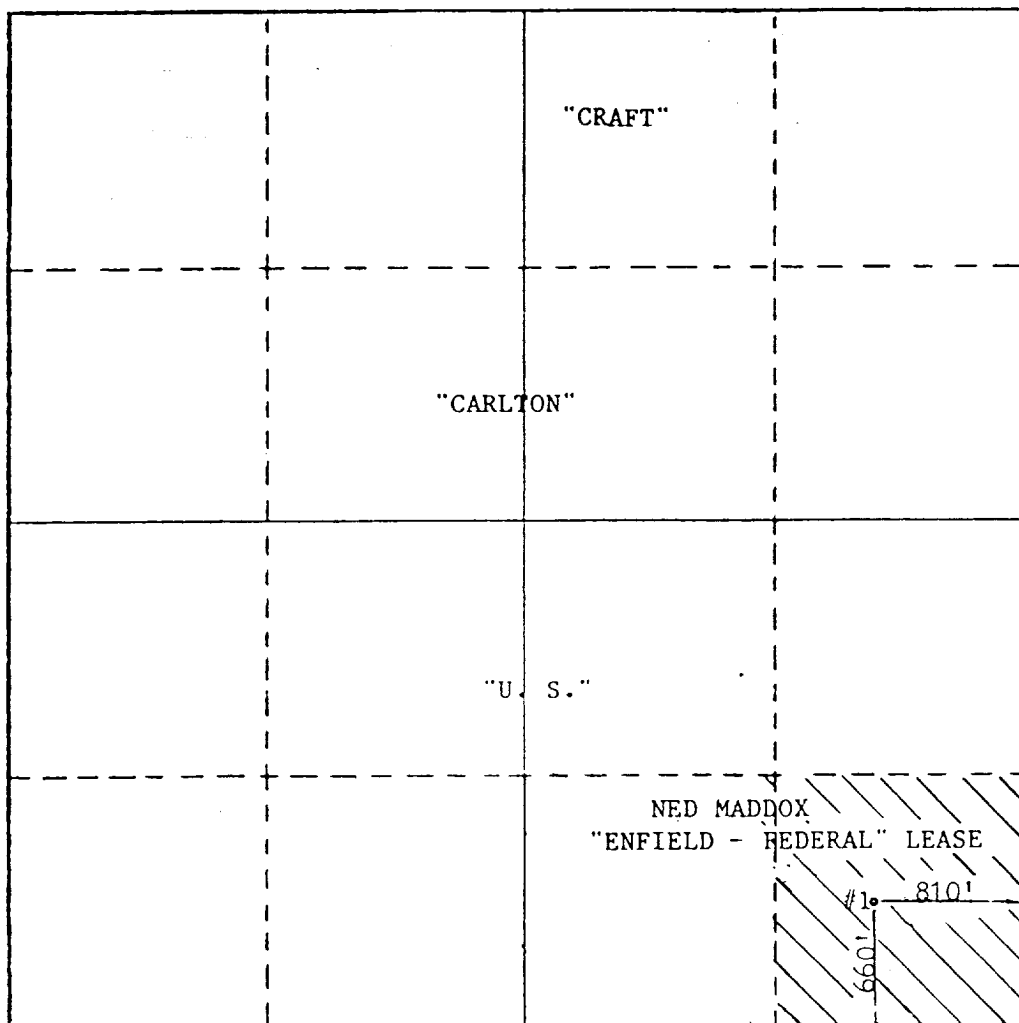
Operator <b>NED MADDOX</b>			Lease <b>ENFIELD - FEDERAL</b>		Well No. <b>1</b>
Unit Letter <b>"P"</b>	Section <b>17</b>	Township <b>- 24-S</b>	Range <b>-28-E</b>	County <b>EDDY COUNTY</b>	
Actual Footage Location of Well: <b>660</b> feet from the <b>SOUTH</b> line and <b>810</b> feet from the <b>EAST</b> line					
Ground Level Elev. <b>3054</b>	Producing Formation <b>BONE SPRINGS</b>		Pool <b>WILDCAT - Bone Springs</b>	Dedicated Acreage: <b>40</b> Acres	

1. Outline the acreage dedicated to the subject well by colored pencil or hatchure marks on the plat below.
2. If more than one lease is dedicated to the well, outline each and identify the ownership thereof (both as to working interest and royalty).
3. If more than one lease of different ownership is dedicated to the well, have the interests of all owners been consolidated by communitization, unitization, force-pooling, etc?

☐ Yes ☐ No If answer is "yes," type of consolidation \_\_\_\_\_

If answer is "no," list the owners and tract descriptions which have actually been consolidated. (Use reverse side of this form if necessary.) \_\_\_\_\_

No allowable will be assigned to the well until all interests have been consolidated (by communitization, unitization, forced-pooling, or otherwise) or until a non-standard unit, eliminating such interests, has been approved by the Commission.



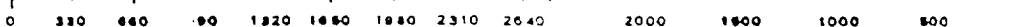
**CERTIFICATION**

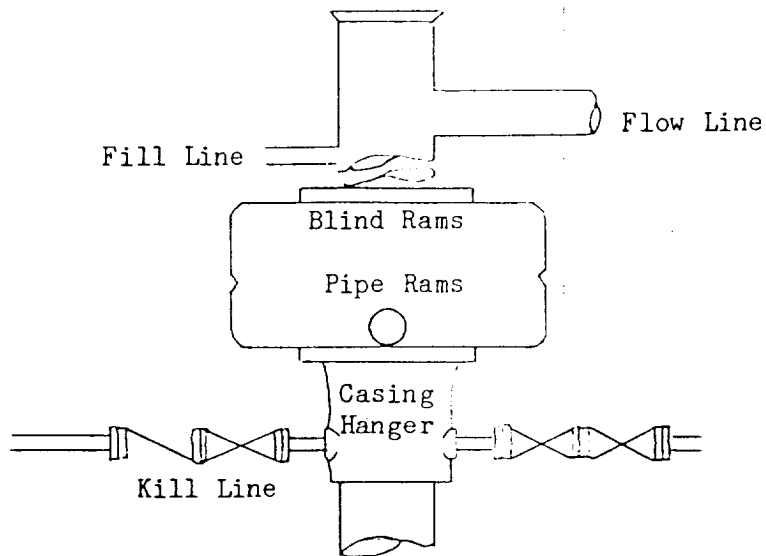
I hereby certify that the information contained herein is true and complete to the best of my knowledge and belief.

Name  
**Terry W. Franklin**  
Position  
**Agent**  
Company  
**Ned Maddox**  
Date  
**4/11/84**

I hereby certify that the well location shown on this plat was plotted from field notes of actual surveys made by me or under my supervision, and that the same is true and correct to the best of my knowledge and belief.

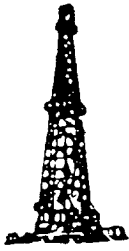
Date Surveyed  
**APRIL 5, 1984**  
Registered Professional Engineer and Land Surveyor  
**MAX A. SCHUMANN JR.**  
Certificate No. **1510**





BOP STACK

3000 psi working pressure



## Oil & Gas Administrative Services

TERRY W. FRANKLIN

P.O. Box 2664

Roswell, NM 88201

### SUPPLEMENTAL DRILLING DATA

Ned Maddox  
Enfield Federal No. 1  
660' FSL & 810' FEL  
Sec. 17, T24S, R28E  
Eddy County, New Mexico  
NM-20359

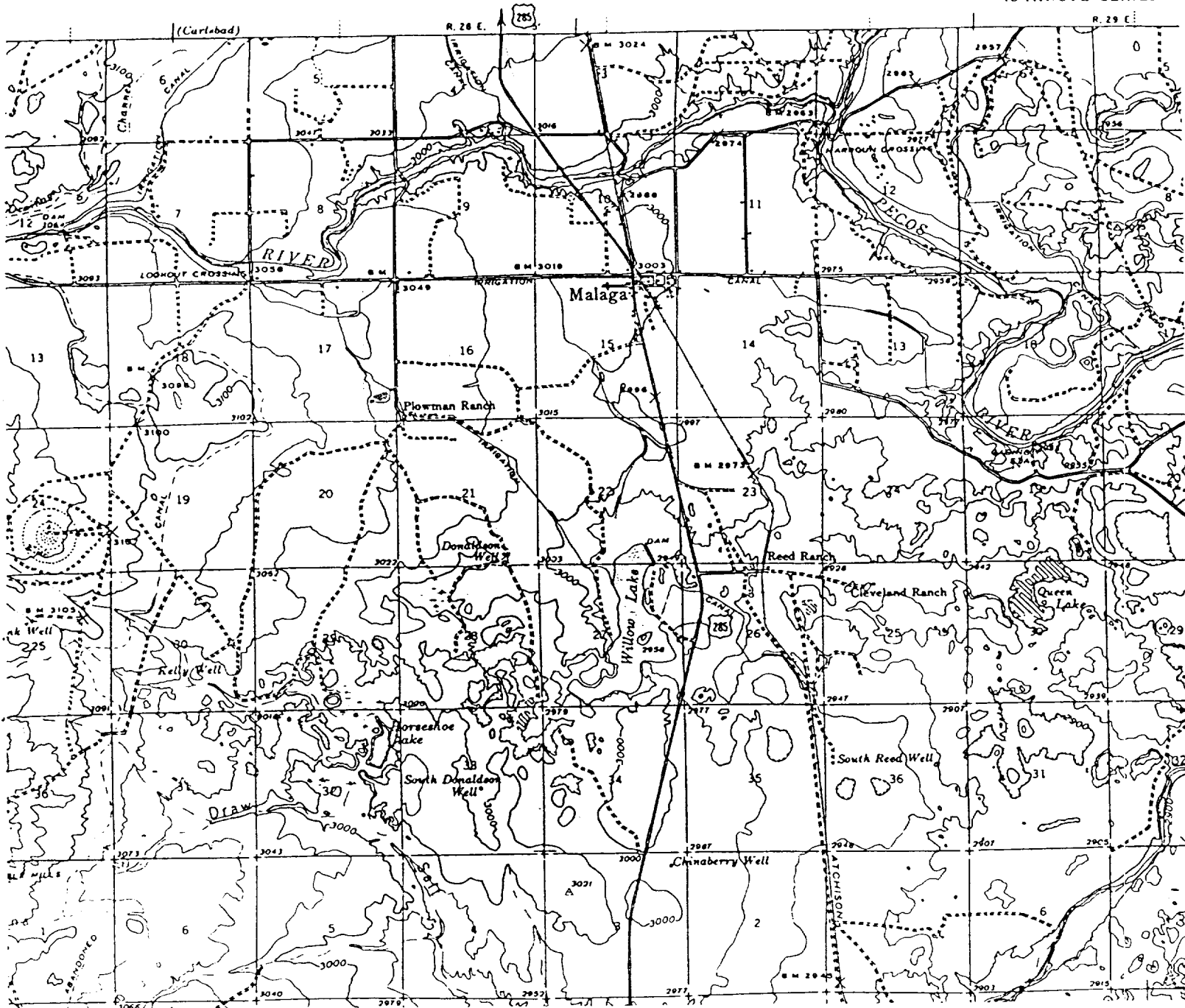
1. Surface Formation: Alluvium
2. Estimated Geological Marker Tops:

Lamar Lime	2550'
Ramsey SS	2600'
Bone Spring	6120'
3. Mineral Bearing Formations:

Bone Spring - oil
Delaware - oil
4. Proposed Casing and Cement Program:
  - 20.0" - Set approximately 40' of conductor pipe and ready mix to surface.
  - 13 3/8" - Set approximately 400', 72.0#, K-55, ST&C casing and cement to surface with 450 sx of cement.
  - 8 5/8" - Set approximately 2350', 24.0#, K-55, ST&C casing and cement with 550 sx to surface.
  - 4 1/2" - Set to total depth, 10.5#, K-55, ST&C casing. Cement in two stages. Set DV tool at 4500'. 1st stage cement with 450 sx. 2nd stage cement with 450 sx. Top of cement at approximately 2000' or 350' into intermediate casing string.
5. Pressure Control Equipment: A 3000 psi working pressure BOP will be installed after 8 5/8" casing is set.
6. Testing, Logging, and Coring Programs:
  - Testing: None anticipated.
  - Logging: CNL-FDC, DLL, gamma ray, caliper
  - Coring : None anticipated

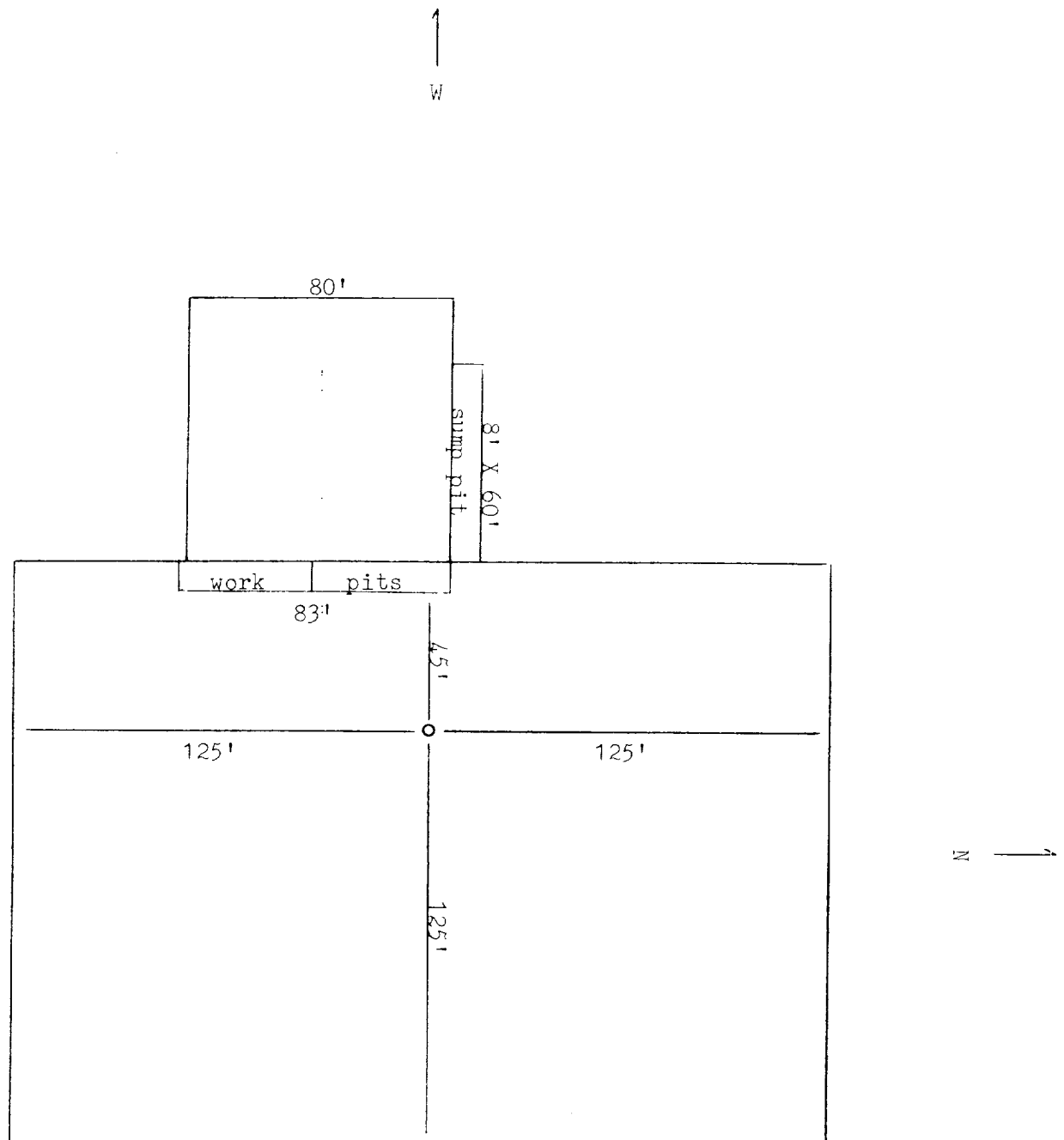
NEW MEXICO  
(EDDY COUNTY)  
MALAGA QUADRANC  
15-MINUTE SERIES

CARLEBAD 13 MI.  
LOVING 3 MI.



Caliche pit  
Proposed access road  
Cattle guard

Exhibit 'B'  
Ned Maddox  
Enfield Federal No. 1  
660' FSL & 810' FEL  
Sec. 17, T24S, R28E  
Eddy County, N.M.



\* V-door location to the north  
due to caliche pit edging lo-  
cation to the north

Exhibit 'C'  
Ned Maddox  
Enfield Federal No. 1  
660' FSL & 810' FEL  
Sec. 17, T24S, R28E  
Eddy County, N.M.