

UNITED STATES
DEPARTMENT OF THE INTERIOR
GEOLOGICAL SURVEY

APPLICATION FOR PERMIT TO DRILL, DEEPEN, OR PLUG BACK

1a. TYPE OF WORK DRILL <input checked="" type="checkbox"/> DEEPEN <input type="checkbox"/> PLUG BACK <input type="checkbox"/>		5. LEASE DESIGNATION AND SERIAL NO. 40-060613	
b. TYPE OF WELL OIL WELL <input checked="" type="checkbox"/> GAS WELL <input type="checkbox"/> OTHER <input type="checkbox"/>		6. IF INDIAN, ALLOTTEE OR TRIBE NAME	
2. NAME OF OPERATOR MYCO Industries, Inc.		7. UNIT AGREEMENT NAME	
3. ADDRESS OF OPERATOR 207 S. 4th, Artesia, New Mexico 88210		8. FARM OR LEASE NAME Hole in the Ground Fed.	
4. LOCATION OF WELL (Report location clearly and in accordance with any State requirements.) At surface 2310' FNL and 2310' FEL At proposed prod. zone same		9. WELL NO.	
14. DISTANCE IN MILES AND DIRECTION FROM NEAREST TOWN OR POST OFFICE* Approximately 20 miles east of Carlsbad, NM		10. FIELD AND POOL, OR WILDCAT Big Eddy Unit	
15. DISTANCE FROM PROPOSED* LOCATION TO NEAREST PROPERTY OR LEASE LINE, FT. (Also to nearest drlg. unit line, if any) 330'		11. SEC., T., R., M., OR BLK. AND SURVEY OR AREA Sec. 10-T22S-R28E	
18. DISTANCE FROM PROPOSED LOCATION* TO NEAREST WELL, DRILLING, COMPLETED, OR APPLIED FOR, ON THIS LEASE, FT. 800'		12. COUNTY OR PARISH Eddy	
16. NO. OF ACRES IN LEASE 1156.51		13. STATE NM	
17. NO. OF ACRES ASSIGNED TO THIS WELL 40		19. PROPOSED DEPTH 6200'	
20. ROTARY OR CABLE TOOLS Rotary		22. APPROX. DATE WORK WILL START* ASAP	
21. ELEVATIONS (Show whether DF, RT, GR, etc.) 3131' GL			

PROPOSED CASING AND CEMENTING PROGRAM

SIZE OF HOLE	SIZE OF CASING	WEIGHT PER FOOT	SETTING DEPTH	QUANTITY OF CEMENT
17 1/2"	13 3/8"	48# H-40	1000' 1/2	600 sx circ
7 7/8"	5 1/2"	9.5# J-55	TD	900 sx circ

We propose to drill and test the Delaware and intermediate formations. Approximately 1000' of surface casing will be set and cement circulated to shut off gravel and caving. If commercial, production casing will be run and cemented with adequate cover, perforated and stimulated as needed for production.

MUD PROGRAM: FW/LCM to 1000', Brine & LCM to TD.

BOP PROGRAM: BOP's will be installed at the offset and tested daily.

GAS NOT DEDICATED.

IN ABOVE SPACE DESCRIBE PROPOSED PROGRAM: If proposal is to deepen or plug back, give data on present productive zone and proposed new productive zone. If proposal is to drill or deepen directionally, give pertinent data on subsurface locations and measured and true vertical depths. Give blowout preventer program, if any.

24. SIGNED Cy Cowan TITLE Regulatory Agent DATE 5/11/84
(This space for Federal or State office use)

PERMIT NO. Cy Cowan APPROVAL DATE 6-12-84
APPROVED BY Scott Adams TITLE Regulatory Agent DATE 6-12-84
CONDITIONS OF APPROVAL, IF ANY:

APPROVAL SUBJECT TO
GENERAL REQUIREMENTS AND
SPECIAL STIPULATIONS
ATTACHED

NEW MEXICO OIL CONSERVATION COMMISSION
WELL LOCATION AND ACREAGE DEDICATION PLAT

Form C-102
Supersedes C-128
Effective 1-1-65

All distances must be from the outer boundaries of the Section

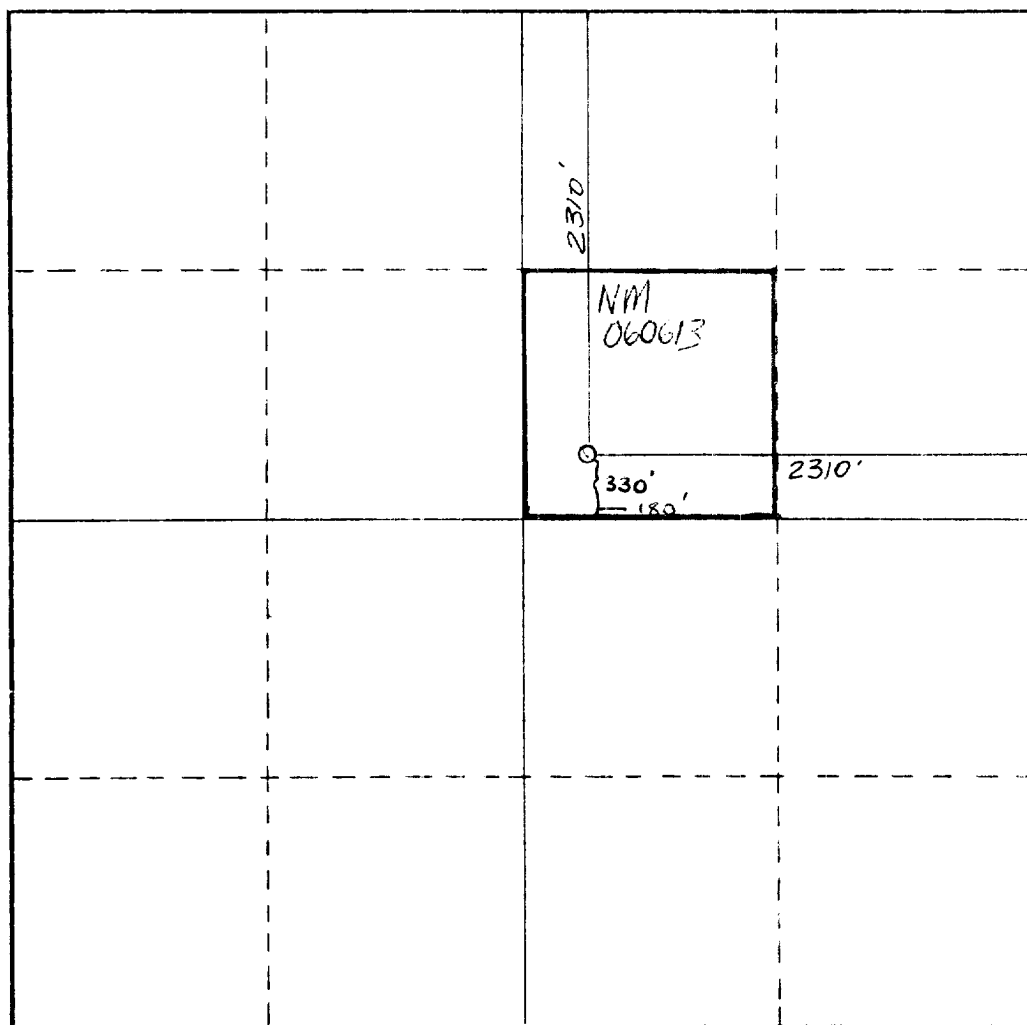
Operator MYCO		Lease Hole in the Ground Federal		Well No. 1
Unit Letter G	Section 10	Township 22 South	Range 28 East	County Eddy
Actual Footage Location of Well: 2310 feet from the North line and 2310 feet from the East line				
Ground Level Elev. 3131.	Producing Formation DELAWARE	Pool UNDES DELANAVE	Dedicated Acreage: 40 Acres	

- Outline the acreage dedicated to the subject well by colored pencil or hachure marks on the plat below.
- If more than one lease is dedicated to the well, outline each and identify the ownership thereof (both as to working interest and royalty).
- If more than one lease of different ownership is dedicated to the well, have the interests of all owners been consolidated by communitization, unitization, force-pooling, etc?

☐ Yes ☒ No If answer is "yes," type of consolidation _____

If answer is "no," list the owners and tract descriptions which have actually been consolidated. (Use reverse side of this form if necessary.) _____

No allowable will be assigned to the well until all interests have been consolidated (by communitization, unitization, forced-pooling, or otherwise) or until a non-standard unit, eliminating such interests, has been approved by the Commission.



CERTIFICATION

I hereby certify that the information contained herein is true and complete to the best of my knowledge and belief.

Cy Cowan

Name

Cy Cowan

Position

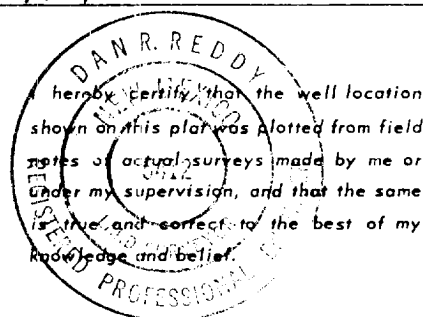
Regulatory Agent

Company

Yates Petroleum Corp.

Date

5/11/84



Date Surveyed

May 2, 1984

Registered Professional Engineer
and/or Land Surveyor

Dan R. Reddy

Certificate No.

NM PE&LS #5412

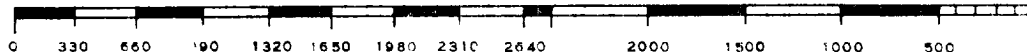
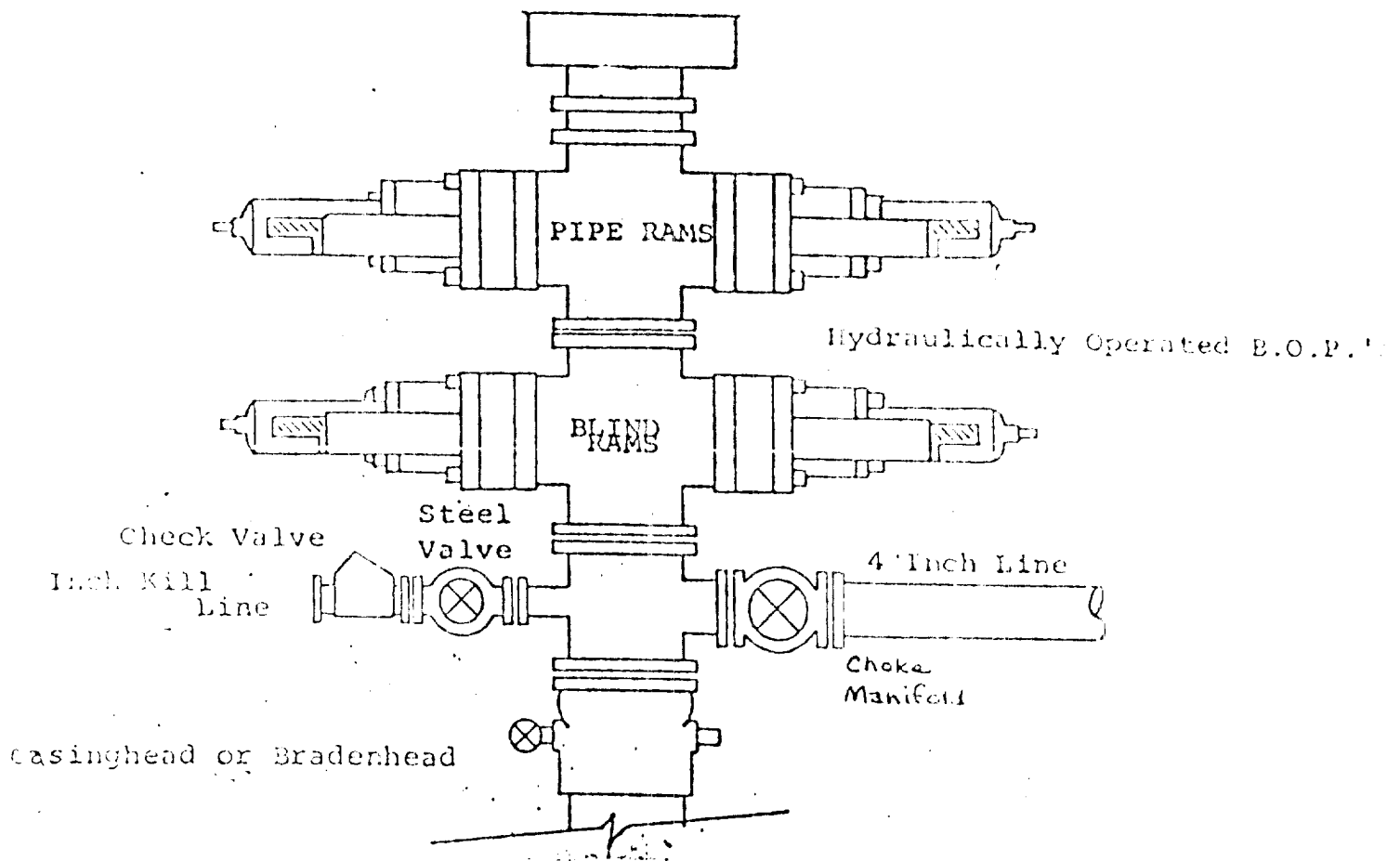


EXHIBIT B

BOP DIAGRAM

RATED 3000[#]



MYCO INDUSTRIES, INC.
Hole in the Ground Federal #1
2310' FNL and 2310' FEL
Sec. 10-T22S-R28E

In conjunction with Form 9-331C, Application for Permit to Drill subject well, MYCO Industries, Inc. submits the following ten items of pertinent information in accordance with BLM requirements.

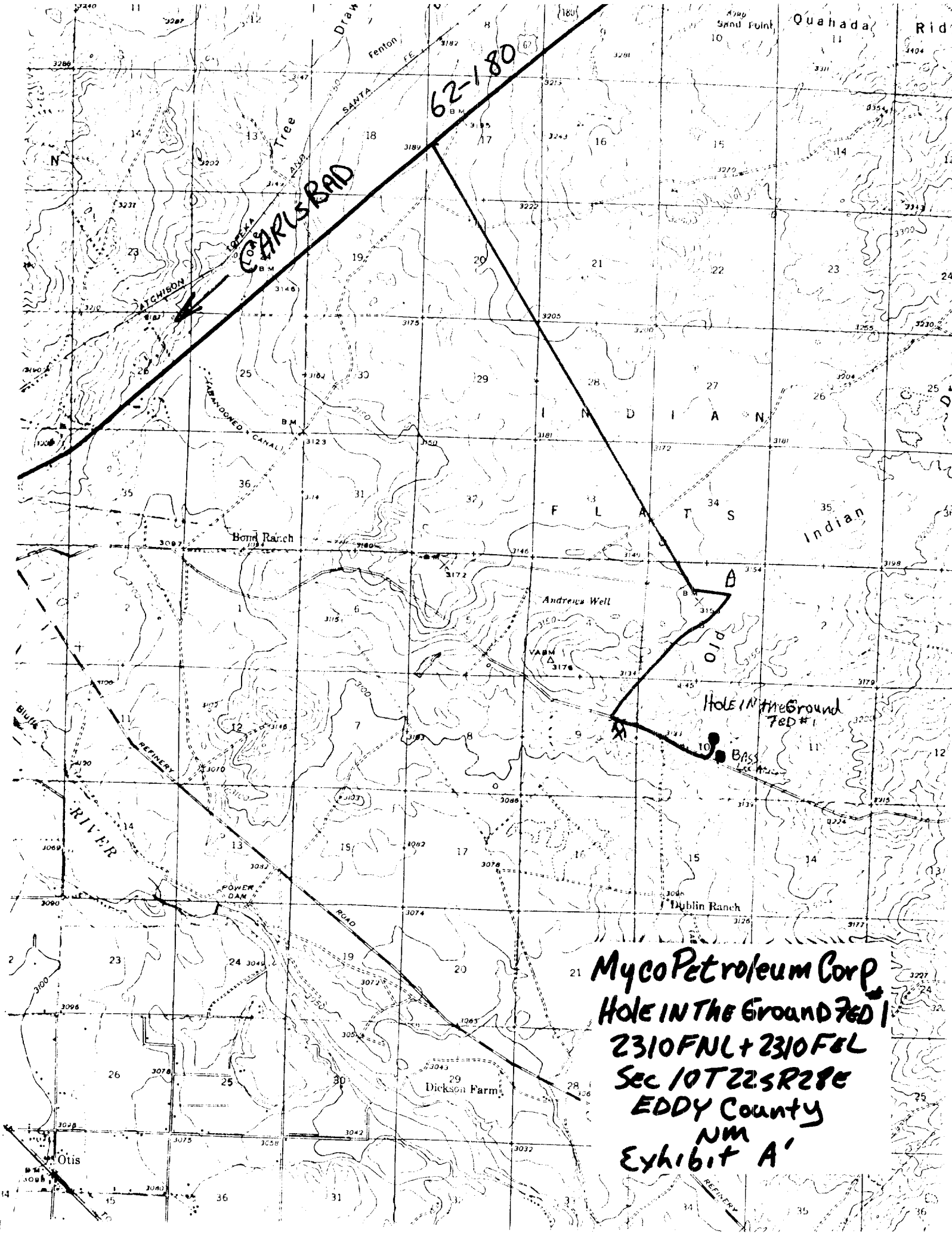
1. The geologic surface formation is sand dunes.
2. The estimated tops of geologic markers are as follows:

Top Delaware	2578'
Cherry Canyon	3690'
Bone Springs Lime	6068'
TD	6200'
3. The estimated depths at which anticipated water, oil or gas formations are expected to be encountered:

Water: 200-350'

Oil or Gas: 6100'
4. Proposed Casing Program: See Form 9-331C.
5. Pressure Control Equipment: See Form 9-331C.
6. Mud Program: See Form 9-331C.
7. Auxiliary Equipment: Kelly Cock; pit level indicators and flow sensor equipment; sub with full-opening valve on floor, drill pipe connection.
8. Testing, Logging and Coring Program:

Samples: 10' samples from surface casing to TD.
DST's: As warranted.
Coring: None.
Logging: CNL-FDC & DIL RxO TD to csg. GR-CNL csg to surface.
9. No abnormal pressures or temperatures are anticipated.
10. Anticipated starting date: As soon as possible after approval.



Myco Petroleum Corp
Hole in the Ground 7ED 1
2310 FNL + 2310 FEL
Sec 10 T22 S R28 E
EDDY County
NM
Exhibit A'

RECEIVED

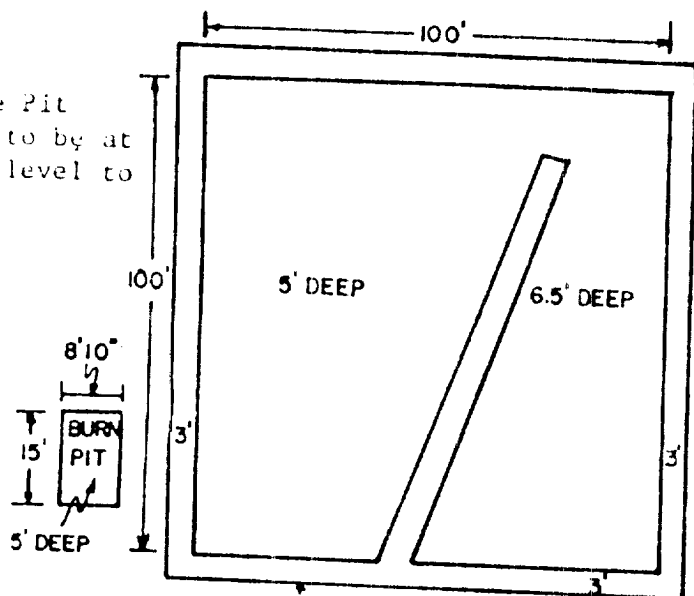
JUN 14 1984

O.C.O.
HOBBS OFFICE

YATES PETROLEUM CORP.

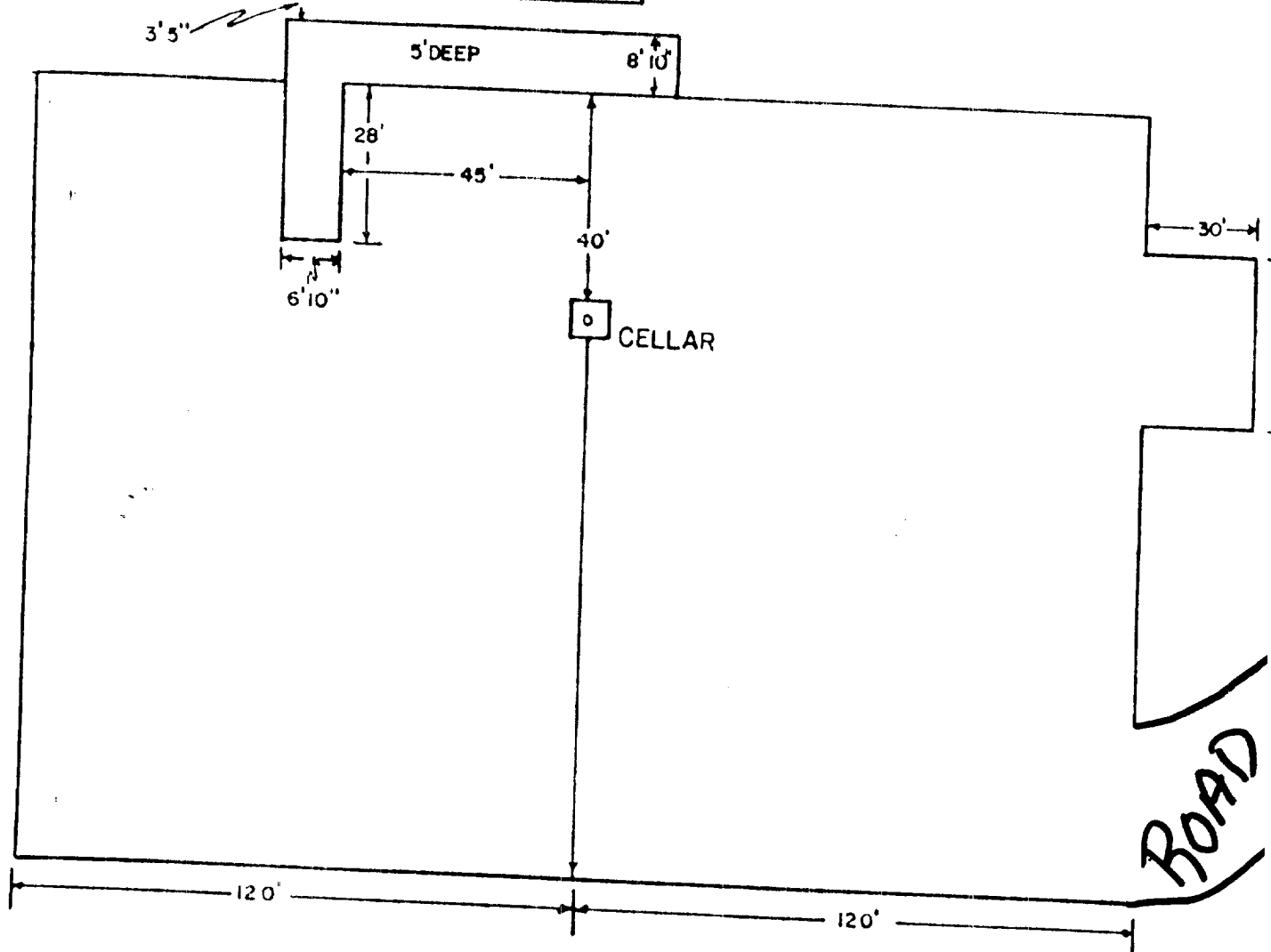
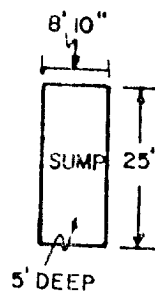
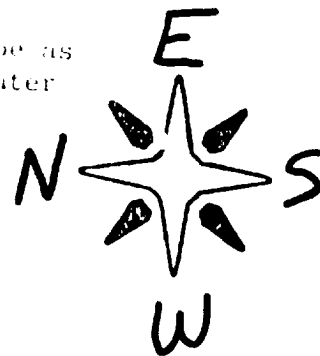
Exhibit C

Reserve Pit
bottom to be at
ground level to
1 ft.



NOTE:

Inside walls must be as
high and wide as outer
walls of pit.



RECEIVED BY
JUN 13 1984
O. C. D.
ARTESIA, OFFICE

RECEIVED
JUN 14 1984
O.C.D.
HOBBS OFFICE