

NEW MEXICO OIL CONSERVATION COMMISSION  
WELL LOCATION AND ACREAGE DEDICATION PLAT

RECEIVED BY

NOV 23 1983

Form C-102  
Supersedes C-128  
Effective 1-1-65

All distances must be from the outer boundaries of the Section

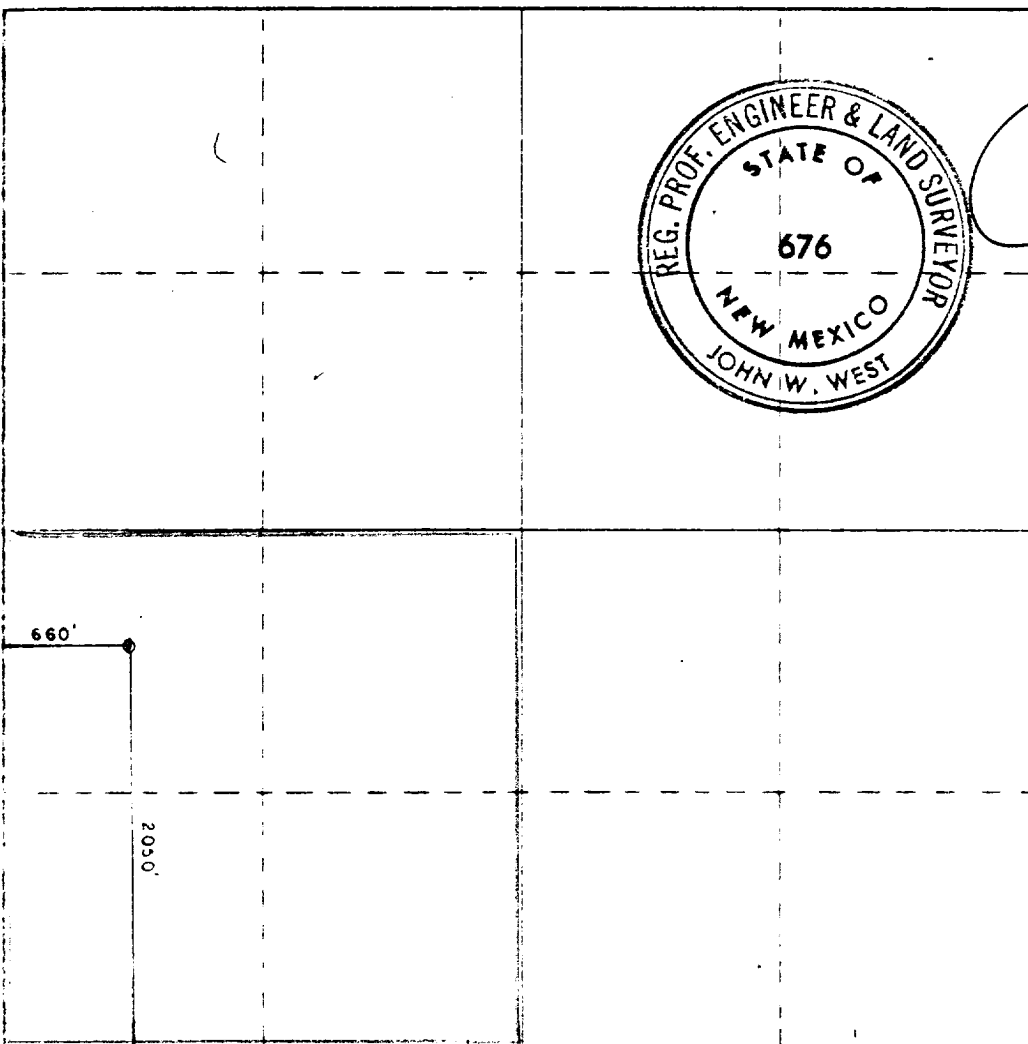
Owner <b>UNION OIL COMPANY OF CALIFORNIA</b>			Lease <b>CRAWFORD 27</b>		
Quarter <b>L</b>	Section <b>27</b>	Township <b>24 SOUTH</b>	Range <b>26 EAST</b>	County <b>EDDY</b>	
Well Location of Well:					
2050 feet from the <b>SOUTH</b> line and		660 feet from the <b>WEST</b> line			
Surface Level Elev. <b>3360</b>	Producing Formation <b>Pennsylvanian</b>	Pool <b>White City Pennsylvanian Gas</b>		Dedicated Acreage <b>160</b>	

1. Outline the acreage dedicated to the subject well by colored pencil or hachure marks on the plat below.
2. If more than one lease is dedicated to the well, outline each and identify the ownership thereof (both as to working interest and royalty).
3. If more than one lease of different ownership is dedicated to the well, have the interests of all owners been consolidated by communitization, unitization, force-pooling, etc?

☐ Yes ☐ No If answer is "yes," type of consolidation \_\_\_\_\_

If answer is "no," list the owners and tract descriptions which have actually been consolidated. (Use reverse side of this form if necessary.) \_\_\_\_\_

No allowable will be assigned to the well until all interests have been consolidated (by communitization, unitization, forced-pooling, or otherwise) or until a non-standard unit, eliminating such interests, has been approved by the Commission.



CERTIFICATION

I hereby certify that the information contained herein is true and complete to the best of my knowledge and belief

*J.R. Hughes*  
J.R. Hughes

District Drilling Supt.

Position

Union Oil Co. of California

Company

November 18, 1983

Date

I hereby certify that the well location shown on this plat was plotted from field notes of actual surveys made by me or under my supervision and that the same is true and correct to the best of my knowledge and belief

Date Surveyed

NOVEMBER 18, 1983

Registered Professional Engineer

Trainer, Land Surveyor

*John W. West*  
Certificate No. JOHN W. WEST 676  
RONALD L. ELSON 3239