

Keep in current file

---

30-015-25135

DEC 12 1984

UNITED STATES  
DEPARTMENT OF THE INTERIOR  
GEOLOGICAL SURVEY

## APPLICATION FOR PERMIT TO DRILL, DEEPEN, OR PLUG BACK

## 1. TYPE OF WORK

DRILL ☒DEEPEN ☐PLUG BACK ☐

## b. TYPE OF WELL

OIL WELL ☒GAS WELL ☐

OTHER

SINGLE ZONE ☒MULTIPLE ZONE ☐

## 2. NAME OF OPERATOR

Exxon Corporation ✓

## 3. ADDRESS OF OPERATOR

P. O. Box 1600, Midland, TX 79702

## 4. LOCATION OF WELL (Report location clearly and in accordance with any State requirements.)\*

At surface

1565' FNL &amp; 200' FEL of Section

At proposed prod. zone

## 14. DISTANCE IN MILES AND DIRECTION FROM NEAREST TOWN OR POST OFFICE\*

12 miles SW of Carlsbad

## 15. DISTANCE FROM PROPOSED\*

LOCATION TO NEAREST  
PROPERTY OR LEASE LINE, FT. 2400'  
(Also to nearest drlg. unit line, if any) 200'

## 16. NO. OF ACRES IN LEASE

2520\*

17. NO. OF ACRES ASSIGNED  
TO THIS WELL

40

18. DISTANCE FROM PROPOSED LOCATION\*  
TO NEAREST WELL, DRILLING, COMPLETED,  
OR APPLIED FOR, ON THIS LEASE, FT.

## 19. PROPOSED DEPTH

5400'

## 20. ROTARY OR CABLE TOOLS

Rotary

## 21. ELEVATIONS (Show whether DF, RT, GR, etc.)

3446' GR

## 22. APPROX. DATE WORK WILL START\*

4th Quarter, 1984

## 23. PROPOSED CASING AND CEMENTING PROGRAM

SIZE OF HOLE	SIZE OF CASING	WEIGHT PER FOOT	SETTING DEPTH	QUANTITY OF CEMENT
20"	16	65#	60'	Circ.
12-1/4"	8-5/8"	24#	1400'	Circ.
7-7/8"	5-1/2"	14, 15.5#	5400'	1000 sx.

BOP Program: 8-5/8" Type RRA 2000 psi See Spec's Attached.

Mud Program: 0 - 1600': FW Spud 8.4 - 8.6 ppg  
1600 - 5400': CBW 8.8 - 9.2 ppg

\*960 acres in Mary Federal lease.

A request is being made for approval of the unorthodox location from the NMOCC.

IN ABOVE SPACE DESCRIBE PROPOSED PROGRAM: If proposal is to deepen or plug back, give data on present productive zone and proposed new productive zone. If proposal is to drill or deepen directionally, give pertinent data on subsurface locations and measured and true vertical depths. Give blowout preventer program, if any.

24.

SIGNED

Melba Kripling

TITLE Unit Head

DATE 11-16-84

(This space for Federal or State office use)

PERMIT NO.

APPROVAL DATE

APPROVED BY

TITLE

DATE

12-11-84

Subject to  
Like Approval  
by StateAPPROVAL SUBJECT TO  
GENERAL REQUIREMENTS AND  
SPECIAL STIPULATIONS  
ATTACHED

## Instructions

**General:** This form is designed for submitting proposals to perform certain well operations, as indicated, on all types of lands and leases for appropriate action by either a Federal or a State agency, or both, pursuant to applicable Federal and/or State laws and regulations. Any necessary special instructions concerning the use of this form and the number of copies to be submitted, particularly with regard to local, area, or regional procedures and practices, either are shown below or will be issued by, or may be obtained from, the local Federal and/or State office.

**Item 1:** If the proposal is to redrill to the same reservoir at a different subsurface location or to a new reservoir, use this form with appropriate notations. Consult applicable State or Federal regulations concerning subsequent work proposals or reports on the well.

**Item 4:** If there are no applicable State requirements, locations on Federal or Indian land should be described in accordance with Federal requirements. Consult local State or Federal office for specific instructions.

**Item 14:** Needed only when location of well cannot readily be found by road from the land or lease description. A plat, or plats, separate or on this reverse side, showing the roads to, and the surveyed location of, the well, and any other required information, should be furnished when required by Federal or State agency offices.

**Items 15 and 18:** If well is to be, or has been directionally drilled, give distances for subsurface location of hole in any present or objective production zone.

**Item 22:** Consult applicable Federal or State regulations, or appropriate officials, concerning approval of the proposal before operations are started.

Exxon Lse.No. \_\_\_\_\_

W MEXICO OIL CONSERVATION COMMISSION

Form C-102  
Supersedes C-128  
Effective 1-1-65

State Lse.No. \_\_\_\_\_

## WELL LOCATION AND ACREAGE DEDICATION PLAT

Federal Lse.No. \_\_\_\_\_

All distances must be from the outer boundaries of the Section.

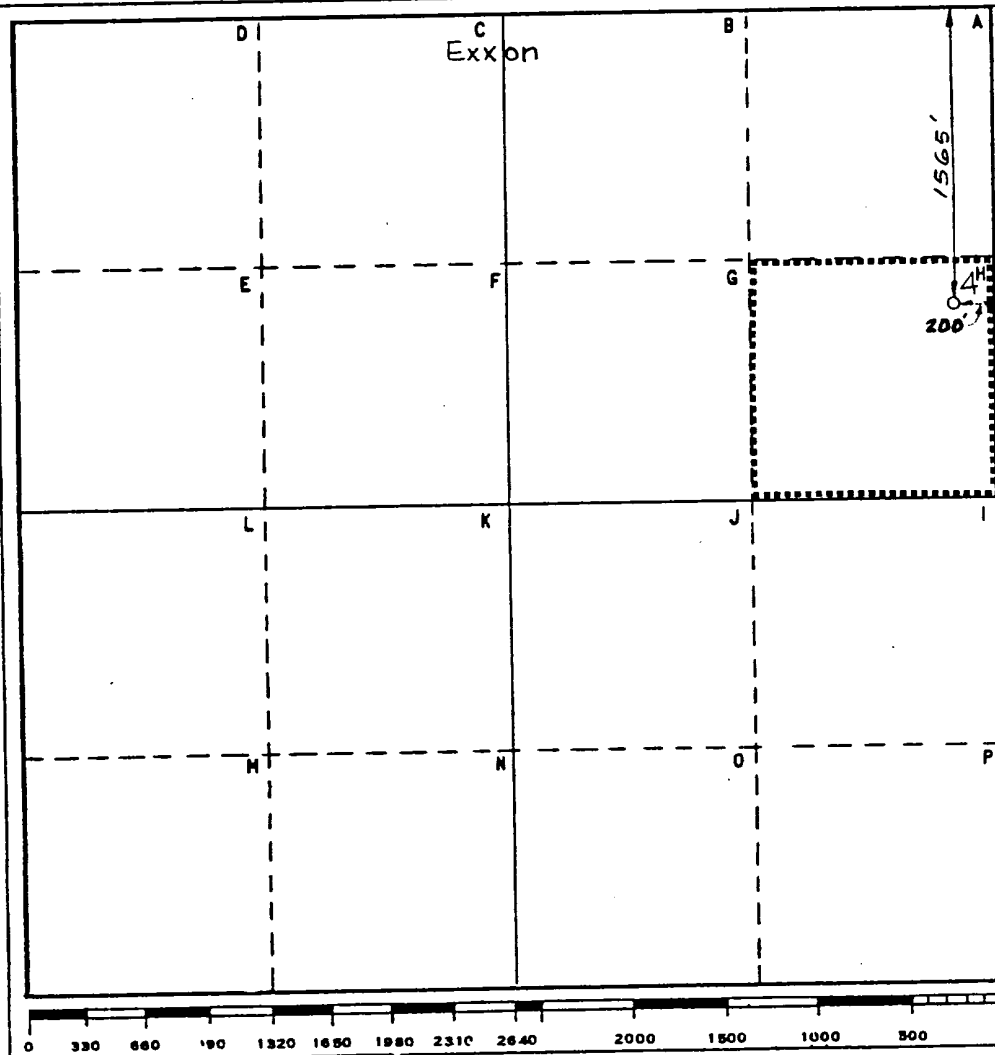
Operator Exxon Corporation		Lease MARY FEDERAL		Well No. 4
Unit Letter H	Section 24	Township 23S	Range 25E	County EDDY
Actual Footage Location of Well: 1565 feet from the NORTH line and 200 feet from the EAST line				
Ground Level Elev. 3446'	Producing Formation WEST, DARK CANYON-DELAWARE		Pool DELAWARE	Dedicated Acreage: 40 Acres

1. Outline the acreage dedicated to the subject well by colored pencil or hatchure marks on the plat below.
2. If more than one lease is dedicated to the well, outline each and identify the ownership thereof (both as to working interest and royalty).
3. If more than one lease of different ownership is dedicated to the well, have the interests of all owners been consolidated by communitization, unitization, force-pooling, etc?

☐ Yes ☐ No If answer is "yes," type of consolidation \_\_\_\_\_

If answer is "no," list the owners and tract descriptions which have actually been consolidated. (Use reverse side of this form if necessary.) \_\_\_\_\_

No allowable will be assigned to the well until all interests have been consolidated (by communitization, unitization, forced-pooling, or otherwise) or until a non-standard unit, eliminating such interests, has been approved by the Commission.



## CERTIFICATION

I hereby certify that the information contained herein is true and complete to the best of my knowledge and belief.

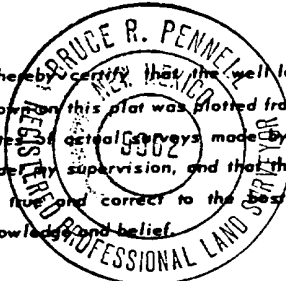
Name  
*Maria Knippling*

Position  
UNIT HEAD

Company Exxon Corporation  
Box 1600 Midland, Texas

Date  
11-15-84

I hereby certify that the well location shown on this plat was plotted from field notes of actual surveys made by me or under my supervision, and that the same is true and correct to the best of my knowledge and belief.



Date Surveyed  
11-09-84

Registered Professional Engineer  
and/or Land Surveyor

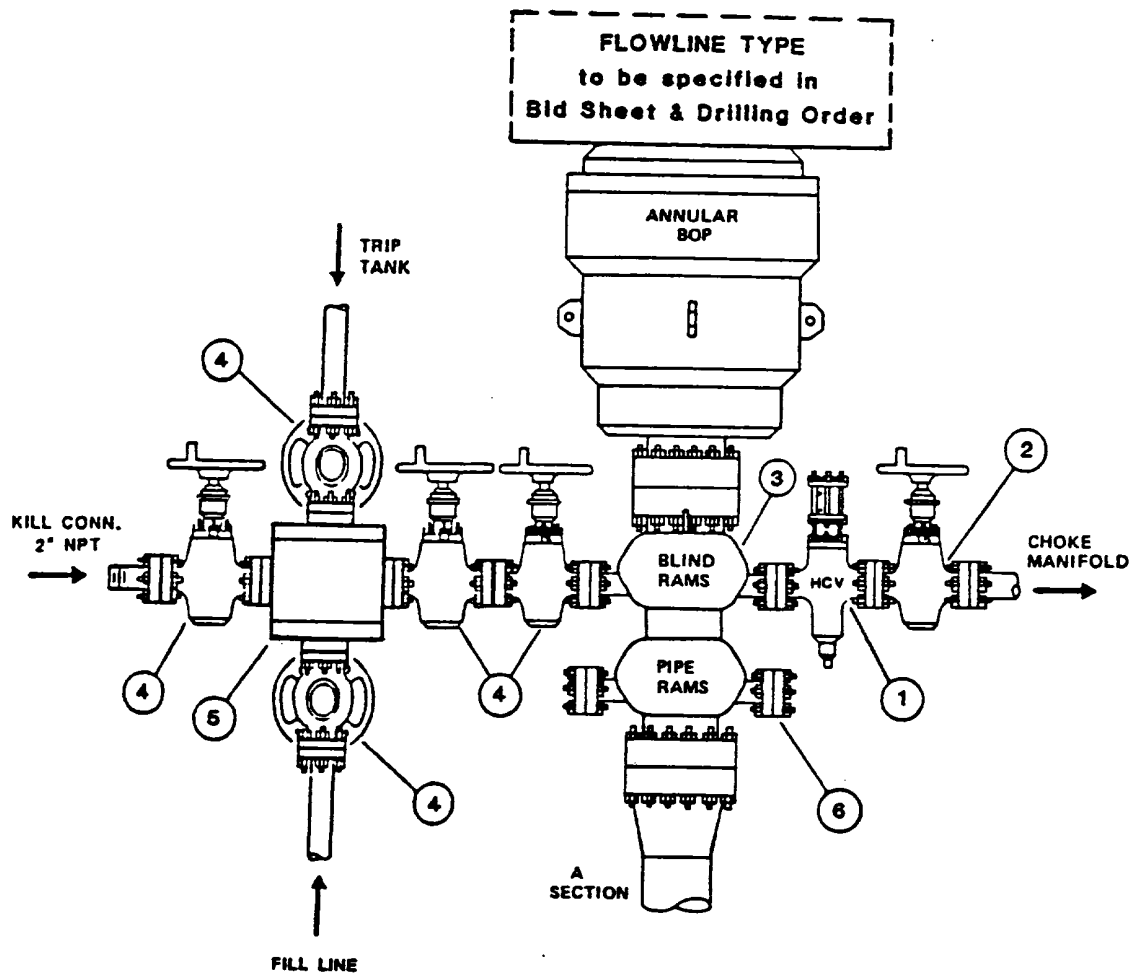
*Bruce R. Pennell*  
Certificate No.

12 Miles SW of Carlsbad, New Mexico

C.E. Sec. File No. W-A-8212-A

# TYPE RRA BOP STACK

## THREE PREVENTERS



**C MPONENT SPECIFICATION**  
**Type RRA BOP Stack**

1. Flanged hydraulically controlled gate valve -- 3" minimum nominal diameter -- same working pressure as BOP stack.
2. Flanged plug gate valve -- 3" minimum nominal diameter -- same working pressure as BOP stack.
3. BOP outlets must be 2" minimum nominal diameter for kill line and 3" minimum diameter for choke line.
4. Flanged plug or gate valve -- 2" minimum nominal diameter -- same working pressure as BOP stack.
5. Flanged cross or two (2) flanged tees.
6. Any BOP side outlet flange, located below the bottom ram, must be equipped with a blind flange.

NOTE: Each BOP stack must have separate side outlet connections for kill and choke lines, unless specific approval for a single side-outlet is obtained from the Exxon Division Drilling Manager prior to rig-up. Such approval will not be granted unless the equipment arrangement conforms to the specifications shown on pages 14 and 15 of this Section.

DRILLING PLAN  
Mary Federal #4  
Section 24, T-23-S, R-25-E  
Eddy County, New Mexico

1. Estimated tops of important geological markers:

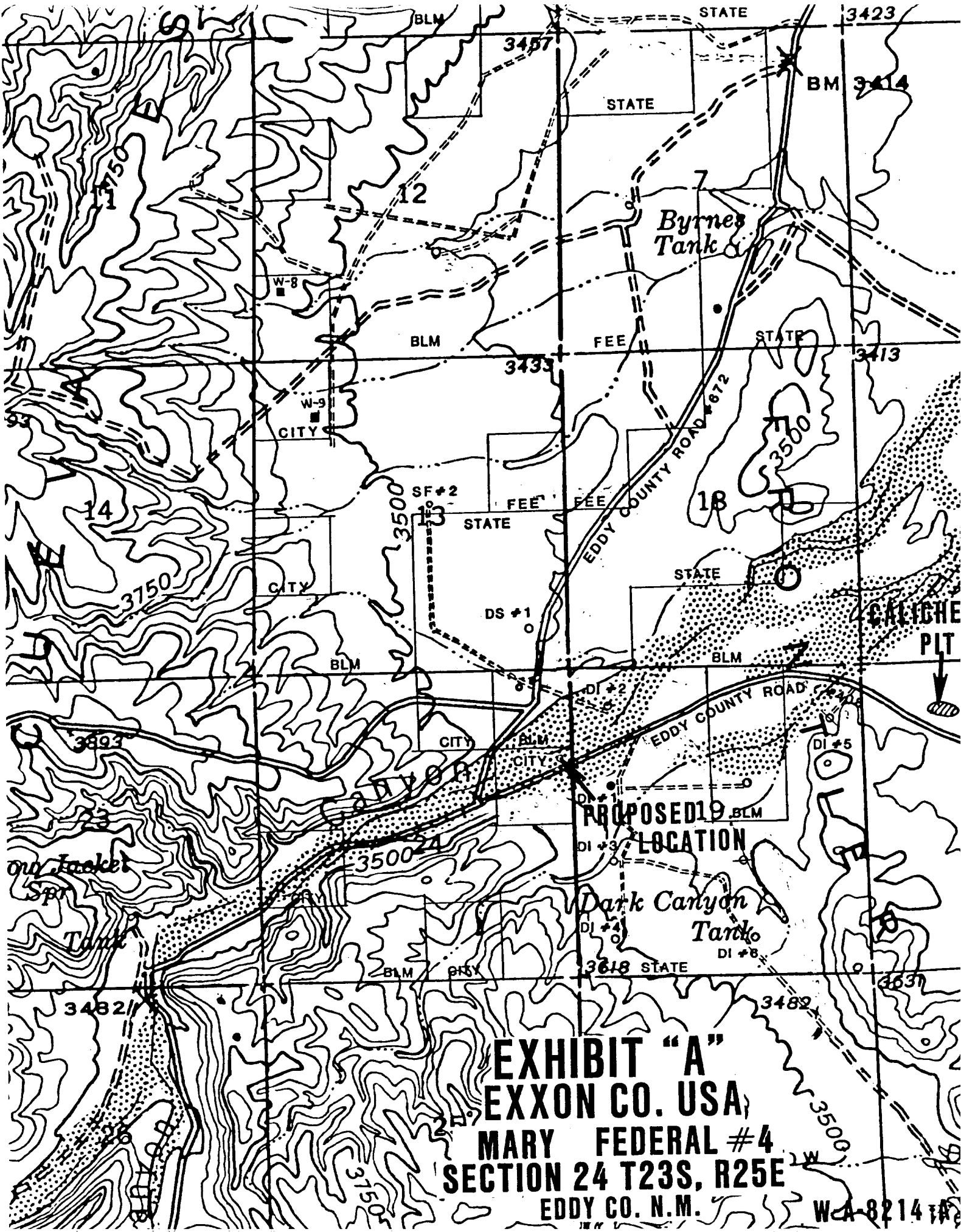
Delaware:	1,450'
Bone Spring:	4,800'

2. Estimated depths at which the top of anticipated water, oil, gas or other mineral-bearing formations are expected to be encountered and the plan for protecting such resources.

	Depth	Protection
Deepest FW :	1,450'	Casing & Cement
Oil-Bone Spring:	4,800'	Casing & Cement

3. Minimum specifications for pressure control equipment:

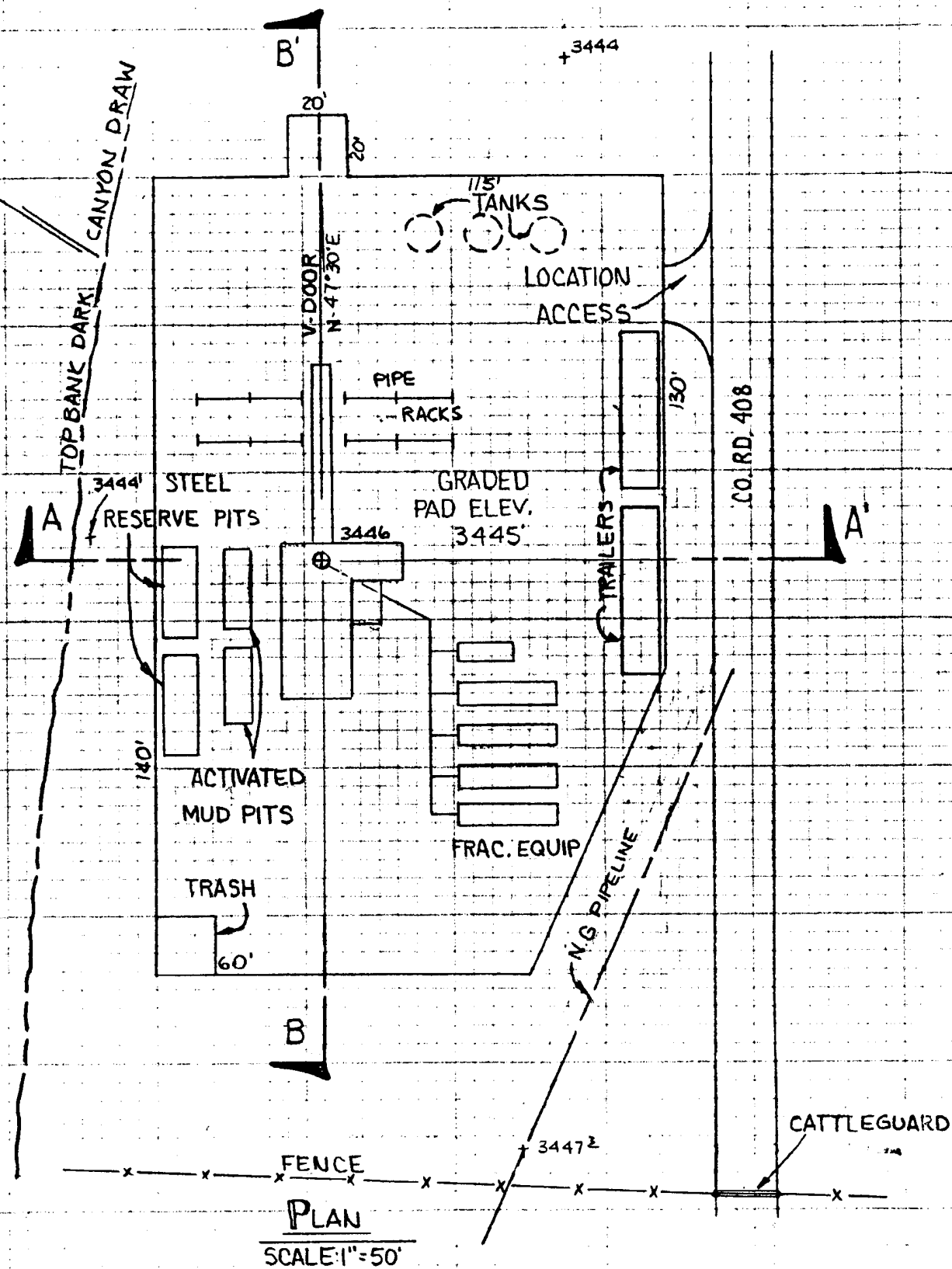
- A. Wellhead Equipment: Thread type, 2000 psi WP for 8-5/8" x 5-1/2" casing program with 2-7/8" tubing hanger.
- B. Blowout Preventers: Refer to attached drawings and lists of equipment titled "Type RRA" for description of BOP stacks and choke manifold.
- C. BOP Control Unit: Unit will be hydraulically operated and have two control systems.
- D. Testing: Upon installation, the Type RRA BOP's for the 8-5/8" surface casing will be tested to a low pressure (200-300 psi) and to a high pressure of 2000 psi. Casing rams will be tested in a like manner. An operational test of the blowout preventers will be performed on each round trip, (but not more than once each day); the annular and pipe ram preventers will be closed on drill pipe and the blind rams will be closed while pipe is out of the hole.



**EXHIBIT "A"**  
**EXXON CO. USA**  
**MARY FEDERAL #4**  
**SECTION 24 T23S, R25E**  
**EDDY CO. N.M.**

W-8214





CENTERLINE WELL IS 1565 FNL & 200 FEL

EXXON'S MARY FEDERAL #4

SE NE SEC. 24, T23 S, R25 E

WEST DARK CANYON EDDY CO., N.M.

EXHIBIT "B"

EXXON COMPANY, U.S.A. (a division of Exxon Corporation)

PRODUCTION DEPARTMENT

DRAWN: Derek Cobb

CHECKED: P.J.B.

ENGR. SECTION: P.J.B.

APPROVED: W.R. Shuck

DATE 10-16-84

SCALE Shown

JOB NO.

FILE NO.

W-B-1947