

Artesia, NM 88210 UNITED STATES

DEPARTMENT OF THE INTERIOR

GEOLOGICAL SURVEY

RECEIVED SUBMIT IN LOCATE\* (Other instructions on reverse side)

Form approved. Budget Bureau No. 12-1-425

30-015-25750

5. LEASE DESIGNATION AND SERIAL NO.

LC-060613

6. IF INDIAN, ALLOTTEE OR TRIBE NAME

7. UNIT AGREEMENT NAME

8. FARM OR LEASE NAME

Big Eddy Unit

9. WELL NO.

10. FIELD AND POOL, OR WILDCAT

Big Eddy Unit

11. SEC., T., R., M., OR BLK. AND SURVEY OR AREA

Section 10-T22S-R28E

12. COUNTY OR PARISH 13. STATE

Eddy N.M.

1a. TYPE OF WORK

DRILL ☒

DEEPEN ☐

PLUG BACK ☐

b. TYPE OF WELL

OIL WELL ☒

GAS WELL ☐

OTHER

SINGLE ZONE ☐

MULTIPLE ZONE ☐

2. NAME OF OPERATOR

MYCO INDUSTRIES, INC.

3. ADDRESS OF OPERATOR

207 South 4th Street, Artesia, New Mexico 88210

4. LOCATION OF WELL (Report location clearly and in accordance with any State requirements.)\*

At surface

990' FNL and 990' FEL

At proposed prod. zone  
same

14. DISTANCE IN MILES AND DIRECTION FROM NEAREST TOWN OR POST OFFICE\*

Approximately 20 miles east of Carlsbad, New Mexico

15. DISTANCE FROM PROPOSED\*

LOCATION TO NEAREST PROPERTY OR LEASE LINE, FT.  
(Also to nearest drlg. unit line, if any)

330'

16. NO. OF ACRES IN LEASE

1156.51

17. NO. OF ACRES ASSIGNED TO THIS WELL

40

18. DISTANCE FROM PROPOSED LOCATION\* TO NEAREST WELL, DRILLING, COMPLETED, OR ABANDONED, ON THIS LEASE, FT.

1200'

19. PROPOSED DEPTH

6200'

20. ROTARY OR CABLE TOOLS

Rotary

21. ELEVATIONS (Show whether DF, RT, GR, etc.)

3/39' ~~3/39'~~ GL

22. APPROX. DATE WORK WILL START\*

ASAP

23.

PROPOSED CASING AND CEMENTING PROGRAM

SIZE OF HOLE	SIZE OF CASING	WEIGHT PER FOOT	SETTING DEPTH	QUANTITY OF CEMENT
12 1/4"	8 5/8"	24# J-55	350'	300 sx circ.
7 7/8"	5 1/2"	14#&15.5# K-55	TD	900 sx circ.

We propose to drill and test the Delaware and intermediate formations. Approximately 350' of surface casing will be set and cement circulated to shut off gravel and caving. If commercial, production casing will be run and cemented with adequate cover, perforated and stimulated as needed for production.

MUD PROGRAM: FW/LCM to 350', Brine & LCM to TD.

BOP PROGRAM: BOP's will be installed at the offset and tested daily.

GAS NOT DEDICATED.

18. ABOVE SPACE DESCRIBE PROPOSED PROGRAM: If proposal is to deepen or plug back, give data on present productive zone and proposed new productive zone. If proposal is to drill or deepen directionally, give pertinent data on subsurface locations and measured and true vertical depths. Give blowout preventer program, if any.

24.

SIGNED

TITLE

Regulatory Agent

DATE 11/6/84

(This space for Federal or State office use)

PERMIT NO.

APPROVAL DATE

APPROVED BY

TITLE

DATE 12-28-84

CONDITIONS OF APPROVAL, IF ANY

APPROVAL SUBJECT TO  
GENERAL REQUIREMENTS AND  
SPECIAL STIPULATIONS

ATTACHED

NEW MEXICO OIL CONSERVATION COMMISSION  
LOCATION AND ACREAGE DEDICATION PLAT

Form C-102  
Supersedes C-128  
Effective 1-1-65

All distances must be from the outer boundaries of the Section.

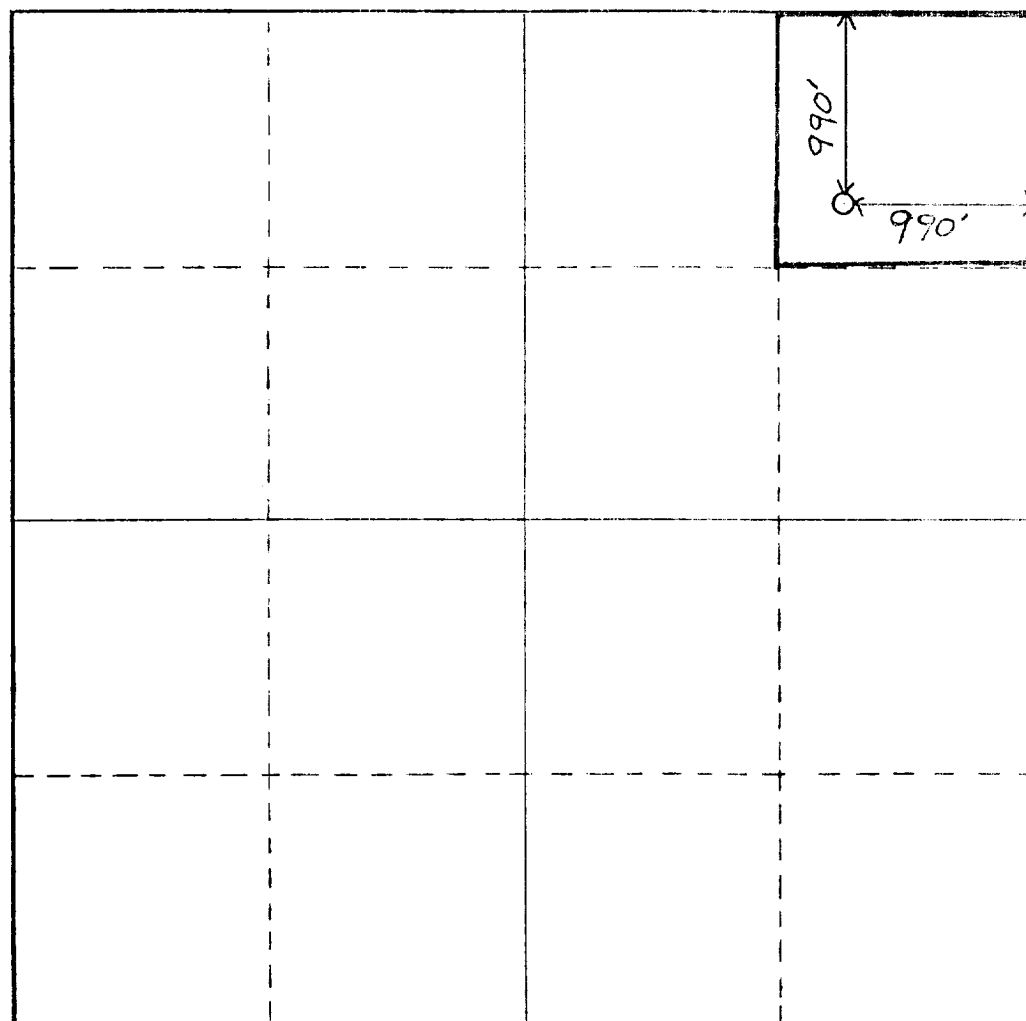
Operator <b>MYCO INDUSTRIES, INC.</b>		Lease <b>1000</b>		Well No. <b>3</b>
Unit Letter <b>A</b>	Section <b>10</b>	Township <b>22 South</b>	Range <b>28 East</b>	County <b>Eddy</b>
Actual Footage Location of Well: 990 feet from the North line and 990 feet from the East line				
Ground Level Elev. <b>3339' GL</b>	Producing Formation <b>Delaware</b>	Pool <b>UNDES Delaware</b>	Dedicated Acreage: <b>40</b> Acres	

1. Outline the acreage dedicated to the subject well by colored pencil or hatchure marks on the plat below.
2. If more than one lease is dedicated to the well, outline each and identify the ownership thereof (both as to working interest and royalty).
3. If more than one lease of different ownership is dedicated to the well, have the interests of all owners been consolidated by communitization, unitization, force-pooling, etc?

☐ Yes ☒ No If answer is "yes," type of consolidation \_\_\_\_\_

If answer is "no," list the owners and tract descriptions which have actually been consolidated. (Use reverse side of this form if necessary.) \_\_\_\_\_

No allowable will be assigned to the well until all interests have been consolidated (by communitization, unitization, forced-pooling, or otherwise) or until a non-standard unit, eliminating such interests, has been approved by the Commission.



CERTIFICATION

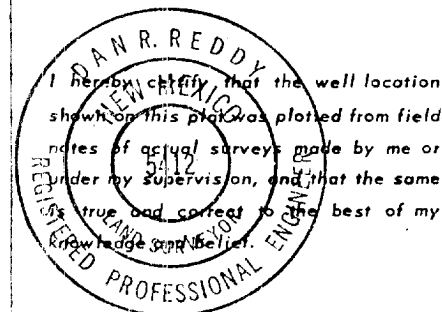
I hereby certify that the information contained herein is true and complete to the best of my knowledge and belief.

*Cy Cowan*  
Name **Cy Cowan**

Position  
**Regulatory Agent**

Company  
**Myco Industries, Inc.**

Date  
**11/6/84**



Date Surveyed  
**10/30/84**

Registered Professional Engineer and/or Land Surveyor

*Dan R. Reddy*  
Certificate No.  
**NM PE&LS #5412**

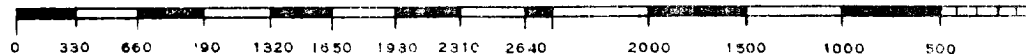
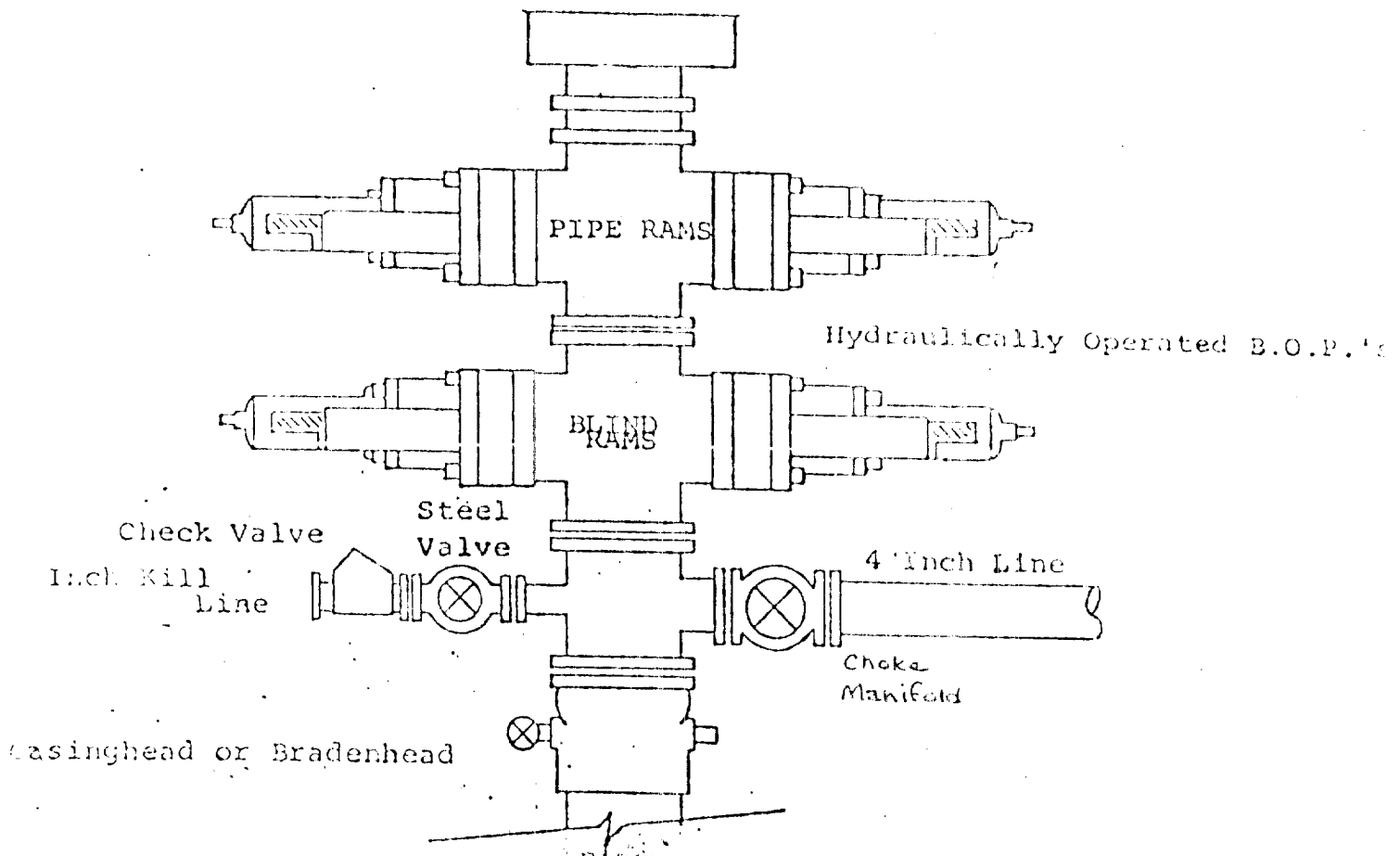


EXHIBIT B  
BDP DIAGRAM  
RATED 3000<sup>#</sup>



MYCO INDUSTRIES, INC.  
Hole in the Ground Federal #3  
990' FNL and 990' FEL  
Section 10--T22S--R28E  
Eddy County, New Mexico

In conjunction with Form 9-331C, Application for Permit to Drill subject well, Yates Petroleum Company submits the following ten items of pertinent information in accordance with BLM requirements.

1. The geologic surface formation is sand dunes.
2. The estimated tops of geologic markers are as follows:

Salt	280'
Base Salt	2324'
Delaware	2611'
Bone Spring	6057'
TD	6200'

3. The estimated depths at which anticipated water, oil or gas formations are expected to be encountered:

Water: 200-350'

Oil or Gas: 6100'

4. Proposed Casing Program: See Form 9-331C.
5. Pressure Control Equipment: See Form 9-331C.
6. Mud Program: See Form 9-331C.
7. Auxiliary Equipment: Kelly Cock; pit level indicators and flow sensor equipment; sub with full-opening valve on floor, drill pipe connection.
8. Testing, Logging and Coring Program:

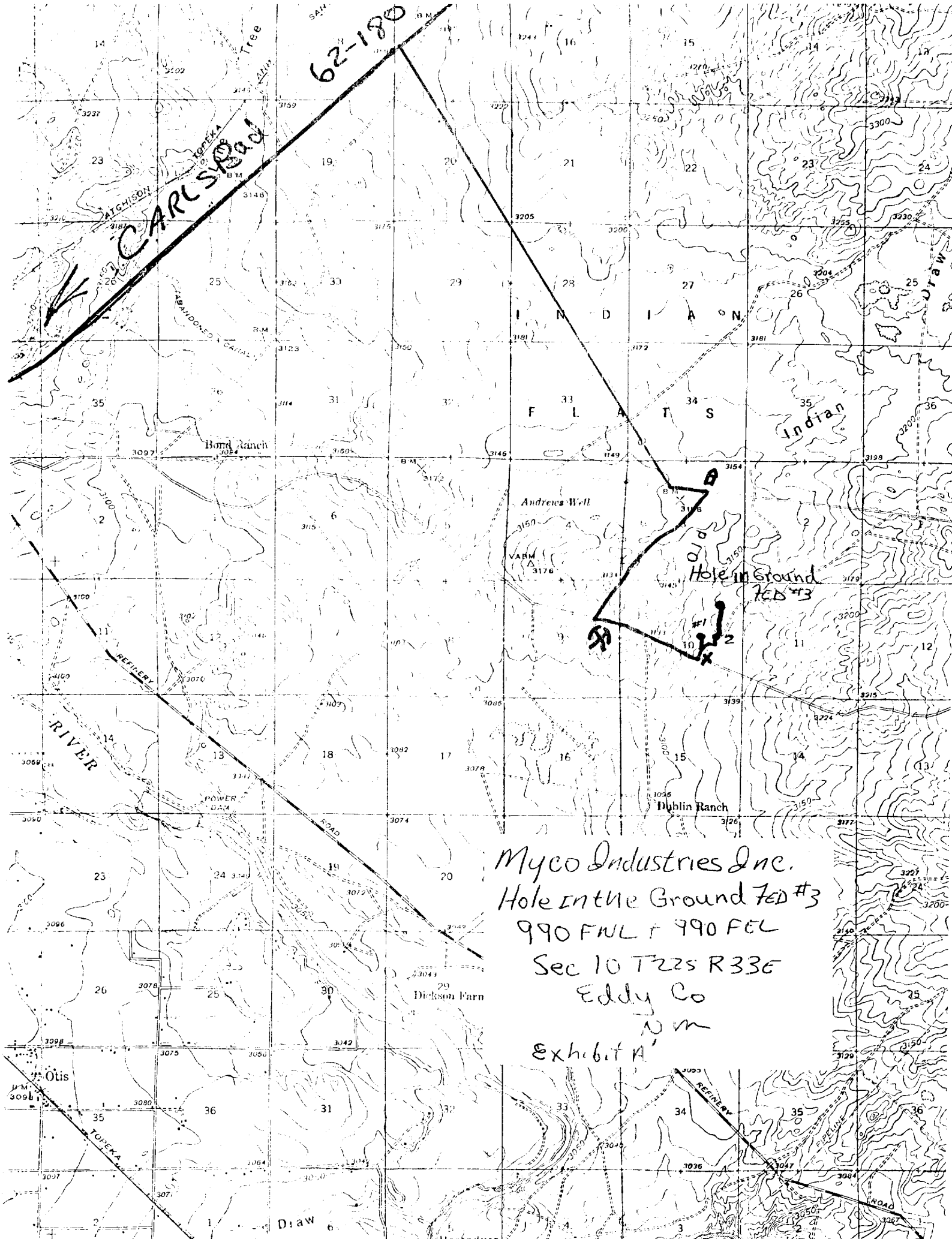
Samples: 10' samples out from under surface csg.

DST's: None

Logging: CNL-LDT TD to csg with GR-CNL on up to surface; DLL with RxO TD-csg  
Ept TD-csg.

Mud Logging: One man unit 2000' - TD.

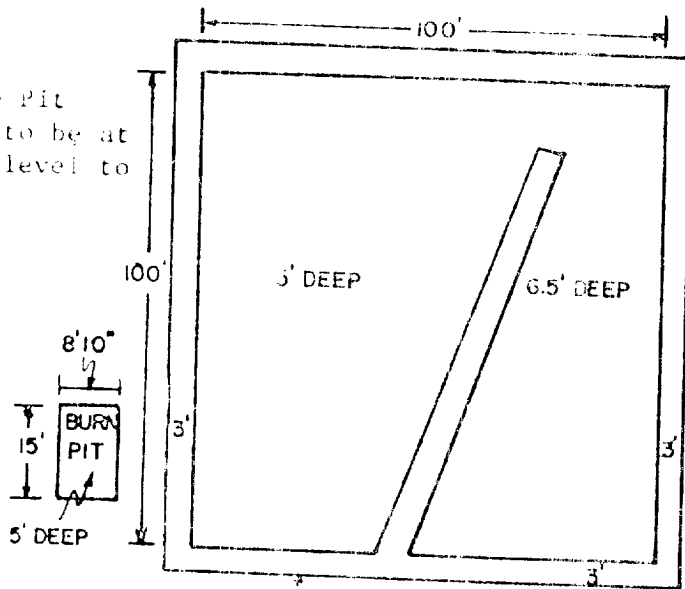
9. No abnormal pressures or temperatures are anticipated.
10. Anticipated starting date: As soon as possible after approval.



# YATES PETROLEUM CORP.

## Exhibit C

Reserve Pit  
bottom to be at  
ground level to  
1 ft.



NOTE:

inside walls must be as  
high and wide as outer  
walls of pit.

