

RECEIVED BY

JUN 20 1985

UNITED STATES
DEPARTMENT OF THE INTERIOR

GEOLOGICAL SURVEY

APPLICATION FOR PERMIT TO DRILL, DEEPEN, OR PLUG BACK

1. TYPE OF WORK

ARTESIA, OFFICE DRILL ☒DEEPEN ☐PLUG BACK ☐

2. TYPE OF WELL

OIL WELL ☒GAS WELL ☐OTHER ☐SINGLE ZONE ☐MULTIPLE ZONE ☐

3. NAME OF OPERATOR

MYCO Industries, Inc.

4. ADDRESS OF OPERATOR

207 South Fourth Street - Artesia, NM 88210

5. LOCATION OF WELL (Report location clearly and in accordance with any State requirements.*)

At surface 1140' FNL & 330' FEL (Unit A)

At proposed prod. zone

Same

6. DISTANCE IN MILES AND DIRECTION FROM NEAREST TOWN OR POST OFFICE*

Approximately 20 miles east of Carlsbad, New Mexico

7. DISTANCE FROM PROPOSED*

LOCATION TO NEAREST
PROPERTY OR LEASE LINE, FT.

(Also to nearest drlg. unit line, if any)

330'

8. NO. OF ACRES IN LEASE

1156.51

9. DISTANCE FROM PROPOSED LOCATION*
TO NEAREST WELL, DRILLING, COMPLETED,
OR APPLIED FOR, ON THIS LEASE, FT.

10. PROPOSED DEPTH

6100'

11. NO. OF ACRES ASSIGNED
TO THIS WELL

40

12. ROTARY OR CABLE TOOLS

Rotary

13. ELEVATIONS (Show whether DF, RT, GR, etc.)

3136'

14. APPROX. DATE WORK WILL START*

ASAP

15.

PROPOSED CASING AND CEMENTING PROGRAM

SIZE OF HOLE	SIZE OF CASING	WEIGHT PER FOOT	SETTING DEPTH	QUANTITY OF CEMENT
12-1/4"	8-5/8"	24# K-55	400'	300 sacks - circulate
7-7/8"	5-1/2"	15.5# K-55	6100'	900 sacks - circulate

We propose to drill and test the Delaware and intermediate formations. Approximately 400' of surface casing will be set and cement circulated to shut off gravel and cavings. If commercial, production casing will be run and cemented with adequate cover, perforated and stimulated as needed for production.

MUD PROGRAM: FW/LCM to 400'; brine & LCM to TD.

BOP PROGRAM: BOP's will be installed at the offset and tested daily.

IN ABOVE SPACE DESCRIBE PROPOSED PROGRAM: If proposal is to deepen or plug back, give data on present productive zone and proposed new productive zone. If proposal is to drill or deepen directionally, give pertinent data on subsurface locations and measured and true vertical depths. Give blowout preventer program, if any.

24.

SIGNED

Clifton May

TITLE

Regulatory Agent

DATE

June 4, 1985

(This space for Federal or State office use)

PERMIT NO.

APPROVAL DATE

APPROVED BY

Don Ward

TITLE

DATE

6-14-85

CONDITIONS OF APPROVAL IF ANY:

Subject to
Like Approval
by State

Unorthodox
location

APPROVAL SUBJECT TO
GENERAL REQUIREMENTS AND
SPECIAL STIPULATIONS
ATTACHED

Posted 101
APR 14
9-28-85

NEW MEXICO OIL CONSERVATION COMM. ON
WELL LOCATION AND ACREAGE DEDICATION PLAT

Form C-102
Supersedes C-128
Effective 1-1-65

All distances must be from the outer boundaries of the Section.

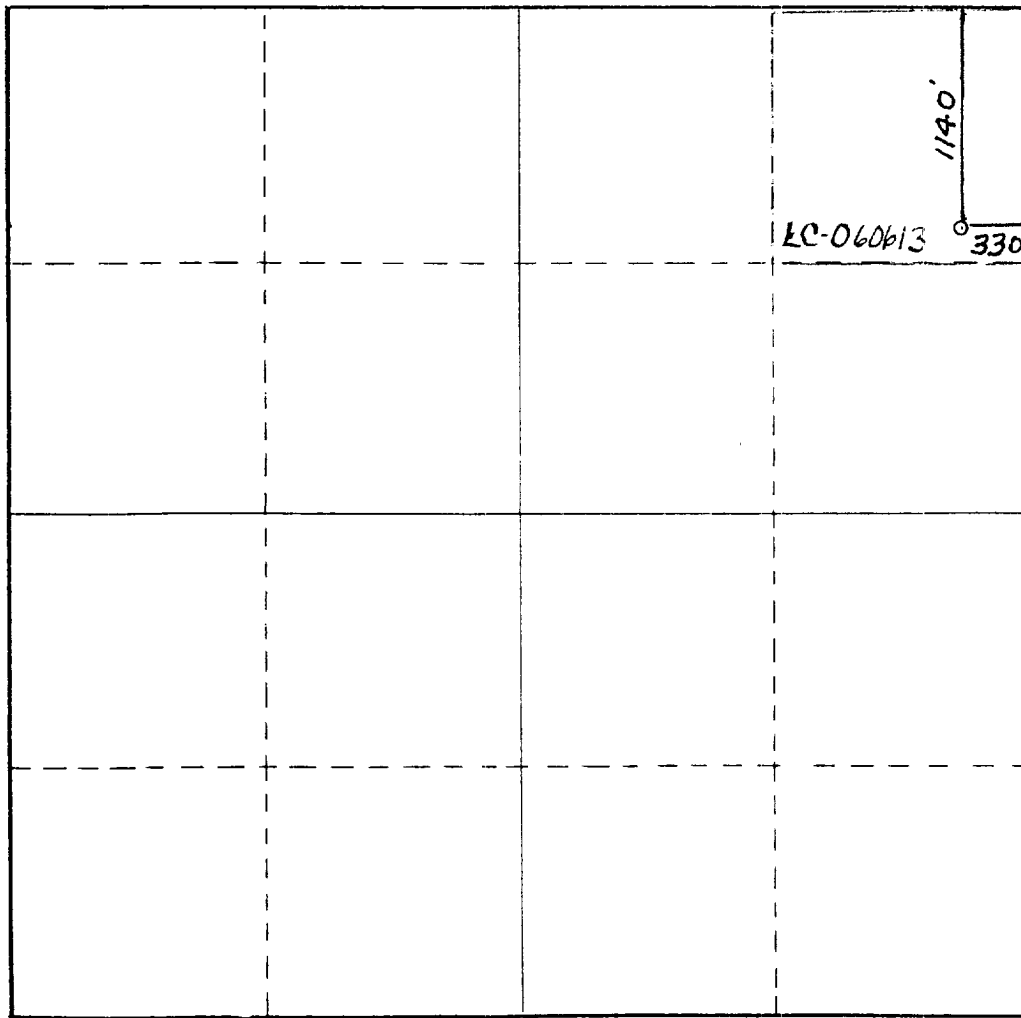
Operator MYCO INDUSTRIES INC.			Lease BIG EDDY UNIT		Well No. 111
Unit Letter A	Section 9	Township 22 South	Range 28 East	County Eddy	
Actual Footage Location of Well: 1140 feet from the North line and 330 feet from the East line					
Ground Level Elev. 3136	Producing Formation DELAWARE		Pool UNDES DELAWARE		Dedicated Acreage: 40 Acres

1. Outline the acreage dedicated to the subject well by colored pencil or hachure marks on the plat below.
2. If more than one lease is dedicated to the well, outline each and identify the ownership thereof (both as to working interest and royalty).
3. If more than one lease of different ownership is dedicated to the well, have the interests of all owners been consolidated by communitization, unitization, force-pooling, etc?

☐ Yes ☐ No If answer is "yes," type of consolidation _____

If answer is "no," list the owners and tract descriptions which have actually been consolidated. (Use reverse side of this form if necessary.) _____

No allowable will be assigned to the well until all interests have been consolidated (by communitization, unitization, forced-pooling, or otherwise) or until a non-standard unit, eliminating such interests, has been approved by the Commission.



CERTIFICATION

I hereby certify that the information contained herein is true and complete to the best of my knowledge and belief.

Clifton May

Name
Clifton May
Position
Regulatory Agent
Company
Yates Petroleum Corporation
Date
June 4, 1985

I hereby certify that the well location shown on this plat was plotted from field notes of actual surveys made by me or under my supervision, and that the same is true and correct to the best of my knowledge and belief.

Date Surveyed
5/30/85
Registered Professional Engineer and/or Land Surveyor

Don R. Reddy
Certificate No.

NMPE&LS #5412

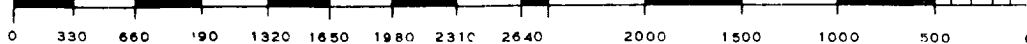
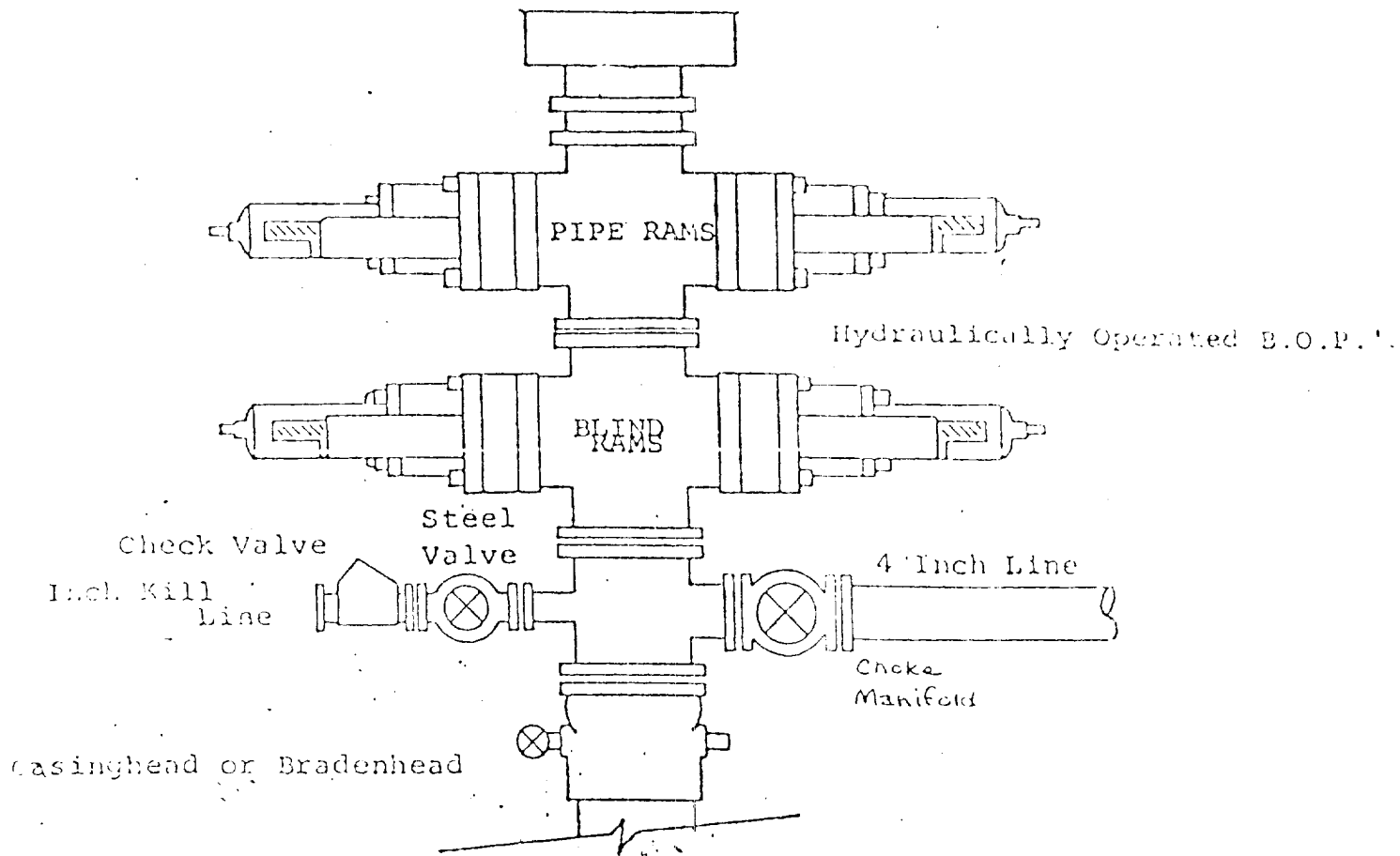


EXHIBIT B

BDP DIAGRAM

RATED 3000[#]



MYCO INDUSTRIES, INC.
Big Eddy Unit #111
1140' FNL and 330' FEL of
Section 9-T22S-R28E
Eddy County, New Mexico

In conjunction with Form 9-331C, Application for Permit to Drill subject well, MYCO Industries, Inc. submits the following ten items of pertinent information in accordance with BLM requirements.

1. The geologic surface formation is sand dunes.

2. The estimated tops of geologic markers are as follows:

Salt	291'
Base of Salt	2254'
Delaware	2552'
Bone Springs	5989'
TD	6050'

3. The estimated depths at which anticipated water, oil or gas formations are expected to be encountered:

Water: Water 200-350'

Oil or Gas: 6000'

4. Proposed Casing Program: See Form 9-331C.

5. Pressure Control Equipment: See Form 9-331C.

6. Mud Program: See Form 9-331C.

7. Auxiliary Equipment: Kelly Cock; pit level indicators and flow sensor equipment; sub with full-opening valve on floor, drill pipe connection.

8. Testing, Logging and Coring Program:

Samples: 10' samples caught out from under surface casing to TD.

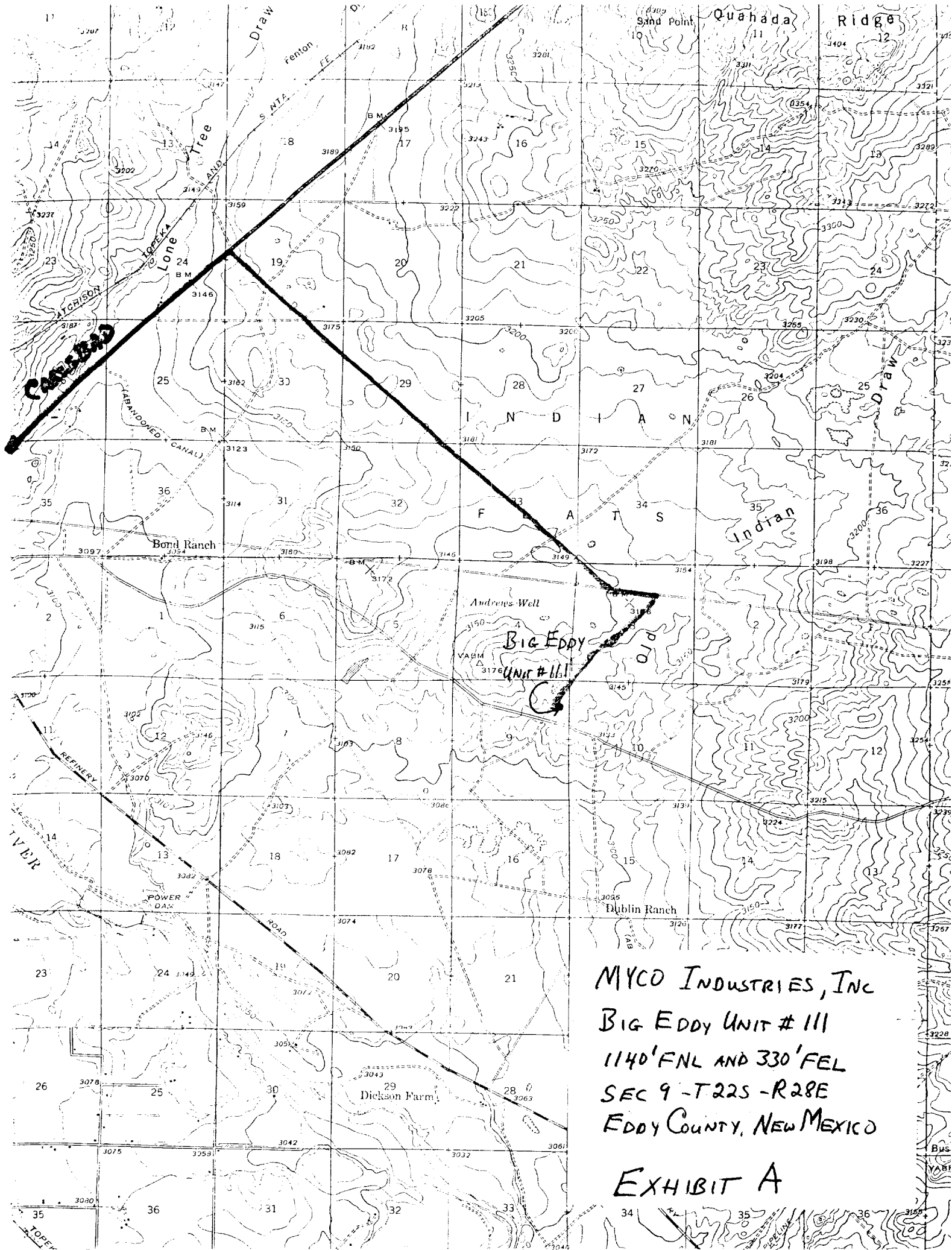
DST's: None

Logging: CNL-LDT from TD to casing with GR-CNL on to surface; DLL w/Rxo from TD to surface casing; EPT from TD to casing.

Mudlogging: One man unit on at 2000' to TD.

9. No abnormal pressures or temperatures are anticipated.

10. Anticipated starting date: As soon as possible after approval.



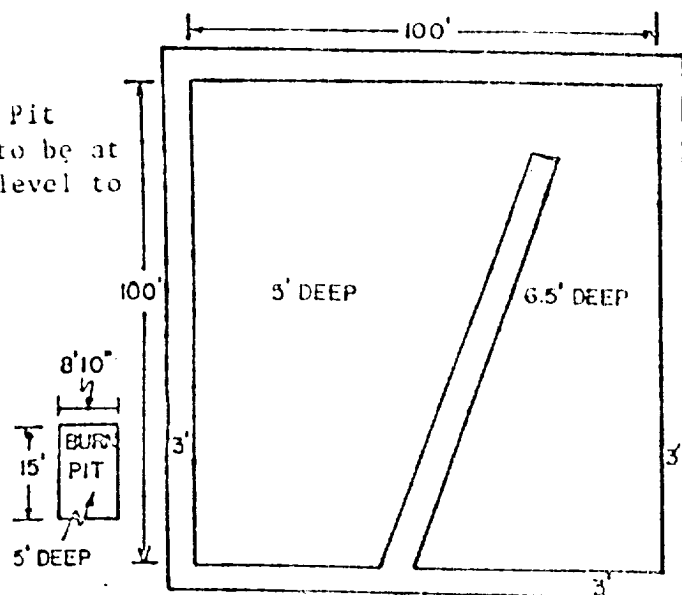
MYCO INDUSTRIES, INC
BIG EDDY UNIT # 111
1140' FNL AND 330' FEL
SEC 9 - T22S - R28E
EDDY COUNTY, NEW MEXICO

EXHIBIT A

YATES PETROLEUM CORP.

Exhibit C

Reserve Pit
bottom to be at
ground level to
1 ft.



NOTE:

Inside walls must be as
high and wide as outer
walls of pit.

