

NO. OF COPIES RECEIVED	
DISTRIBUTION	
SANTA FE	✓
FILE	✓
U.S.G.S.	2
LAND OFFICE	✓
OPERATOR	✓

RECEIVED BY O. DOK 2088  
SANTA FE, NEW MEXICO 87501  
001 11 1985  
O. C. D.  
ARTESIA, OFFICE

5A. Indicate Type of Lease  
STATE ☒ WELL ☐  
5. State Oil & Gas Lease No.  
L-6867-3

APPLICATION FOR PERMIT TO DRILL, DEEPEN, OR PLUG BACK

1a. Type of Work  
b. Type of Well  
OIL WELL ☒ GAS WELL ☐ OTHER ☐  
c. Name of Operator  
The Eastland Oil Company ✓  
d. Address of Operator  
P.O. Drawer 3488, Midland, Texas 79702  
e. Location of Well  
UNIT LETTER F LOCATED 1652 FEET FROM THE North LINE  
AND 2283 FEET FROM THE West LINE OF SEC. 32 TWP. 22S R. 28E N.M.P.M.

7. Unit Agreement Name  
8. Farm or Lease Name  
State "32"  
9. Well No.  
4  
10. Field and Pool, or Wildcat  
Herradura Bend (Delaware)  
11. County  
Eddy

15. Proposed Depth 2500  
16A. Formation Delaware  
16B. Rotary or C.T. Cable Tool  
17. Existing Wells (Name, Depth, etc.)  
3040' GR 3041' DF  
18A. Kind & Status Plug. Bond Blanket on File  
18B. Drilling Contractor Hopi Drilling Co.  
22. Approx. Date Work will start  
October 21, 1985

PROPOSED CASING AND CEMENT PROGRAM

SIZE OF HOLE	SIZE OF CASING	WEIGHT PER FOOT	SETTING DEPTH	SACKS OF CEMENT	EST. TOP
12 1/4"	8-5/8"	24#	375'	250 sx Class C	Circulate
8"	4-1/2"	9.5#	2500'	200 sx 50-50 Poz-mix 250 sx Lite	Circulate

Drill 8" hole to top of first Delaware sand at approximately 2500' and reduce to 6" before drilling in. Set 4 1/2" casing on top of sand with packer shoe and complete open hole.

Control head installed on 8-5/8" surface casing.

Gamma Ray Log will be run from total depth to bottom of surface casing.

APPROVAL VALID FOR 180 DAYS  
PERMIT EXPIRES 4-10-86  
UNLESS DRILLING UNDERWAY

2. ABOVE SPACE DESCRIBE PROPOSED PROGRAM; IF PROPOSAL IS TO DEEPEN OR PLUG BACK, GIVE DATA ON PRESENT PRODUCTIVE ZONE AND PROPOSED NEW PRODUCTIVE ZONE. GIVE BLOWOUT PREVENTER PROGRAM, IF ANY.

I hereby certify that the information above is true and complete to the best of my knowledge and belief.

Signed George D. Neal Title Vice President-Production Date October 10, 1985

(This space for State Use)

Original Signed By  
Mike Williams  
Oil & Gas Inspector

OCT 10 1985

APPROVED BY \_\_\_\_\_ DATE \_\_\_\_\_

CONDITIONS OF APPROVAL, IF ANY: \* As Noted Above

NEW MEXICO OIL CONSERVATION COMMISSION  
WELL LOCATION AND ACREAGE DEDICATION PLAT

FILED OCT 11 1985

OCT 11 1985

Form C-102  
Supersedes C-128  
Effective 1-1-65

O. C. D.

ARTESIA, OFFICE

All distances must be from the outer boundaries of the Section.

Operator THE EASTLAND OIL COMPANY	Lease STATE 32	Well No. 4
--------------------------------------	-------------------	---------------

Unit Letter F	Section 32	Township 22-SOUTH	Range 28-EAST	County EDDY
------------------	---------------	----------------------	------------------	----------------

Actual Footage Location of Well: 1652 feet from the NORTH line and 2283 feet from the WEST line
--

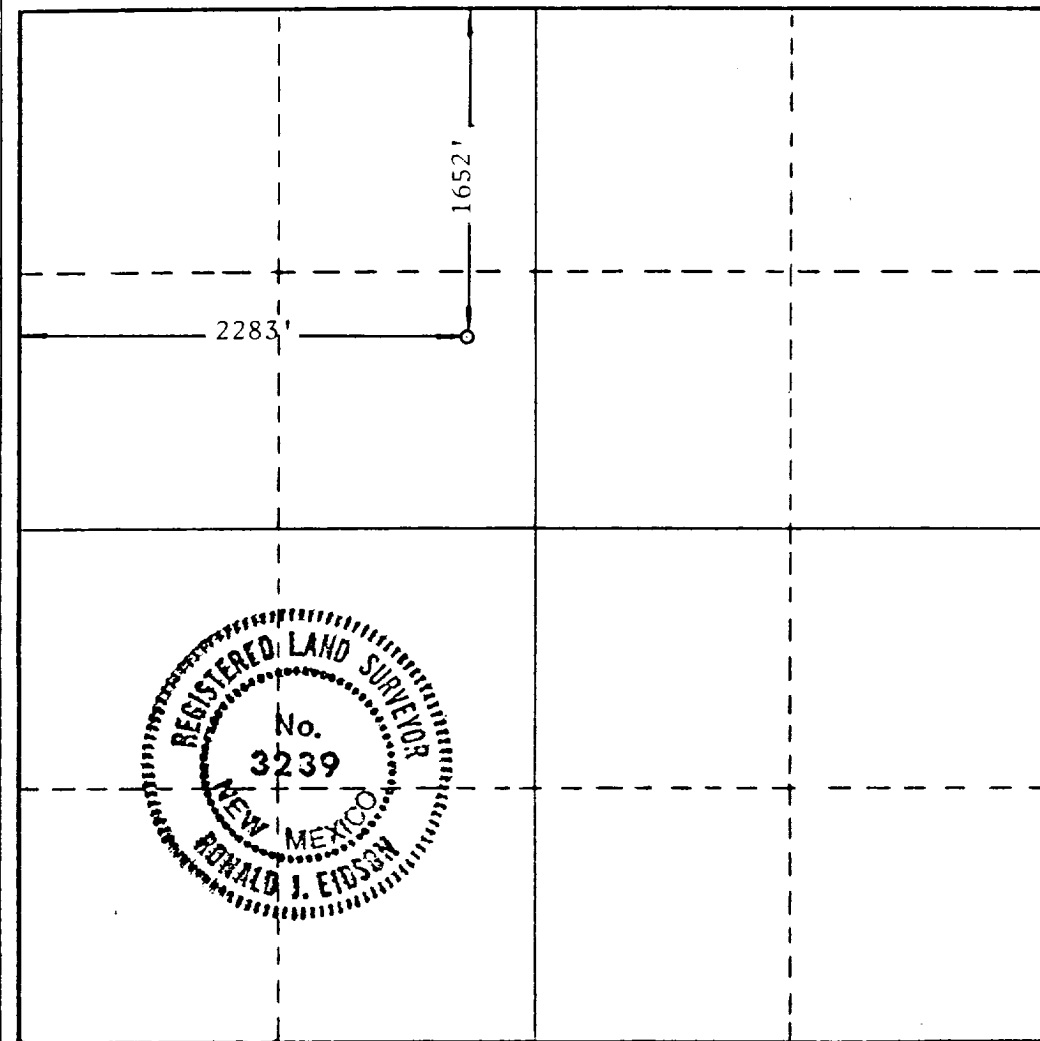
Ground Level Elev. 3039.6'	Producing Formation Delaware Sand	Pool Herradura Bend (Delaware)	Dedicated Acreage: 40 40 Acres
-------------------------------	--------------------------------------	-----------------------------------	-----------------------------------

1. Outline the acreage dedicated to the subject well by colored pencil or hachure marks on the plat below.
2. If more than one lease is dedicated to the well, outline each and identify the ownership thereof (both as to working interest and royalty).
3. If more than one lease of different ownership is dedicated to the well, have the interests of all owners been consolidated by communitization, unitization, force-pooling, etc?

☐ Yes ☐ No If answer is "yes," type of consolidation \_\_\_\_\_

If answer is "no," list the owners and tract descriptions which have actually been consolidated. (Use reverse side of this form if necessary.) \_\_\_\_\_

No allowable will be assigned to the well until all interests have been consolidated (by communitization, unitization, forced-pooling, or otherwise) or until a non-standard unit, eliminating such interests, has been approved by the Commission.



CERTIFICATION

I hereby certify that the information contained herein is true and complete to the best of my knowledge and belief.

Name  
George D. Neal

Position  
Vice President-Production

Company  
The Eastland Oil Company

Date  
October 10, 1985

I hereby certify that the well location shown on this plat was plotted from field notes of actual surveys made by me or under my supervision, and that the same is true and correct to the best of my knowledge and belief.

Date Surveyed  
OCTOBER 7, 1985

Registered Professional Engineer  
and/or Land Surveyor

*Ronald J. Eidson*

Certificate No. JOHN W. WEST, 676  
RONALD J. EIDSON, 3239

0 330 660 990 1320 1650 1980 2310 2640 2970 3300 3630 3960 4290 4620 4950 5280 5610 5940 6270 6600