

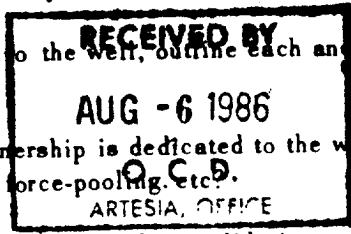
NE. CO OIL CONSERVATION CO SSIR
WELL LOCATION AND ACREAGE DEDICATION PLAT

Form C-102
Supersedes C-128
Effective 1-1-65

All distances must be from the outer boundaries of the Section

Operator TXO PRODUCTION CORP. ✓		Lease DELTA FEE "C"		Well No. 1
Unit Letter C	Section 12	Township 22S	Range 27E	County EDDY
Actual Footage Location of Well: 1980 feet from the WEST line and 990 feet from the NORTH line				
Ground Level Elev. 3093.2	Producing Formation WOLFCAMP	Pool EAST CARLSBAD WOLFCAMP GAS	Dedicated Acreage: 320 Acres	

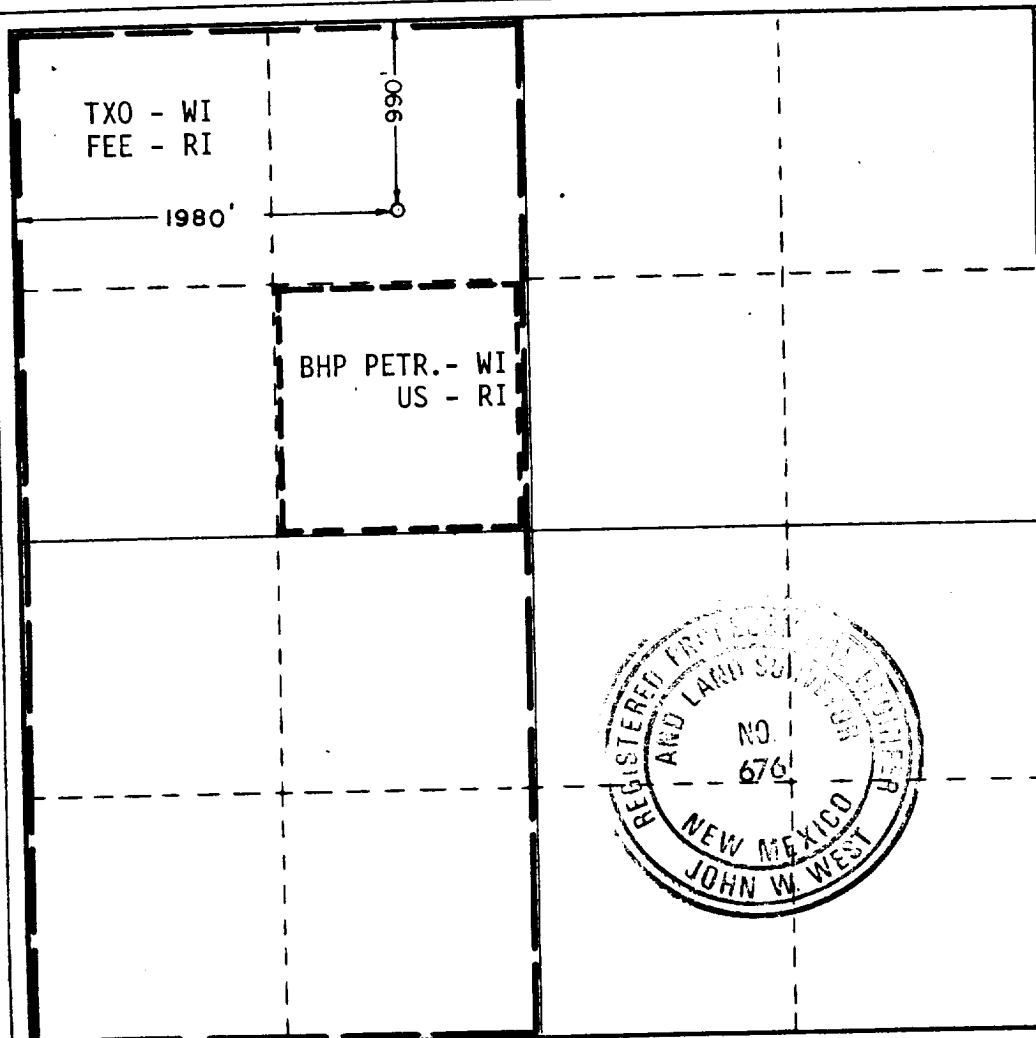
1. Outline the acreage dedicated to the subject well by colored pencil or hachure marks on the plat below.
2. If more than one lease is dedicated to the well, outline each and identify the ownership thereof (both as to working interest and royalty).
3. If more than one lease of different ownership is dedicated to the well, have the interests of all owners been consolidated by communitization, unitization, force-pooling, etc?



☐ Yes ☒ No If answer is "yes," type of consolidation TO BE COMMUNITIZED

If answer is "no," list the owners and tract descriptions which have actually been consolidated. (Use reverse side of this form if necessary.)

No allowable will be assigned to the well until all interests have been consolidated (by communitization, unitization, forced-pooling, or otherwise) or until a non-standard unit, eliminating such interests, has been approved by the Commission.



CERTIFICATION

I hereby certify that the information contained herein is true and complete to the best of my knowledge and belief.

Name Arthur R. Brown

Position
Agent

Company
TXO PRODUCTION CORP.

Date
AUGUST 5, 1986

I hereby certify that the well location shown on this plat was plotted from field notes of actual surveys made by me or under my supervision, and that the same is true and correct to the best of my knowledge and belief.

Date Surveyed
JULY 30, 1986

Registered Professional Engineer and/or Land Surveyor

John W. West
Certificate No. **JOHN W. WEST, 676**
RONALD J. EIDSON, 3239

EXH

