

STATE OF NEW MEXICO
ENERGY AND MINERALS DEPARTMENT

OIL CONSERVATION DIVISION

POST OFFICE BOX 208
SANTA FE, NEW MEXICO 87501

NOV 20 1985

O. C. D.
ARTESIA OFFICE

Form C-101

Revised 1-1-65

30-015-25486

5A. Indicate Type of Lease

State ☐ Fee ☒

5. State Oil & Gas Lease No.

XXXXXXXXXXXXXXXXXXXXXXXXXXXX

XXXXXXXXXXXXXXXXXXXXXXXXXXXX

7. Unit Agreement Name

8. Farm or Lease Name

Cass Draw

9. Well No.

2

10. Field and Pool, or Wildcat

Wildcat Delaware

XXXXXXXXXXXXXXXXXXXXXXXXXXXX

XXXXXXXXXXXXXXXXXXXXXXXXXXXX

XXXXXXXXXXXXXXXXXXXXXXXXXXXX

12. County

XXXXXXXXXXXXXXXXXXXX

Eddy

XXXXXXXXXXXXXXXXXXXX

19. Proposed Depth

2500'

19A. Formation

Delaware

20. Rotary or C.T.

Rotary & C.T.

21. Elevations (Show whether DF, RT, etc.)

3100.7' GL

21A. Kind & Status Plug Bond

Statewide

21B. Drilling Contractor

Salazar Drilling Co.

22. Approx. Date Work will start

December 1, 1985

23. PROPOSED CASING AND CEMENT PROGRAM

SIZE OF HOLE	SIZE OF CASING	WEIGHT PER FOOT	SETTING DEPTH	SACKS OF CEMENT	EST. TOP
* 12 1/4	8 5/8"	24#	400'	250sx	Circ.
7 7/8"	5 1/2"	17#	2420'	700sx	Circ.
4 3/4"	Open Hole	-	2500'	-	-

We propose to drill a 2500' well to test the Upper Delaware production. Approximately 400' of 8 5/8" surface casing will be set and cemented to protect the surface water. The Delaware will be completed through an open hole from 2420' to 2500' with a cable tool rig.

Mud: 0'-400' FW Spud Mud
400'-2420' Brine Water 28-30 v/s
2420'-2500' No fluid

APPROVAL VALID FOR 180 DAYS
PERMIT EXPIRES 6-21-86
UNLESS DRILLING UNDERWAY

BOP Program: 400'-2420' Regan 10" Annular BOP 2000psi WP with hydraulic closing unit
2420'-2500' Diverter with 5" full opening valve

Posted API,
IDI, NL
11-22-85

IN ABOVE SPACE DESCRIBE PROPOSED PROGRAM: IF PROPOSAL IS TO DEEPEN OR PLUG BACK, GIVE DATA ON PRESENT PRODUCTIVE ZONE AND PROPOSED NEW PRODUCTIVE ZONE. GIVE BLOWOUT PREVENTER PROGRAM, IF ANY.

I hereby certify that the information above is true and complete to the best of my knowledge and belief.

SIGNED [Signature] TITLE Drilling & Production Manager DATE

(This space for State Use) Original Signed By
Mike Williams

APPROVED BY Oil & Gas Inspector

CONDITIONS OF APPROVAL, IF ANY: * As Noted Above

DATE NOV 21 1985

**NEW MEXICO OIL CONSERVATION COMMISSION
WELL LOCATION AND ACREAGE DEDICATION PLAT**

Form C-102
Supersedes C-120
Effective 1-1-65

All distances must be from the outer boundaries of the Section

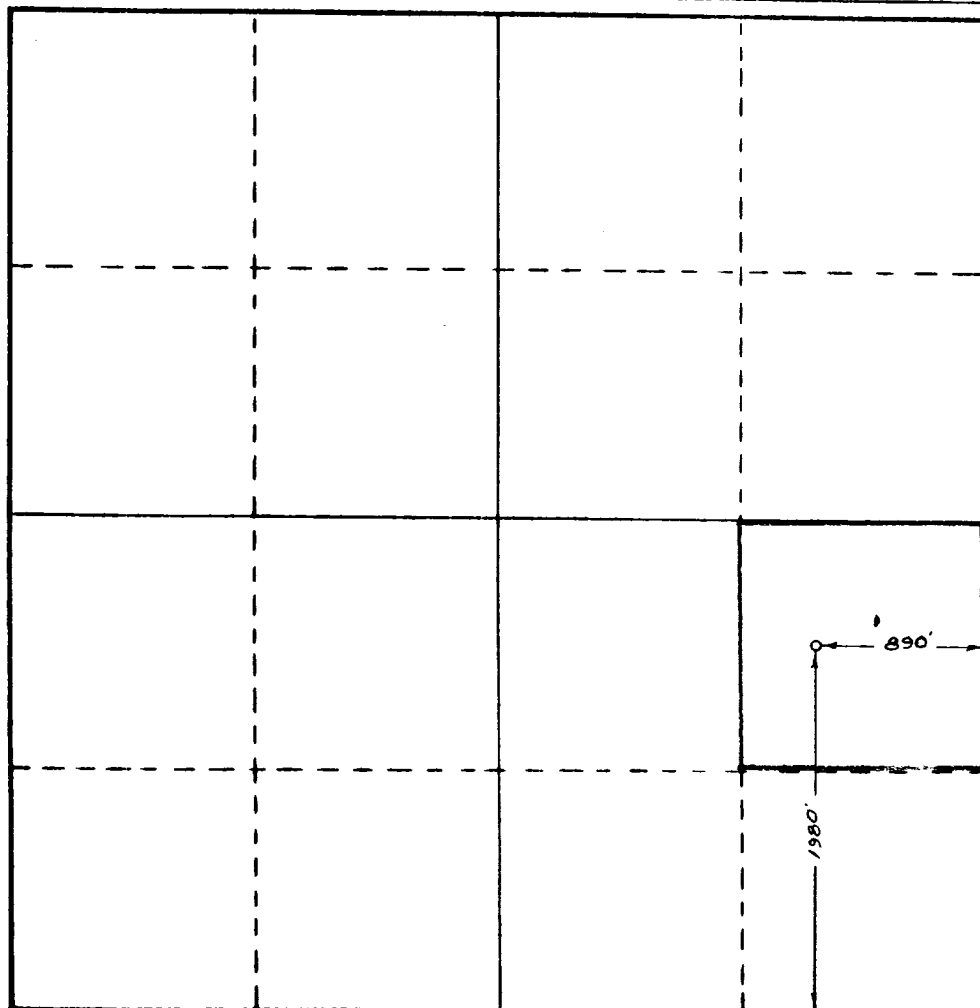
Operator READ AND STEVENS INC.			Lease CASS DRAW		Well No. 2
Unit Letter I	Section 24	Township 23 South	Range 27 East	County Eddy	
Actual Footage Location of Well: 1980 feet from the South line and 890 feet from the East line					
Ground Level Elev. 3100.7	Producing Formation Delaware		Pool Wildcat		Dedicated Acreage: 40.0 Acres

1. Outline the acreage dedicated to the subject well by colored pencil or hachure marks on the plat below.
2. If more than one lease is dedicated to the well, outline each and identify the ownership thereof (both as to working interest and royalty).
3. If more than one lease of different ownership is dedicated to the well, have the interests of all owners been consolidated by communitization, unitization, force-pooling, etc?

☐ Yes ☐ No If answer is "yes," type of consolidation _____

If answer is "no," list the owners and tract descriptions which have actually been consolidated. (Use reverse side of this form if necessary.) _____

No allowable will be assigned to the well until all interests have been consolidated (by communitization, unitization, forced-pooling, or otherwise) or until a non-standard unit, eliminating such interests, has been approved by the Commission.



CERTIFICATION

I hereby certify that the information contained herein is true and complete to the best of my knowledge and belief.

Tricia L. Boardman
Name

Tricia L. Boardman
Position

Authorized Agent
Company

Read & Stevens, Inc.
Date

November 19, 1985

I hereby certify that the location shown on this plat was plotted in the field notes of actual surveys made by me or under my supervision, and that the same is true and correct to the best of my knowledge and belief.



Date Surveyed
11/11/85

Registered Professional Engineer
and/or Land Surveyor

Herschel L. Jones
Certificate No. **3640**

