

MEXICO OIL CONSERVATION COMMISSION WELL LOCATION AND ACREAGE DEDICATION PLAT

Form C-102
Supersedes C-128
Effective 1-1-65

All distances must be from the outer boundaries of the Section

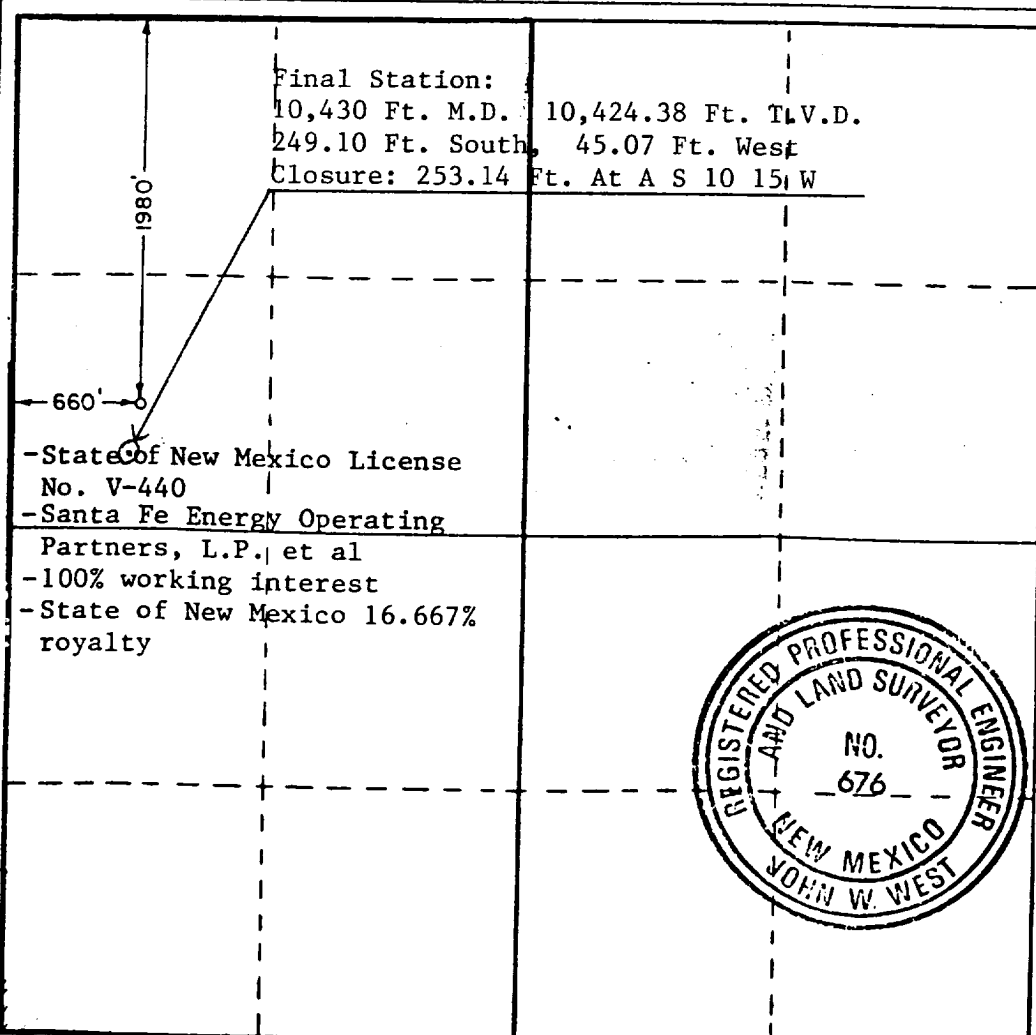
Operator SANTA FE ENERGY OPERATING PARTNERS L.P.			Lease H.B. STATE		Well No. 1
Unit Letter E	Section 2	Township 24 SOUTH	Range 29 EAST	County EDDY	
Actual Footage Location of Well: <div style="display: flex; justify-content: space-between;"> 1980 feet from the NORTH line and 660 feet from the WEST line </div>					
Ground Level Elev. 3066.5	Producing Formation Morrow	Pool Undes. Cedar Canyon		Dedicated Acreage: 320 Acres	

1. Outline the acreage dedicated to the subject well by colored pencil or hachure marks on the plat below.
2. If more than one lease is dedicated to the well, outline each and identify the ownership thereof (both as to working interest and royalty).
3. If more than one lease of different ownership is dedicated to the well, have the interests of all owners been consolidated by communitization, unitization, force-pooling, etc?

☐ Yes ☒ No If answer is "yes," type of consolidation _____

If answer is "no," list the owners and tract descriptions which have actually been consolidated. (Use reverse side of this form if necessary.) one lease - Santa Fe Energy Operating Partners, L.P.

No allowable will be assigned to the well until all interests have been consolidated (by communitization, unitization, forced-pooling, or otherwise) or until a non-standard unit, eliminating such interests, has been approved by the Commission.



CERTIFICATION

I hereby certify that the information contained herein is true and complete to the best of my knowledge and belief.

Mike Burton

Name
Mike Burton

Position
Sr. Drilling Engineer

Company
Santa Fe Energy Operating Partners, L.P.

Date
9-8-86

I hereby certify that the well location shown on this plat was plotted from field notes of actual surveys made by me or under my supervision, and that the same is true and correct to the best of my knowledge and belief.

Date Surveyed
August 28, 1986

Registered Professional Engineer and/or Land Surveyor
John W. West

Certificate No. **JOHN W. WEST, 676**
RONALD J. EIDSON, 3239

RECEIVED

DEC 19 1986

OCD
HOBBS OFFICE