

MEXICO OIL CONSERVATION COMMISS
WELL LOCATION AND ACREAGE DEDICATION PLAT

Form C-102
 Supersedes C-128
 Effective 1-1-65

All distances must be from the outer boundaries of the Section

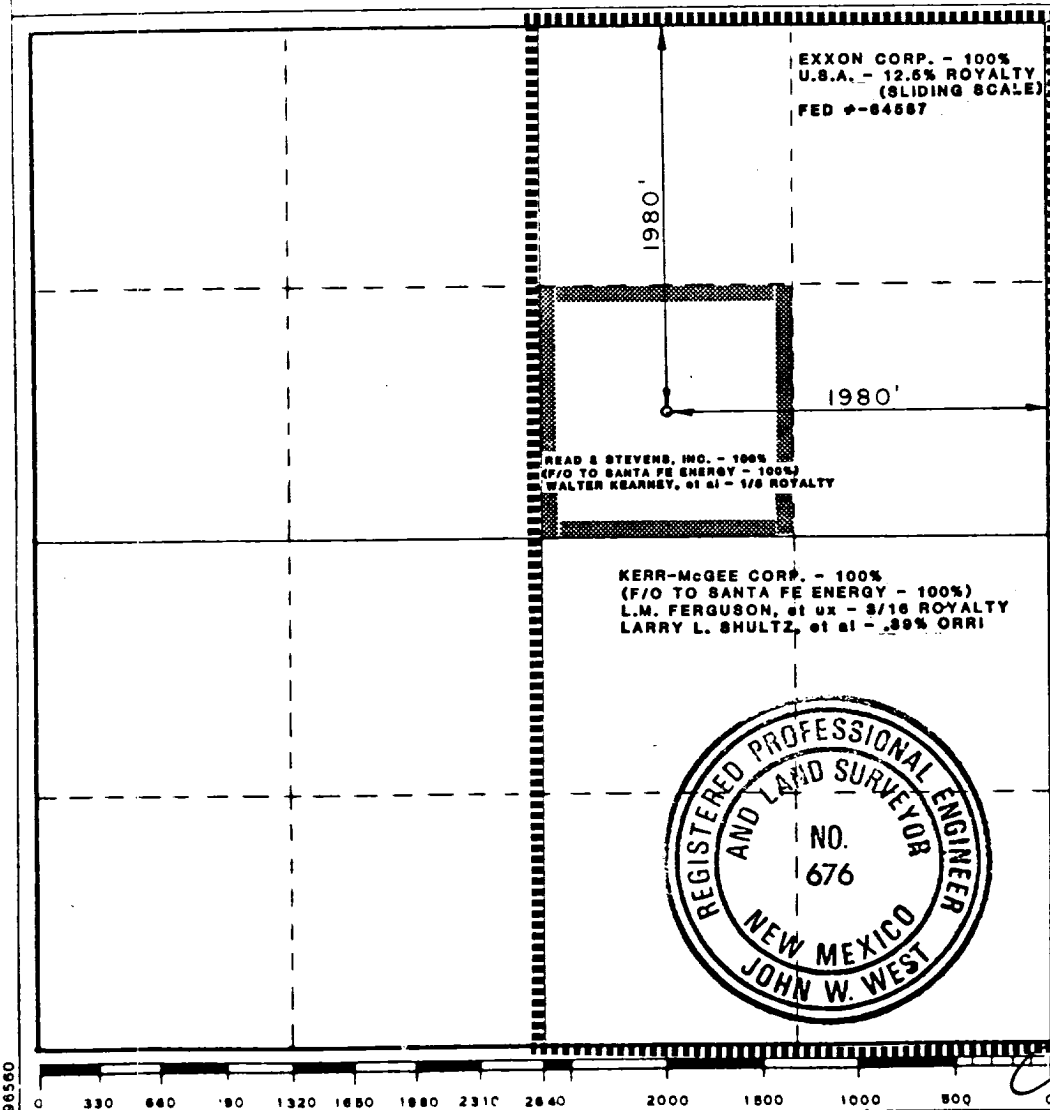
Operator Santa Fe Energy Operating Partners L.P.			Lease Hargis		Well No. #1
Section Letter C	Section 24	Township 22 South	Range 27 East	County Eddy	
Actual Footage Location of Well: 1980 feet from the North line and 1980 feet from the East line					
Ground Lve. Elev. 3054.7	Producing Formation Morrow	Pool Undes. Otis Morrow		Dedicated Acreage: 320 Acres	

1. Outline the acreage dedicated to the subject well by colored pencil or hatchure marks on the plat below.
2. If more than one lease is dedicated to the well, outline each and identify the ownership thereof (both as to working interest and royalty).
3. If more than one lease of different ownership is dedicated to the well, have the interests of all owners been consolidated by communitization, unitization, force-pooling, etc?

☒ Yes ☐ No If answer is "yes," type of consolidation Communitization Agreement

If answer is "no," list the owners and tract descriptions which have actually been consolidated. (Use reverse side of this form if necessary.) _____

No allowable will be assigned to the well until all interests have been consolidated (by communitization, unitization, forced-pooling, or otherwise) or until a non-standard unit, eliminating such interests, has been approved by the Commission.



CERTIFICATION

I hereby certify that the information contained herein is true and complete to the best of my knowledge and belief.

Name Michael R. Burton

Position Sr. Drilling Engineer

Company Santa Fe Energy Operating Partners, L.P.

Date 11-25-86

I hereby certify that the well location shown on this plat was plotted from field notes of actual surveys made by me or under my supervision, and that the same is true and correct to the best of my knowledge and belief.

Date Surveyed November 19, 1986

Registered Professional Engineer and/or Land Surveyor

John W. West
 Certificate No. JOHN W. WEST, 676
RONALD J. EIDSON, 3239