

NEW MEXICO OIL CONSERVATION COMMISSION  
WELL LOCATION AND ACREAGE DEDICATION PLAT

Form C-102  
Supersedes C-128  
Effective 1-1-65

MAR 30 '90

All distances must be from the outer boundaries of the Section.

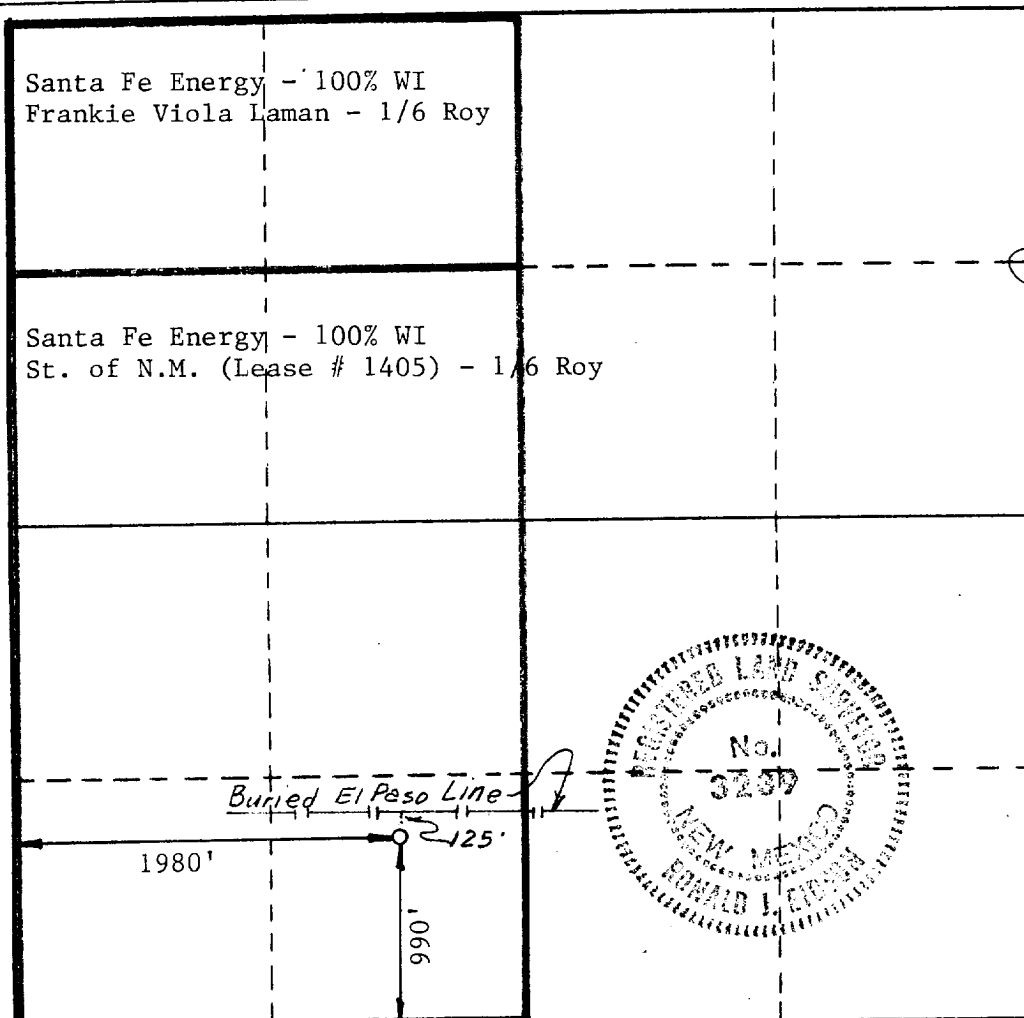
Operator Santa Fe Energy Operating Partners, L.P.			Lease Chase 2 State		A. C. D. OFFICE		Well No. 1
Unit Letter N	Section 2	Township 22 South	Range 27 East	County Eddy			
Actual Footage Location of Well: 990 feet from the South line and 1980 feet from the West line							
Ground Level Elev. 3105.4	Producing Formation Wolfcamp		Pool East Carlsbad Wolfcamp gas			Dedicated Acreage: 320 Acres	

1. Outline the acreage dedicated to the subject well by colored pencil or hatchure marks on the plat below.
2. If more than one lease is dedicated to the well, outline each and identify the ownership thereof (both as to working interest and royalty).
3. If more than one lease of different ownership is dedicated to the well, have the interests of all owners been consolidated by communitization, unitization, force-pooling, etc?

☒ Yes ☐ No If answer is "yes," type of consolidation Communitization

If answer is "no," list the owners and tract descriptions which have actually been consolidated. (Use reverse side of this form if necessary.)

No allowable will be assigned to the well until all interests have been consolidated (by communitization, unitization, forced-pooling, or otherwise) or until a non-standard unit, eliminating such interests, has been approved by the Commission.



CERTIFICATION

I hereby certify that the information contained herein is true and complete to the best of my knowledge and belief.

Name Sury McCullough  
Position Sr. Production Clerk  
Company Santa Fe Energy Operating Partners, L.P.  
Date March 29, 1990

I hereby certify that the well location shown on this plat was plotted from field notes of actual surveys made by me or under my supervision, and that the same is true and correct to the best of my knowledge and belief.

Date Surveyed  
November 3 & 4, 1986

Registered Professional Engineer  
and/or Land Surveyor

Ronald J. Eidson  
Certificate No. JOHN W. WEST, 676  
RONALD J. EIDSON, 3239