

NEW MEXICO OIL CONSERVATION COMMISSION
WELL LOCATION AND ACREAGE DEDICATION PLAT

Form C-102
Supersedes C-128
Effective 1-1-65

All distances must be from the outer boundaries of the Section.

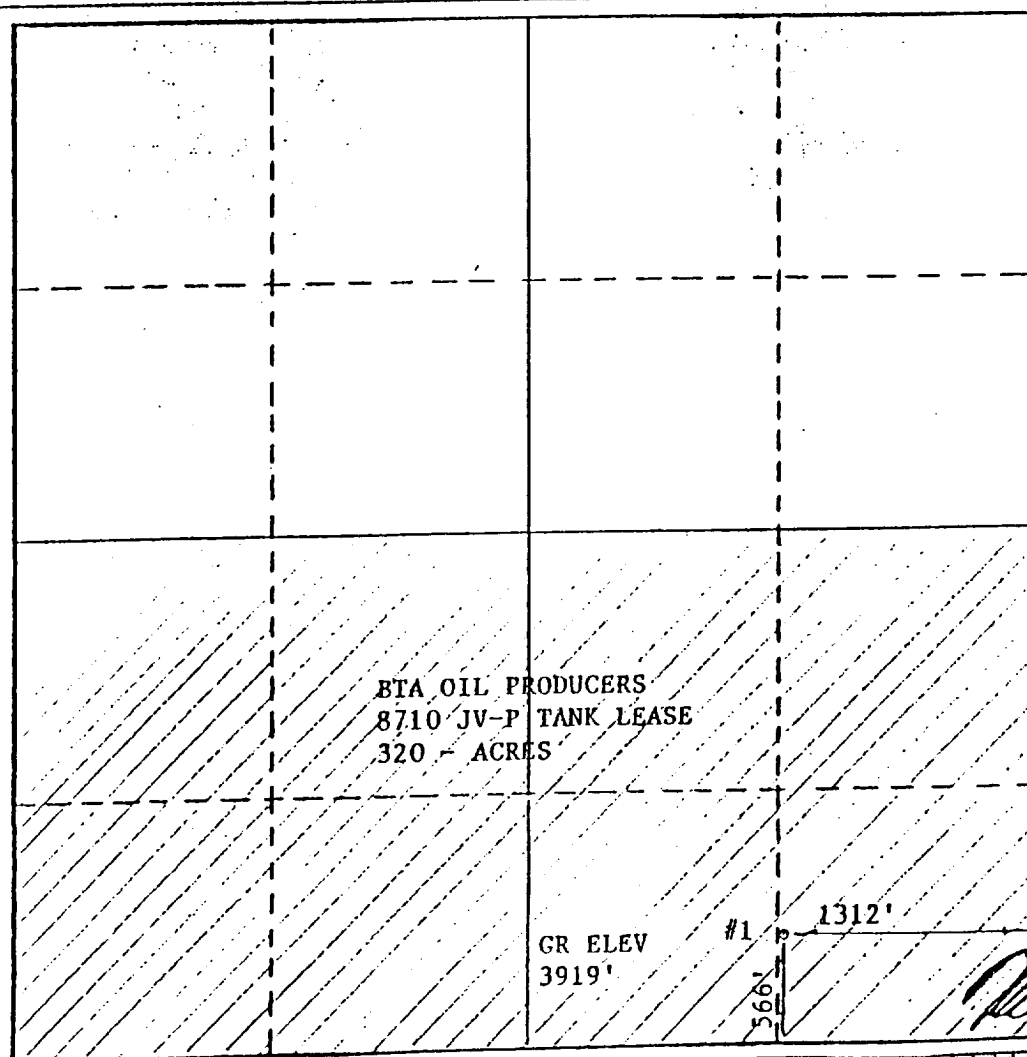
Operator BTA OIL PRODUCERS		Lease 8710 JV-P TANK		Well No. 1
Unit Letter "P"	Section 33	Township 23-S	Range 24-E	County EDDY COUNTY, NEW MEXICO
Actual Footage Location of Well:				
566	feet from the SOUTH	line and	1312	feet from the EAST line
Ground Level Elev. 3919	Producing Formation CROOKED CREEK	Pool JOJO CROOKED CREEK MORROW	Dedicated Acreage: 320 ACRES Acres	

1. Outline the acreage dedicated to the subject well by colored pencil or hatchure marks on the plat below.
2. If more than one lease is dedicated to the well, outline each and identify the ownership thereof (both as to working interest and royalty).
3. If more than one lease of different ownership is dedicated to the well, have the interests of all owners been consolidated by communitization, unitization, force-pooling, etc?

☐ Yes ☐ No If answer is "yes," type of consolidation _____

If answer is "no," list the owners and tract descriptions which have actually been consolidated. (Use reverse side of this form if necessary.) _____

No allowable will be assigned to the well until all interests have been consolidated (by communitization, unitization, forced-pooling, or otherwise) or until a non-standard unit, eliminating such interests, has been approved by the Commission.



CERTIFICATION

I hereby certify that the information contained herein is true and complete to the best of my knowledge and belief.

Name

DOROTHY HOUGHTON

Position

Regulatory Supervisor

Company

BTA OIL PRODUCERS

Date

October 6, 1987

I hereby certify that the well location shown on this plat was plotted from field notes of actual surveys made by me or under my supervision, and that the same is true and correct to the best of my knowledge and belief.

Date Surveyed

SEPTEMBER 16, 1987

Registered Professional Engineer
and/or Land Surveyor

MAX A. SCHUMANN JR

Certificate No.

1510